

INDUSTRIAL PROPERTY FOR SALE



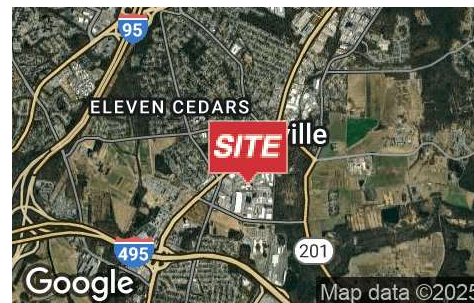
10710 TUCKER ST Beltsville, MD 20705

LOCATION DESCRIPTION

Conveniently located just off of Route 1 (Baltimore Avenue) in Beltsville. Within close proximity to the Capital Beltway (I-495) and I-95.

PROPERTY DESCRIPTION

- Approx. 26,586 sf total space
- Approx. 8,000 sf of office space
- Approx. 18,586 sf of warehouse/production space
- Heavy electric
- New Roof 2022
- 15-16' clear ceiling height- Fully sprinklered
- Zoned I-H (Heavy Industrial)
- (3) recessed loading docks
- **SALE PRICE: \$4,450,000**



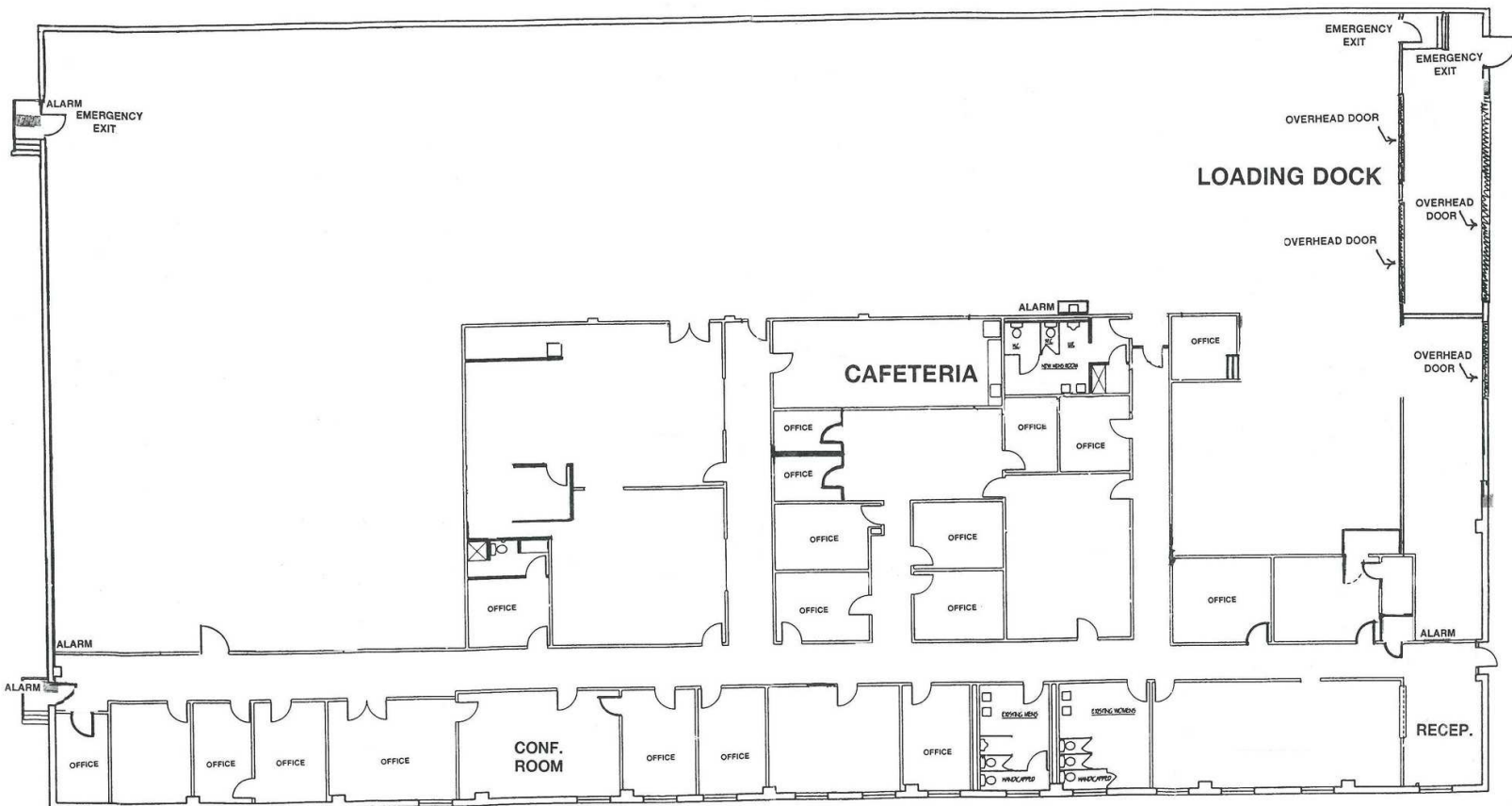
ANDY MAYR, CCIM
O: 301.918.2919
amayr@naimichael.com



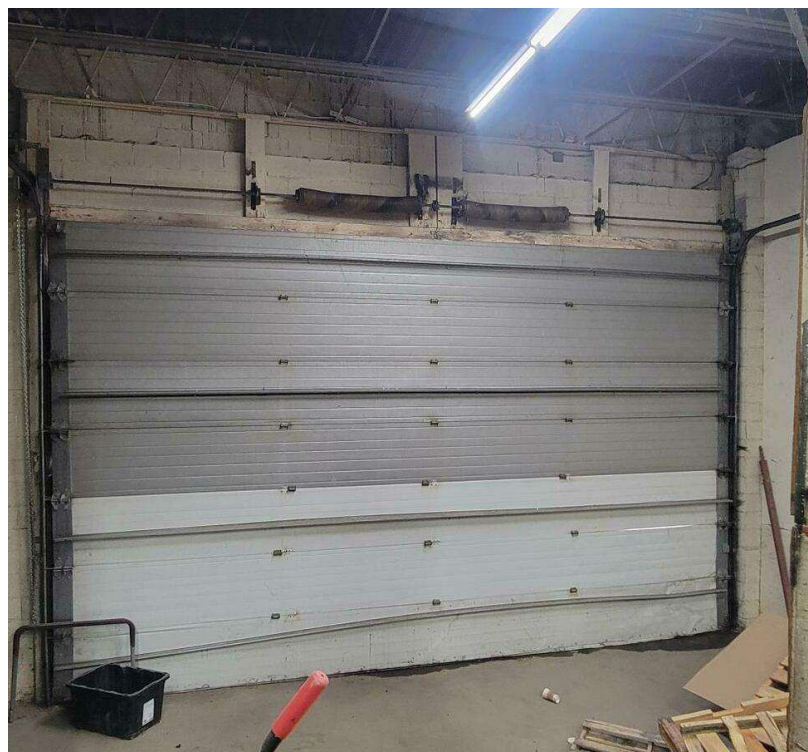
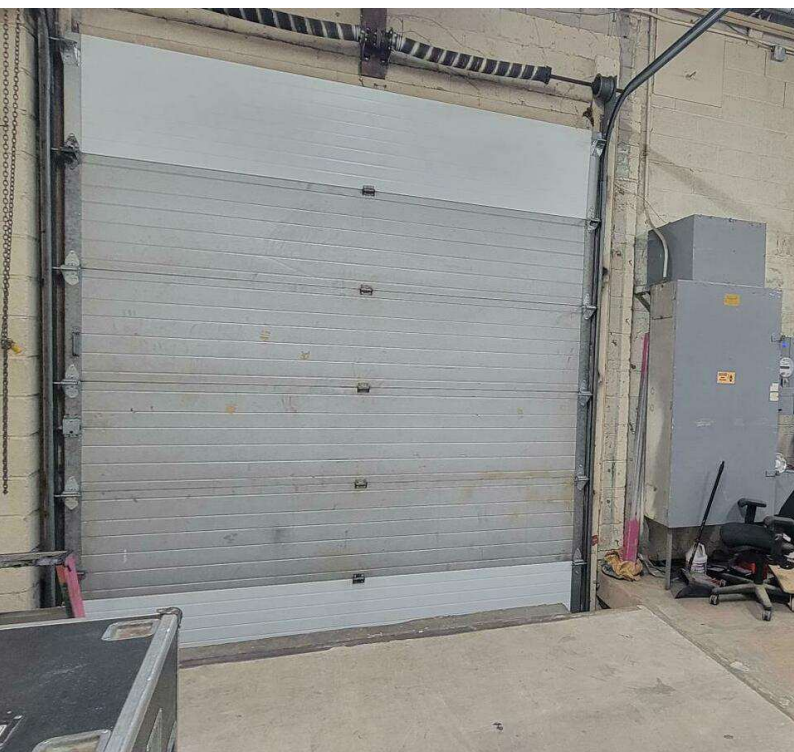
10100 Business Pkwy | Lanham, MD 20706 | +1 301.459.4400 | naimichael.com

The information contained herein has been given to us by the owner of the property or other sources we deem reliable. We have no reason to doubt its accuracy, but we do not guarantee it. Floor plans, site plans and other graphic representations of this property have been reduced and reproduced, and are not necessarily to scale. All information should be verified prior to purchase or lease.

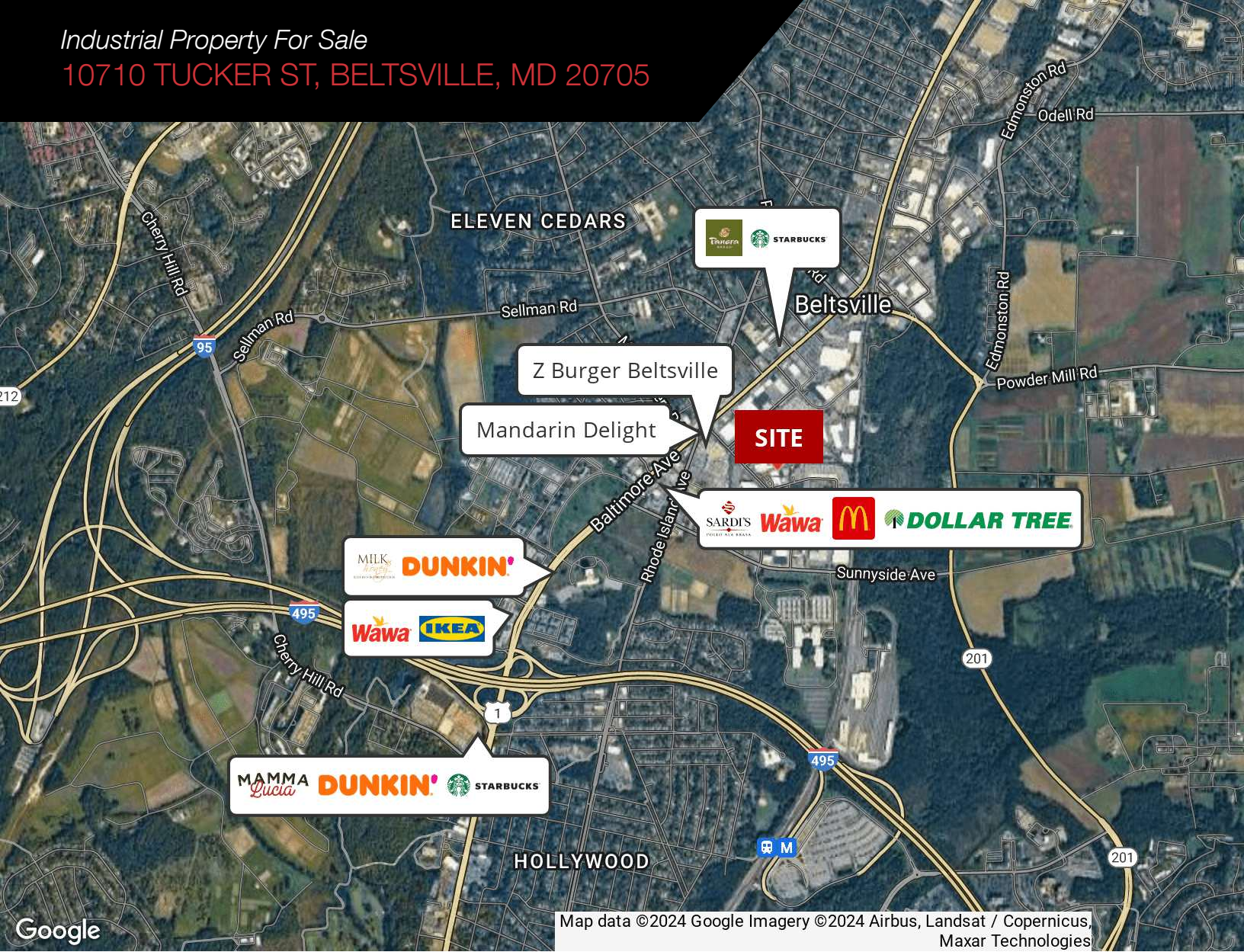
Industrial Property For Sale
10710 TUCKER ST, BELTSVILLE, MD 20705






Industrial Property For Sale
10710 TUCKER ST, BELTSVILLE, MD 20705



Industrial Property For Sale
10710 TUCKER ST, BELTSVILLE, MD 20705



DEMOGRAPHICS

			
	POPULATION	HOUSEHOLDS	AVG. HOUSEHOLD INCOME
1 Mile	6,543	2,356	\$125,248
3 Miles	85,595	30,468	\$115,110
5 Miles	308,645	101,741	\$115,569

Demographics data derived from AlphaMap

