



**3047 UNIVERSITY
AVENUE, SAN DIEGO**
NORTH PARK ICON

Located in vibrant North Park, San Diego, this unique and newly renovated property offers creative office and retail space solutions. Surrounded by trendy eateries, craft breweries, and a thriving arts scene, North Park attracts professionals and creatives alike. With over 40,000 residents and a walkable, dynamic community, it's the perfect spot to work and explore.



NORTH PARK OFFICE SPACE FOR LEASE

PROPERTY HIGHLIGHTS

Various office spaces available!

- Secure building
- Flexible floorplans
- Suites offer tenants the ability to take advantage of the unique character of the building, a great location and creative build out opportunities.
- Parking available (paid lot) & street parking also available

LOCATION

Great location just a block off 30th Street and University Avenue

- In the heart of North Park Business District
- Easy Access to I-805 and Hwy-163
- Close proximity to MTS Transit



CONTACT US NOW

QFC - License # 01881505

PETER WRIGHT
619.243.8450
pwright@qfcre.com
DRE #01846272

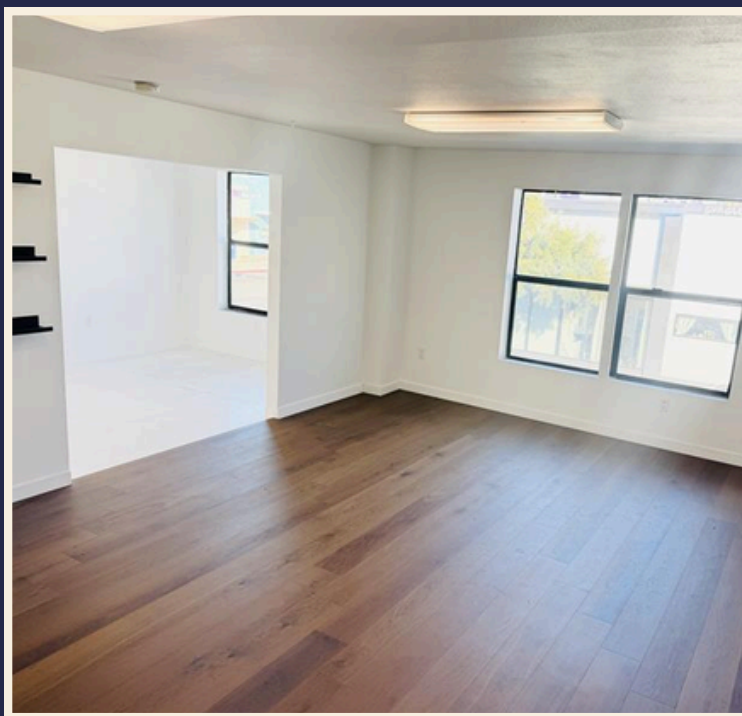
EMMETT CAHILL
619.243.8450
ecahill@qfcre.com
DRE #02033604

1495 Pacific Hwy, Ste 450 San Diego, CA 92101 | www.QFCRE.com

USE: Office
AVAILABLE: NOW
RATE: \$2.65/SF

PROPERTY HIGHLIGHTS

- Lots of Natural Light
- Beautiful Floorplan
- Hardwood Floors
- Ideal for art studio or creative office



CONTACT US NOW

QFC - License # 01881505

PETER WRIGHT

619.243.8450

pwright@qfcre.com

DRE #01846272

EMMETT CAHILL

619.243.8450

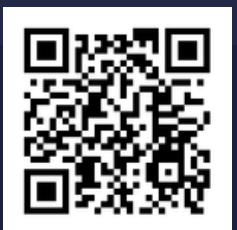
ecahill@qfcre.com

DRE #02033604

USE: Office
AVAILABLE: 12/1
RATE: \$2.65/SF

PROPERTY
HIGHLIGHTS

- Ideal for art studio or creative office
- Great natural light with operable windows
- Wood flooring, ceiling fans



CONTACT US NOW

QFC - License # 01881505

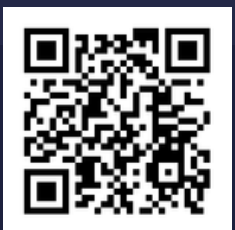
PETER WRIGHT
619.243.8450
pwright@qfcre.com
DRE #01846272

EMMETT CAHILL
619.243.8450
ecahill@qfcre.com
DRE #02033604

USE: Office
AVAILABLE: NOW
RATE: \$2.65/SF

PROPERTY
HIGHLIGHTS

- Ideal for art studio or creative office
- Great natural light
- Kitchen, private bathroom



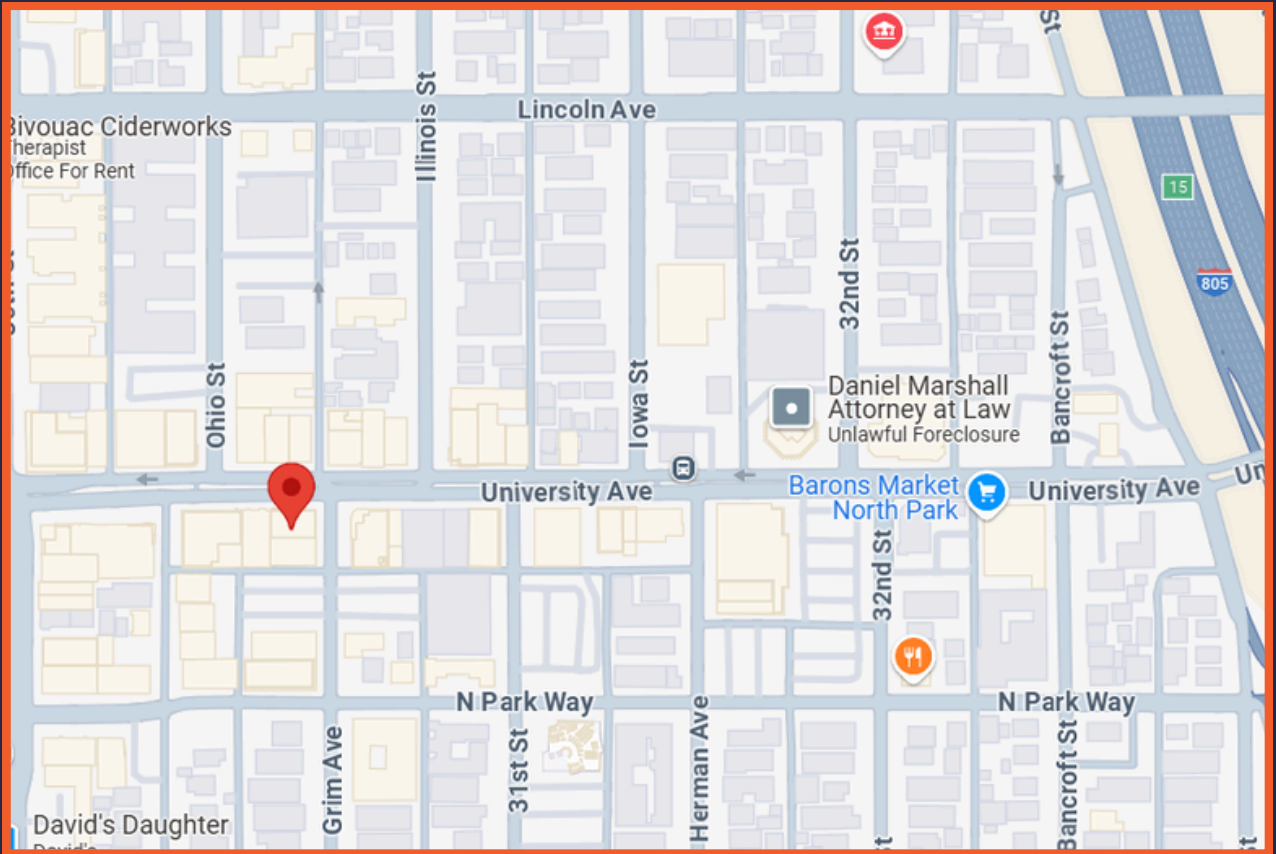
CONTACT US NOW

QFC - License # 01881505

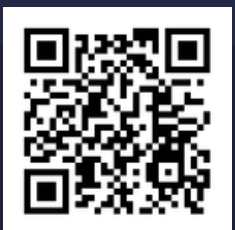
PETER WRIGHT
619.243.8450
pwright@qfcre.com
DRE #01846272

EMMETT CAHILL
619.243.84570
ecahill@qfcre.com
DRE #02033604

1495 Pacific Hwy, Ste 450 San Diego, CA 92101 | www.QFCRE.com



North Park is located in the city's center and is one of San Diego's thriving neighborhoods. The craft brewery, tasting, room, and cocktail lounge scene is unmatched. There is flourishing boutique shopping, arts, apparel, farmers market and more.



CONTACT US NOW

QFC - License # 01881505

PETER WRIGHT

619.243.8450

pwright@qfcre.com

DRE #01846272

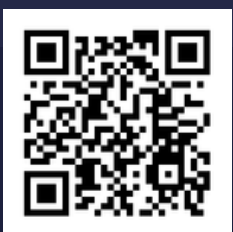
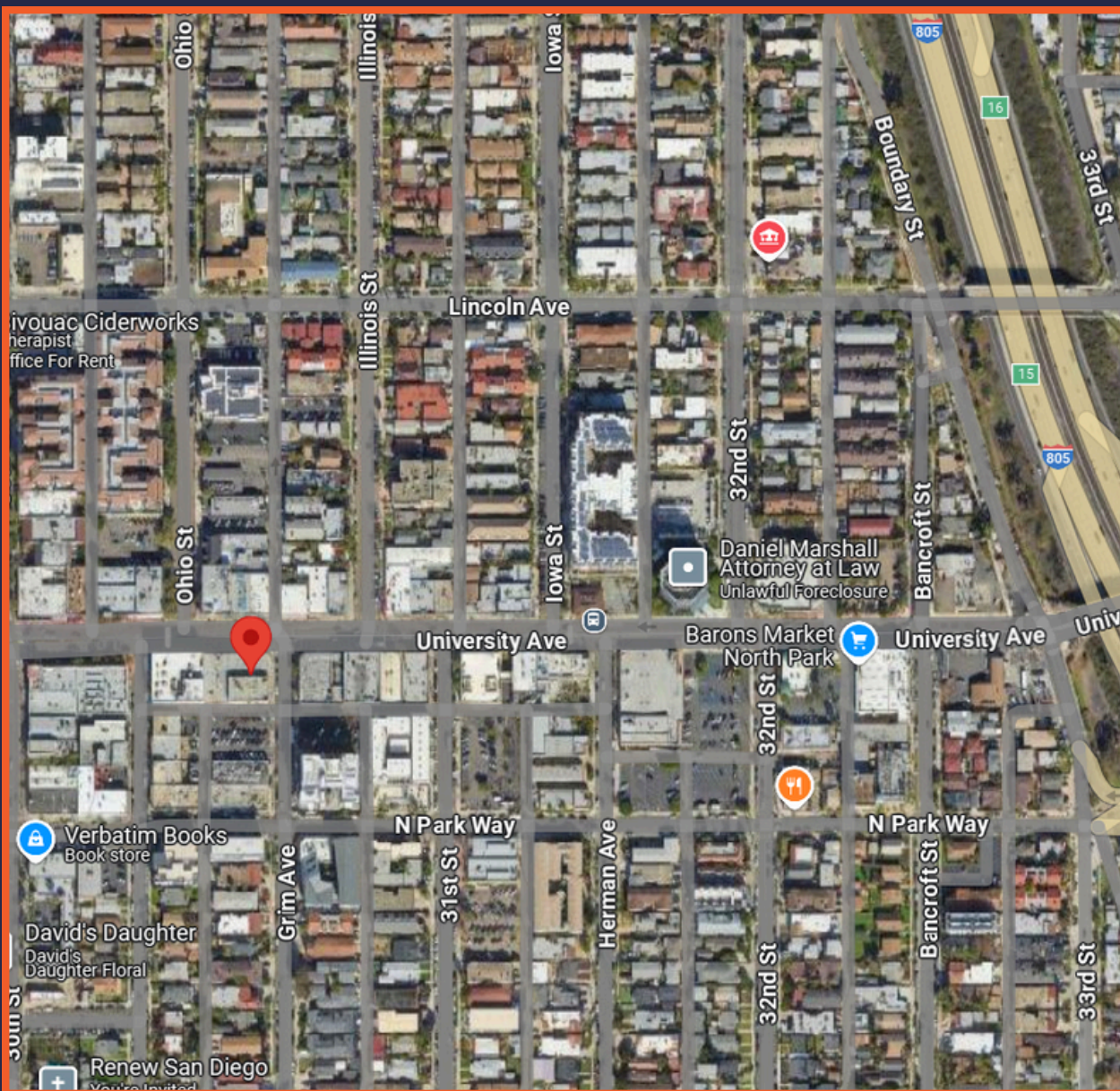
EMMETT CAHILL

619.243.8450

ecahill@qfcre.com

DRE #02033604

1495 Pacific Hwy, Ste 450 San Diego, CA 92101 | www.QFCRE.com



CONTACT US NOW

QFC - License # 01881505

PETER WRIGHT

619.243.8450

pwright@qfcre.com

DRE #01846272

EMMETT CAHILL

619.243.8450

ecahill@qfcre.com

DRE #02033604

1495 Pacific Hwy, Ste 450 San Diego, CA 92101 | www.QFCRE.com