

Industrial | For Sale

CBRE

1112 S Sirrine St

Mesa, AZ 85210

±10,800 SF Office/Warehouse on ±0.5 acres



1112 S Sirrine St
Mesa, AZ 85210

For Sale

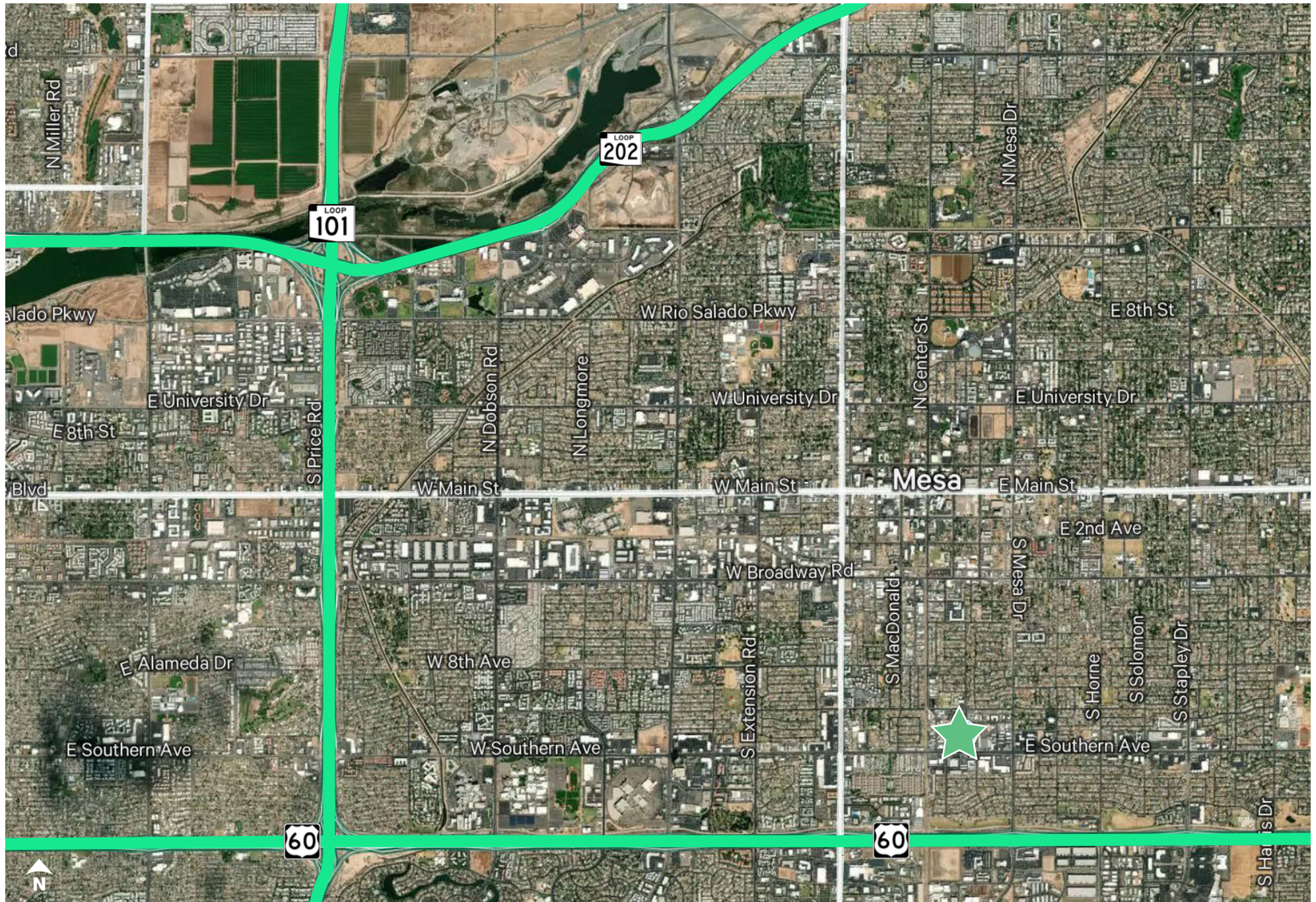


Property Features

- + Total Building: ±10,800 SF total building
- + Situated on ±0.50 acres (±20,800 SF land)
- + ± 3,045 SF office has 6 private offices and a large bullpen area
- + ±800 Amps 120/208 volt SES
- + ±15' clear height in warehouse
- + Three (3)-10'x10' grade level loading doors
- + One (1) truckwell
- + Built in 1978 and renovated in 2024
- + Fenced, secure yard with two (2) gates
- + Zoning is Light Industrial, City of Mesa
- + Evaporative cooled warehouse
- + Parcel Number: 139-32-044B
- + Taxes (2025): \$6,277.10
- + Sale Price: \$2,500,000 (\$231.48/SF)

Aerial

For Sale



1112 S Sirrine St
Mesa, AZ 85210

For Sale

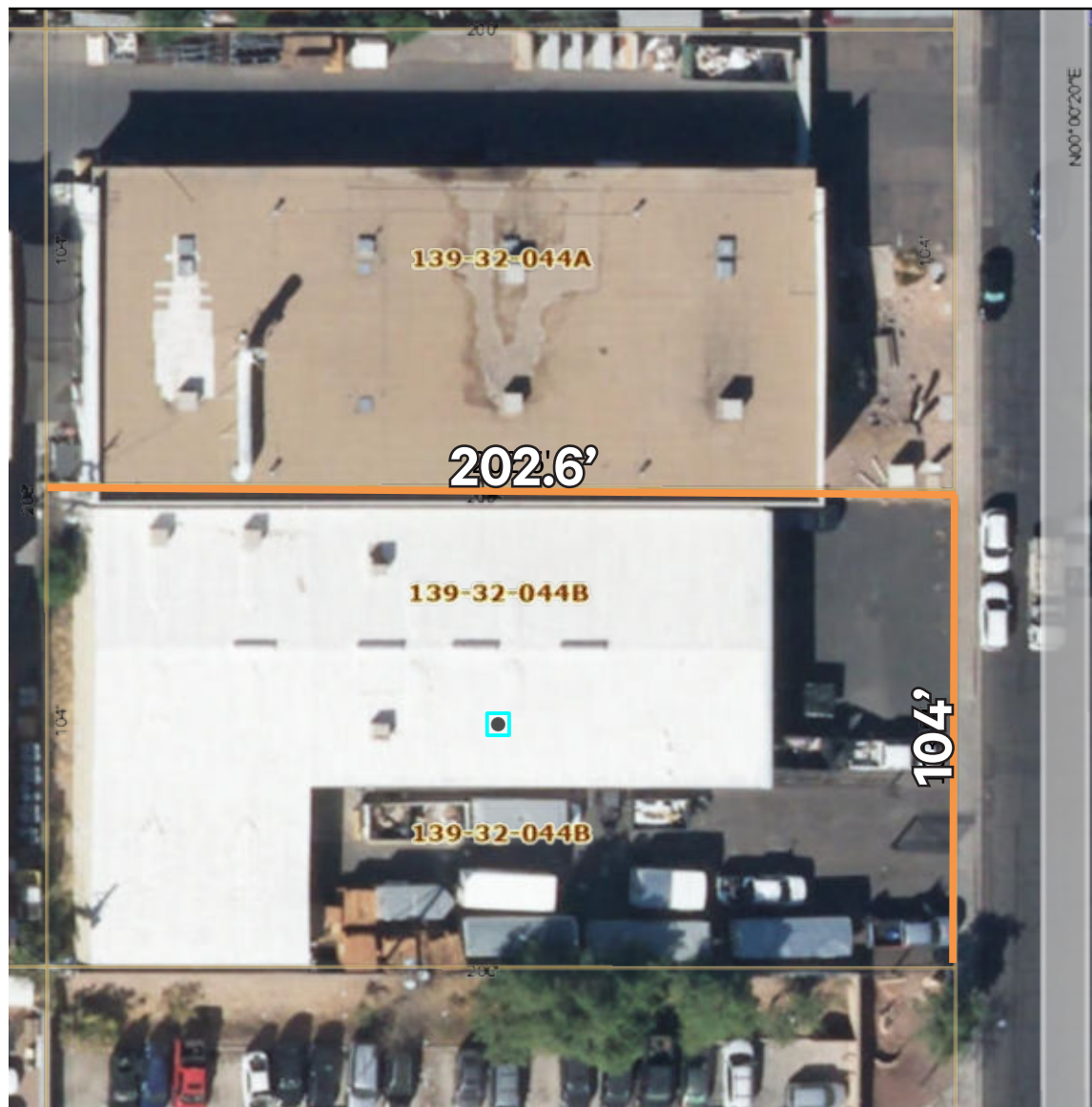
OFFICE



CONFERENCE ROOM



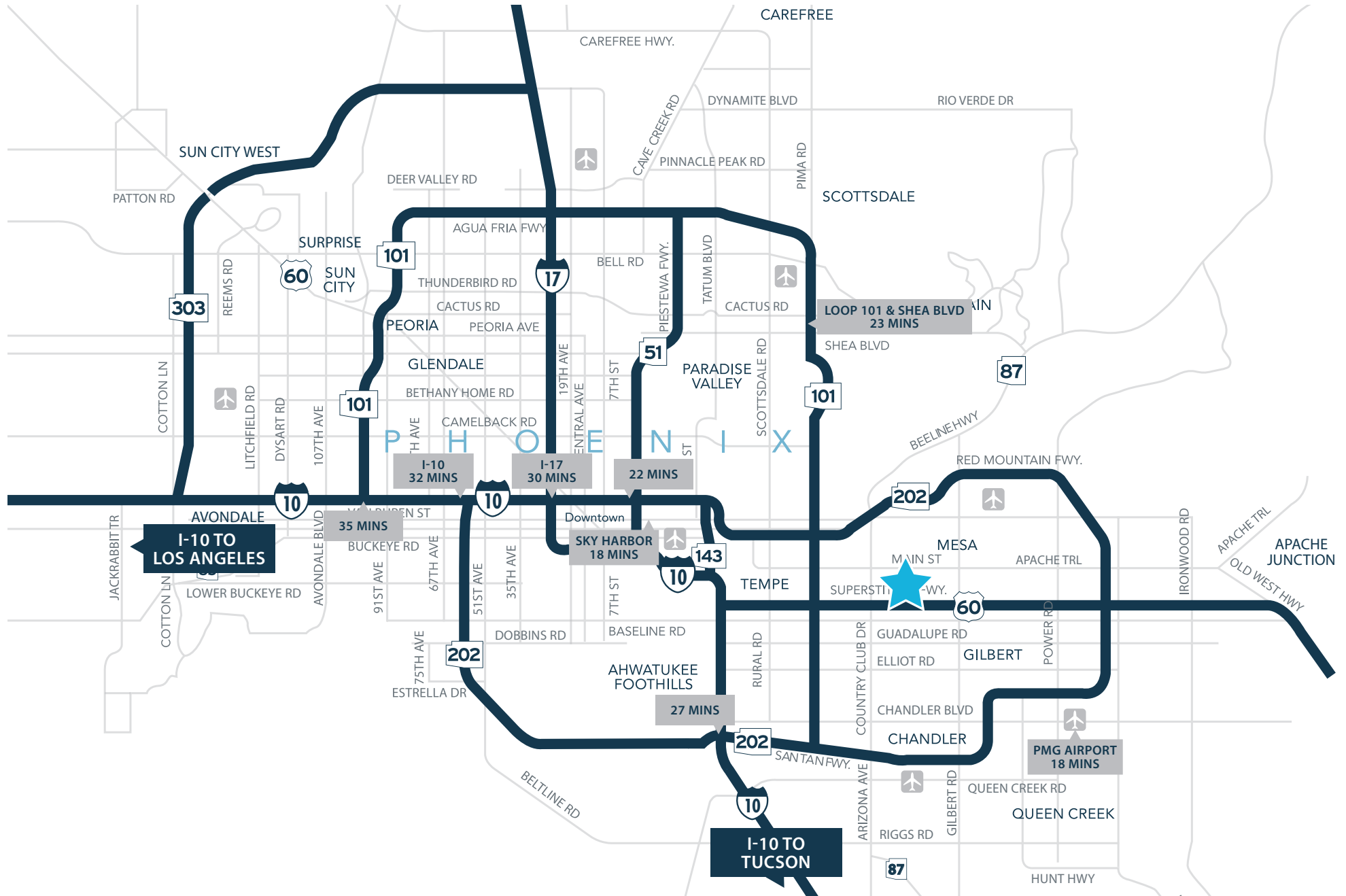
WAREHOUSE



Map

For Sale

Drive Times from Property



1112 S Sirrine St
Mesa, AZ 85210

For Sale



Contact Us

Mike Parker

Executive Vice President

602 614 7877

mike.parker6@cbre.com

© 2025 CBRE, Inc. All rights reserved. This information has been obtained from sources believed reliable, but has not been verified for accuracy or completeness. You should conduct a careful, independent investigation of the property and verify all information. Any reliance on this information is solely at your own risk. CBRE and the CBRE logo are service marks of CBRE, Inc. All other marks displayed on this document are the property of their respective owners, and the use of such logos does not imply any affiliation with or endorsement of CBRE. Photos herein are the property of their respective owners. Use of these images without the express written consent of the owner is prohibited.

www.cbre.com

CBRE