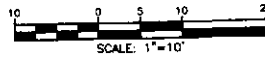
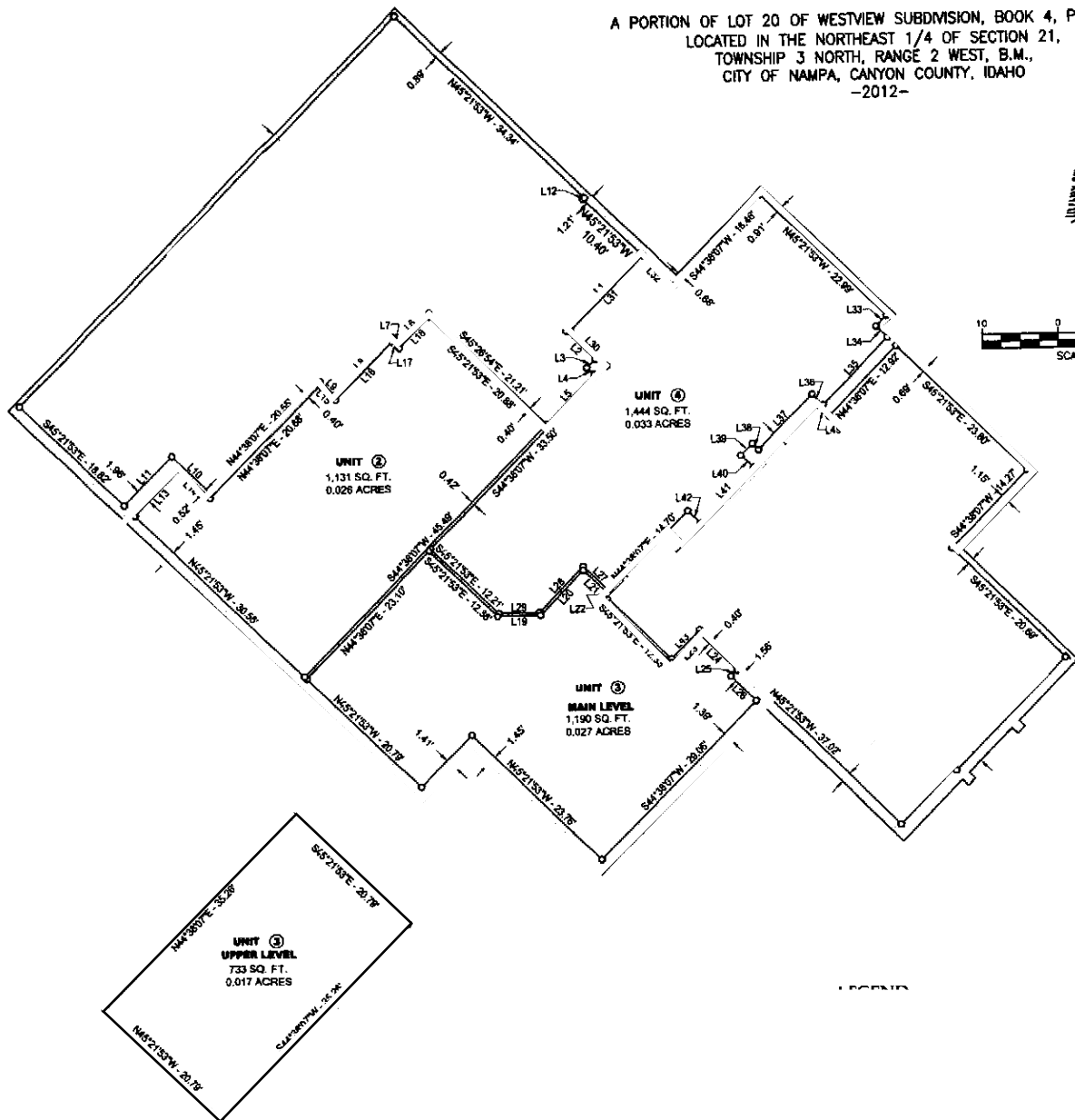


MCCLURE'S BUSINESS PARK CONDOMINIUMS

A PORTION OF LOT 20 OF WESTVIEW SUBDIVISION, BOOK 4, PAGE 31,
 LOCATED IN THE NORTHEAST 1/4 OF SECTION 21,
 TOWNSHIP 3 NORTH, RANGE 2 WEST, B.M.,
 CITY OF NAMPA, CANYON COUNTY, IDAHO
 -2012-



Parcel Line Table		
Line #	Length	Direction
L1	14.17	N44°38'07"E
L2	5.28	N45°21'53"W
L3	1.82	N44°38'07"E
L4	1.32	N45°21'53"W
L5	9.07	N44°38'07"E
L6	5.71	N44°38'07"E
L7	1.38	S45°21'53"E
L8	10.59	N44°38'07"E
L9	2.80	S45°21'53"E
L10	7.11	S45°21'53"E
L11	9.01	N44°38'07"E
L12	0.32	N44°38'07"E
L13	8.49	N44°38'07"E
L14	5.55	S45°21'53"E
L15	2.80	S45°21'53"E
L16	10.82	N44°38'07"E
L17	1.32	S45°21'53"E
L18	5.70	N44°38'07"E
L19	5.87	N89°38'07"E
L20	8.17	N44°38'07"E
L21	4.40	S45°21'53"E
L22	0.79	S44°38'07"W
L23	5.20	N44°38'07"E
L24	6.78	S45°21'53"E
L25	1.16	S44°38'07"W
L26	4.84	S45°21'53"E

Parcel Line Table		
Line #	Length	Direction
L27	4.90	S45°21'53"E
L28	8.41	N44°38'07"E
L29	5.35	N89°38'07"E
L30	6.58	S45°21'53"E
L31	13.75	S44°38'07"W
L32	5.58	N45°18'01"W
L33	2.01	N44°38'07"E
L34	2.06	N45°21'53"W
L35	12.42	N44°38'07"E
L36	2.07	S45°21'53"E
L37	10.10	N44°38'07"E
L38	1.17	S45°21'53"E
L39	2.16	N44°38'07"E
L40	2.33	N45°21'53"W
L41	10.13	N44°38'07"E
L42	2.33	S45°21'53"E
L43	5.19	S44°38'07"W
L44	11.50	N45°21'53"W
L45	3.40	N44°38'07"E
L46	5.44	S45°21'53"E
L47	1.77	N44°38'07"E
L48	3.11	N45°21'53"W
L49	2.08	S45°21'53"E
L50	0.37	N45°21'53"E
L51	10.15	S44°38'07"W

