



M E R I D I A N

147 S. CHERRY STREET, SUITE 200 | WINSTON-SALEM, NC 27101 | P 336.722.1986 | F 336.723.3173 | MERIDIANREALTY.COM

Medical | Office Condo

154 Dornach Way

Bermuda Run, NC 27006



3,059± SF of professional office or medical space available in Kinderton Business Park across from Bermuda Run. Efficient layout with private perimeter offices and corner conference room. Enjoy the beautiful setting in western Forsyth County with the Yadkin River, walking trails, Kinderton, Winmock, Tangelwood Park, and Bermuda Run.

For more information:

William T. Bartholomew, Jr., CCIM

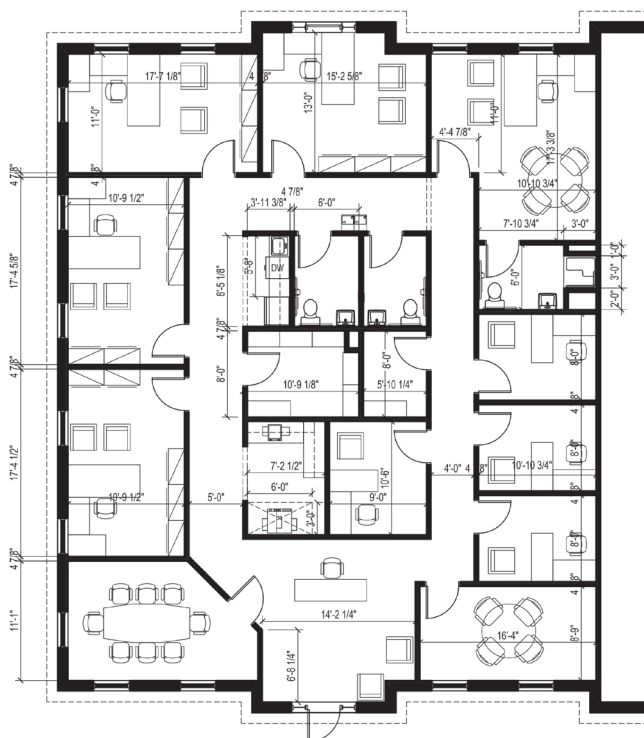
william@meridianrealty.com

336.480.2335

FOR LEASE: \$18.00 PSF
FOR SALE: \$575,000.00

WWW.MERIDIANREALTY.COM

154 Dornach Way | Bermuda Run, NC 27006



No warranty or representation (express or implied) is made as to the accuracy or completeness of the information set forth herein. All information is submitted subject to errors, omissions, change of price, prior lease or sale, and withdrawal without notice. All marketing material produced by the Meridian Realty Group is proprietary. Any reproduction is expressly prohibited.



THE MERIDIAN REALTY GROUP | 147 S. CHERRY STREET, SUITE 200 | WINSTON-SALEM, NC 27101

P 336.722.1986 | F 336.723.3173

WWW.MERIDIANREALTY.COM