

R&D/OFFICE  
SPACE  
FOR LEASE  
± 15,244 SF

# 1500 BUCKEYE DRIVE

MILPITAS, CALIFORNIA



FOR MORE  
INFORMATION  
PLEASE CONTACT

**Scott J. Prosser, SIOR**

Senior Vice President  
Lic. 01104754  
408.453.7454  
scott.prosser@cbre.com

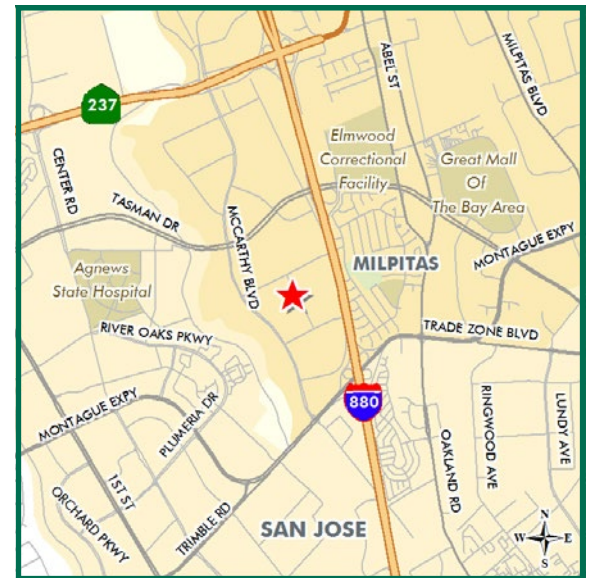
**Nick Whitstone**

First Vice President  
Lic. 01196787  
408.453.7438  
nick.whitstone@cbre.com

CBRE, Inc.  
Broker Lic. 00409987  
225 West Santa Clara Street  
10th Floor  
San Jose, CA 95113

## PROPERTY FEATURES

- 25% HVAC Office
- 50% Tiled Lab
- 25% Warehouse
- Grade Level Loading
- 800 Amps @ 480 Volt
- 3.5/1,000 Parking
- Available On A 30 Days Notice
- \$1.20 Gross



R&D/OFFICE  
SPACE  
FOR LEASE

# 1500 BUCKEYE DRIVE

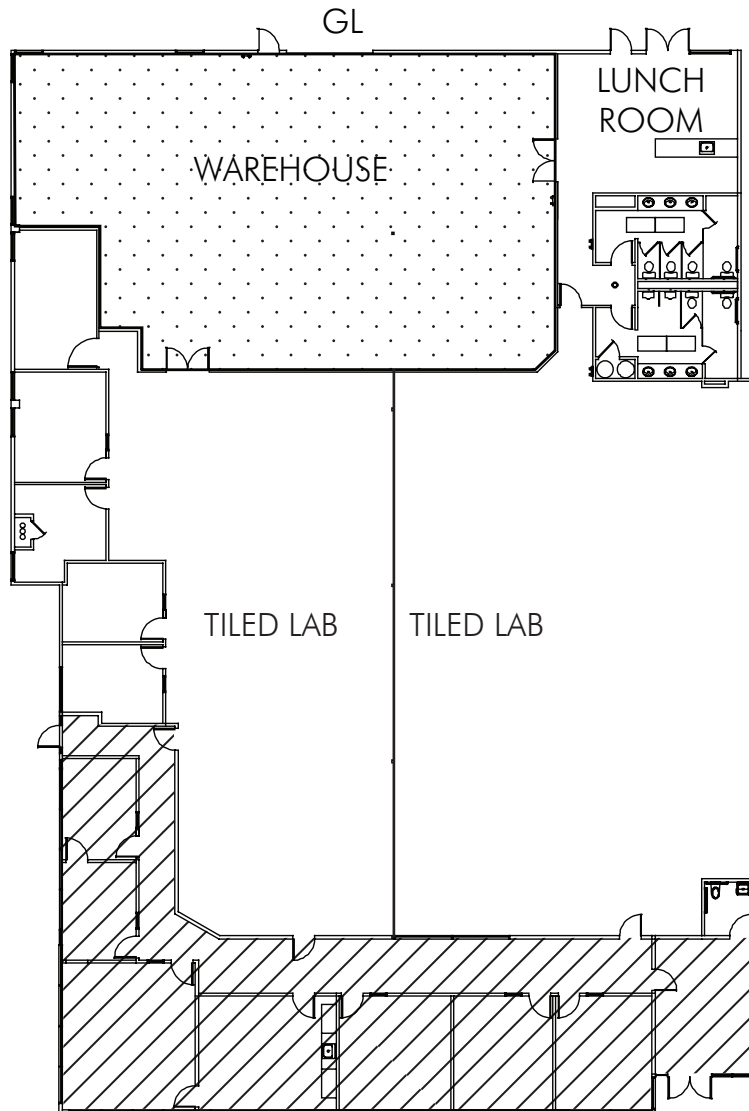
MILPITAS, CALIFORNIA



± 15,244  
SQUARE  
FEET

## FLOOR PLAN

Not to scale



FOR MORE  
INFORMATION  
PLEASE CONTACT




### Scott J. Prosser, SIOR

Senior Vice President  
Lic. 01104754  
408.453.7454  
scott.prosser@cbre.com

### Nick Whitstone

First Vice President  
Lic. 01196787  
408.453.7438  
nick.whitstone@cbre.com

CBRE, Inc.  
Broker Lic. 00409987  
225 West Santa Clara Street  
10th Floor  
San Jose, CA 95113

-  OFFICE
-  DROP CEILING TILE
-  OPEN CEILING WAREHOUSE