

For Lease

Colliers

Paramount Industrial Park

5,000 SF Industrial / Office Unit

7057 Marcelle Street, Paramount, CA 90723

Property Highlights

- Part of Larger 20,000 SF Free Standing Building
- Secured, Attractive Business Park Setting
- High Clearance, Excellent Truck Circulation
- Convenient Access to 710, 91, 105 Freeways

Building Features

- 50' x 100' Configuration
- 1,500 SF High Finish Offices w/ Polished Concrete Floors
- 20' Ceiling Height
- Shared Dock High Loading
- Upgraded UFO High Bay LED Warehouse Lighting
- Oversized 14' X 14' Ground Level Door
- 100 Amps, 240 Volts, 3 Phase, 4 Wire (please verify)



Paramount Industrial Park

CONTACT

Riley Heaton

Senior Associate

License No. 02002525

+1 323 278 3118

riley.heaton@colliers.com

Colliers International

2141 Rosecrans Avenue

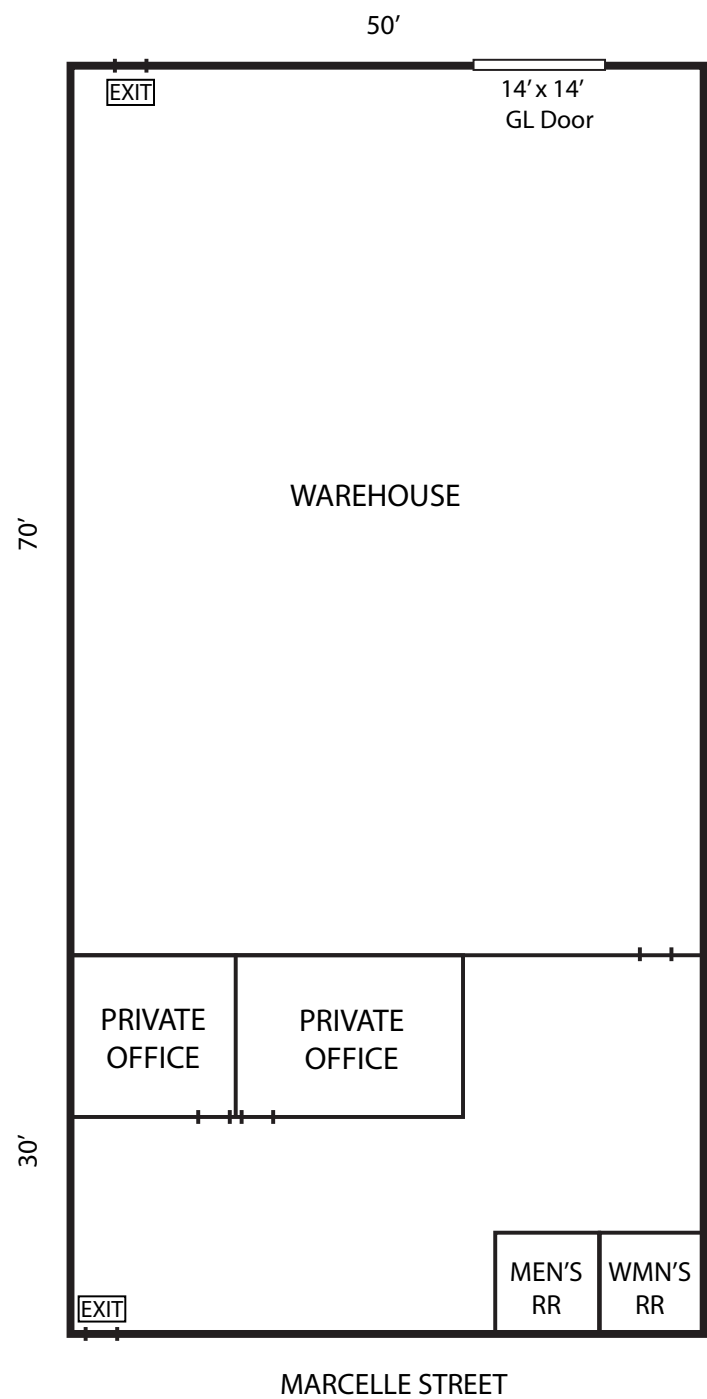
Suite 1120

El Segundo, CA 90245

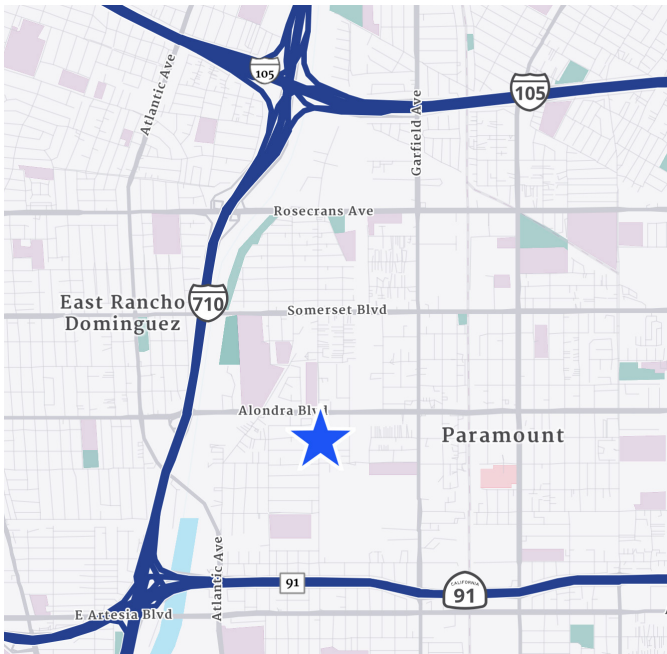
colliers.com

Paramount Industrial Park > 5,000 SF

Site Plan



Map



CONTACT

Riley Heaton
Senior Associate
License No. 02002525
+1 323 278 3118
riley.heaton@colliers.com

Colliers International
2141 Rosecrans Avenue
Suite 1120
El Segundo, CA 90245
colliers.com

This document/email has been prepared by Colliers for advertising and general information only. Colliers makes no guarantees, representations or warranties of any kind, expressed or implied, regarding the information including, but not limited to, warranties of content, accuracy and reliability. Any interested party should undertake their own inquiries as to the accuracy of the information. Colliers excludes unequivocally all inferred or implied terms, conditions and warranties arising out of this document and excludes all liability for loss and damages arising there from. This publication is the copyrighted property of Colliers and /or its licensor(s). © 2024. All rights reserved. This communication is not intended to cause or induce breach of an existing listing agreement. **Colliers International Greater Los Angeles, Inc.**