

1204 N Columbia Ave

5,429 SF Building For Sale

1204 N Columbia Ave
Rincon, GA 31326
www.cbre.com/savannah



Property Description

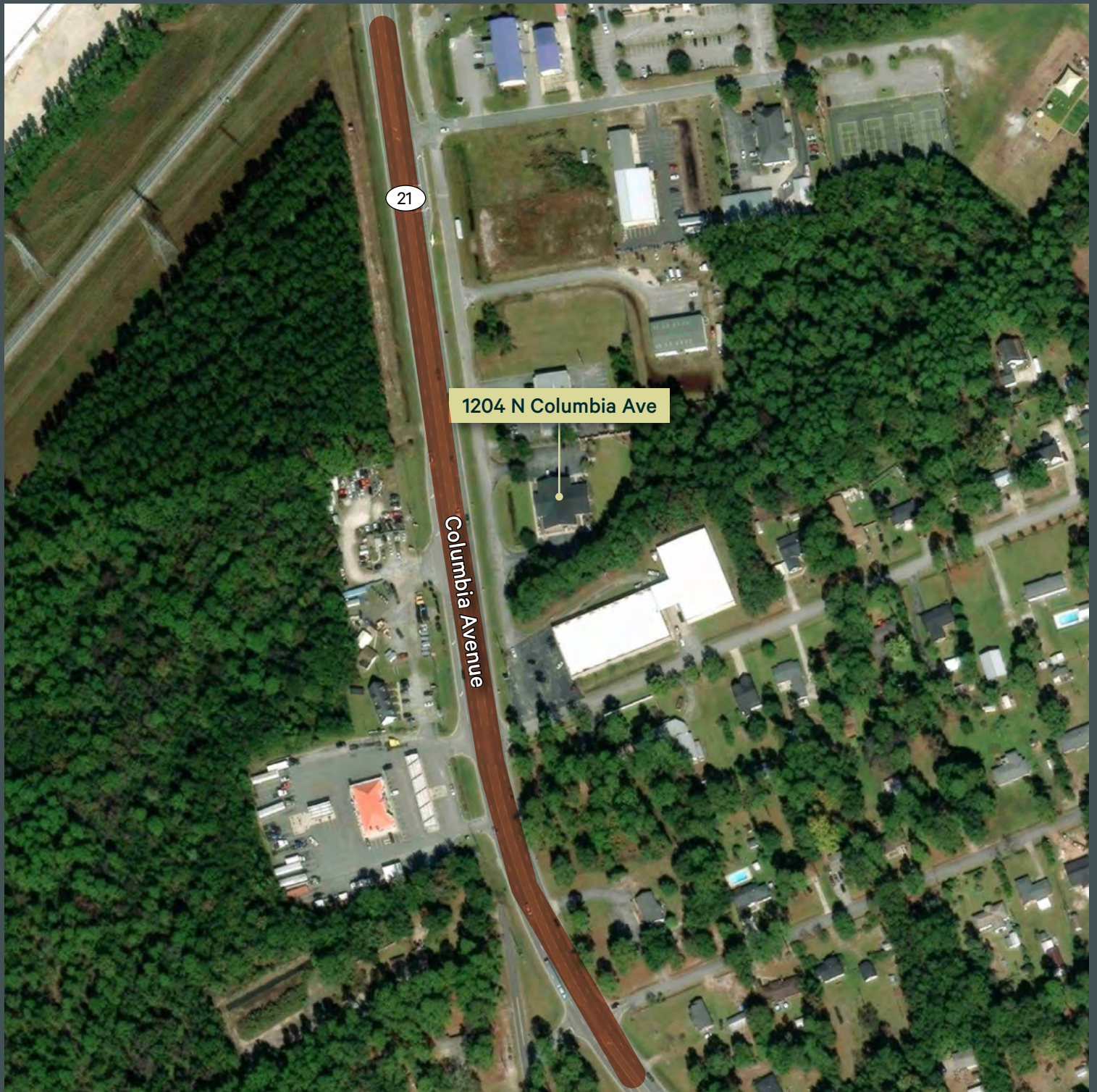
1204 N Columbia Ave located in Rincon, GA with approximately 5,429 SF of space. This opportunity is within close proximity to the Port of Savannah, Hyundai Megasite, Effingham County Courthouse, and more. Further location details on page 2.

Property Details

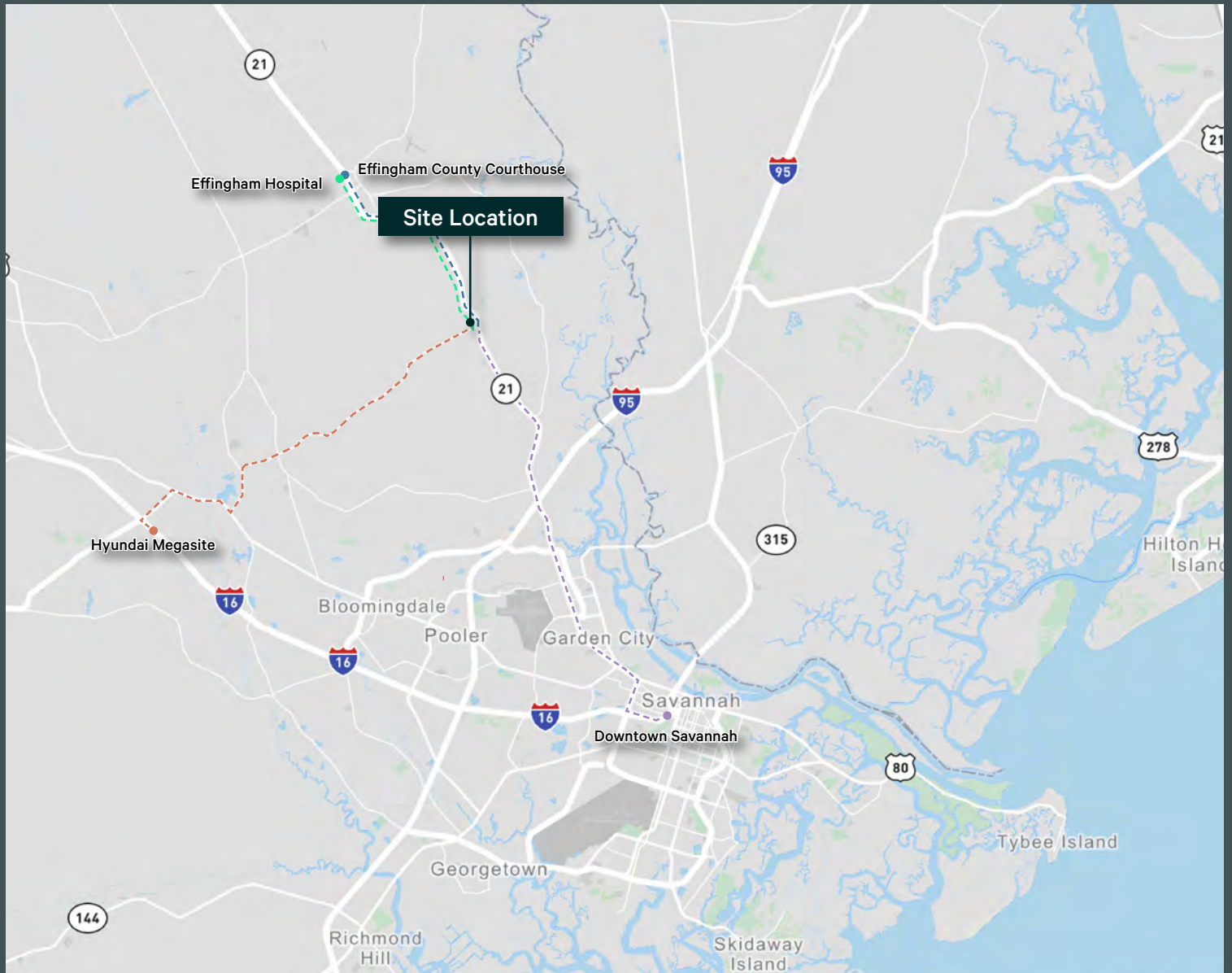
- + Building Size - 5,429 SF
- + 1.97 Acres (two contiguous parcels)
- + Asking Price - \$1,790,000
- + Renovated in 2016
- + Close Proximity to Port of Savannah, Hyundai Megasite, Effingham County Courthouse, and Downtown Savannah

Columbia Ave/Highway 21

Conveniently located off of Columbia Avenue/Highway 21, Effingham County's main road system, providing easy access and a prime, centralized location.



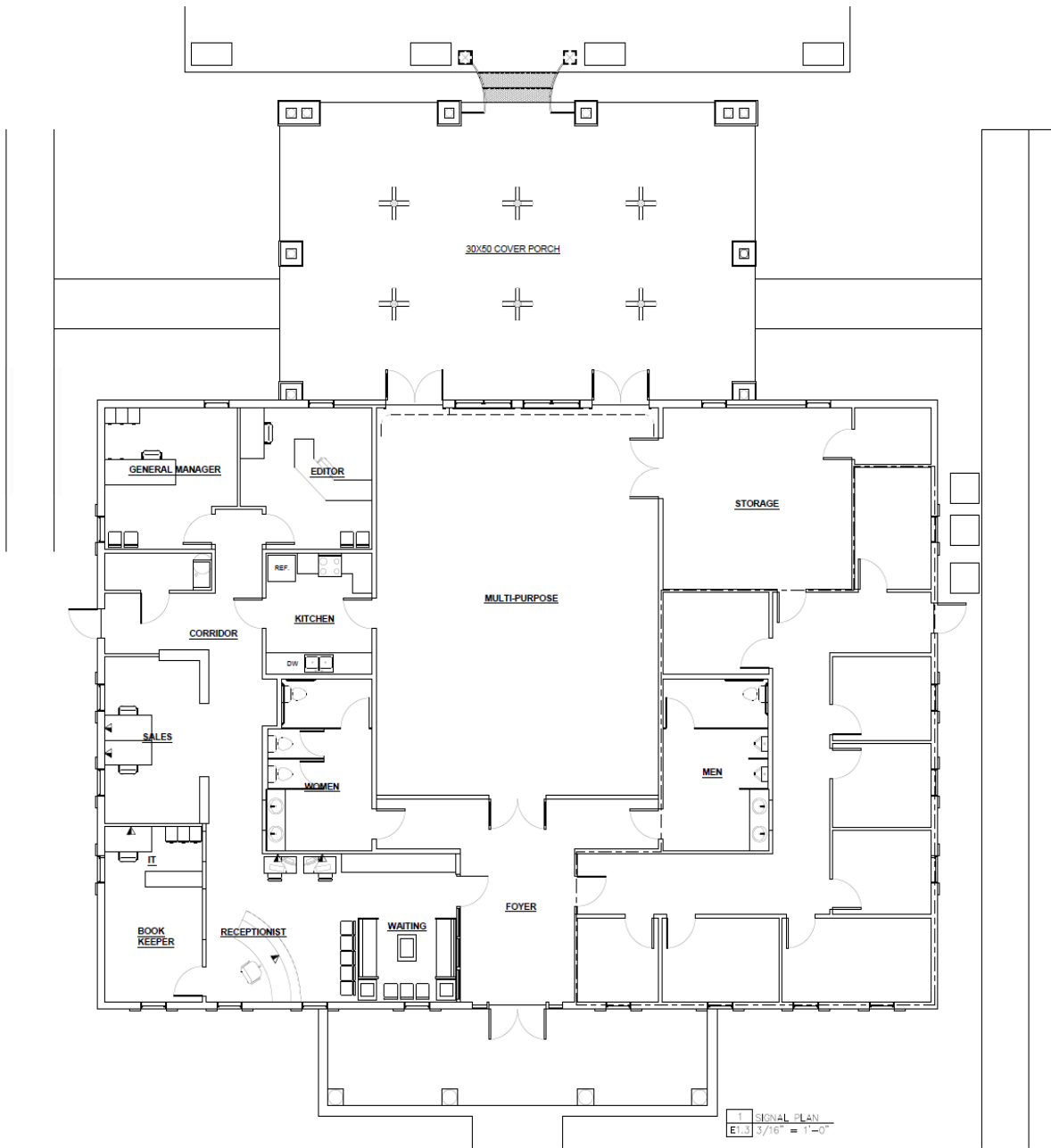
Ideal Location



Drive Times

- - - - - 7.2 Miles to Effingham County Courthouse / Approx. 12 minute drive
- - - - - 7.4 Miles to Effingham Hospital / Approx. 10 minute drive
- - - - - 19.7 Miles to Downtown Savannah / Approx. 35 minute drive
- - - - - 20.3 Miles to Hyundai Megasite / Approx. 34 minute drive

Building Floorplan



Interior Photos





Contact Us

Andrew Benton

Senior Associate

+1 912 656 1878

andrew.bentonjr@cbre.com

CBRE, Inc.

+1 912 228 3528

144 Habersham St

Savannah, GA 31401

© 2024 CBRE, Inc. All rights reserved. This information has been obtained from sources believed reliable, but has not been verified for accuracy or completeness. You should conduct a careful, independent investigation of the property and verify all information. Any reliance on this information is solely at your own risk. CBRE and the CBRE logo are service marks of CBRE, Inc. All other marks displayed on this document are the property of their respective owners, and the use of such logos does not imply any affiliation with or endorsement of CBRE. Photos herein are the property of their respective owners. Use of these images without the express written consent of the owner is prohibited.