

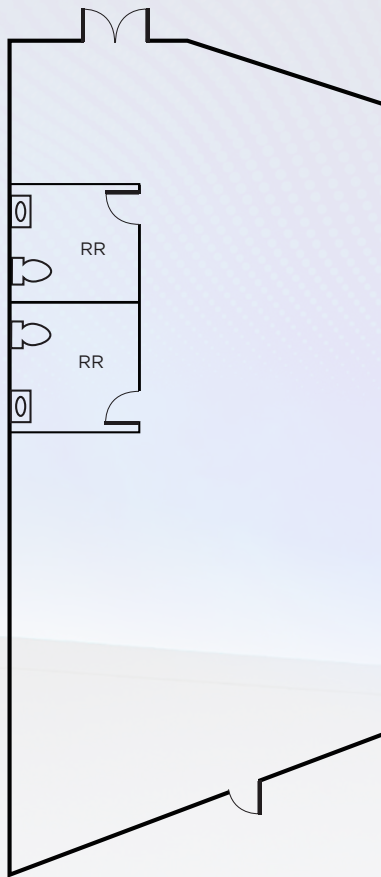
MENLO BUSINESS PARK



FRANK COX 408.982.8422
frank.cox@nrmk.com CA RE License #00889881

NEWMARK

SAN JOSE, CA
AVAILABILITY SUMMARY
±2,531 SF - ±5,651 SF



(Floorplan Not to Scale)

2362 QUME DRIVE | SUITE G:

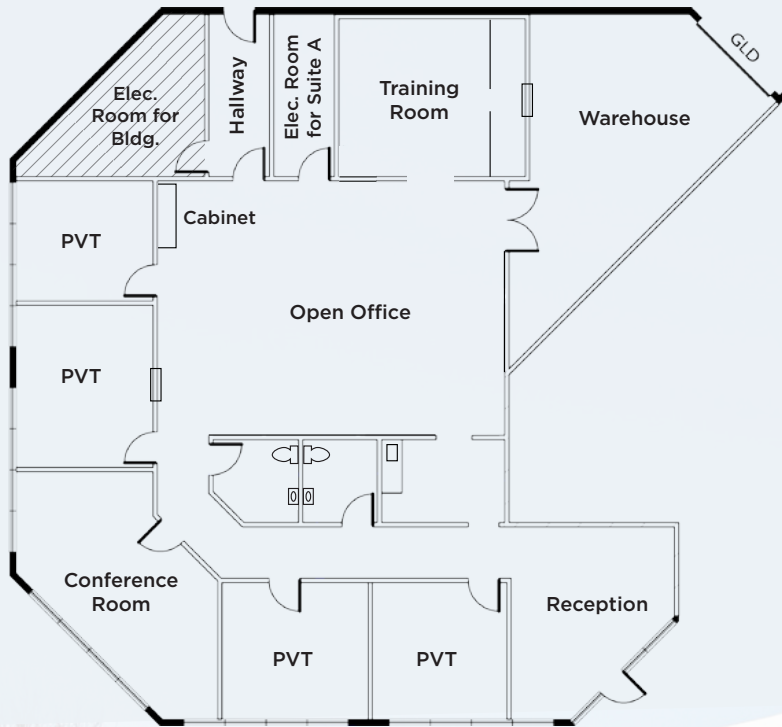
±2,531 SQUARE FEET

- Shell Condition
- 100% Office Area
- Interior to Suit
- Two (2) Restrooms
- Corner Unit with Great Glassline
- Sprinklered
- Call to Tour
- Available Now



2372 QUME DRIVE | SUITE A:

±3,698 SQUARE FEET



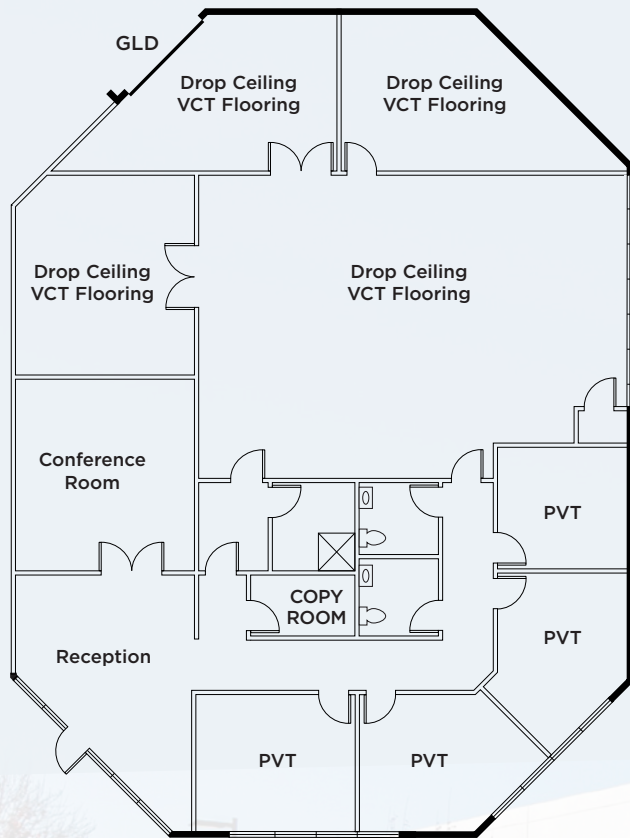
(Floorplan Not to Scale)

- Corner Location
- Great Glassline
- ±95% HVAC Office/R&D Area
- ±5% Warehouse Area
- Reception Area
- One (1) Conference Room
- Four (4) Private Offices
- Open Office Area
- One (1) Grade Level Truck Door
- Available Now



FRANK COX 408.982.8422

frank.cox@nmrk.com CA RE License #00889881



(Floorplan Not to Scale)

2372 QUME DRIVE | SUITE F:

±4,400 SQUARE FEET

- Corner Location
- Great Glassline
- ±100% Drop Ceiling HVAC
- Reception Area
- One (1) Conference Room
- Four (4) Private Offices
- ±50% Drop Ceiling VCT Flooring Lab Area
- Two (2) Restrooms
- Shower
- One (1) Grade Level Truck Door
- Call to Tour
- Available Now



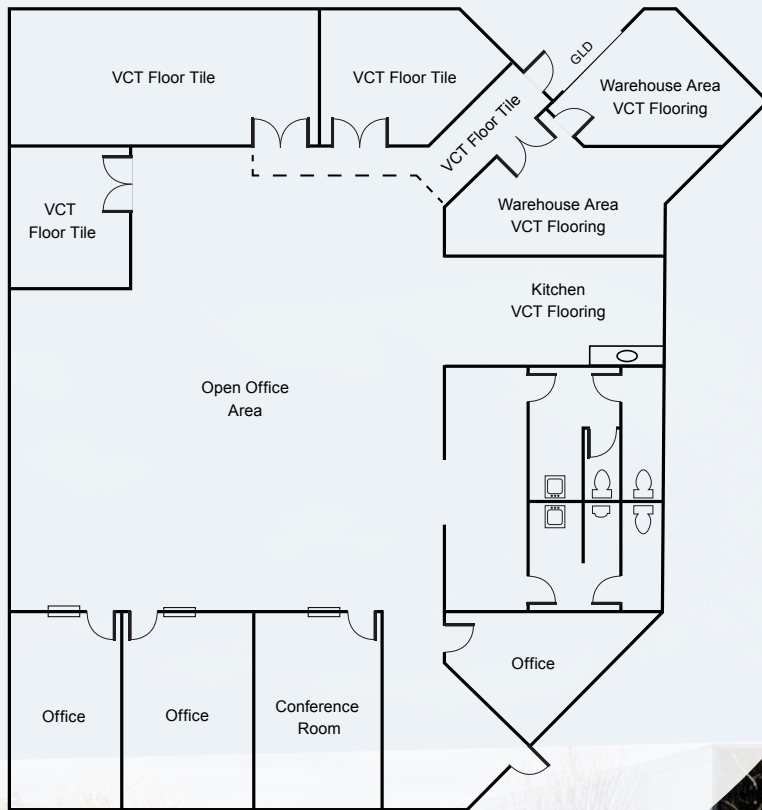
FRANK COX 408.982.8422

frank.cox@nmrk.com CA RE License #00889881

2360 QUME DRIVE | SUITE C:

±4,526 SQUARE FEET

- ±90% Office/Lab Area
- ±10% Warehouse Area
- Two (2) Private Offices
- Open Office Area
- Conference Room
- Kitchenette
- Two (2) Restrooms
- One (1) Grade Level Truck Door
- Call to Tour
- Available Now



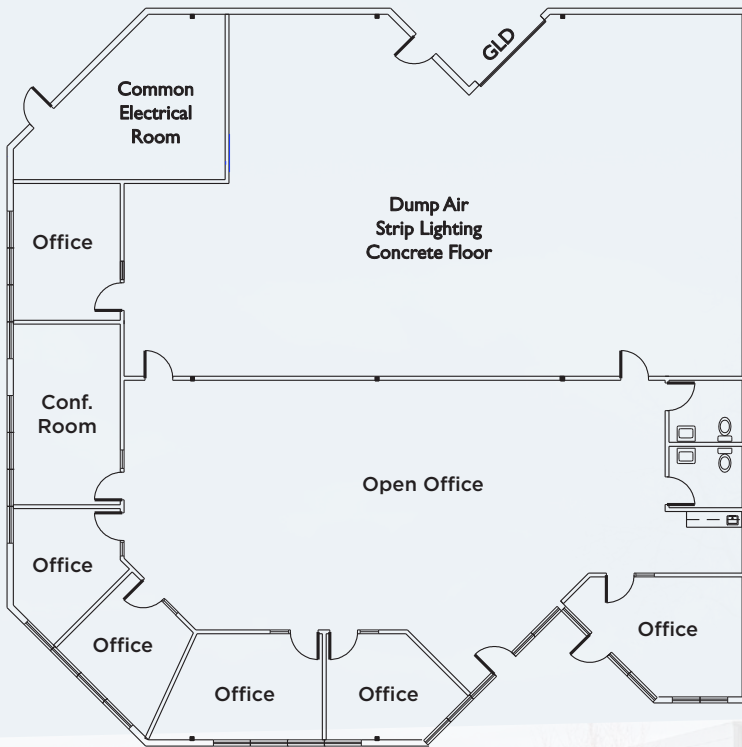
(Floorplan Not to Scale)



2360 QUME DRIVE | SUITE E&F:

±5,651 SQUARE FEET

- ±50% Office Area
- ±50% Assembly/
Warehouse Area
- 100% HVAC
- Six (6) Private Offices
- Open Office Area
- Conference Room
- Kitchenette
- Two (2) Restrooms
- One (1) Grade Level
Truck Door
- Call to Tour
- Available Now



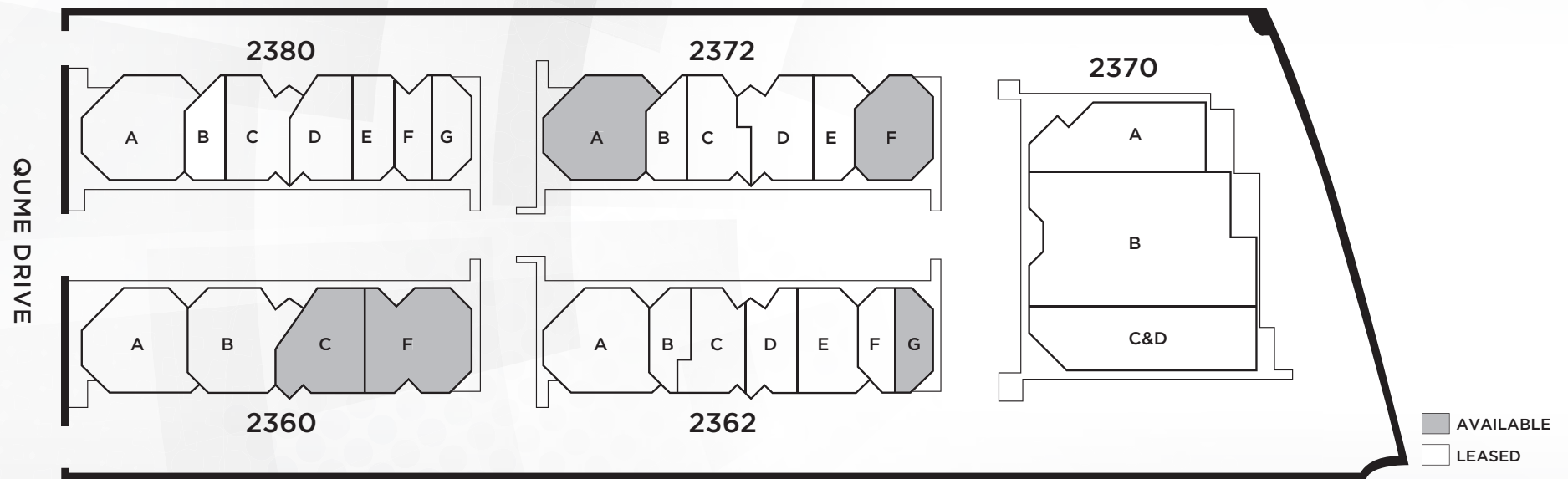
(Floorplan Not to Scale)



FRANK COX 408.982.8422

frank.cox@nmrk.com CA RE License #00889881

SITE PLAN



LOCATION MAP

MILPITAS



SANTA CLARA

SAN JOSE



MENLO BUSINESS PARK

SAN JOSE, CA

FRANK COX | 408.982.8422
frank.cox@nmrk.com | CA RE License #00889881



3055 Olin Avenue, Suite 2200, San Jose, CA 95128

NEWMARK

The distributor of this communication is performing acts for which a real estate license is required. The information contained herein has been obtained from sources deemed reliable but has not been verified and no guarantee, warranty or representation, either express or implied, is made with respect to such information. Terms of sale or lease and availability are subject to change or withdrawal without notice. 7806092021 • 10/25