

# 1970 broadway

OAKLAND

Office Space  
FOR LEASE

1970BROADWAY.COM

Jones Lang LaSalle Brokerage, Inc. Real Estate License #: 0185620





# Property Highlights



Class A, highly improved office space



Recently renovated lobby



12,000 SF floor plates offer an abundance of glass-line



Floor-to-ceiling windows



On-site property manager and building engineer



Parking garage located below ground



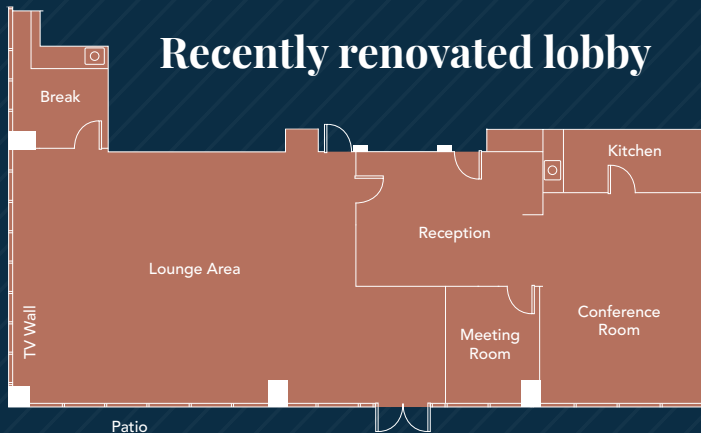
New conference center



New amenity lounge



Outdoor patio



## Recently renovated lobby





# Location Highlights



Direct BART access through  
the building's basement level



In the vibrant neighborhood of  
Uptown Oakland



Lake Merritt  
and city views



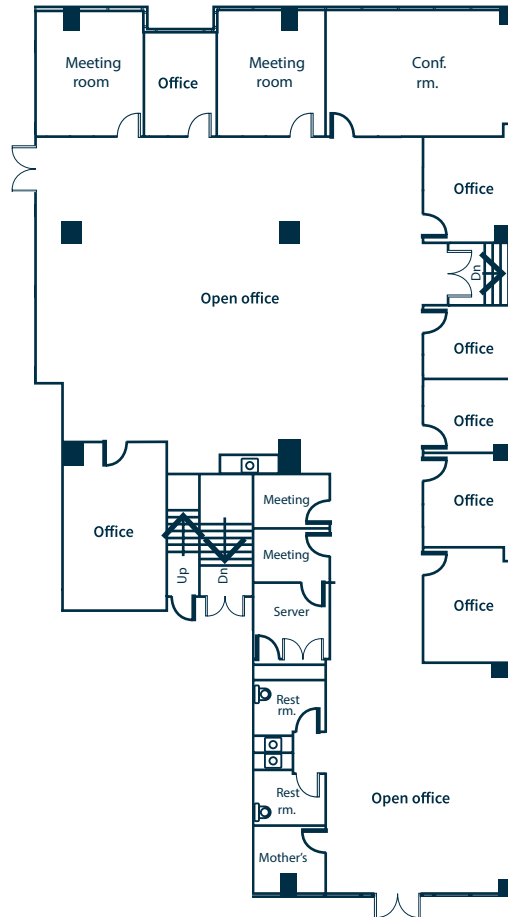
# Availabilities

RSF	SUITE	DESCRIPTION
±6,193	100	6 private offices, 2 small conference rooms, 1 large conference room, sepearate restroom stalls, server room, kitchen, open office space
±3,638	425	9 private offices, kitchen, conference room
±9,780	500	Corner space, direct elevator exposure, kitchen natural light, mostly open plan
±1,798	550	3 private offices, kitchen
±1,802	615	3 private offices, kitchen
±1,033	670	3 private offices, conference room
±1,574	700	4 private offices
±8,036	900	15 private offices, conference room, server room kitchen
±9,773	900/940	19 private offices, conference room, kitchen and server room kitchen
±1,737	940	4 private offices, kitchen
±1,284	1020	4 private offices
±1,460	1040	2 private offices, kitchenette
±3,266	1045	2 private offices, 3 large conference rooms, 1 small conference room
±1,883	1125	3 private offices, kitchen, open space
±6,652	1150	11 private offices, conference room, kitchen, breakout room
±4,635	1200	Private office intensive
±1,630	1225	2 private offices, conference room, kitchen



# Floor 1 – Suite 100

±6,193 RSF



**1970**  
**broadway**  
OAKLAND

**Charlie Sweeney**  
Vice President  
charlie.sweeney@jll.com  
510.593.8034  
LIC #01987199

**Kristi Childers**  
Managing Director  
kristi.childers@jll.com  
510.812.2878  
LIC #01997043

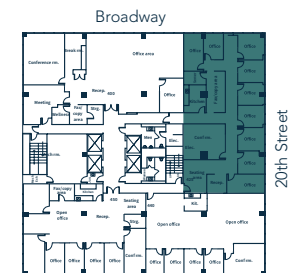
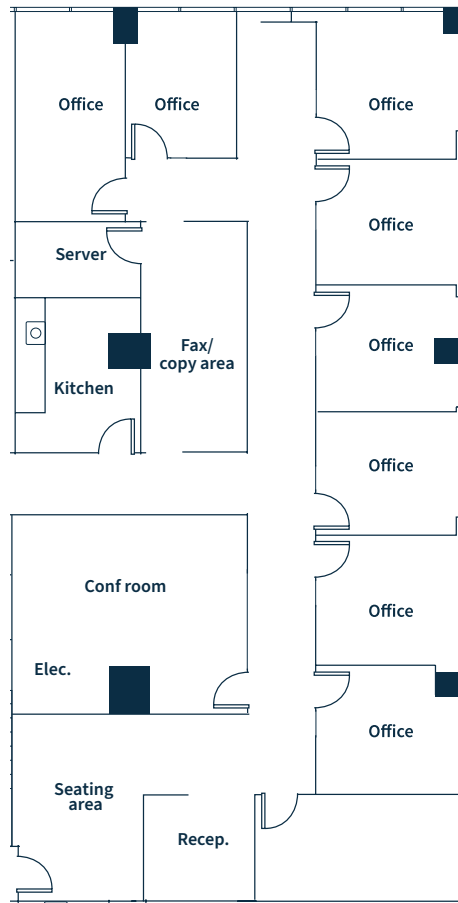
**Knute Bucklew**  
Senior Managing Director  
knute.bucklew@jll.com  
925.586.7880  
LIC #01332731





# Floor 4 - Suite 425

±3,638 RSF



**1970**  
**broadway**  
OAKLAND

**Charlie Sweeney**  
Vice President  
charlie.sweeney@jll.com  
510.593.8034  
LIC #01987199

**Kristi Childers**  
Managing Director  
kristi.childers@jll.com  
510.812.2878  
LIC #01997043

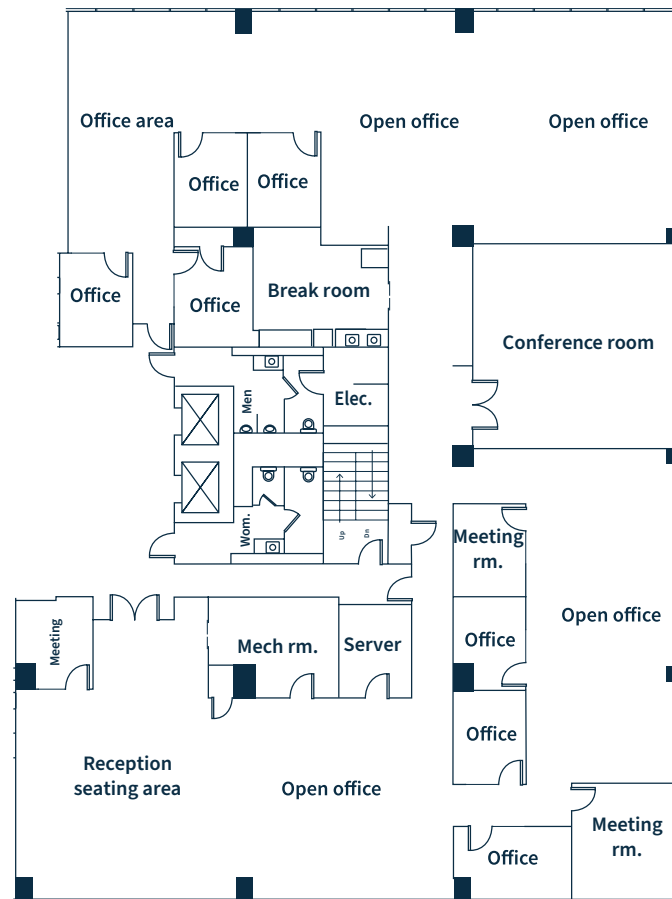
**Knute Bucklew**  
Senior Managing Director  
knute.bucklew@jll.com  
925.586.7880  
LIC #01332731





# Floor 5 - Suite 500

±9,780 RSF



**1970**  
**broadway**  
OAKLAND

**Charlie Sweeney**  
Vice President  
charlie.sweeney@jll.com  
510.593.8034  
LIC #01987199

**Kristi Childers**  
Managing Director  
kristi.childers@jll.com  
510.812.2878  
LIC #01997043

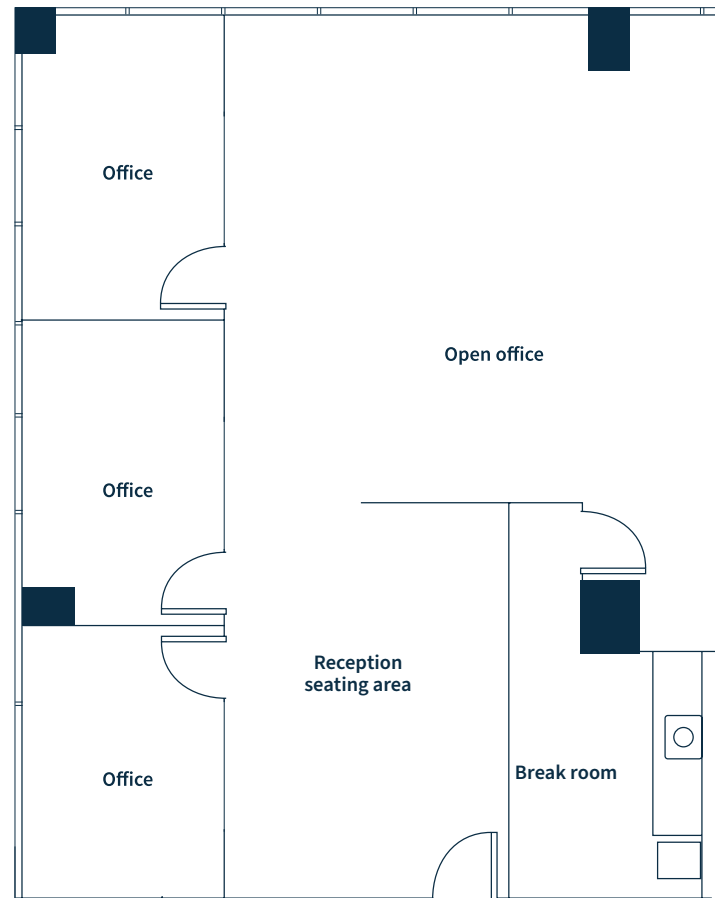
**Knute Bucklew**  
Senior Managing Director  
knute.bucklew@jll.com  
925.586.7880  
LIC #01332731





# Floor 5 - Suite 550

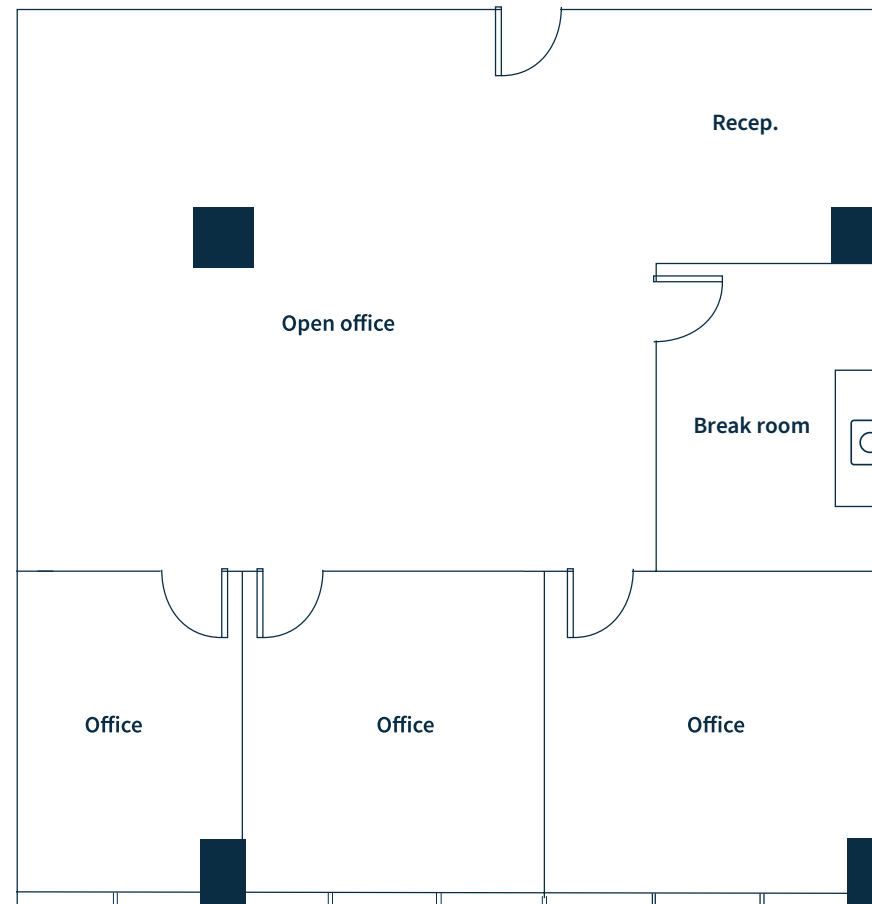
±1,798 RSF





# Floor 6 - Suite 615

±1,802 RSF



**1970**  
**broadway**  
OAKLAND

**Charlie Sweeney**  
Vice President  
charlie.sweeney@jll.com  
510.593.8034  
LIC #01987199

**Kristi Childers**  
Managing Director  
kristi.childers@jll.com  
510.812.2878  
LIC #01997043

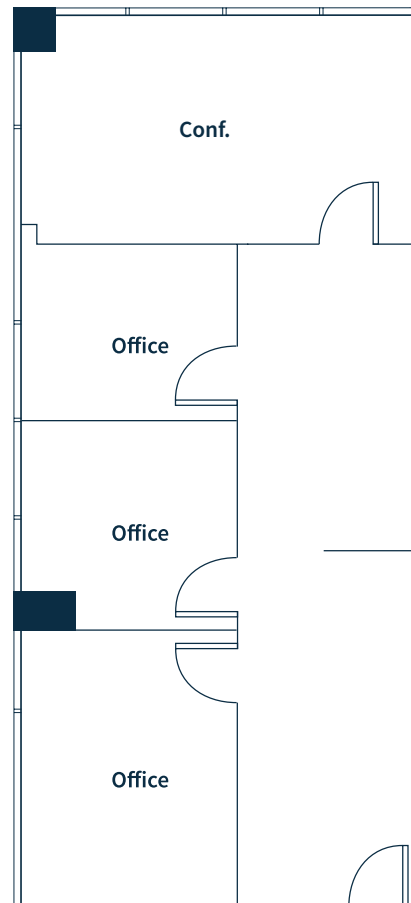
**Knute Bucklew**  
Senior Managing Director  
knute.bucklew@jll.com  
925.586.7880  
LIC #01332731





# Floor 6 - Suite 670

±1,033 RSF



**1970**  
**broadway**  
OAKLAND

**Charlie Sweeney**  
Vice President  
charlie.sweeney@jll.com  
510.593.8034  
LIC #01987199

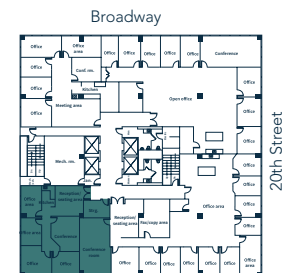
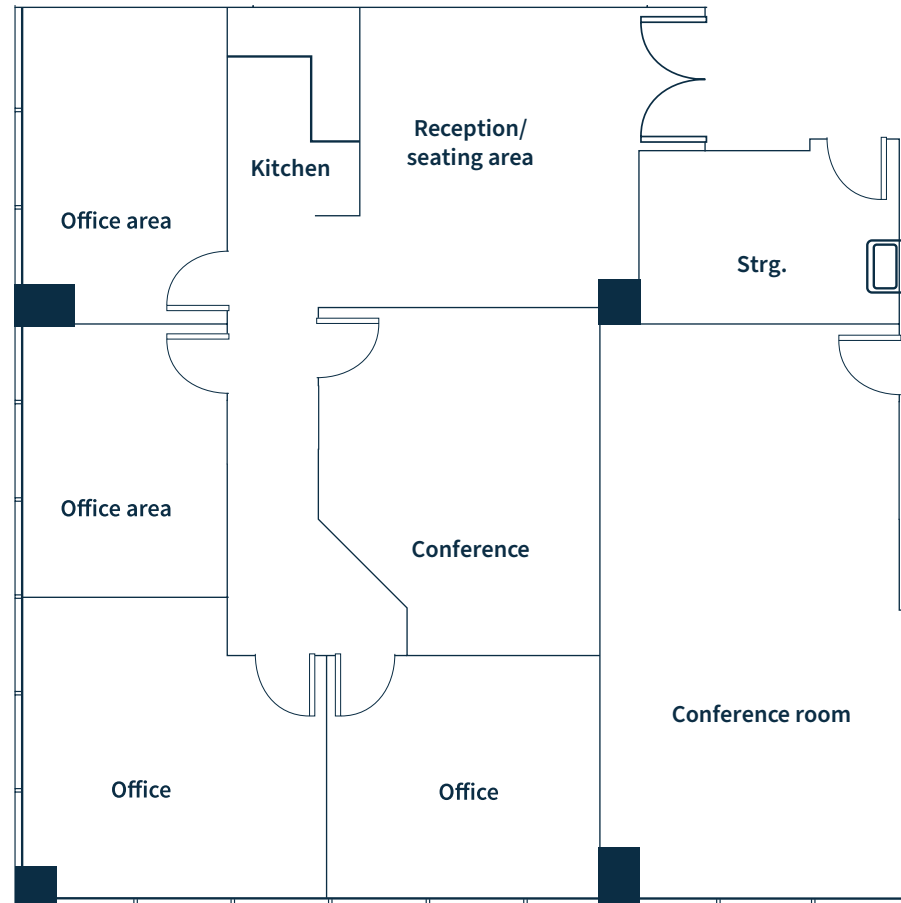
**Kristi Childers**  
Managing Director  
kristi.childers@jll.com  
510.812.2878  
LIC #01997043

**Knute Bucklew**  
Senior Managing Director  
knute.bucklew@jll.com  
925.586.7880  
LIC #01332731



# Floor 7 - Suite 700

±1,574 RSF



**1970**  
**broadway**  
OAKLAND

**Charlie Sweeney**  
Vice President  
charlie.sweeney@jll.com  
510.593.8034  
LIC #01987199

**Kristi Childers**  
Managing Director  
kristi.childers@jll.com  
510.812.2878  
LIC #01997043

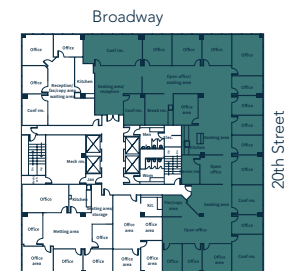
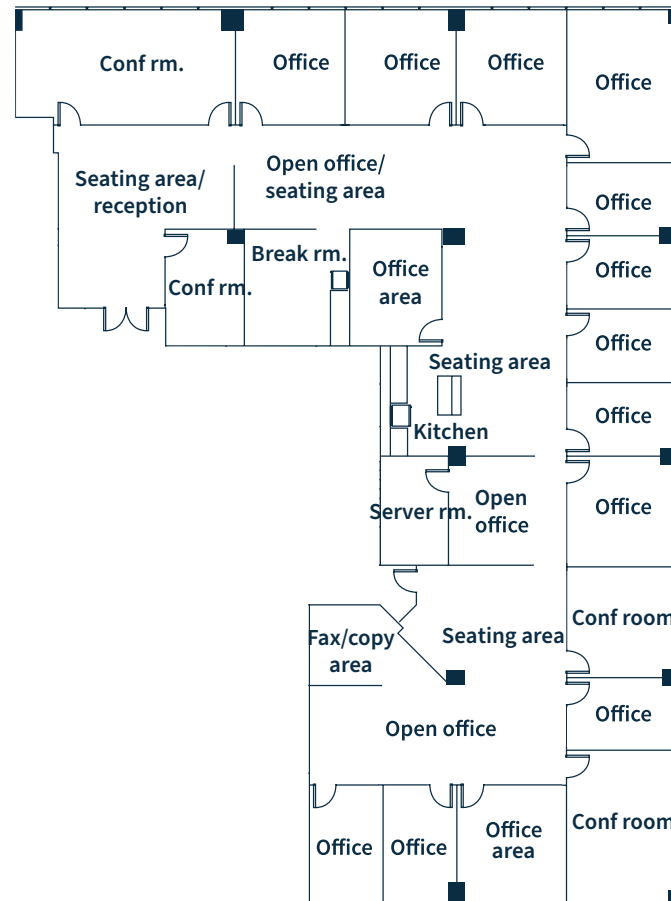
**Knute Bucklew**  
Senior Managing Director  
knute.bucklew@jll.com  
925.586.7880  
LIC #01332731





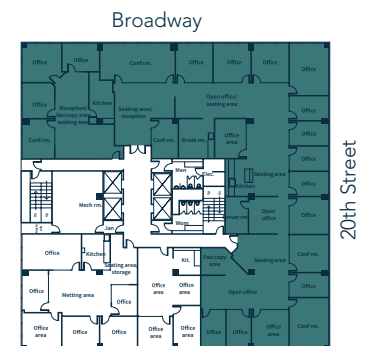
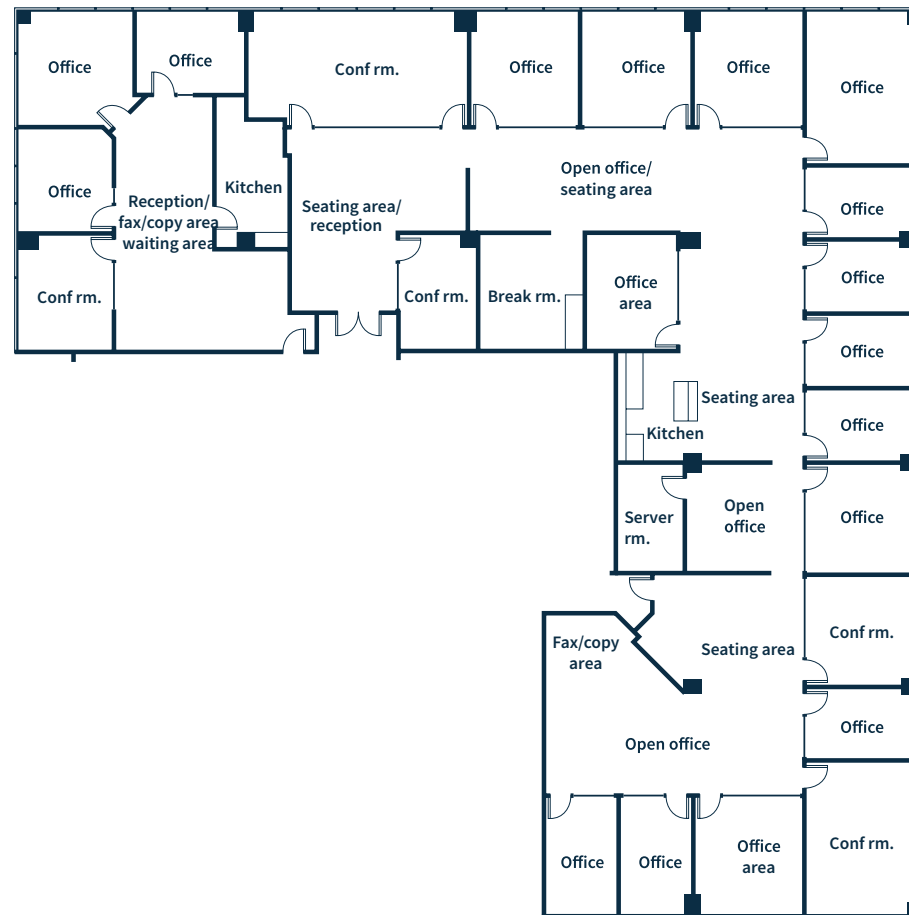
# Floor 9 – Suite 900

±8,036 RSF



# Floor 9 - Suite 900/940

±9,773 RSF



**1970**  
**broadway**  
OAKLAND

**Charlie Sweeney**  
Vice President  
charlie.sweeney@jll.com  
510.593.8034  
LIC #01987199

**Kristi Childers**  
Managing Director  
kristi.childers@jll.com  
510.812.2878  
LIC #01997043

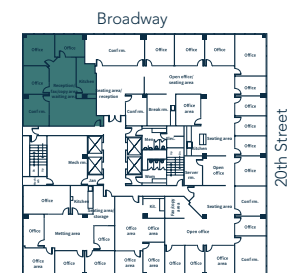
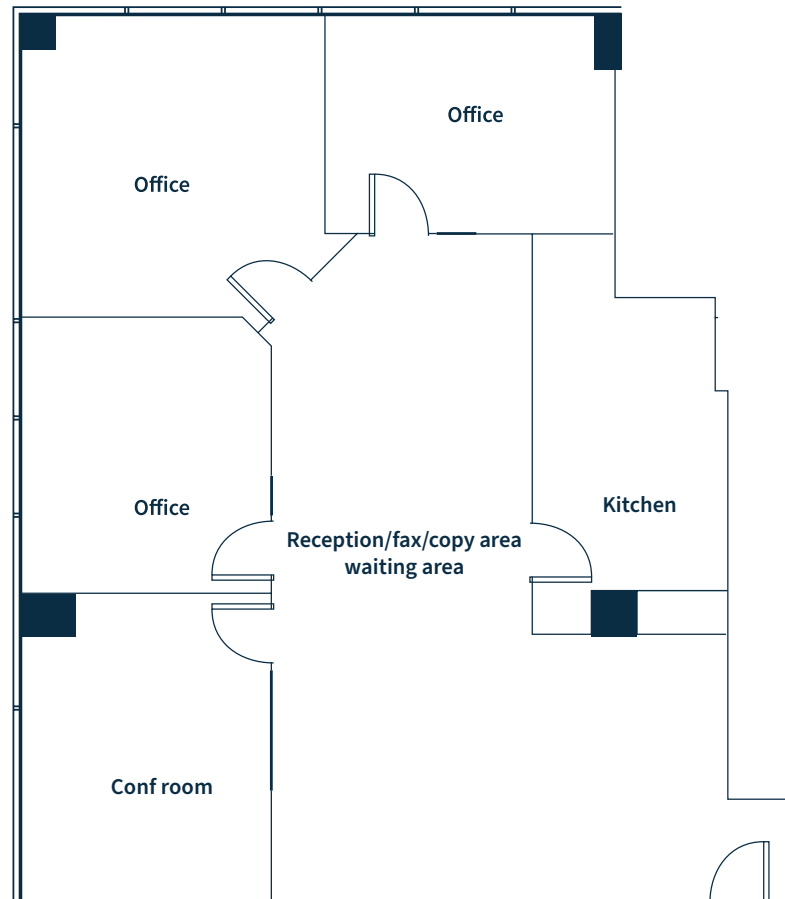
**Knute Bucklew**  
Senior Managing Director  
knute.bucklew@jll.com  
925.586.7880  
LIC #01332731





# Floor 9 - Suite 940

±1,737 RSF



**1970**  
**broadway**  
OAKLAND

**Charlie Sweeney**  
Vice President  
charlie.sweeney@jll.com  
510.593.8034  
LIC #01987199

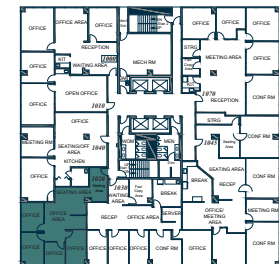
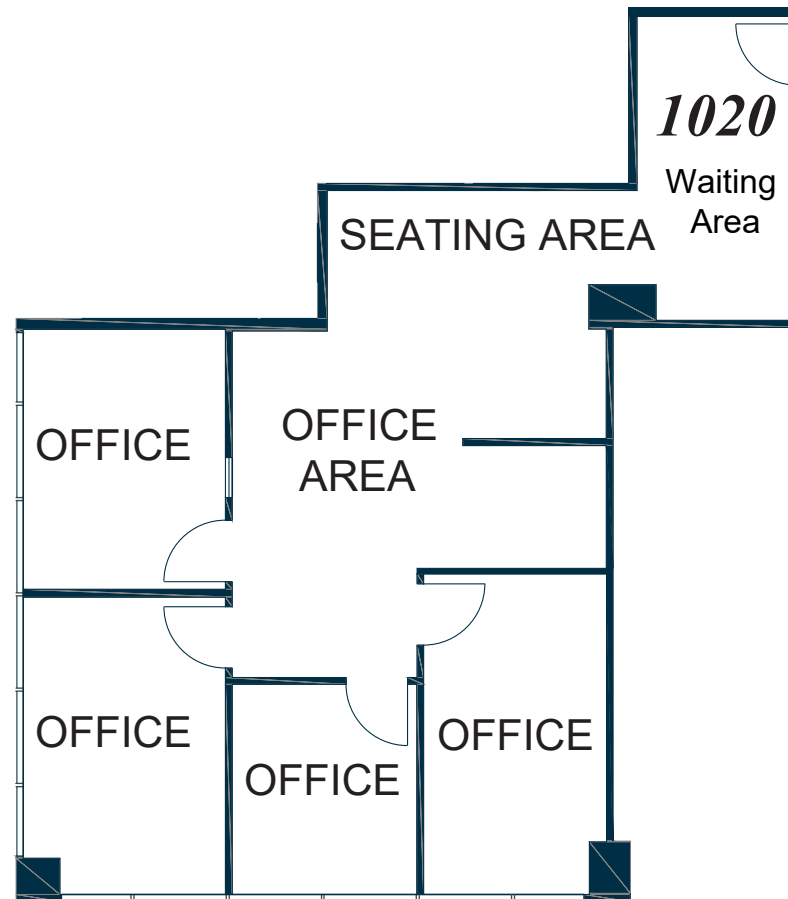
**Kristi Childers**  
Managing Director  
kristi.childers@jll.com  
510.812.2878  
LIC #01997043

**Knute Bucklew**  
Senior Managing Director  
knute.bucklew@jll.com  
925.586.7880  
LIC #01332731



# Floor 10 - Suite 1020

±1,284 RSF



**1970**  
**broadway**  
OAKLAND

**Charlie Sweeney**  
Vice President  
charlie.sweeney@jll.com  
510.593.8034  
LIC #01987199

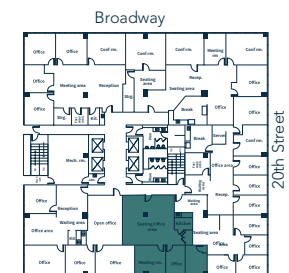
**Kristi Childers**  
Managing Director  
kristi.childers@jll.com  
510.812.2878  
LIC #01997043

**Knute Bucklew**  
Senior Managing Director  
knute.bucklew@jll.com  
925.586.7880  
LIC #01332731



# Floor 10 - Suite 1040

±1,460 RSF



**1970**  
**broadway**  
OAKLAND

**Charlie Sweeney**  
Vice President  
charlie.sweeney@jll.com  
510.593.8034  
LIC #01987199

**Kristi Childers**  
Managing Director  
kristi.childers@jll.com  
510.812.2878  
LIC #01997043

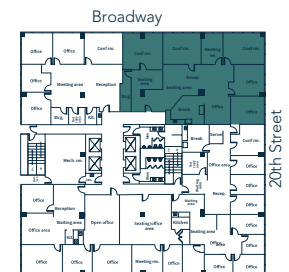
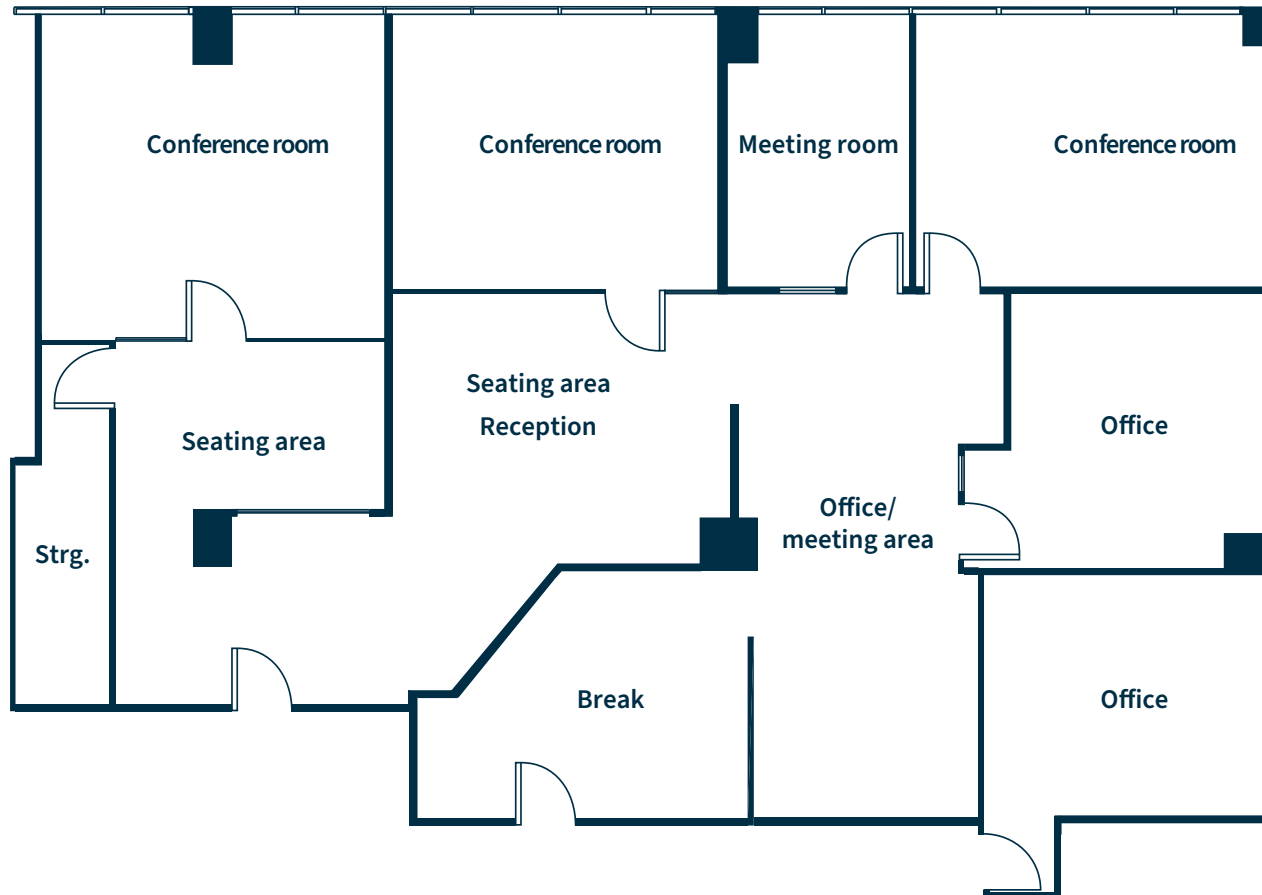
**Knute Bucklew**  
Senior Managing Director  
knute.bucklew@jll.com  
925.586.7880  
LIC #01332731





# Floor 10 - Suite 1045

±3,266 RSF



**1970**  
**broadway**  
OAKLAND

**Charlie Sweeney**  
Vice President  
charlie.sweeney@jll.com  
510.593.8034  
LIC #01987199

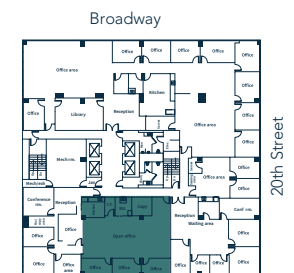
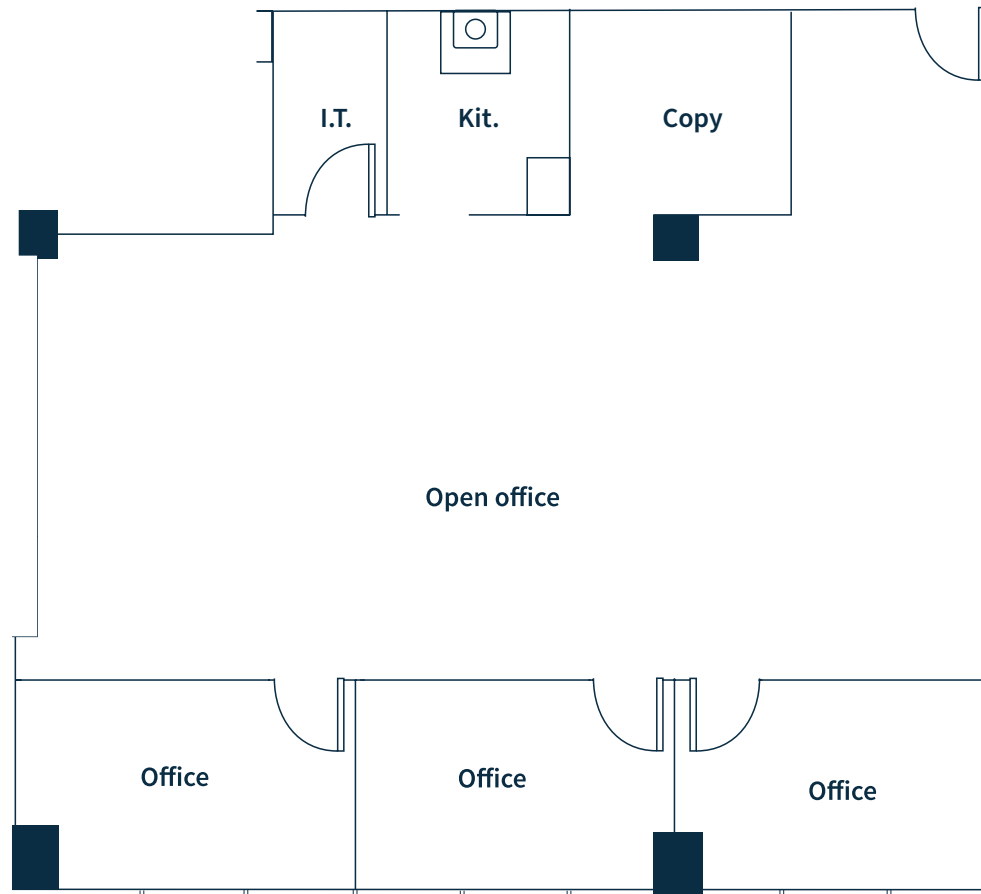
**Kristi Childers**  
Managing Director  
kristi.childers@jll.com  
510.812.2878  
LIC #01997043

**Knute Bucklew**  
Senior Managing Director  
knute.bucklew@jll.com  
925.586.7880  
LIC #01332731



# Floor 11 - Suite 1125

±1,883 RSF



**1970**  
**broadway**  
OAKLAND

**Charlie Sweeney**  
Vice President  
charlie.sweeney@jll.com  
510.593.8034  
LIC #01987199

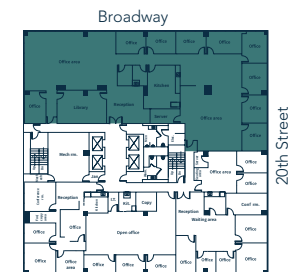
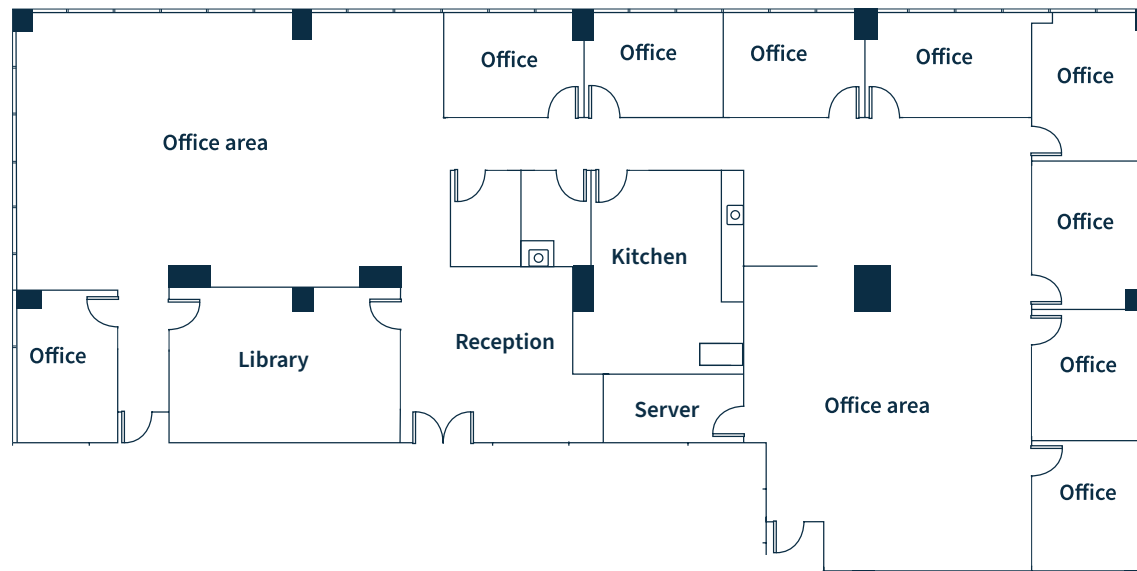
**Kristi Childers**  
Managing Director  
kristi.childers@jll.com  
510.812.2878  
LIC #01997043

**Knute Bucklew**  
Senior Managing Director  
knute.bucklew@jll.com  
925.586.7880  
LIC #01332731



# Floor 11 - Suite 1150

±6,652 RSF



**1970**  
**broadway**  
OAKLAND

**Charlie Sweeney**  
Vice President  
charlie.sweeney@jll.com  
510.593.8034  
LIC #01987199

**Kristi Childers**  
Managing Director  
kristi.childers@jll.com  
510.812.2878  
LIC #01997043

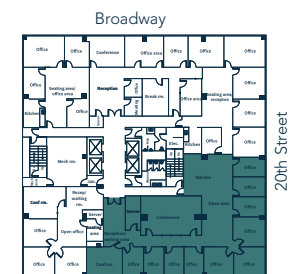
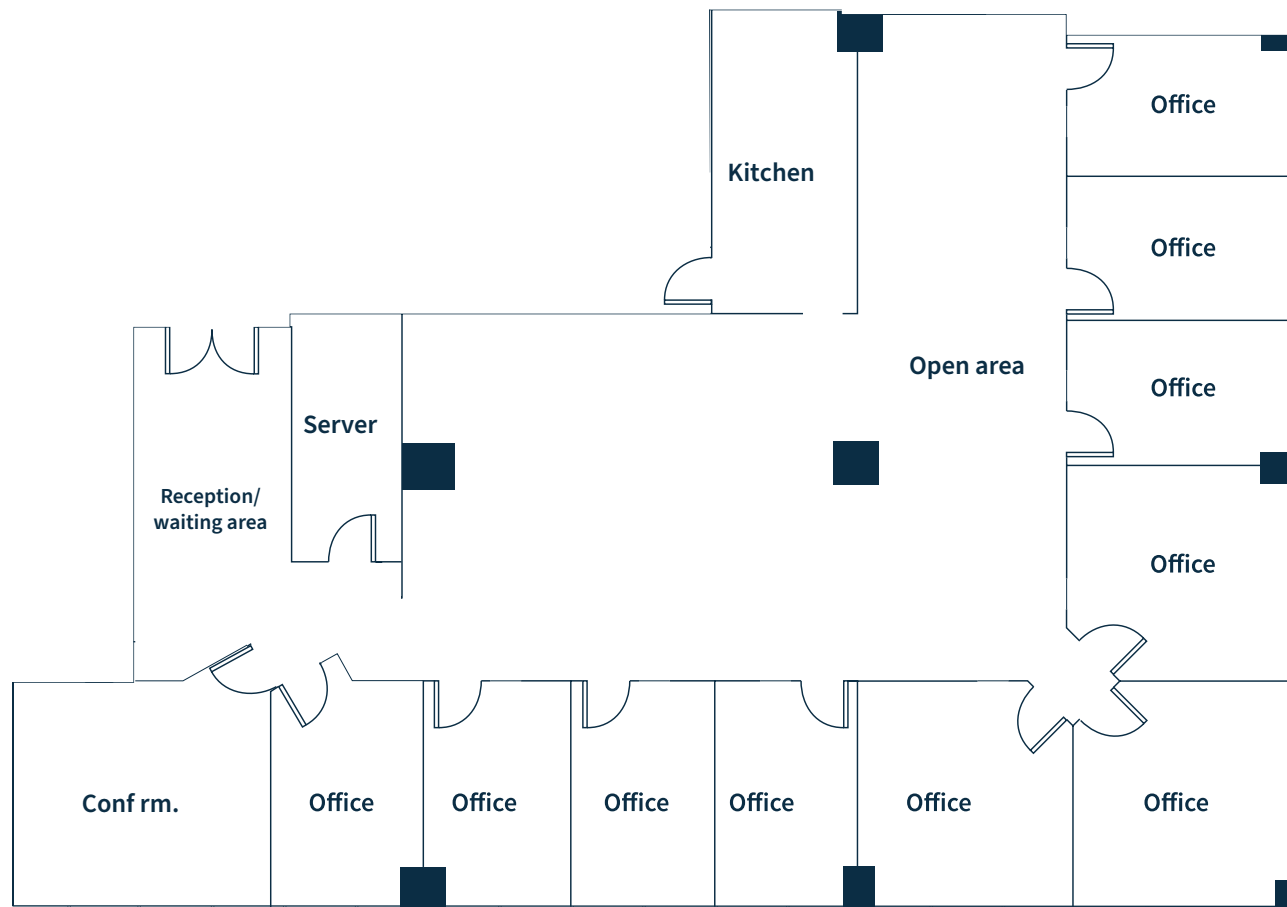
**Knute Bucklew**  
Senior Managing Director  
knute.bucklew@jll.com  
925.586.7880  
LIC #01332731





# Floor 12 - Suite 1200

±4,635 RSF



**1970**  
**broadway**  
OAKLAND

**Charlie Sweeney**  
Vice President  
charlie.sweeney@jll.com  
510.593.8034  
LIC #01987199

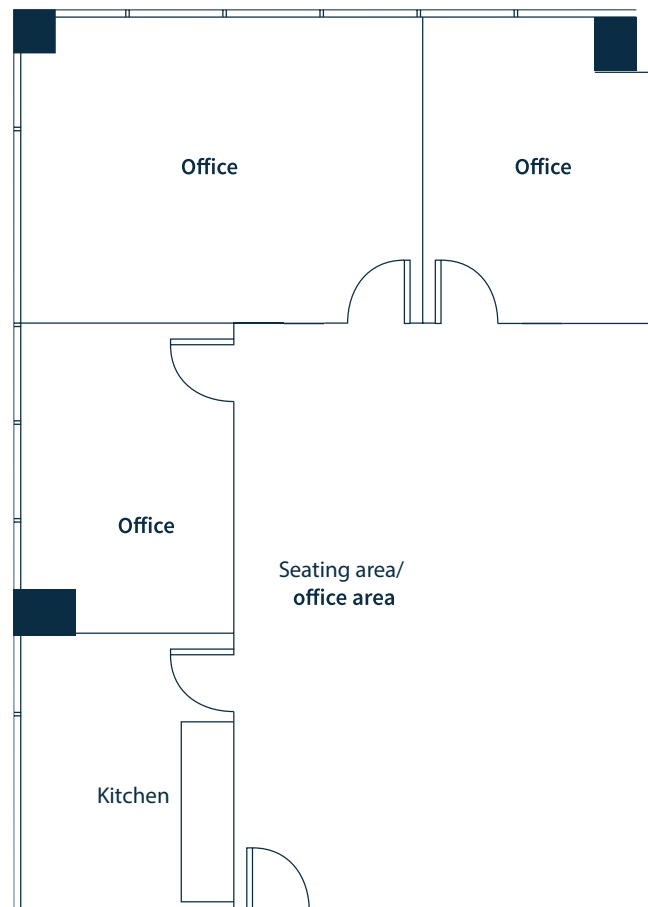
**Kristi Childers**  
Managing Director  
kristi.childers@jll.com  
510.812.2878  
LIC #01997043

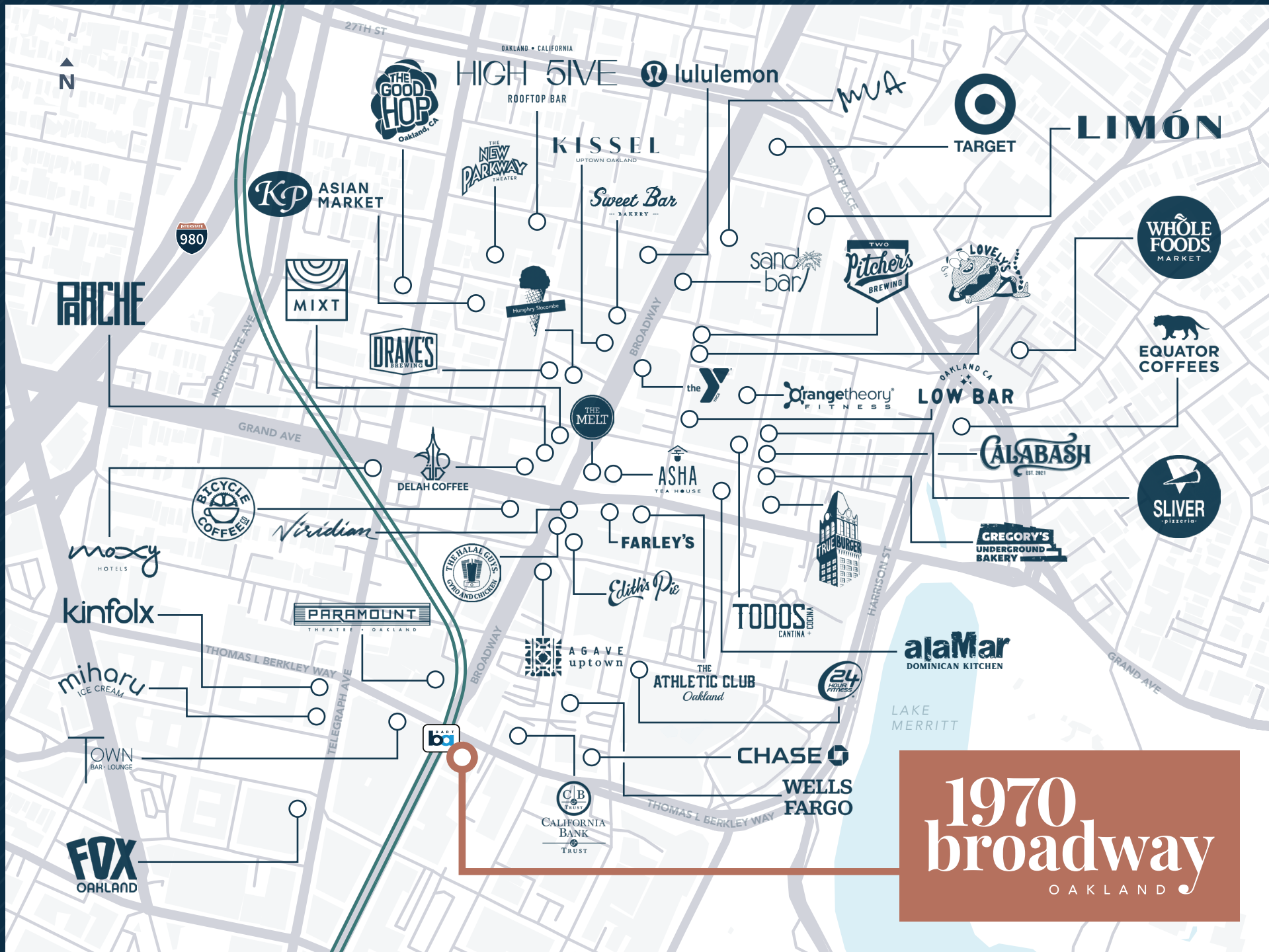
**Knute Bucklew**  
Senior Managing Director  
knute.bucklew@jll.com  
925.586.7880  
LIC #01332731



# Floor 12 - Suite 1225

±1,630 RSF







# 1970 broadway

OAKLAND

**Charlie Sweeney**

Vice President  
charlie.sweeney@jll.com  
510.593.8034  
LIC #01987199

**Kristi Childers**

Managing Director  
kristi.childers@jll.com  
510.812.2878  
LIC #01997043

**Knute Bucklew**

Senior Managing Director  
knute.bucklew@jll.com  
925.586.7880  
LIC #01332731



Although information has been obtained from sources deemed reliable, neither Owner nor JLL makes any guarantees, warranties or representations, express or implied, as to the completeness or accuracy as to the information contained herein. Any projections, opinions, assumptions or estimates used are for example only. There may be differences between projected and actual results, and those differences may be material. The Property may be withdrawn without notice. Neither Owner nor JLL accepts any liability for any loss or damage suffered by any party resulting from reliance on this information. If the recipient of this information has signed a confidentiality agreement regarding this matter, this information is subject to the terms of that agreement. ©2025 Jones Lang LaSalle IP, Inc. All rights reserved.