

**MULTI-FAMILY  
UNDERWAY  
DEVELOPMENT PROJECT  
HAMMOND WISCONSIN**

**Applegate Inc.**



Commercial Real Estate Sales and Leasing  
Property Management  
www.applegatecommercial.com

651-230-0762

PO Box 32  
New Richmond, WI 54017  
1940 Greeley St. #202,  
Stillwater, MN 55082

**\$1,100,000.00**



This development opportunity consists of a site that already has its approved and completed development agreement, including but not limited to the streets, utilities, shovel ready lots, one finished twin home and vacant lots to accommodate building of R-3 type multi-family construction. The total square footage is 82,207 or 1.887 acres.

Exceptional Location, Hammond Wisconsin has a population of approximately 2,257 people and the Median Income of \$117,708 (from: us population.org) Within walking distance of the recently expanded High School that has a premier Athletic Complex. Hammond is a growing community that is located approximately 20 miles from the Hudson I-94 Bridge, immediate access to Interstate 94, within minutes of Hudson, New Richmond, Roberts, and Baldwin.

APPLEGATE INC COMMERCIAL  
REAL ESTATE SALES/LEASING  
252 So. Knowles Ave.  
NEW RICHMOND, WI, 54017  
www.applegatecommercial.com

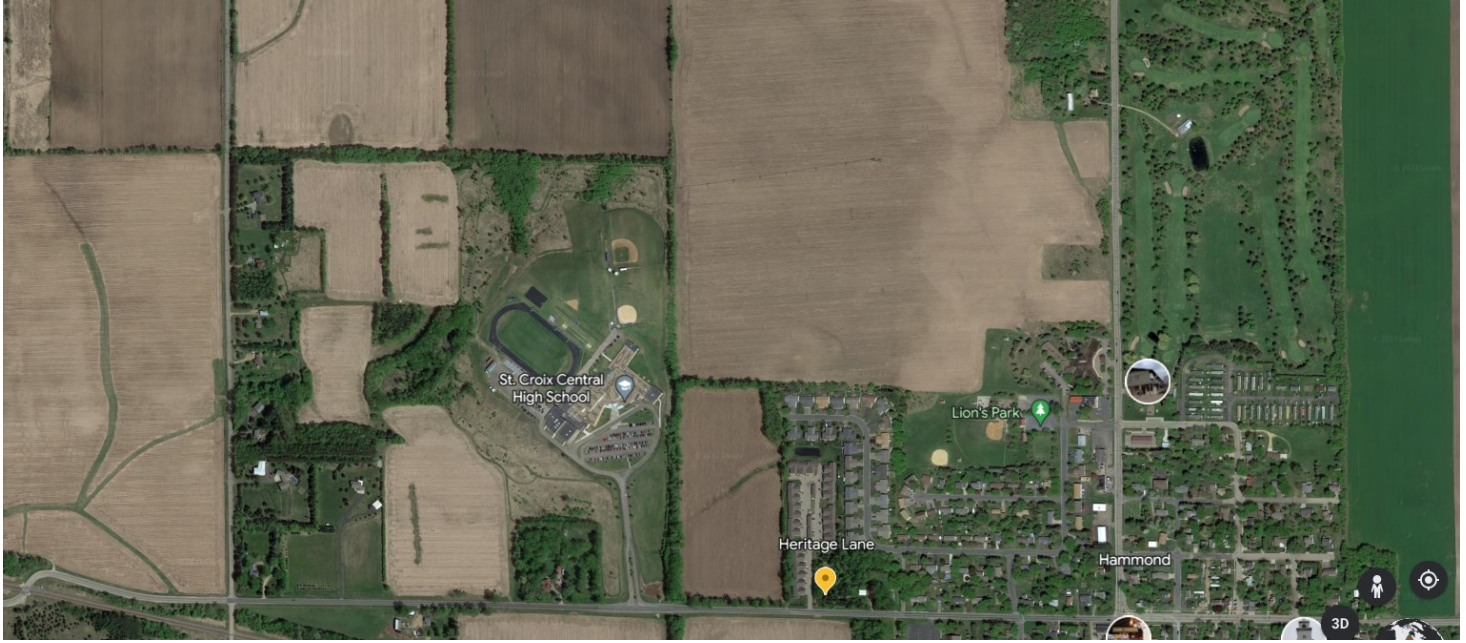
**Tj Wilson**  
Broker  
651.253.6010 Mobile  
tjw@applegateproperties.com

**Nicholas Wilson**  
Agent  
651.757.8378 Mobile  
nicholas@applegateproperties.com



# PROPERTY PHOTOS

**Multi-Family  
Development Project  
Ready for completion**



**APPLEGATE INC COMMERCIAL REAL ESTATE**  
**SALES AND LEASING**  
252 So. Knowles Ave.  
NEW RICHMOND, WI, 54017  
[www.applegatecommercial.com](http://www.applegatecommercial.com)

**Tj Wilson**  
Broker  
651.253.6010 Mobile  
[tjw@applegateproperties.com](mailto:tjw@applegateproperties.com)

**Nicholas Wilson**  
Agent  
651.757.8378 Mobile  
[Nicholas@applegateproperties.com](mailto:Nicholas@applegateproperties.com)



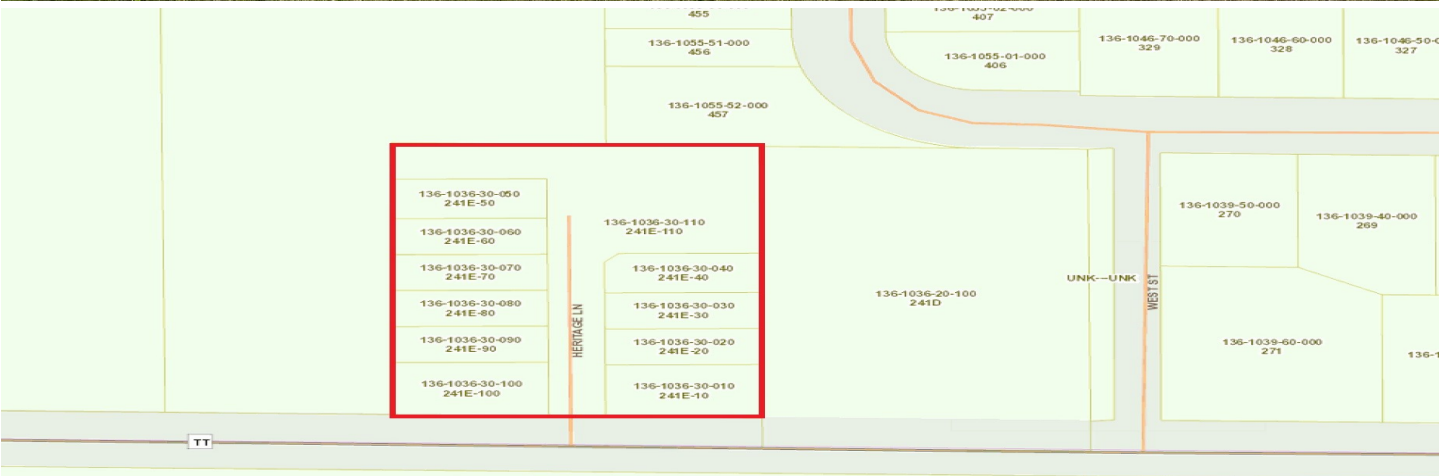


APPLEGATE INC COMMERCIAL REAL ESTATE  
SALES AND LEASING  
252 So. Knowles Ave.  
NEW RICHMOND, WI, 54017  
[www.applegatecommercial.com](http://www.applegatecommercial.com)

**Tj Wilson**  
Broker  
651.253.6010 Mobile  
[tjw@applegateproperties.com](mailto:tjw@applegateproperties.com)

**Nicholas Wilson**  
Agent  
651.757.8378 Mobile  
[Nicholas@applegatepropertie.com](mailto:Nicholas@applegatepropertie.com)





**APPLEGATE INC**  
**COMMERCIAL REAL ESTATE SALES /**  
**LEASING**  
 252 So. Knowles Ave.  
 NEW RICHMOND, WI, 54017  
[www.applegatecommercial.com](http://www.applegatecommercial.com)

**Tj Wilson**  
 Broker  
 651.253.6010 Mobile  
[tjw@applegateproperties.com](mailto:tjw@applegateproperties.com)

**Nicholas Wilson**  
 Agent  
 651.757.8378 Mobile  
[nicholas@applegateproperties.com](mailto:nicholas@applegateproperties.com)