

LOCATION

Property Address	322 W South St Union, SC 29379-2839
County	Union County, SC

GENERAL PARCEL INFORMATION

Parcel ID/Tax ID	073-15-01-015 000
Alternate Parcel ID	
Account Number	
District/Ward	01
2010 Census Trct/Blk	302/2
Assessor Roll Year	2023

PROPERTY SUMMARY

Property Type	Exempt
Land Use	Exo
Improvement Type	

Square Feet

CURRENT OWNER

Name	Union Hospital District
Mailing Address	322 W South St Union, SC 29379-2839

SCHOOL INFORMATION

These are the closest schools to the property

Foster Park Elementary School	1.2 mi
Elementary: Pre K to 5	Distance
Union County Achievement Academy	0.9 mi
Middle-High: 6 to 12	Distance
Union County High School	3.0 mi
High: 9 to 12	Distance

SALES HISTORY THROUGH 01/29/2024

Date	Amount	Buyer/Owners	Seller	Instrument	No. Parcels	Book/Page Or Document#
7/21/1983		Union Hospital District	Union County			195/772
7/31/1948						88/411

TAX ASSESSMENT

Appraisal	Amount	Assessment	Amount
Appraisal Year	2008	Assessment Year	2008
Appraised Land	\$120,000	Assessed Land	
Appraised Improvements	\$7,108,700	Assessed Improvements	
Total Tax Appraisal	\$7,228,700	Total Assessment	
		Exempt Amount	
		Exempt Reason	

TAXES

Tax Year	City Taxes	County Taxes	Total Taxes
No tax records were found for this parcel.			

PROPERTY CHARACTERISTICS: BUILDING

No Buildings were found for this parcel.

PROPERTY CHARACTERISTICS: EXTRA FEATURES

No extra features were found for this parcel.

PROPERTY CHARACTERISTICS: LOT

Land Use	Exo	Lot Dimensions
Block/Lot		Lot Square Feet
Latitude/Longitude	34.712297°/-81.629261°	Acreage

PROPERTY CHARACTERISTICS: UTILITIES/AREA

Gas Source	Road Type
Electric Source	Topography
Water Source	District Trend
Sewer Source	Special School District 1
Zoning Code	Special School District 2
Owner Type	

LEGAL DESCRIPTION

Subdivision	Plat Book/Page	5/116
Block/Lot	District/Ward	01
Description	Wallace Thomson Hospital 322 W South Street	

INTERNET ACCESS

courtesy of Fiberhomes.com

FEMA FLOOD ZONES

Zone Code	Flood Risk	BFE	Description	FIRM Panel ID	FIRM Panel Eff. Date
X	Minimal		Area of minimal flood hazard, usually depicted on FIRMs as above the 500-year flood level.	45087C0185D	08/02/2011

LISTING ARCHIVE

No Listings found for this parcel.



Union County, SC



Overview



Legend

- Parcels
- Parcel Numbers
- Roads

Parcel ID	073-15-01-015 000	Alternate ID	073-15-01-015 000	Owner Address	UNION HOSPITAL DISTRICT
Sec/Twp/Rng	n/a	Class	EXO		322 W SOUTH STREET UNION SC
Property Address	322 W SOUTH STREET	Acreage	n/a		29379
District	01				
Brief Tax Description	322 W SOUTH STREET				
	(Note: Not ...)				

Date created: 2/5/2025

Last Data Uploaded: 2/5/2025 6:08:06 PM

Developed by SCHNEIDER
GEOSPATIAL

Gilbert B. Bradham, Jr. | *SVN Senior Advisor*



OFFICE | 803.325.1000

CELL | 843.532.1641

@gilbradhamjr29487

gilbert.bradham@svn.com

www.svn-scre.com

116 E. Main Street, Suite 201 | Rock Hill, SC 29730

Union Medical Center

322 W South Street

Union County, South Carolina 29379



- FEATURES:**
- ◇ **Size:** ±7 Acres
 - ◇ **Parcel ID:** 073-15-01-015 (000)
 - ◇ **Jurisdiction:** City of Union
 - ◇ **Zoning:** Office, Residential, or Institutional
 - ◇ **Drive Distance:**
 - ±19.6 miles to I-26 Access
 - ±28.4 miles to I-85 Access
 - ±38.4 miles to I-77 Access
 - ±43.5 miles to GSP Int'l Airport
 - ±76.0 miles to CLT Int'l Airport
 - ◇ **Parking:** 246 Spaces
 - ◇ **Sewer:** City of Union
 - ◇ **Water:** City of Union
 - ◇ **Power:** City of Union
 - ◇ **Gas:** City of Union
 - ◇ **Telecommunications:** AT&T/ Spectrum



Total Square Feet: ±127,000SF



**UNION COUNTY
DEVELOPMENT BOARD**

Gilbert B. Bradham, Jr. | SVN Senior Advisor



OFFICE | 803.325.1000

CELL | 843.532.1641

in | @gilbradhamjr29487

✉ | gilbert.bradham@svn.com

🌐 | www.svn-scre.com

116 E. Main Street, Suite 201 | Rock Hill, SC 29730

no guarantee, warranty or representation about its
present or future performance of the property.
your satisfaction the suitability of the property

Union Medical Center
322 W South Street
Union County, South Carolina 29379



Square Footage Breakdown

Department	Ground Floor	1st Floor	2nd Floor	3rd Floor	Basement	Total By Department
Access Health	416					416
Accounting	475					475
Administration	1459		2578 Vacant			4037
Admissions	2095					2095
Biomedical Engineering			749			749
Business Office / Med Records	1779					1779
Cardiopulmonary Services	233	1924	320			2897
Case Management		1496				1496
Dietary	6469	158				6627
Education			700			700
Emergency Department	3699					3699
Employee Health/Wellness	1408	2149	157 Vacant			3714
EMS			90			90
Engineering (office space)					841	841
EVS	4617					4617
Heart Failure Clinic	420					420
Home Health (SRHS)	65					65
Human Resources	371	50				421
Infection Control			258			258
Information Services	1416	979	1180	170		3745
Laboratory	3632					3632
Classroom - Gmd/Quality office-2nd	695		228			923
Materials Management	2202					2202
Med Surg				15026		15026
Nursing	376	12295				12671
Occ Therapy / Spch Therapy		151				151
Pharmacy			1632			1632
Physical Therapy			491			491
Physicians	161 Vacant		1204			1365
Quality / Risk Management			946			946
Radiology	7174					7174
Security	159					159
Special Procedures Unit (RT Storage)	354					354
Volunteers (Front Desk)	60					60
VACANT						
"Shell Space"	1863	--	--	--	--	1863
Chapel	169	--	--	--	--	169
Elevators	365	365	240	240	232	1442
Engineering: Boiler / Chiller / Storage	--	--	--	--	16177	16177
Courtyard - an "outside" space	1755					1755
Common areas (restrooms / stairwell / hallways / machine rooms)	2123	10708	5958	1295		20084
Total Square Footage by Floor-UMC	46010	30275	16731	16731	17250	126997



**UNION COUNTY
DEVELOPMENT BOARD**

Gilbert B. Bradham, Jr. | SVN Senior Advisor



OFFICE | 803.325.1000

CELL | 843.532.1641

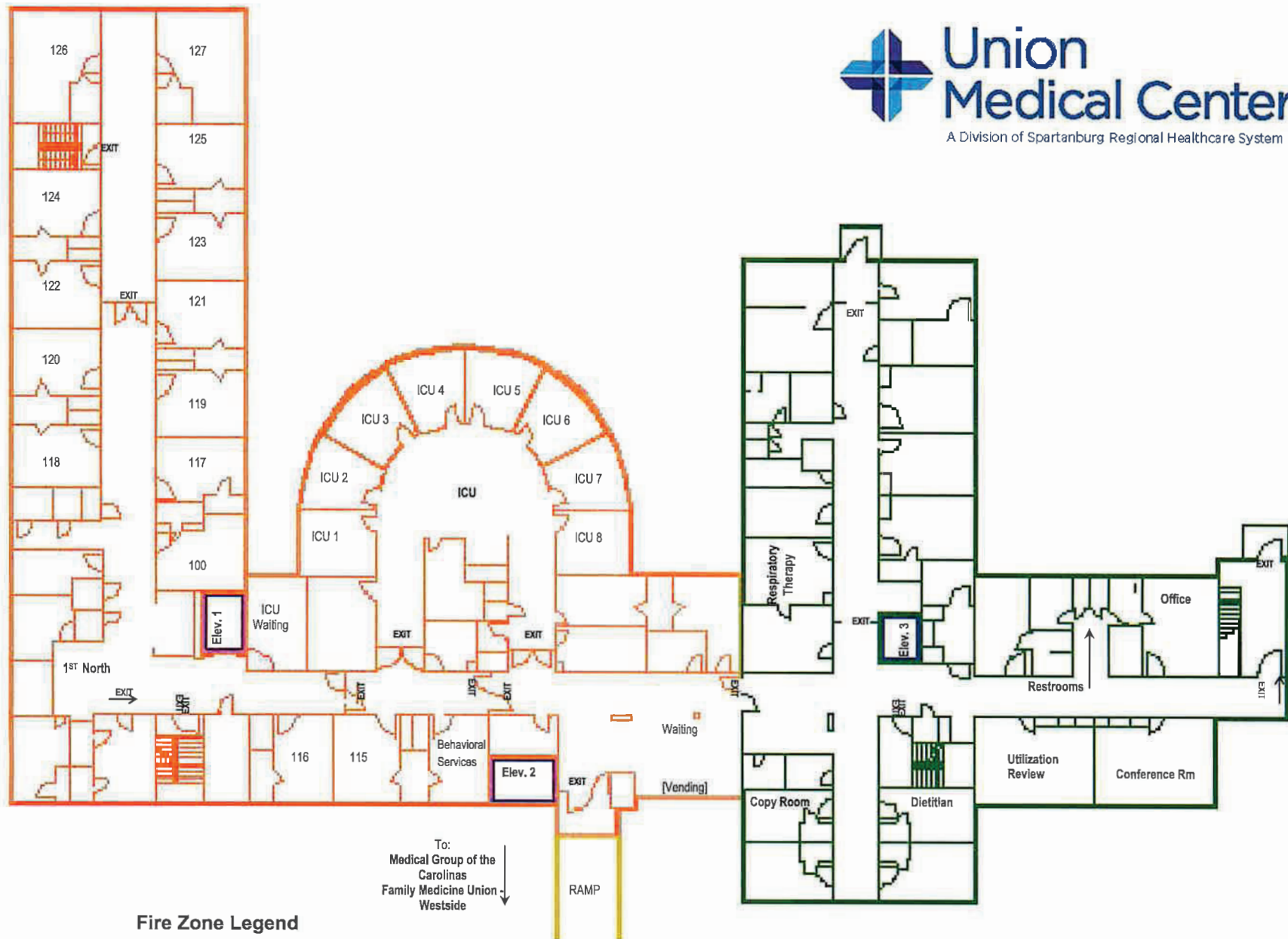
in @gilbradhamjr29487

✉ gilbert.bradham@svn.com

www.svn-scre.com

116 E. Main Street, Suite 201 | Rock Hill, SC 29730

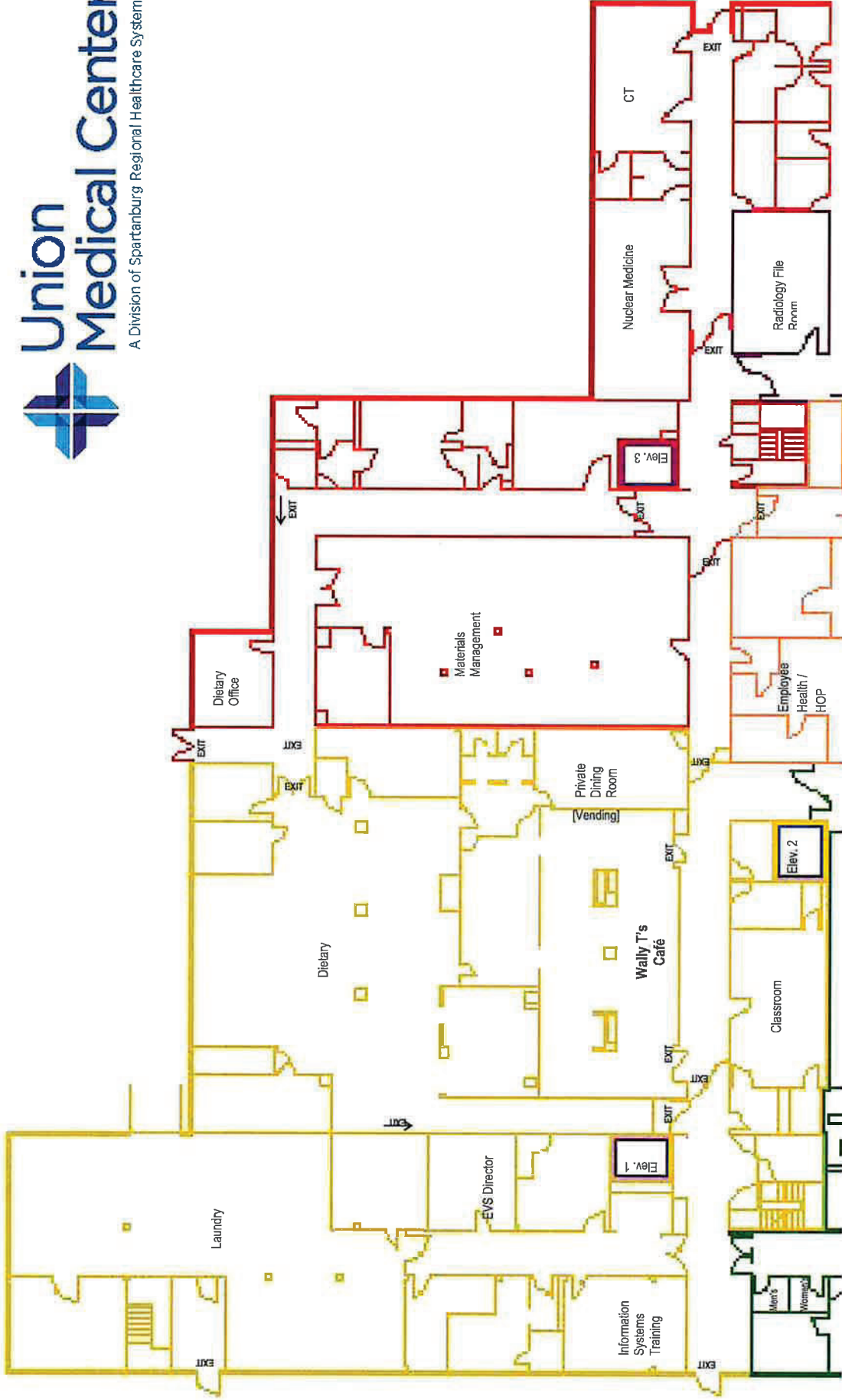
presentation about it
 use of the property.
 liability of the property



Fire Zone Legend

- | | |
|-----------------------------------------|-----------------------------------------|
| ■ A | ■ E |
| ■ B | ■ F |
| ■ C | ■ G |
| ■ D | |

**1st Floor East
Evacuation Plan**



**Ground Floor East
Evacuation Plan**

Fire Zone Legend

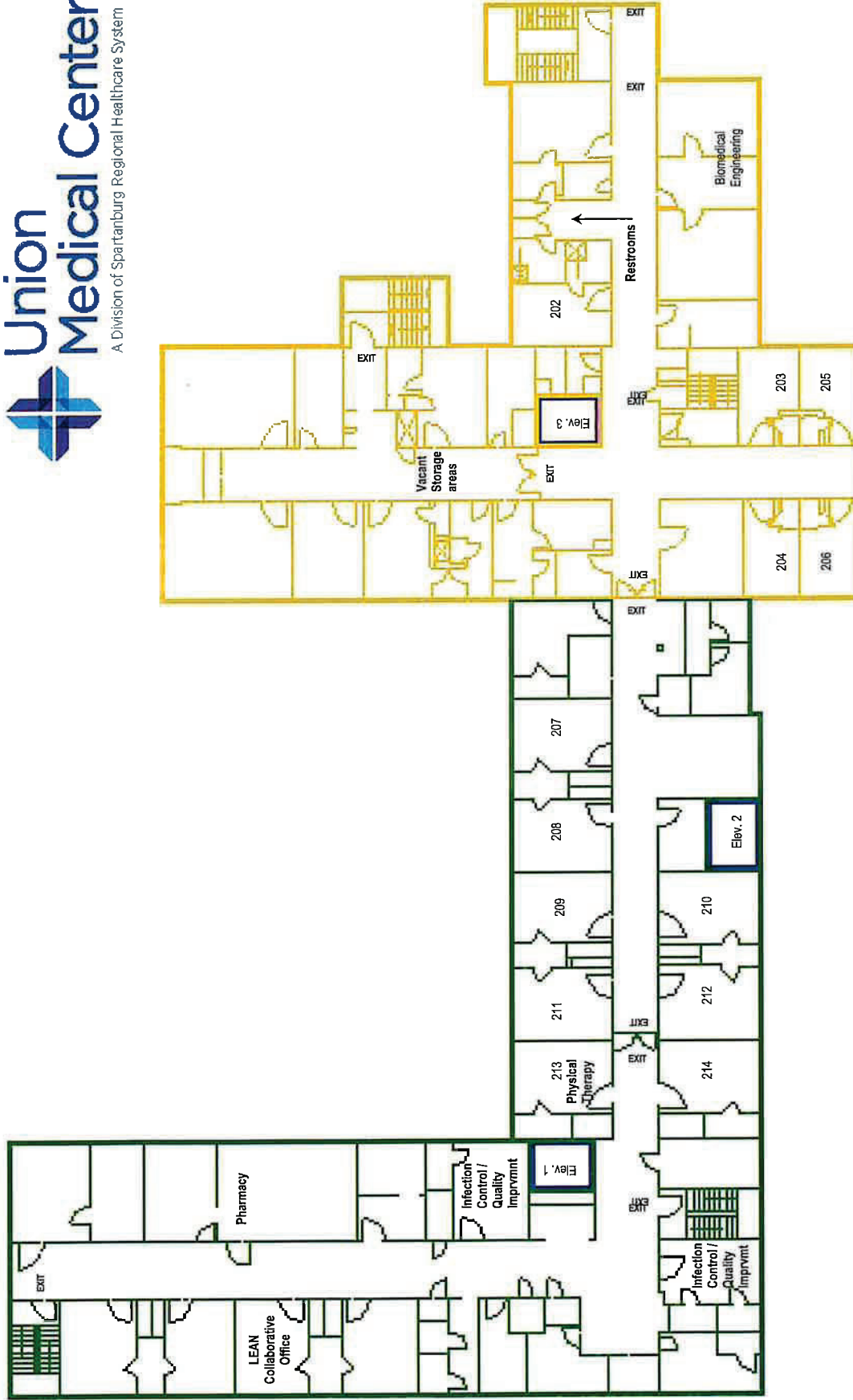
 A	 B	 C	 D	 E	 F	 G
-------------------------------------------------------------------------------------------------------------------------------------	------------------------------------------------------------------------------------------------------------------------------------	-------------------------------------------------------------------------------------------------------------------------------------	-----------------------------------------------------------------------------------------------------------------------------------	-------------------------------------------------------------------------------------------------------------------------------------	----------------------------------------------------------------------------------------------------------------------------------	-----------------------------------------------------------------------------------------------------------------------------------



Fire Zone Legend

■ A	■ E	■ F	■ G
■ B	■ D		

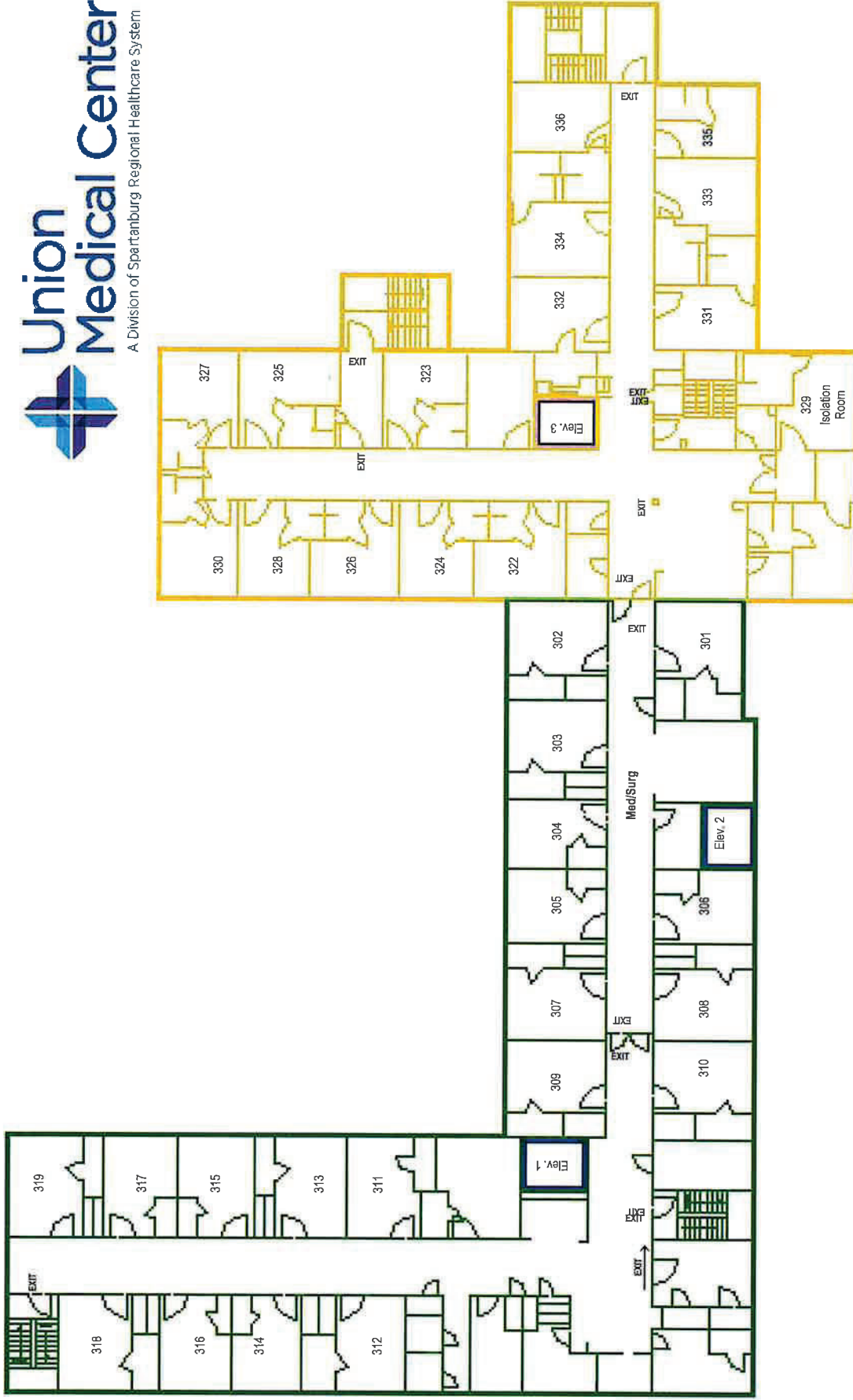
Ground Floor West Evacuation Plan



Fire Zone Legend

 A	 E
 B	 F
 C	 G
 D	

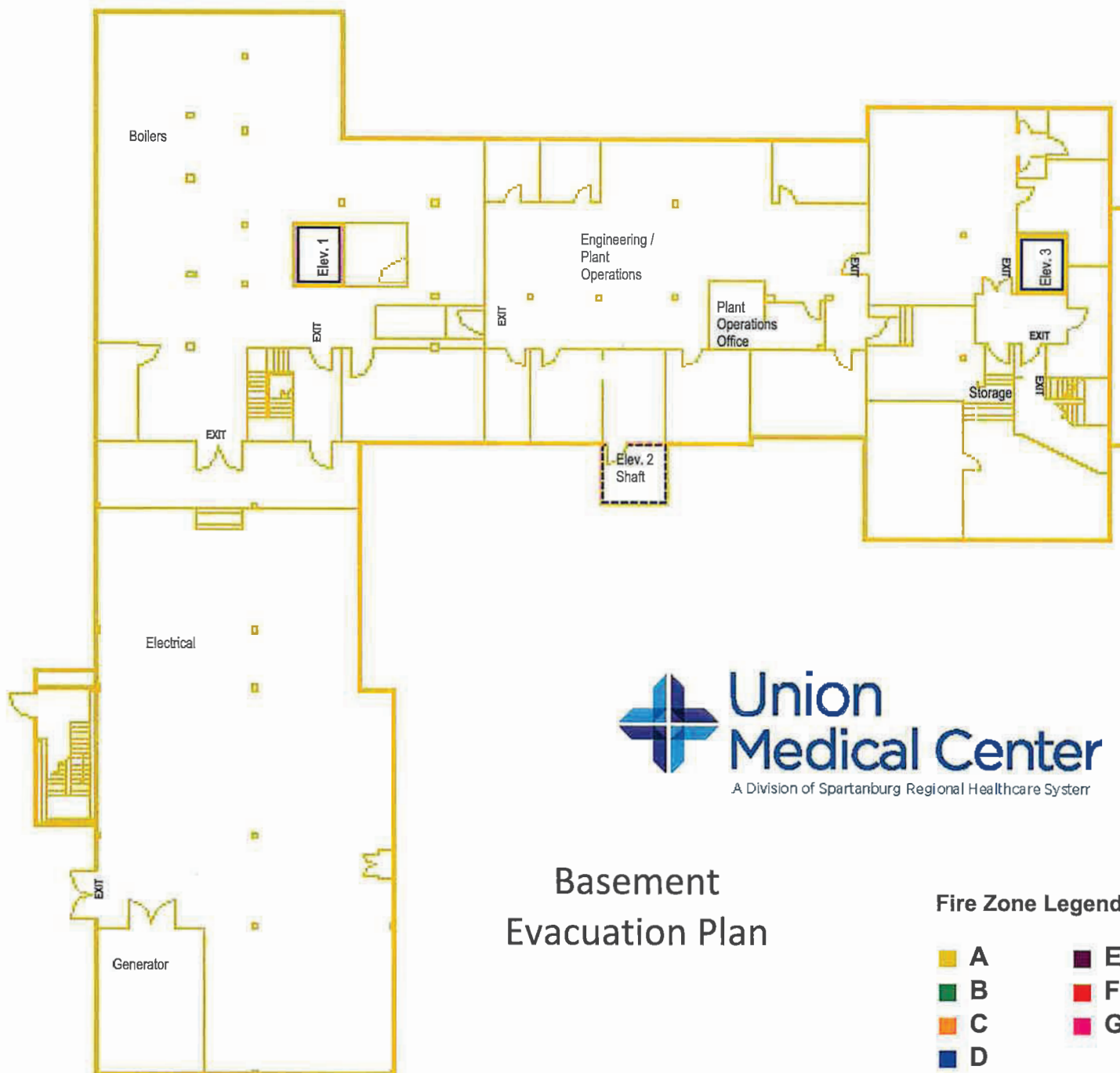
**2nd Floor
Evacuation Plan**



Fire Zone Legend

- | | | | |
|---------------------------------------------------------------------------------------|----------|---------------------------------------------------------------------------------------|----------|
|  | A |  | E |
|  | B |  | F |
|  | C |  | G |
|  | D | | |

**3rd Floor
Evacuation Plan**



Basement Evacuation Plan

Fire Zone Legend

A	E
B	F
C	G
D	