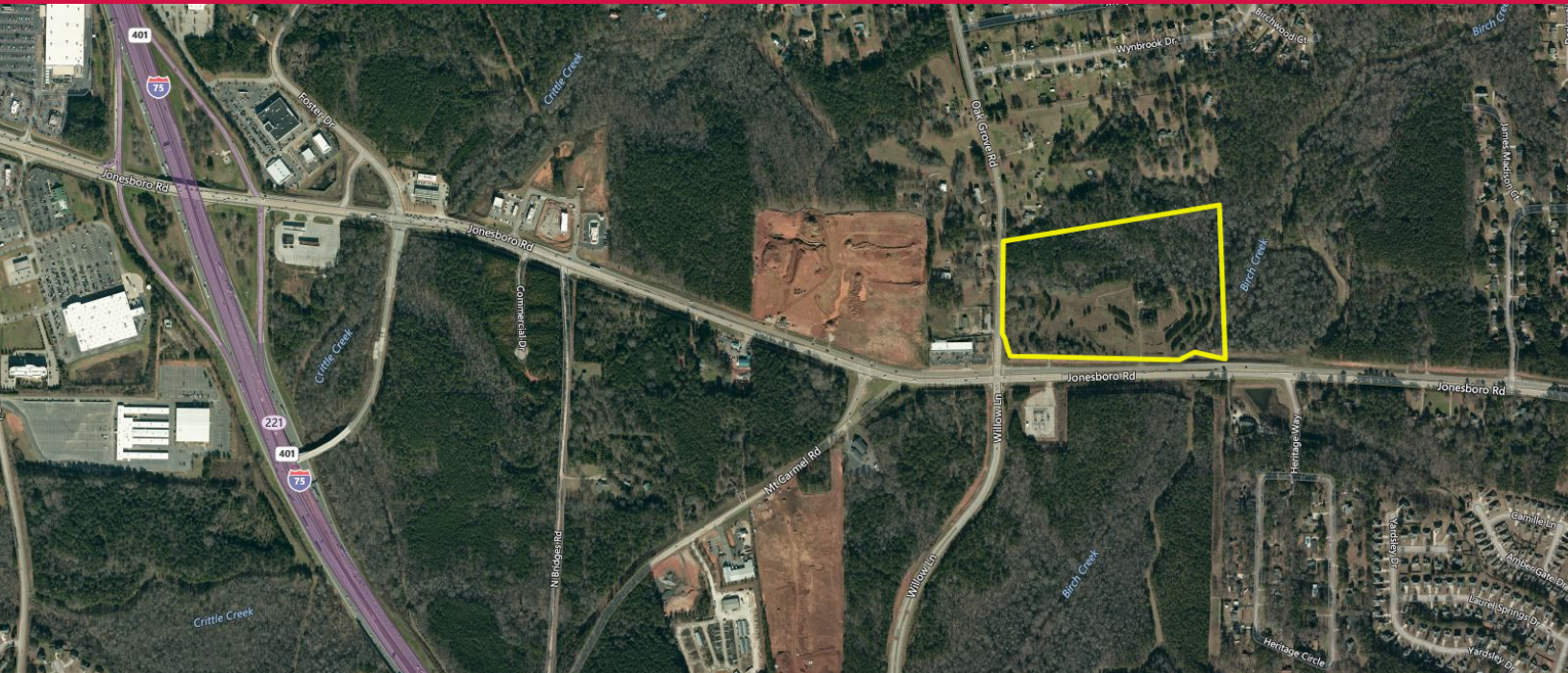


# LAND FOR SALE

## 30.33+/- Acres Available

**KING** Industrial  
Realty, Inc.



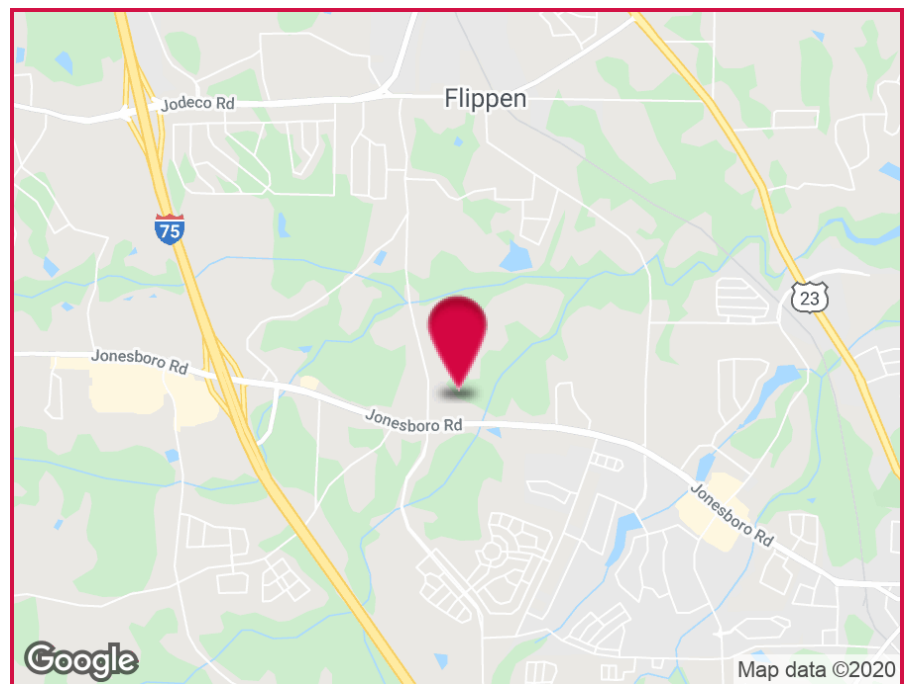
## 982 Jonesboro Road, McDonough, GA 30253

### OFFERING SUMMARY

Lot Size: 30.33 Acres  
Zoning: RA

### PROPERTY HIGHLIGHTS

- 1 Mile from I-75 via Jonesboro Road
- All Utilities Available to Site
- Walk to New GRTA Park-N-Ride to be Delivered in Late 2020
- 29,100+/- Cars Per Day
- Potential Rezone Opportunity to Mixed Use
- Over 1,400+/- Feet of Road Frontage on Jonesboro Road
- Located at the Lighted Intersection of Jonesboro Road and Oak Grove Road



For More Information Contact:

**BRYAN MARSHBURN**

Associate Broker  
404.942.2044

[bmarshburn@kingindustrial.com](mailto:bmarshburn@kingindustrial.com)

**RYAN CLARK**

Sales Associate  
404.942.2037

[rclark@kingindustrial.com](mailto:rclark@kingindustrial.com)

# LAND FOR SALE

## 30.33+/- Acres Available

### 982 Jonesboro Road, McDonough, GA 30253

**KING** Industrial  
Realty, Inc.



For More Information Contact:

**BRYAN MARSHBURN**

Associate Broker

404.942.2044

[bmarshburn@kingindustrial.com](mailto:bmarshburn@kingindustrial.com)

**RYAN CLARK**

Sales Associate

404.942.2037

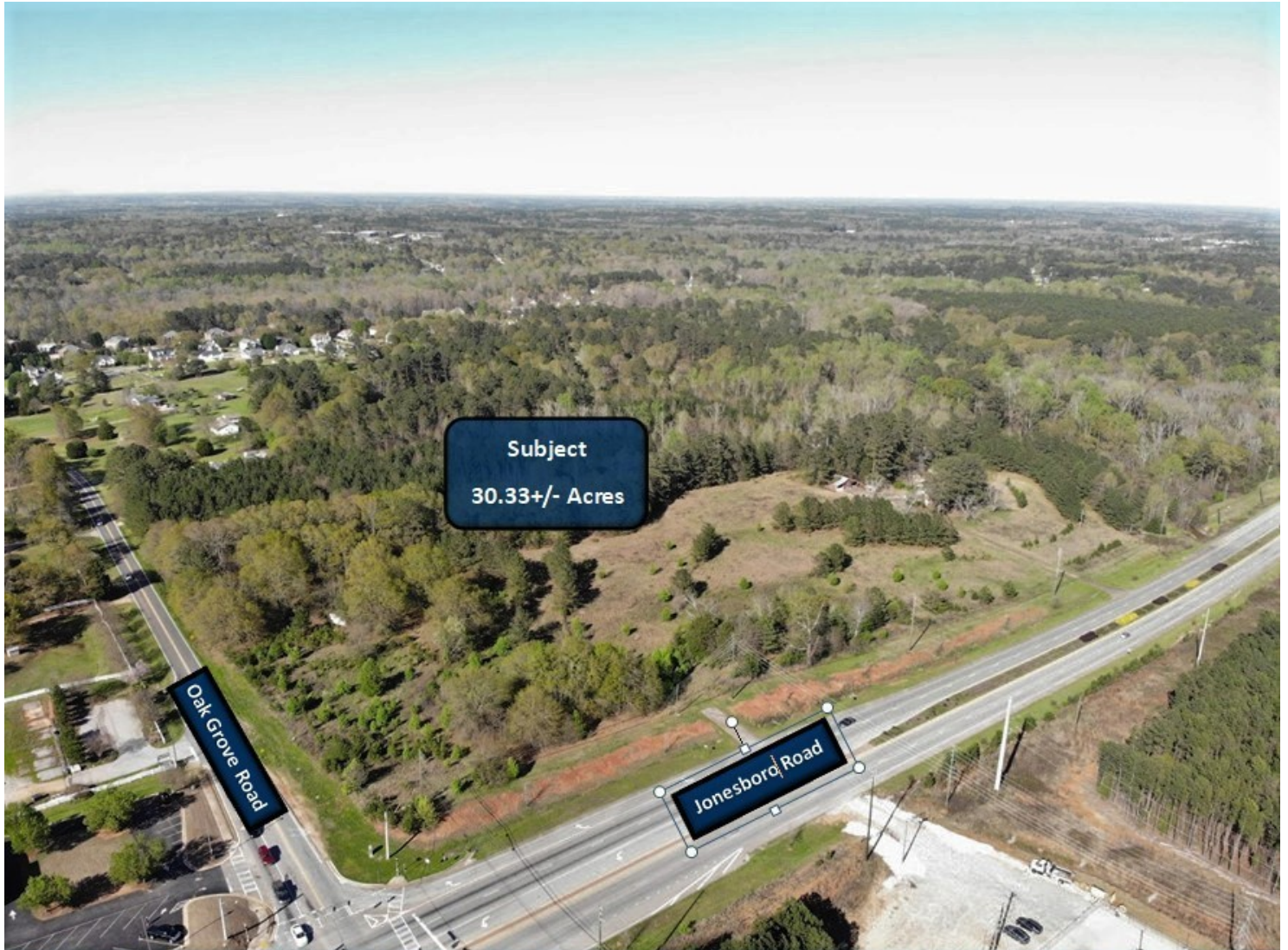
[rclark@kingindustrial.com](mailto:rclark@kingindustrial.com)

# LAND FOR SALE

## 30.33+/- Acres Available

982 Jonesboro Road, McDonough, GA 30253

**KING** Industrial  
Realty, Inc.



For More Information Contact:

**BRYAN MARSHBURN**

Associate Broker

404.942.2044

bmarshburn@kingindustrial.com

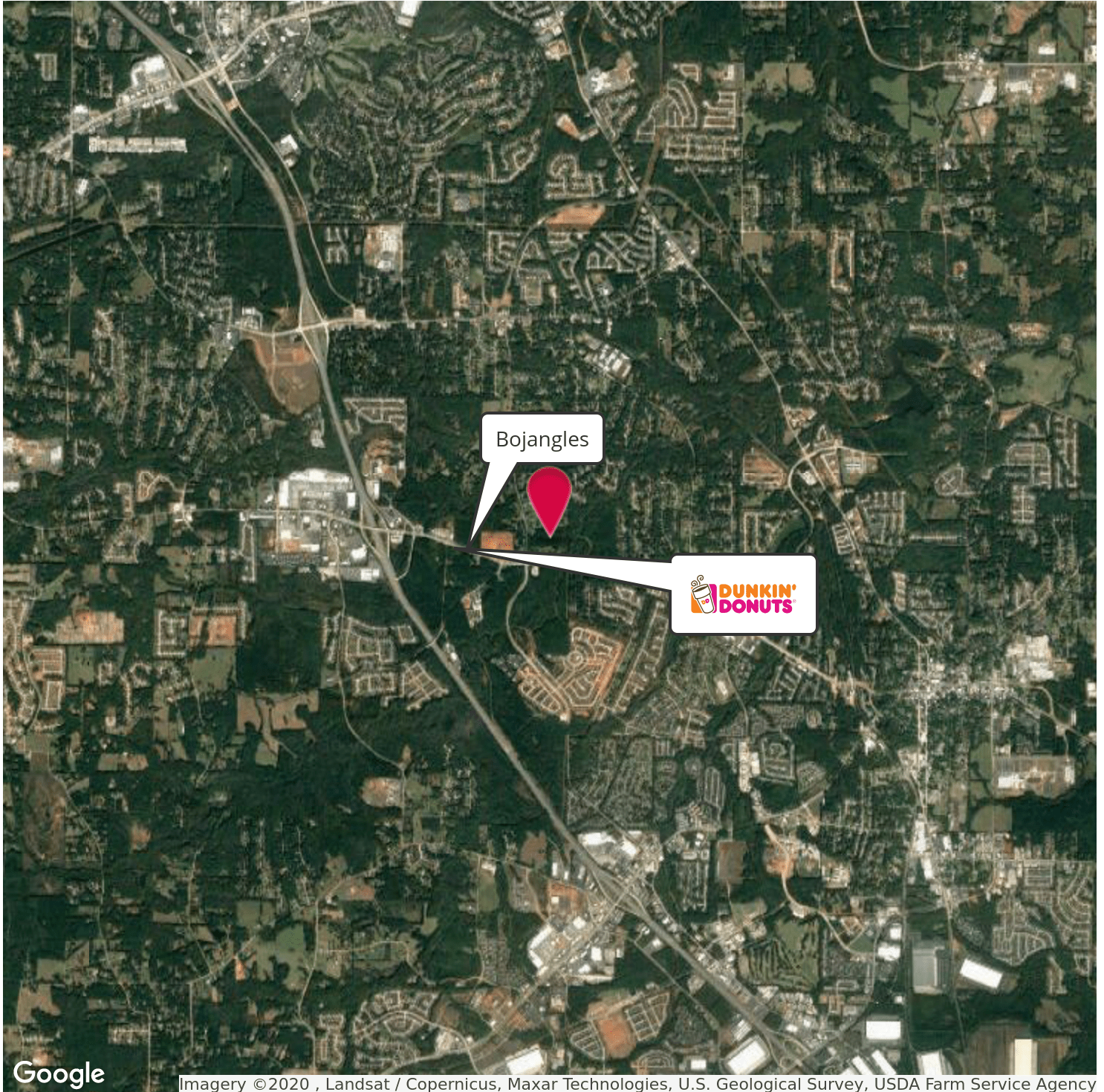
**RYAN CLARK**

Sales Associate

404.942.2037

rclark@kingindustrial.com

**LAND FOR SALE**  
**30.33 Acres Available**  
982 Jonesboro Road, McDonough, GA 30253



Google

Imagery ©2020 , Landsat / Copernicus, Maxar Technologies, U.S. Geological Survey, USDA Farm Service Agency  
For More Information Contact:

**BRYAN MARSHBURN**

Associate Broker  
404.942.2044

[bmarshburn@kingindustrial.com](mailto:bmarshburn@kingindustrial.com)

**RYAN CLARK**

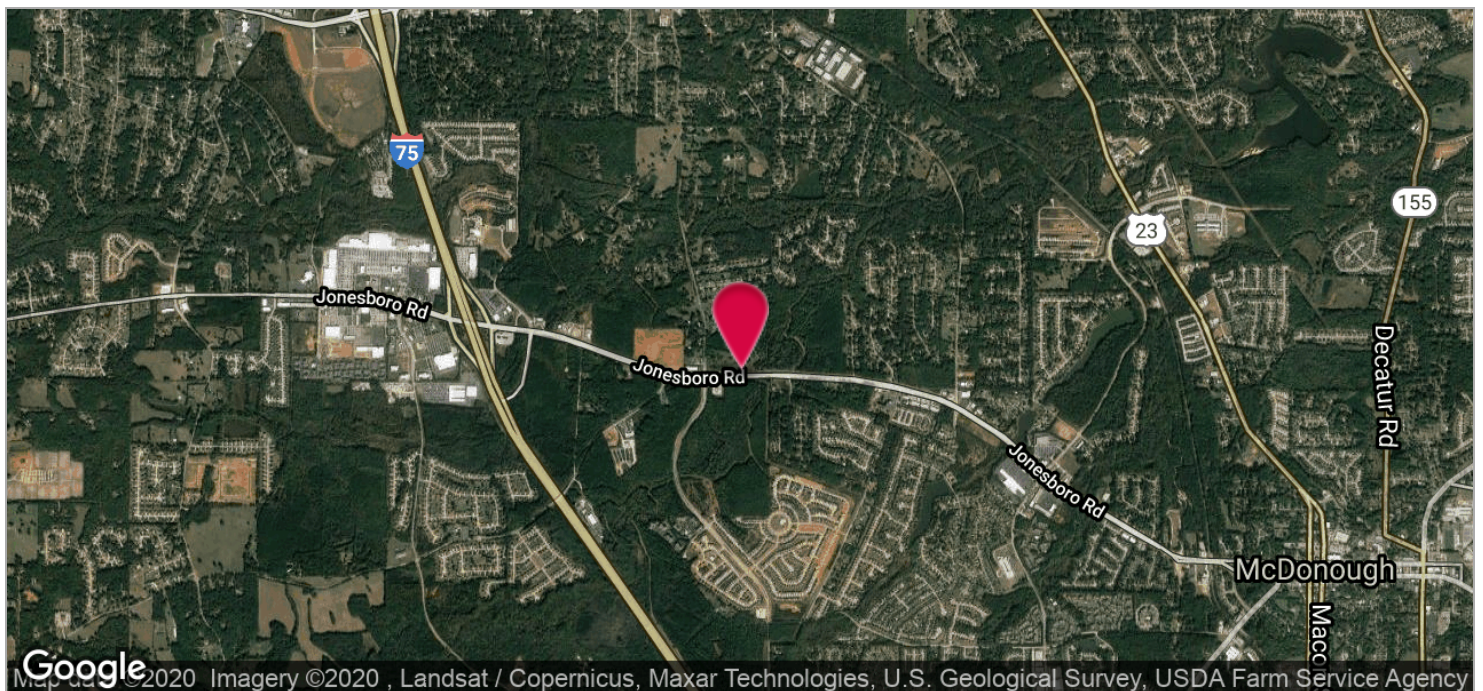
Sales Associate  
404.942.2037

[rclark@kingindustrial.com](mailto:rclark@kingindustrial.com)

# LAND FOR SALE

## 30.33+/- Acres Available

### 982 Jonesboro Road, McDonough, GA 30253



For More Information Contact:

**BRYAN MARSHBURN**

Associate Broker

404.942.2044

[bmarshburn@kingindustrial.com](mailto:bmarshburn@kingindustrial.com)

**RYAN CLARK**

Sales Associate

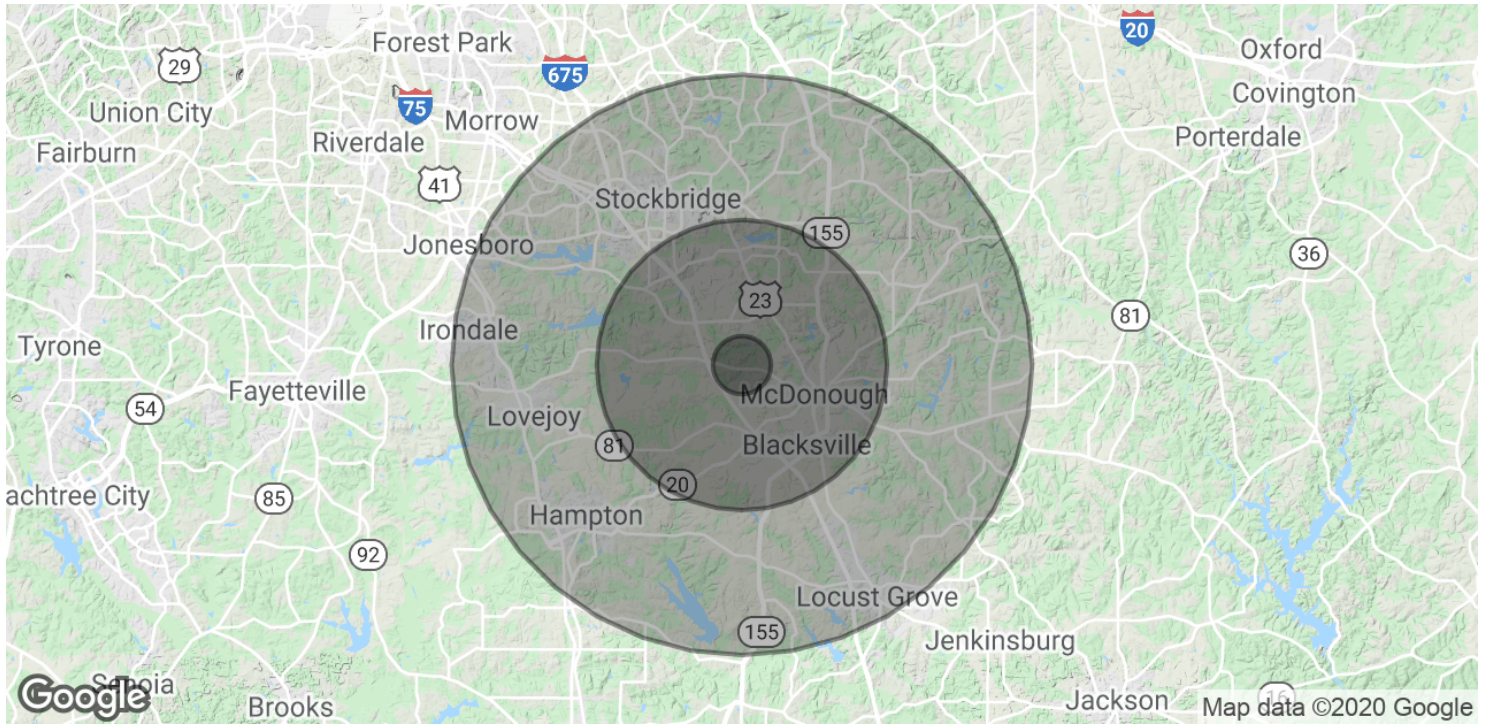
404.942.2037

[rclark@kingindustrial.com](mailto:rclark@kingindustrial.com)

# LAND FOR SALE

## 30.33+/- Acres Available

982 Jonesboro Road, McDonough, GA 30253



### POPULATION

	1 MILE	5 MILES	10 MILES
Total Population	5,063	72,249	213,777
Average age	31.2	34.0	34.8
Average age (Male)	28.2	32.8	33.9
Average age (Female)	33.3	34.8	35.6

### HOUSEHOLDS & INCOME

	1 MILE	5 MILES	10 MILES
Total households	1,847	25,541	73,997
# of persons per HH	2.7	2.8	2.9
Average HH income	\$56,265	\$73,565	\$73,262
Average house value	\$180,337	\$219,092	\$204,577

\* Demographic data derived from 2010 US Census

For More Information Contact:

**BRYAN MARSHBURN**

Associate Broker

404.942.2044

bmarshburn@kingindustrial.com

**RYAN CLARK**

Sales Associate

404.942.2037

rclark@kingindustrial.com