



Property highlights

- Ground floor suite containing approximately 3,500 sf. Perfect for medical use
- Second floor suites containing approximately 900 sf office/storage space each. The two suites can be combined for a total of 1,800 sf. Each space is conditioned with one ADA compliant restroom. However, the space is accessible only by a stairwell, so overall the additional space is not ADA compliant. Floor plan below. Separate entrance in the rear of the building



Great medical or office space for lease



Excellent signage opportunity



Parking 5/1000

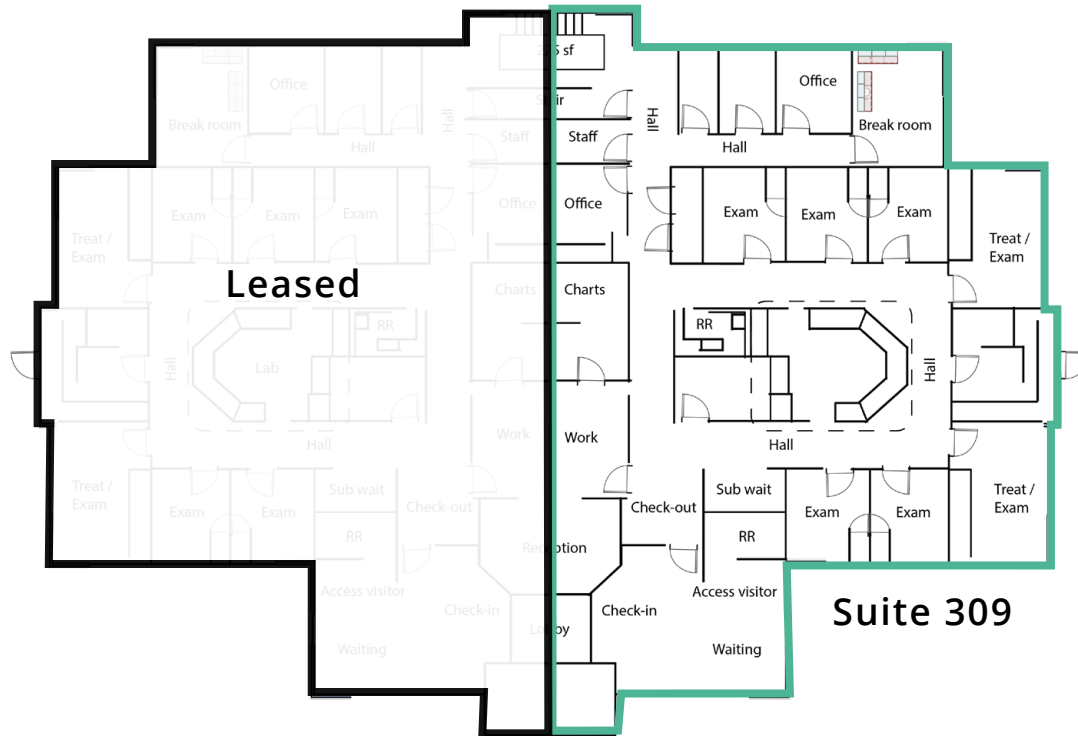


Suite 309: Available April 1, 2024

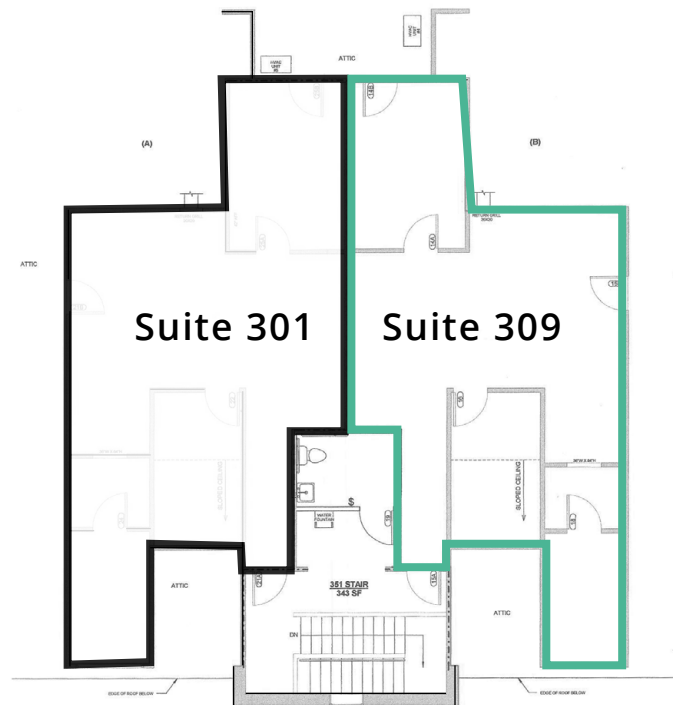
Medical office space for lease

309 Quecreek Circle

Ground floor:



Second floor:



Suzanne Ganser
Vice President
D 615 727 0016
suzanne.ganser@avisonyoung.com



1. Whitt's Barbecue
2. King Chef
3. Fat Mo's Burgers
4. Two Brothers Pizzeria & Restaurant

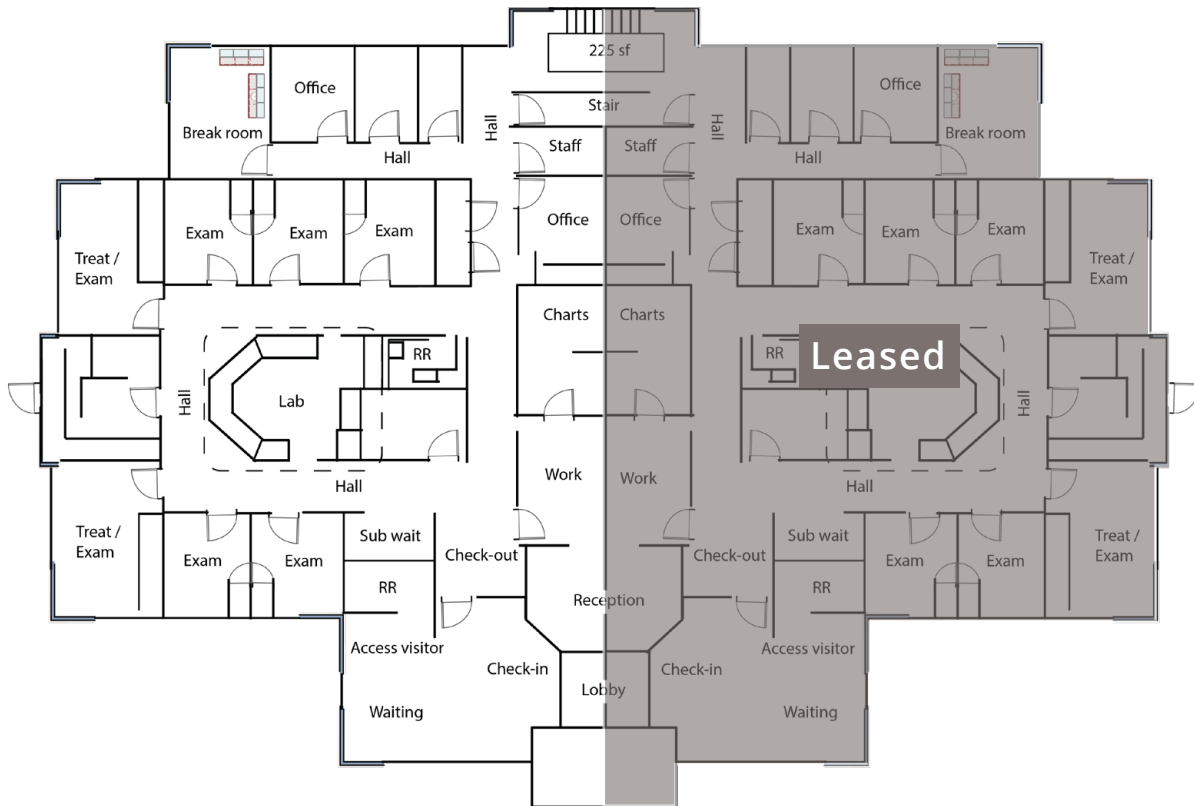
5. Panadería Salvadoreña el Sinaí
6. Karen Thai & Sushi Restaurant
6. Gyro Cafe



Suzanne Ganser
Vice President
D 615 727 0016
suzanne.ganser@avisonyoung.com

Medical office space for lease

309 Quecreek Circle



Suzanne Ganser
Vice President
D 615 727 0016
suzanne.ganser@avisonyoung.com

Medical office space for lease

309 Quecreek Circle



Suzanne Ganser
Vice President
D 615 727 0016
suzanne.ganser@avisonyoung.com