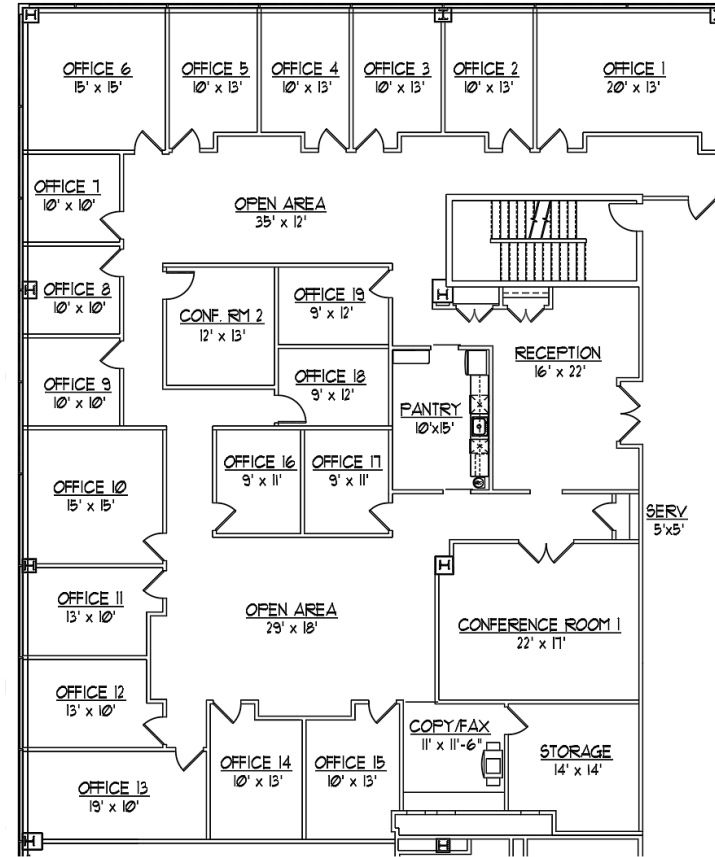
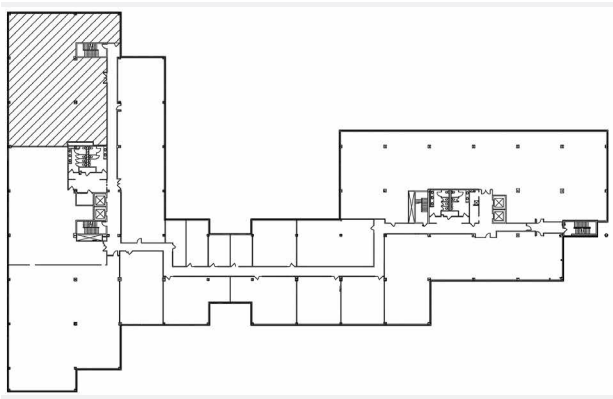


Court Plaza South

2nd Floor // 7,498 RSF

21 Main Street
Hackensack, NJ 07601



Scan the QR Code For More Information or Visit: www.sanzari.com/courtplaza

CONTACT:

Jonathan Kristofich
201.488.5800 ext. 103
jkristofich@naihanson.com

Andrew Somple, SIOR
201.488.5800 ext. 151
asomple@naihanson.com

Jessica Curry
201.488.5800 ext. 199
jcurry@naihanson.com

NAI James E. Hanson
COMMERCIAL REAL ESTATE SERVICES, WORLDWIDE

ALFRED
SANZARI SINCE 1945
ENTERPRISES

FOLLOW US! | NJ Offices: Teterboro | Parsippany | naihanson.com | Member of NAI Global with 300 Offices Worldwide

THE INFORMATION CONTAINED HEREIN HAS BEEN OBTAINED FROM SOURCES CONSIDERED TO BE RELIABLE, BUT NO GUARANTEE OF ITS ACCURACY IS MADE BY NAI JAMES E. HANSON.