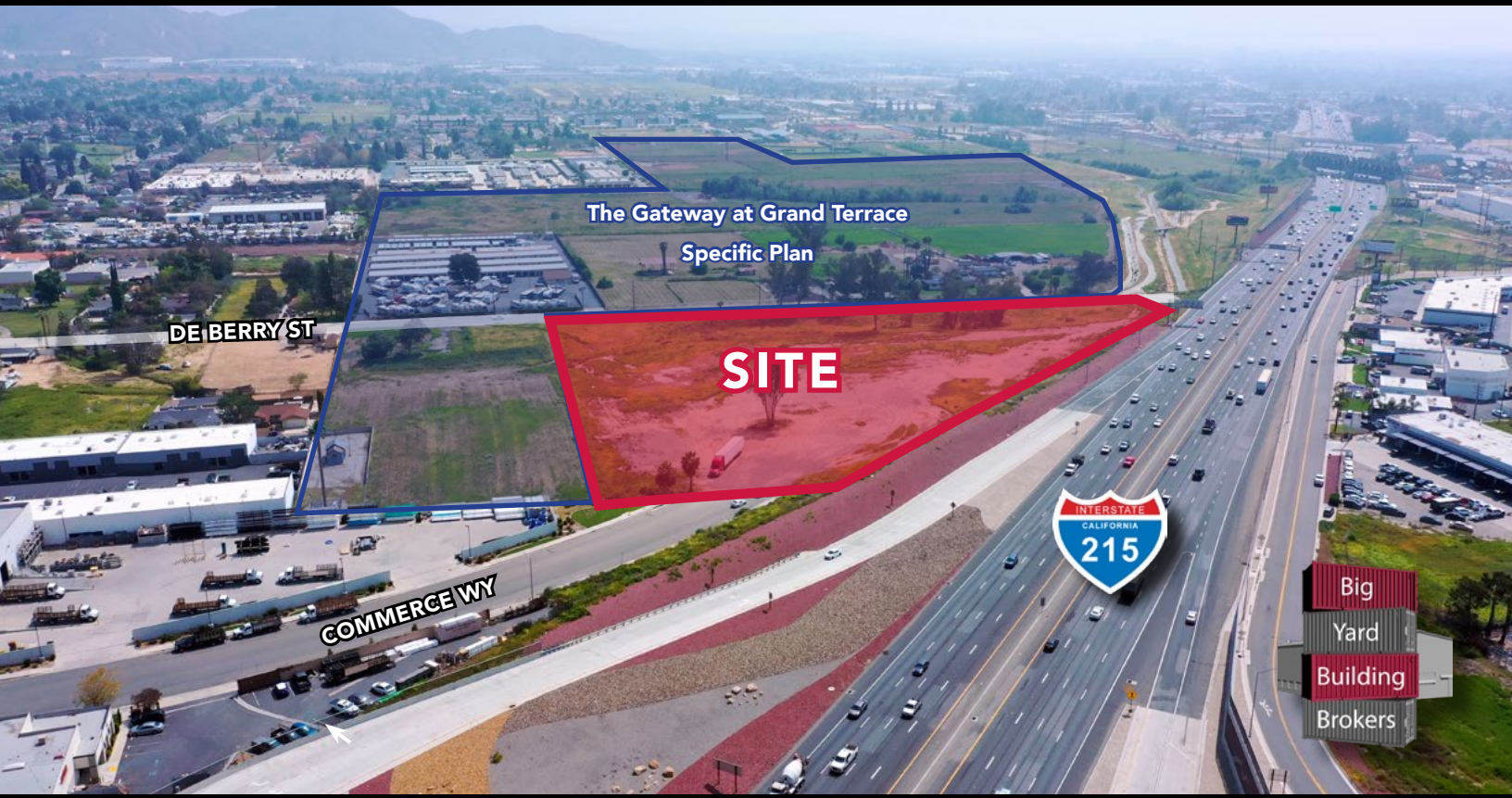


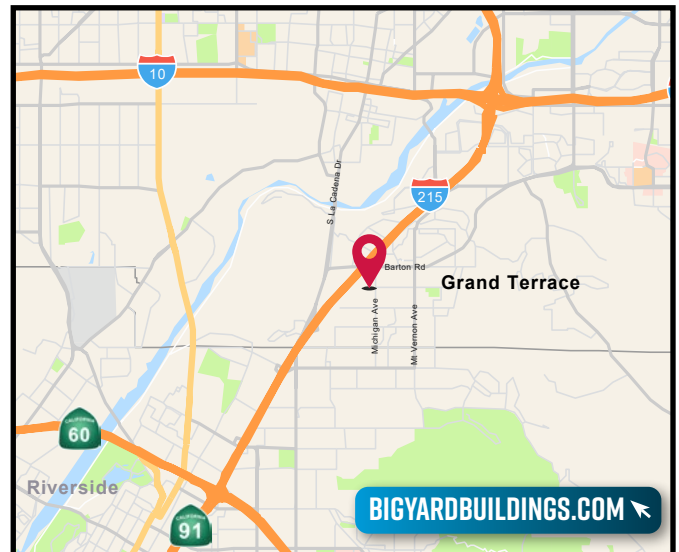
# FOR SALE: ±6.26 ACRE FREEWAY FRONTAGE PROPERTY

De Berry Street, Grand Terrace, CA 92324



## PROPERTY HIGHLIGHTS

- ±6.26 Acre property
- APN's: 1167-151-79, 1167-161-33 & 1167-161-02
- Immediate access to 215 freeway
- Adjacent to The Gateway at Grand Terrace Specific Plan a ±55 acre mixed use development with Lewis Homes which will include ±700 apartments
- The city will consider electronic billboard



**CRAIG YOCUM**

951.276.3625 // DRE#: 00942165  
CYOCUM@LEERIVERSIDE.COM

**ALEXEY ZABOLOTSKIKH**

951.276.3606 // DRE#: 01428540  
ALEX@LEERIVERSIDE.COM

**TRENT KIMSEY**

951.276.3649 // DRE#: 02066678  
TKIMSEY@LEERIVERSIDE.COM

FOLLOW US: BIG YARD BUILDING BROKERS @BIGYARDBUILDINGBROKERS BIG YARD BUILDINGS

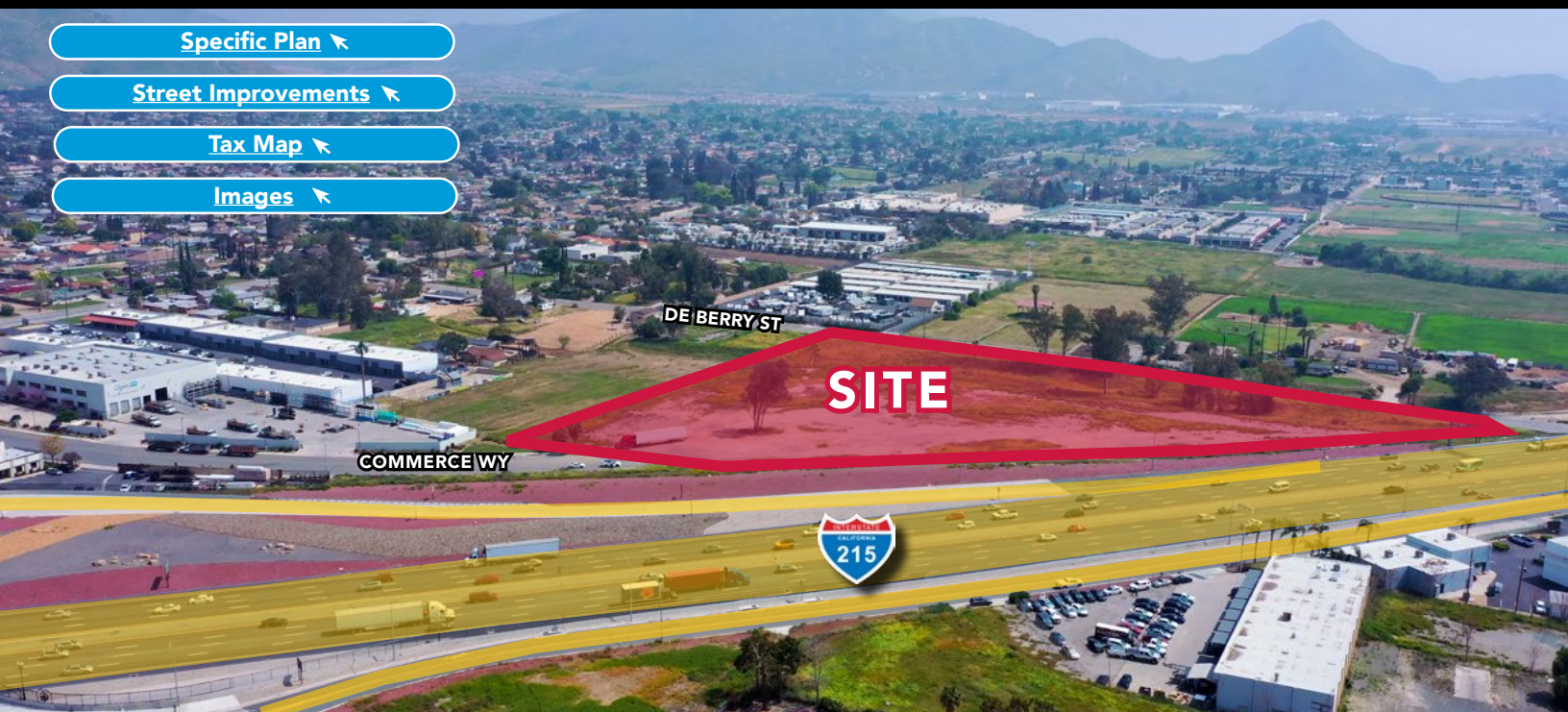
3240 Mission Inn Avenue, Riverside, CA 92507 | 951.276.3600 | Corporate DRE#: 01048055 | www.lee-associates.com

No warranty or representation has been made to the accuracy of the foregoing information. Terms of sale or lease and availability are subject to change or withdrawal without notice. Lee & Associates Commercial Real Estate Services, Inc. - Riverside.



# FOR SALE: ±6.26 ACRE FREEWAY FRONTAGE PROPERTY

De Berry Street, Grand Terrace, CA 92324



**LEE & ASSOCIATES**  
COMMERCIAL REAL ESTATE SERVICES

**CRAIG YOCUM**  
951.276.3625 // DRE#: 00942165  
CYOCUM@LEERIVERSIDE.COM

**ALEXEY ZABOLOTSKIKH**  
951.276.3606 // DRE#: 01428540  
ALEX@LEERIVERSIDE.COM

**TRENT KIMSEY**  
951.276.3649 // DRE#: 02066678  
TKIMSEY@LEERIVERSIDE.COM

FOLLOW US: BIG YARD BUILDING BROKERS @BIGYARDBUILDINGBROKERS BIG YARD BUILDINGS