

**INCENTIVE
PROGRAM**

**HALF OFF RENT
FOR THE FIRST
YEAR!**

NAI Farbman
Commercial Real Estate Services, Worldwide.

MACABEES

25900
Northwestern Hwy
Southfield, MI

Brad Margolis | bmargolis@farbman.com | 248.787.0795
Rick Ax | ax@farbman.com | 248.842.0314



Property Highlights

- Beautiful Headquarter Opportunity
- 117,000 Square Feet of Continuous Space
- Located in the Heart of Southfield
- Prestigious Metro Detroit Business District
- Ample Parking with Parking Garage
- Easy Access with Smooth Ingress/Egress
- Grand Entrance with Show Stopping Lobby
- **State of the Art Amenities Including Conference Center, Fitness Center with Private Showers, Cafe with Indoor / Outdoor Seating, Tenant Lounge / Game Room, and Covered Parking Garage**

Building Information

Building Size	117,045 SF
Building Class	A
Number of Floors	4
Average Floor Size	33,000 SF
Year Built	1985

Property Information

Property Type	Office
Property Subtype	Office Building
APN #	24-22-426-001

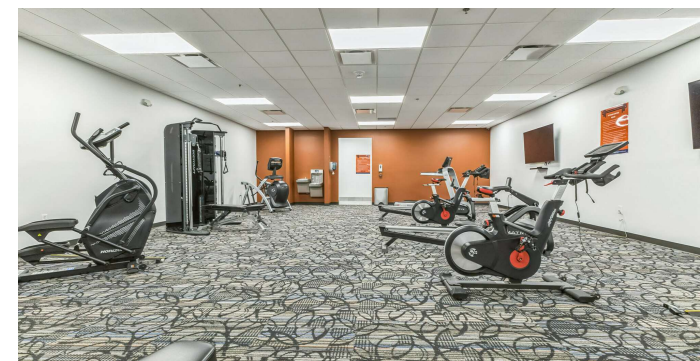
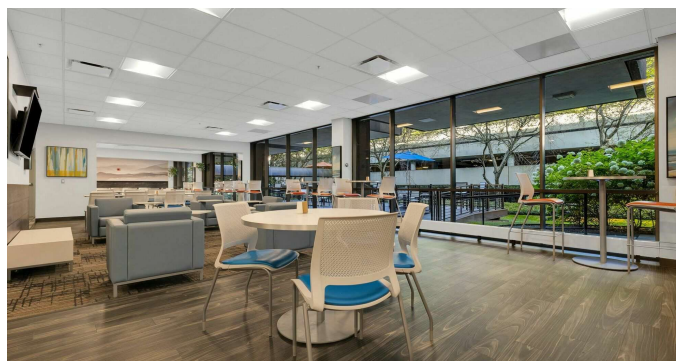
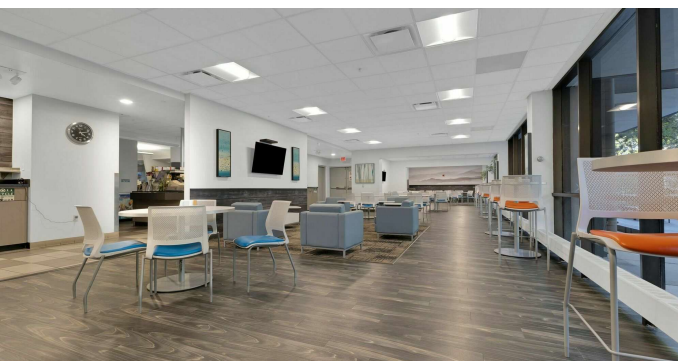
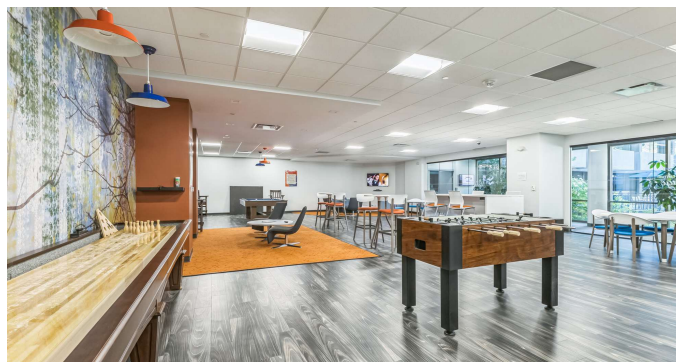
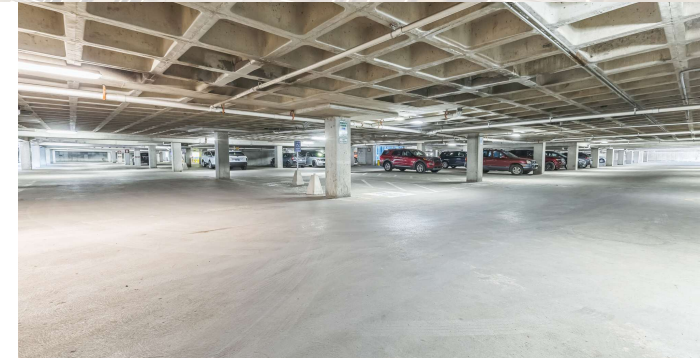
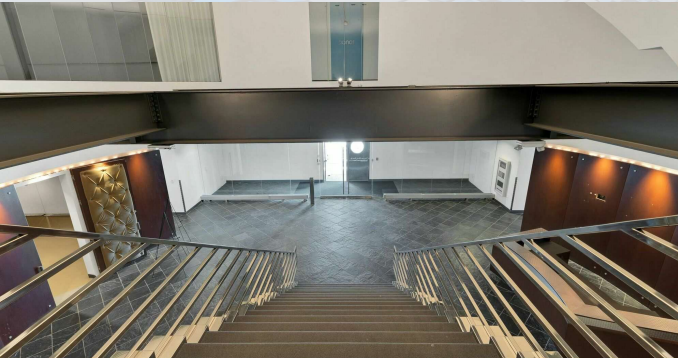


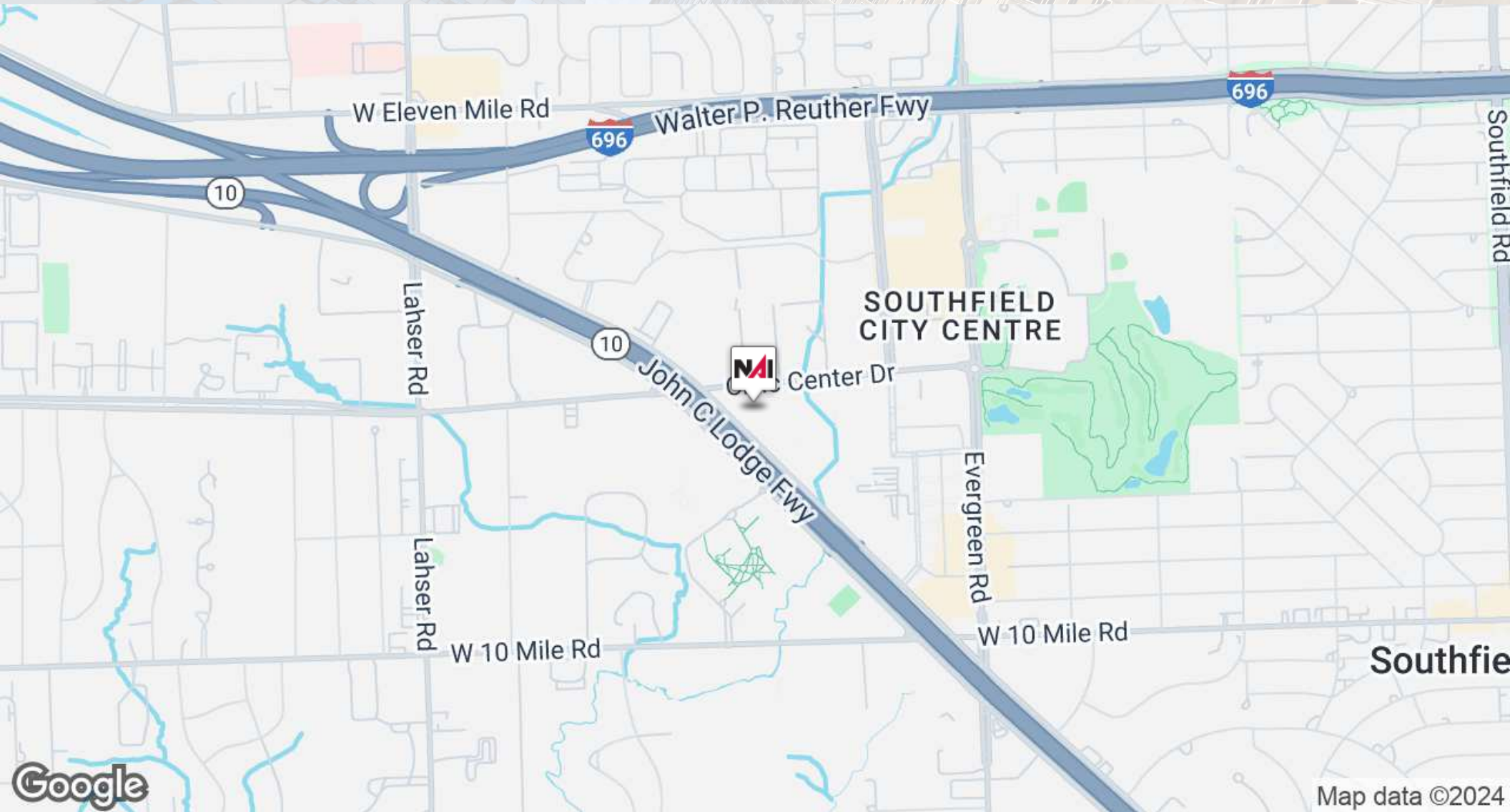
Lease Information

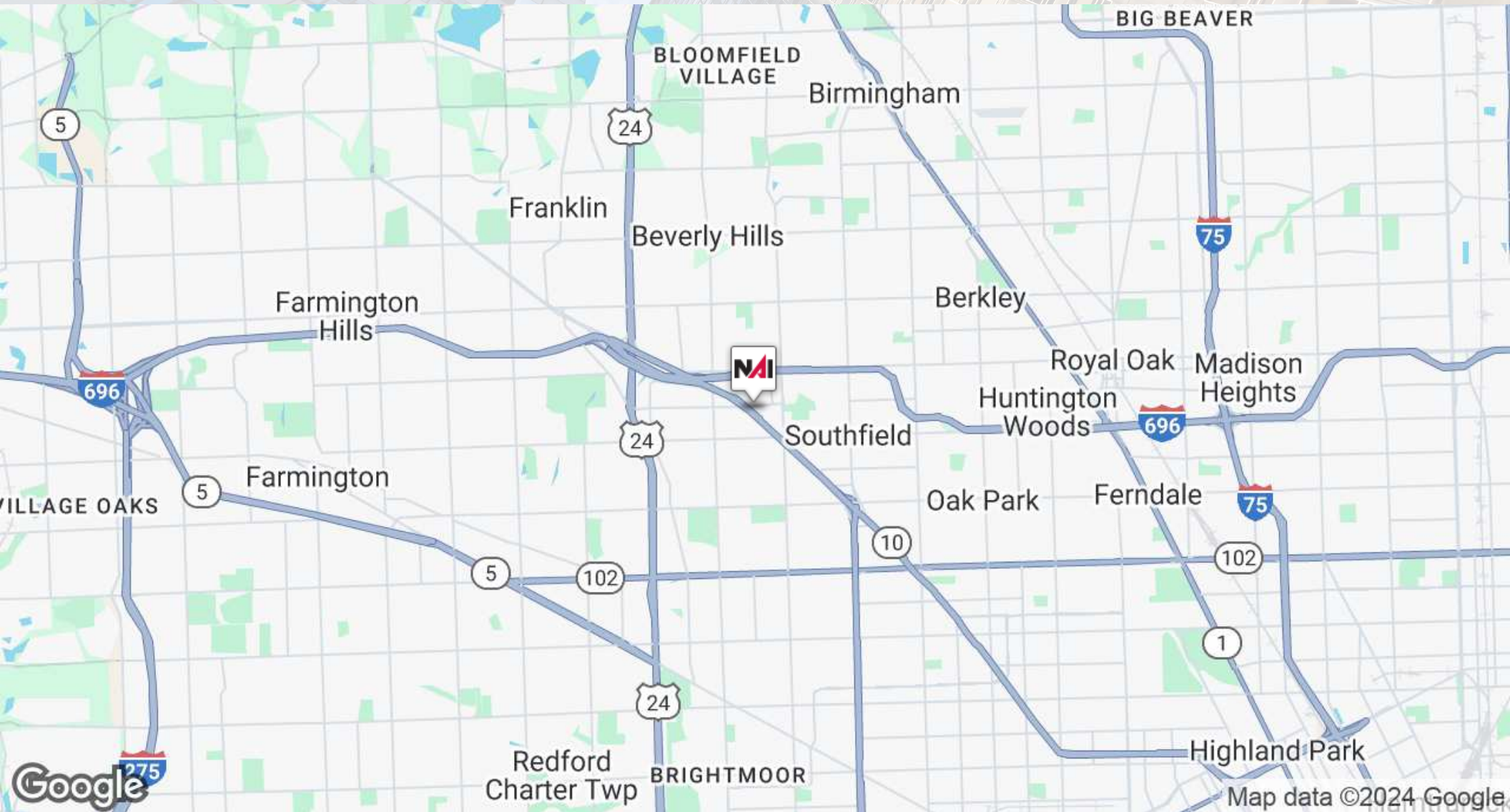
Lease Type:	MG	Lease Term:	120 months
Total Space:	117,045 SF	Lease Rate:	Contact Listing Agent(s)

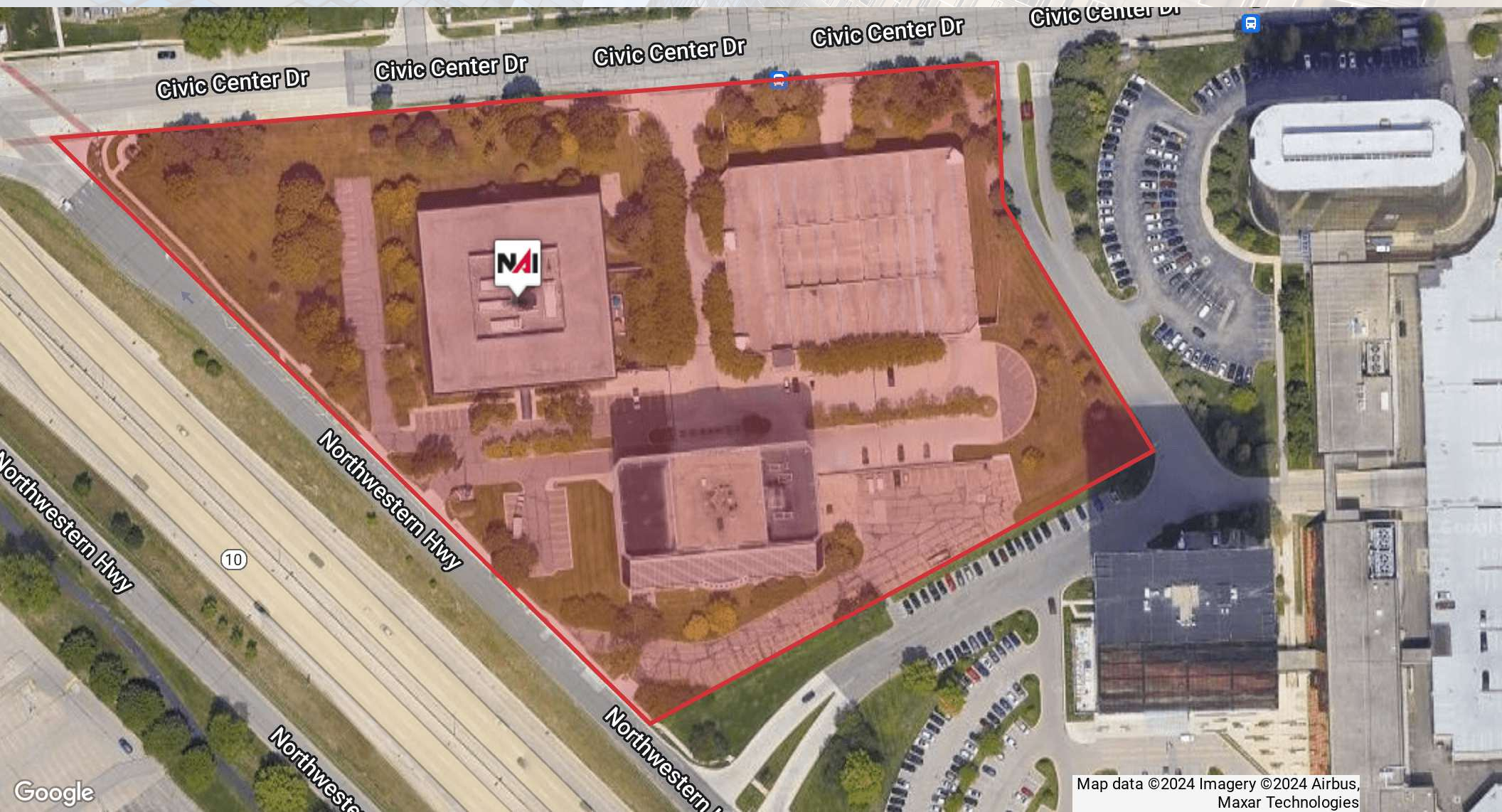
Available Spaces

Suite	Tenant	Size (SF)	Lease Type	Lease Rate
L1 to Floor 3	Available	117,045 SF	Modified Gross	Contact Listing Agent(s)













Brad Margolis

Vice President

Phone: +1 248 351 4367

bmargolis@farbman.com

Rick Ax

Associate Broker

Phone: +1 248 351 6319

Mobile: +1 248 842 0314

ax@farbman.com