



Land

1.91-Acre Land in Alachua

NW 129th Way & Nano Court | Alachua, FL 32615

FOR SALE OR FOR LEASE

Total Available: 1.91 Acres
Asking Price: Call for Pricing
Lease Rate & Type: \$5,500.00 per month, Gross

For More Information

Richard Sincore
+1 954 826 3636
rsincore@naimiami.com

For more listings visit: naimia-ftl.com/properties

NAI Miami
Fort Lauderdale

1.91-Acre Land in Alachua

NW 129th Way & Nano Court | Alachua, FL 32615



Property Features

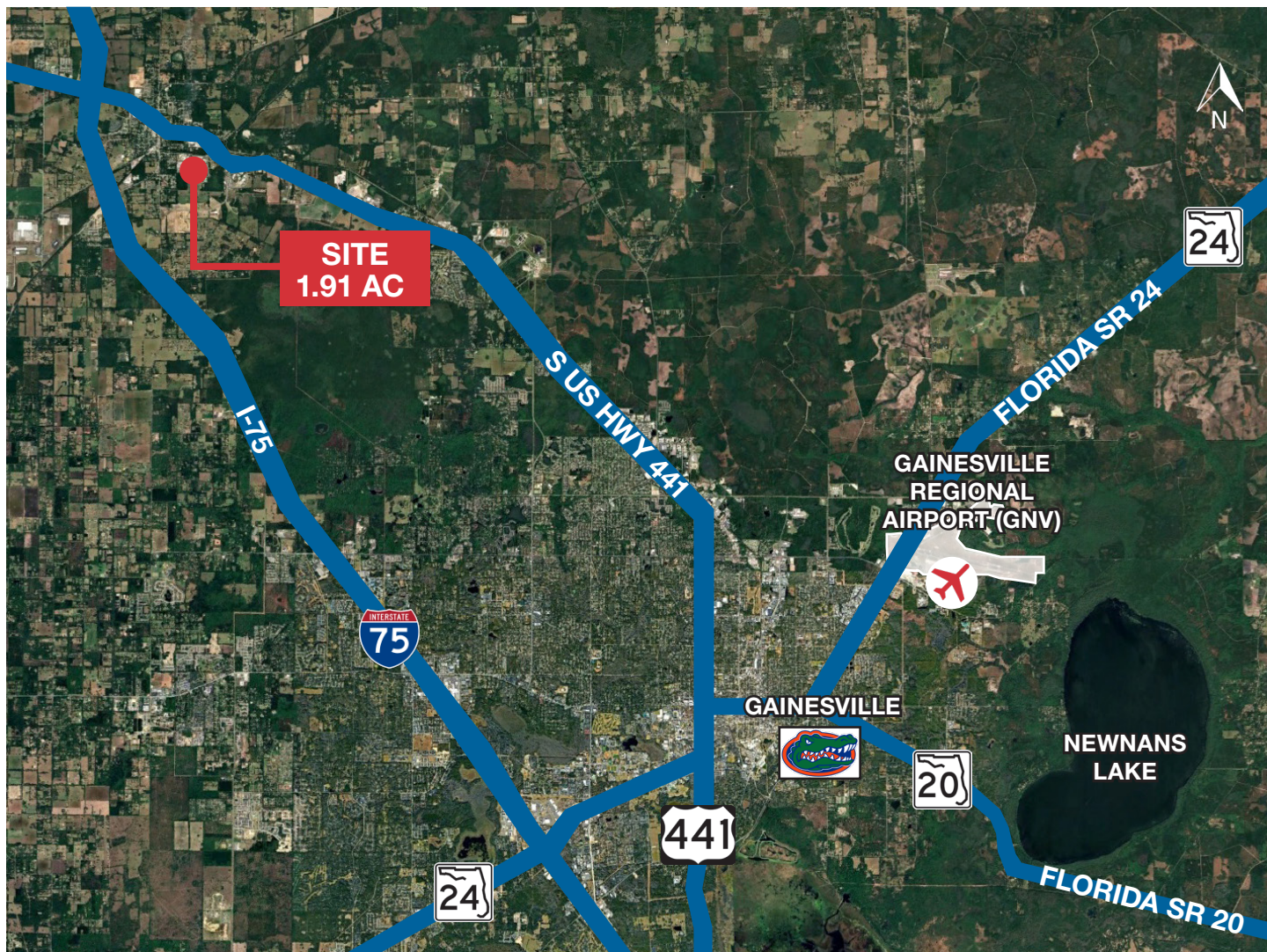
- Folio number: 03927-000-000
- Total Available: 1.91 Acres
- Lease Rate & Type: \$5,500.00 per month, Gross
- Excellent location for warehouses and/or outside storage
- Located in a rapidly growing industrial market
- Zoning 1000 ILW
- Close proximity to I-75 and easy access to S US Highway 441
- Located on a corner allowing for two Entry/Exit points
- Property situated on highest ground in Copeland Park
- Property is free of any easements and free of any environmental issues

Permitted Uses

- Building, heating, plumbing, or electrical contractors
- Heavy equipment sales, rental, or repair
- Truck or freight terminal
- Storage warehouse
- Manufacturing, light
- [Full list of permitted uses](#)

1.91-Acre Land in Alachua

NW 129th Way & Nano Court | Alachua, FL 32615



Demographic Summary



RADIUS

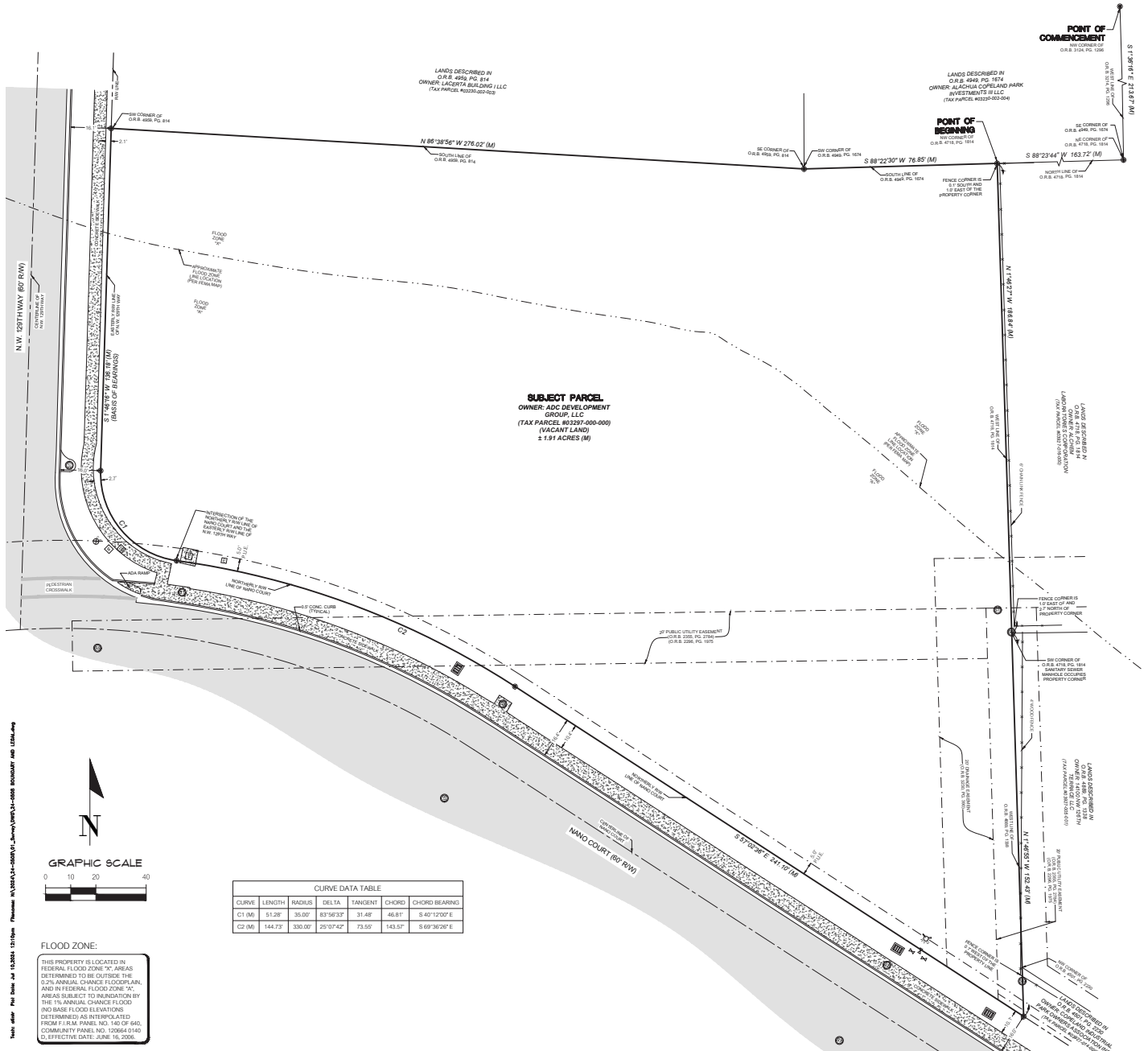

GAINESVILLE REGIONAL
AIRPORT (GNV)
± 16.5 Miles


GAINESVILLE
± 15 Miles

	1 Mile	3 Miles	5 Miles
Population	2,258	14,605	91,828
Households	867	5,889	37,982
Average Household Income	\$82,527	\$105,612	\$125,083
Employees	2,011	7,091	40,573

Survey

NW 129th Way & Nano Court | Alachua, FL 32615



For More Information

Richard Sincore

+1 954 826 3636

rsincore@naimiami.com



9655 South Dixie Highway, Suite 300, Miami, FL 33156

+1 305 938 4000

naimia-ftl.com

NO WARRANTY OR REPRESENTATION, EXPRESS OR IMPLIED, IS MADE AS TO THE ACCURACY OF THE INFORMATION CONTAINED HEREIN, AND THE SAME IS SUBMITTED SUBJECT TO ERRORS, OMISSIONS, CHANGE OF PRICE, RENTAL OR OTHER CONDITIONS, PRIOR SALE, LEASE OR FINANCING, OR WITHDRAWAL WITHOUT NOTICE, AND OF ANY SPECIAL LISTING CONDITIONS IMPOSED BY OUR PRINCIPALS NO WARRANTIES OR REPRESENTATIONS ARE MADE AS TO THE CONDITION OF THE PROPERTY OR ANY HAZARDS CONTAINED THEREIN ARE ANY TO BE IMPLIED.