

# AVAILABLE FOR LEASE

## 181 Walnut Avenue, Santa Cruz

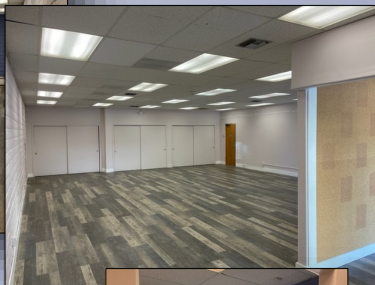
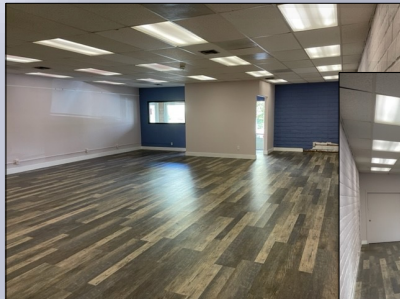
### OFFICE/RETAIL SUITE FOR LEASE

**DOWNTOWN SANTA CRUZ**



### 181 Walnut Avenue, Santa Cruz

**+/- 1,400 SF Suite for Lease**



Call us:

**(831) 454-9400**

Or visit our website:



- Prominent and Highly Visible Location in Downtown Santa Cruz
- East Access to all Downtown Amenities
- Close Proximity to City Parking Lots

**\$2,350/per Month**

**Modified Gross**

**JIM WISEMAN**

DRE #01104278

[jwiseman@sheldonwiseman.com](mailto:jwiseman@sheldonwiseman.com)

**KOLTON PICO**

DRE #02006875

[kpico@sheldonwiseman.com](mailto:kpico@sheldonwiseman.com)

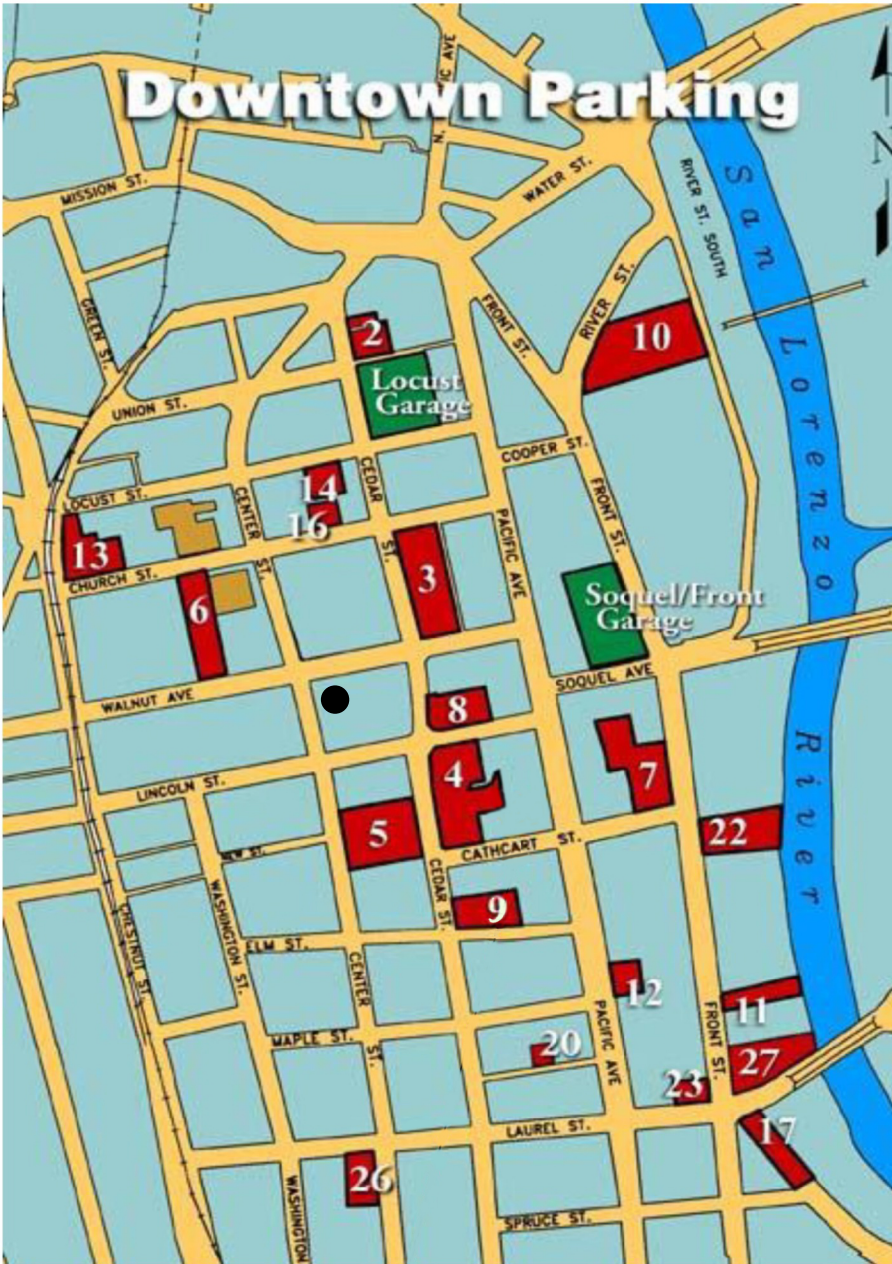


*While the information contained herein is deemed reliable, we cannot guarantee its accuracy. All information should be verified.*

1200 Pacific Avenue, Suite 390 ■ Santa Cruz, CA 95060

Tel: 831 • 454 • 9400 ■ Fax: 831 • 459 • 7988 ■ [www.sheldonwiseman.com](http://www.sheldonwiseman.com)

# DOWNTOWN SANTA CRUZ PARKING MAP



● 181 Walnut Avenue

#	STREET NAME	# OF STALLS
	Soquel/Front Garage	395
2	Walnut Tree	45
	Locust Garage	407
3	Cedar/Walnut	250
4	Lincoln/Cedar	139
5	Calvary Church	108
6	Civic Auditorium	44
7	Front/Cathcart	66
8	Pearl Alley	52
9	Elm/Cedar	46
10	River/Front	465
11	S. Front	24
12	S. Pacific	15
13	City Hall	62
14	Library	22
16	Center/Walnut	8
17	Laurel St	25
20	Birch Lane	4
23	Front/Laurel	24
27	Laurel/Front	32

*While the information contained herein is deemed reliable, we cannot guarantee its accuracy. All information should be verified.*

INTEGRITY ■ SERVICE ■ RESULTS

