



FLEX SPACE FOR LEASE

116 PIDGEON BAY RD
SUMMERVILLE, SOUTH CAROLINA

WOODLOCK
CAPITAL

RYLEY MCLELLAN
828-989-9642
ryley@woodlockcapital.com

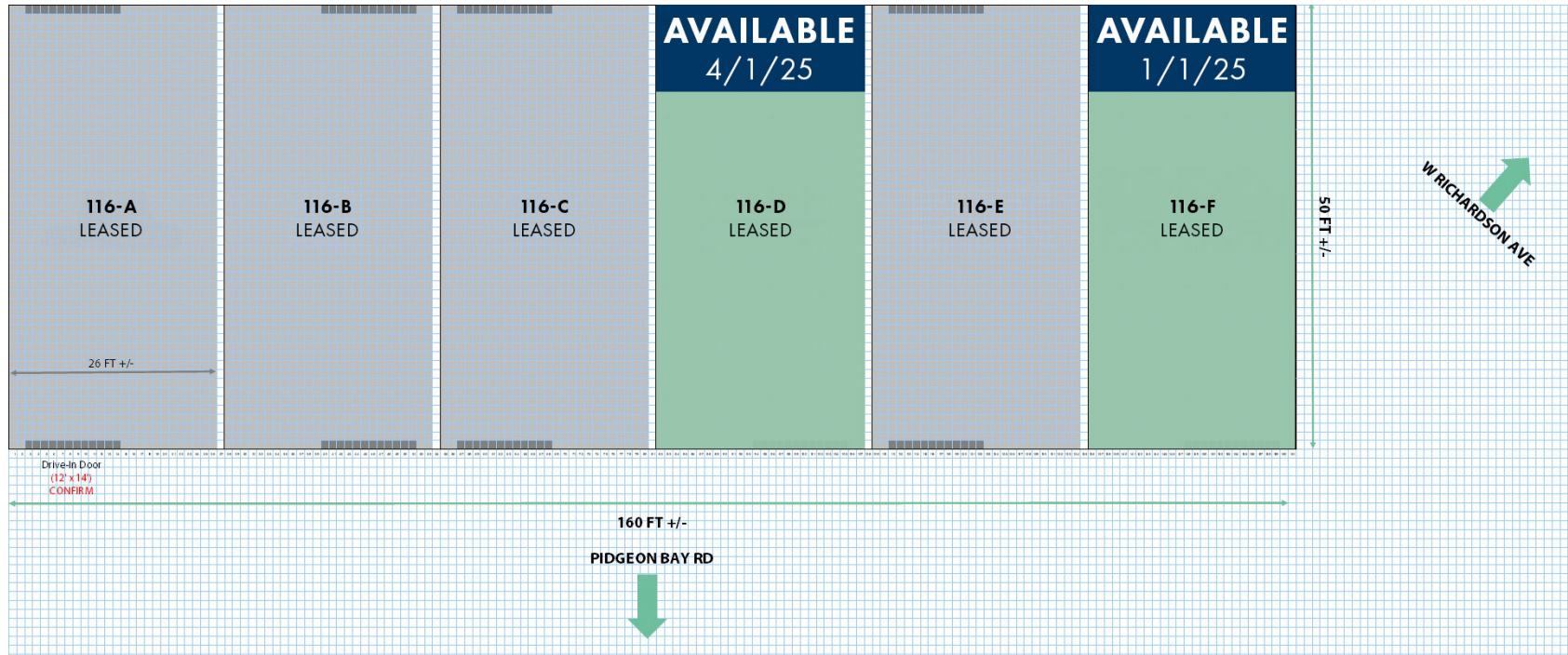
OFFICE 843-906-1137
2201 Mechanic Street, Suite C
Charleston, SC 29405

PROPERTY DETAILS

TOTAL SQFT: 1333 sqft
OFFICE: 1 (~120sqft)
BATHROOM: 1
ROLL-UP DOORS: 12 x 14 (2)
CLEARING HEIGHT: 16ft
ZONING: Industrial
PRICE: \$18.50 Gross

CHARLESTON AIRPORT: 20 Miles
I-26: 2.5 Miles
HIGHWAY 17: <1 Miles

Laydown yard available. Pricing upon request.





RIDGEVILLE

SUBJECT PROPERTY

NEXTON

LADSON

SUMMERVILLE

REGIONAL ACCESS

I-26 ON RAMP

2.5 miles | 5-10 minutes

CHARLESTON INTERVATIONAL AIRPORT

20 miles | 25-35 minutes

DOWNTOWN SUMMERVILLE

1.5 miles | 4-6 minutes

NEXTON

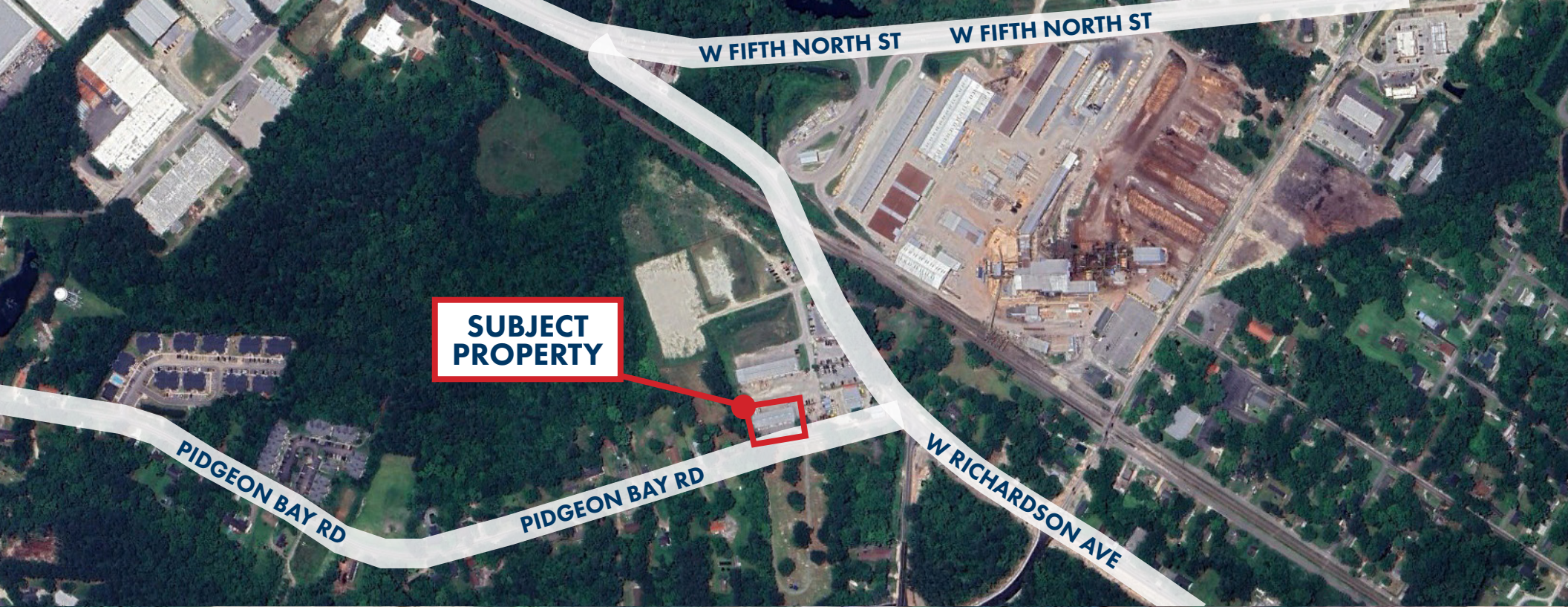
4 miles | 10-15 minutes

3 miles

5 miles

1 mile





**SUBJECT
PROPERTY**

PIDGEON BAY RD

PIDGEON BAY RD

W FIFTH NORTH ST

W FIFTH NORTH ST

W RICHARDSON AVE

