



821 Louise Ave

Plaza Midwood | Charlotte, NC 28204

821
Louise Avenue

Available for Lease

+/- 120 - 505 SF Office Suites in Plaza Midwood

Property Overview

821 Louise Ave Available for Lease

Located off of the Central Avenue and E 10th St. intersection in Plaza Midwood, this well-maintained office building sits in the perfect location, less than a minute from Uptown and walking distance to various retail, office and high-rise residential units. The building offers small individual offices suites ranging 120 - 505 SF.

Property Details

Address 821 Louise Ave | Charlotte, NC 28204

Parcel ID 081-114-27

Availability +/- 120 - 505 SF Available

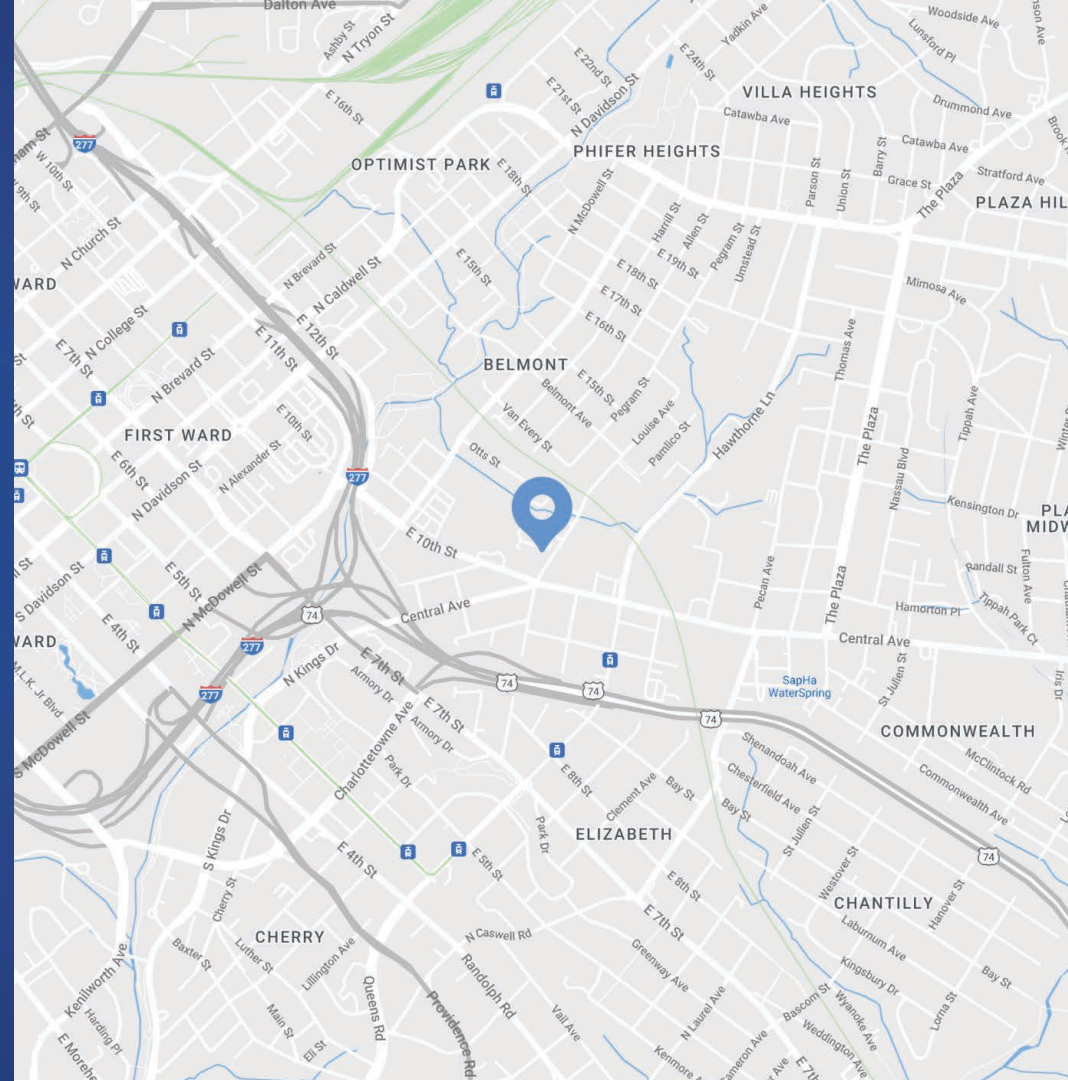
Acreage 0.48 AC

Zoning NC

Traffic Counts Louise Ave | 2,700 VPD
Central Avenue | 24,000 VPD

Lease Rate Call for Leasing Details

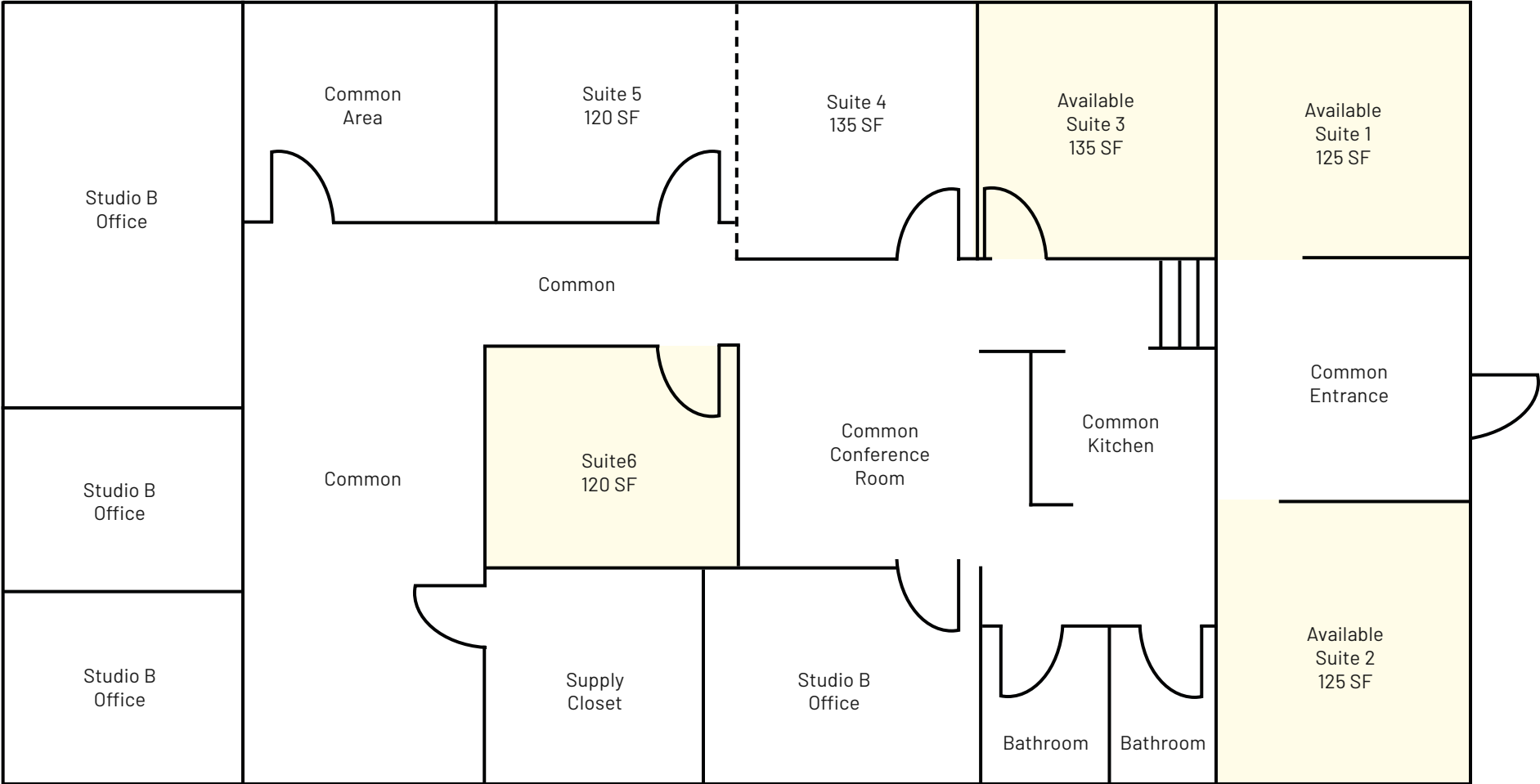
Additional Notes Common areas include: sitting area with couch and TV, two restrooms, kitchen and conference area



Demographics

| RADIUS | 1 MILE | 3 MILE | 5 MILE |
|--------------------------------|-----------|-----------|-----------|
| 2023 Population | 17,942 | 129,643 | 291,672 |
| Avg. Household Income | \$117,685 | \$131,028 | \$113,109 |
| Median Household Income | \$77,792 | \$83,216 | \$67,325 |
| Households | 9,991 | 66,311 | 132,451 |
| Daytime Employees | 22,902 | 160,342 | 252,532 |





Plaza Midwood

Charlotte, NC

Just a 1 mile cruise along Central Avenue from Uptown Charlotte will put you in a place where fashion, food, and art rule! Plaza Midwood is one of Charlotte's most unique, preeminent urban core neighborhoods. The neighborhood boasts a mixture of unique restaurants, art galleries, locally owned shops, popular bars, and live music venues. Recent years have witnessed its resurgence as a vibrant, highly sought after neighborhood with numerous upcoming and completed developments.





Interior Photos





Contact for Details

Taylor Barnes

(704) 274-1224

taylor@thenicholscompany.com



Website

www.TheNicholsCompany.com

Phone

Office (704) 373-9797

Fax (704) 373-9798

Address

1204 Central Avenue, Suite 201
Charlotte, NC 28204

This information has been obtained from sources believed to be reliable. While we do not doubt its accuracy, we have not verified it and make no guarantee, warranty or representation to independently confirm its accuracy and completeness.