

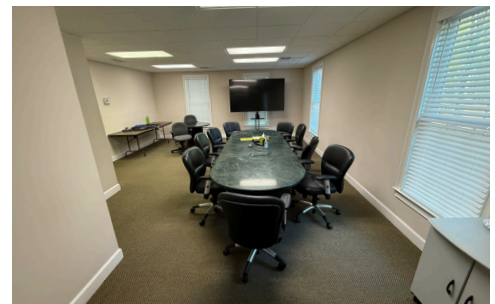


FOR SALE & LEASE
±1,920 – 5,760 SF

POWERS RIDGE OFFICE PARK

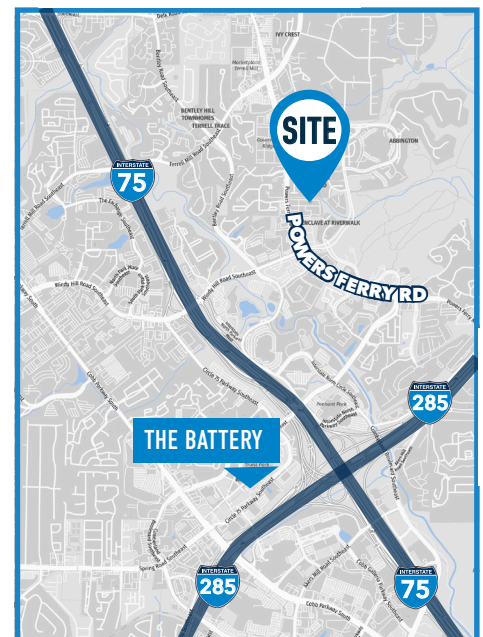
1827 Powers Ferry Rd SE #17

Office
Atlanta, GA
30339



OVERVIEW:

- » Full building for sale: ±5,760 SF
- » First, second, & third floors for lease: ±1,920 SF
- » Two restrooms and HVAC controls per floor
- » Single- or multi-tenant building
- » Located in Powers Ridge Office Park, which includes 25 buildings in a park-like setting
- » Parking ratio: 4:1000
- » Beautifully landscaped
- » Easy access to Windy Hill Rd, I-75, and I-285
- » Less than one mile to I-75
- » Cumberland submarket



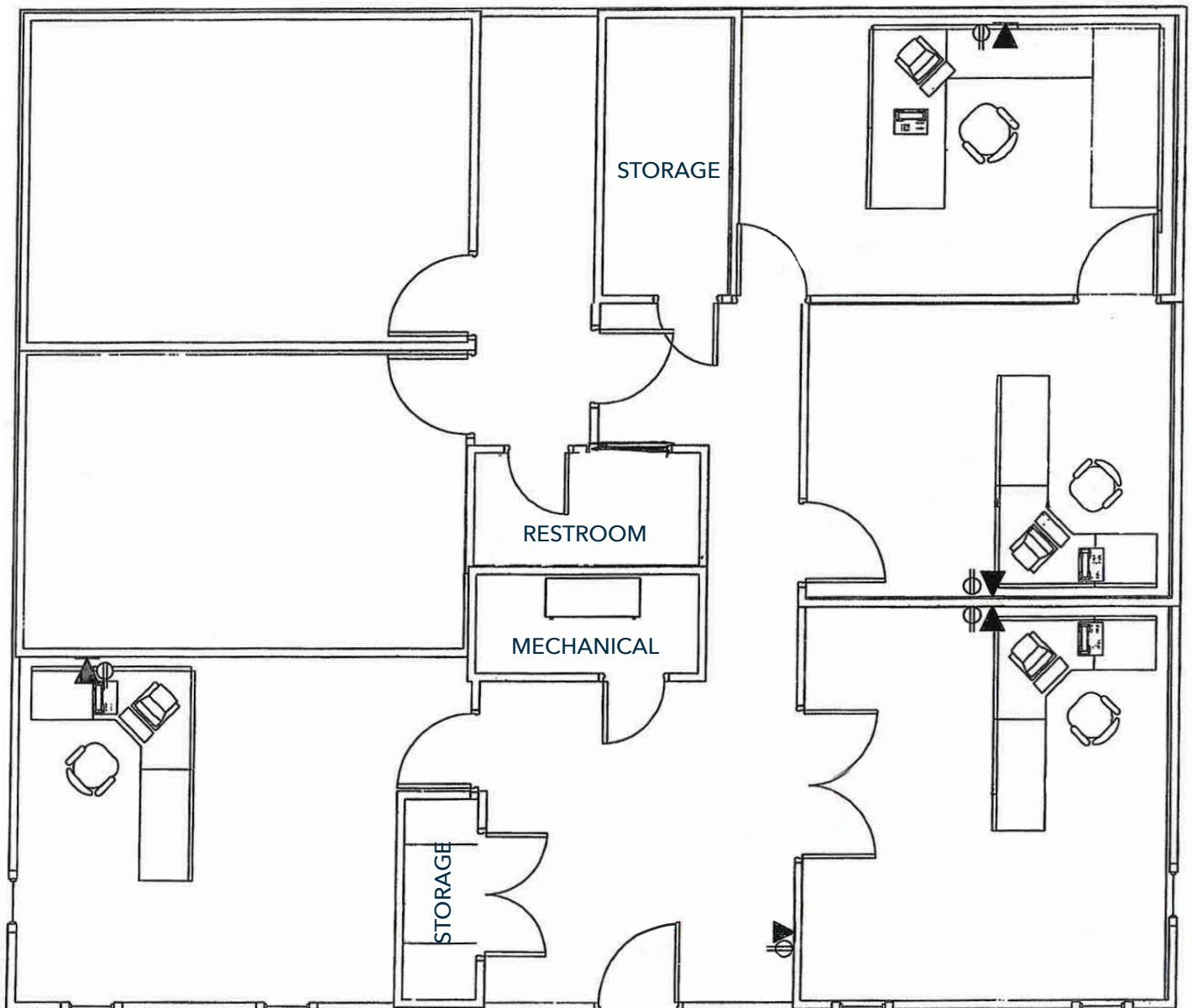
PX Head
404.272.3408
pxhead@skcr.com

Orin Whittaker
404.786.1618
owhittaker@skcr.com

POWERS RIDGE OFFICE PARK

1827 Powers Ferry Rd SE #17

FIRST FLOOR
±1,920



PX Head
404.272.3408
pxhead@skcr.com

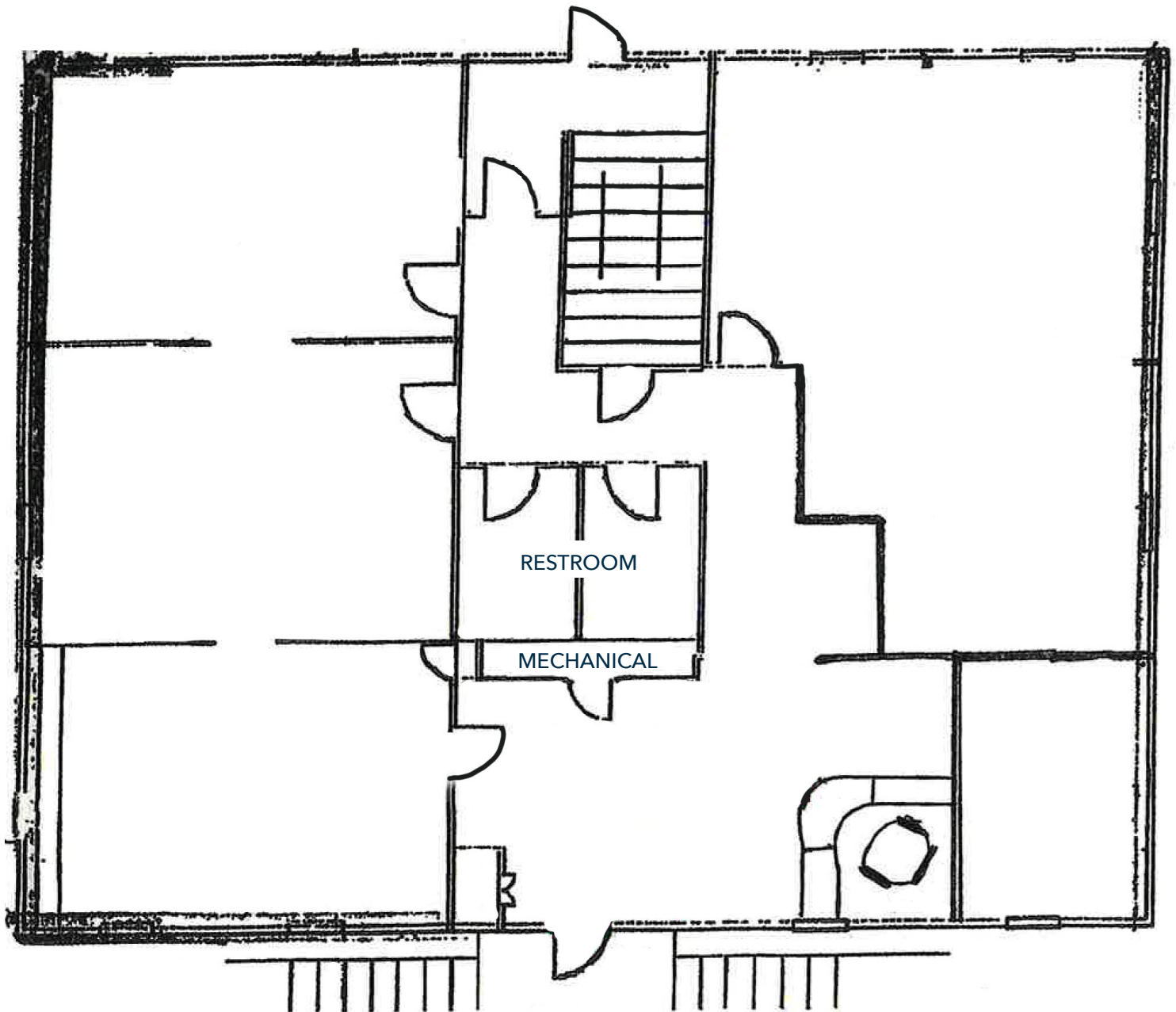
Orin Whittaker
404.786.1618
owhittaker@skcr.com



POWERS RIDGE OFFICE PARK

1827 Powers Ferry Rd SE #17

SECOND FLOOR
±1,920



PX Head
404.272.3408
pxhead@skcr.com

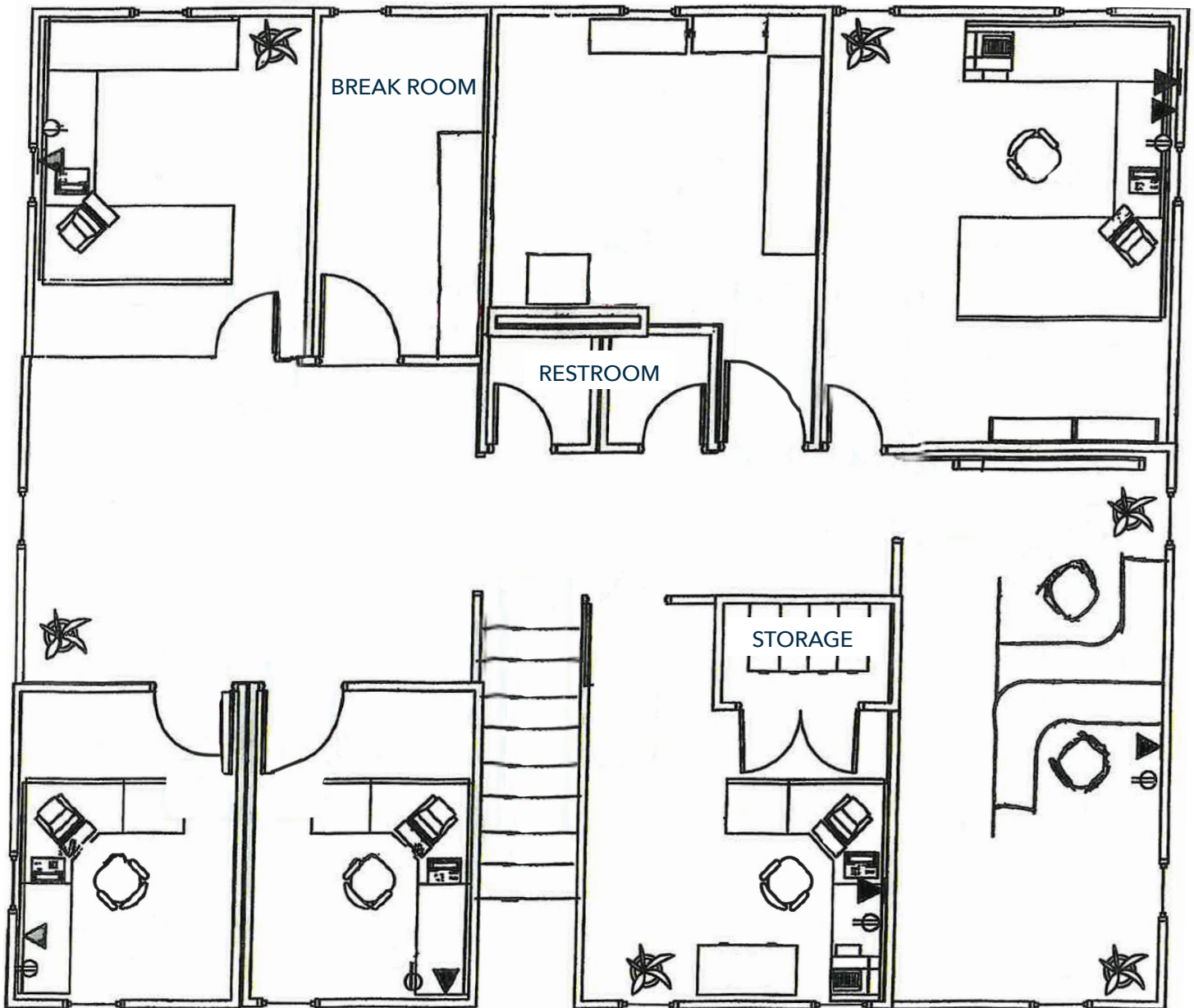
Orin Whittaker
404.786.1618
owhittaker@skcr.com



POWERS RIDGE OFFICE PARK

1827 Powers Ferry Rd SE #17

THIRD FLOOR
±1,920



PX Head
404.272.3408
pxhead@skcr.com

Orin Whittaker
404.786.1618
owhittaker@skcr.com

