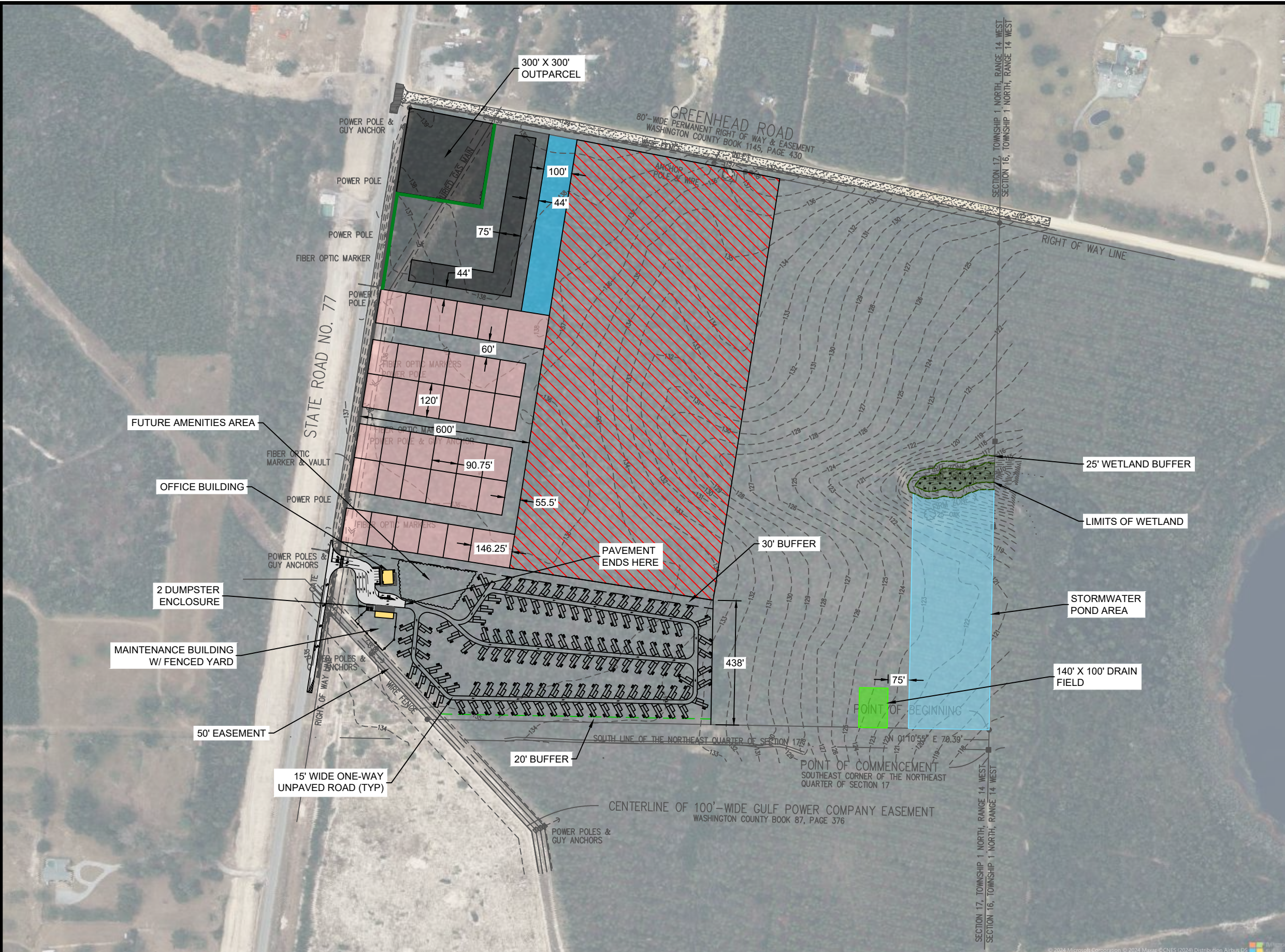
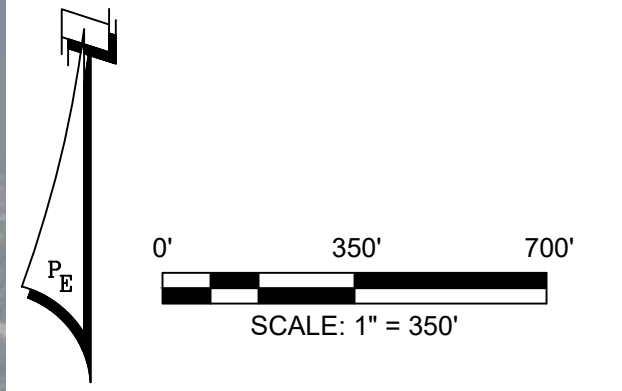


CONCEPTUAL SITE DATA		
DEVELOPMENT AREA	4,529,368.8± SF	
BUILDING AREA	103.98± AC	
PARKING REQUIREMENTS	REQUIRED PROVIDED	XX PARKS XX PARKS

PREPARED WITHOUT BENEFIT OF TOPO OR BOUNDARY SURVEY AND SOIL PERCOLATION TEST, THEREFORE SITE LAYOUT & STORMWATER BASIN SIZING IS PRELIMINARY.

- ZONED: XXXX
- BUFFER: 10 FT. BUFFER ALONG STREETS & HIGHWAYS (VERIFY)
- BUILDING SETBACKS: FRONT XX' SIDE XX' SIDE (ADJ. TO ST. OR RES XX') REAR XX'
- FLOOR AREA RATIO: XXX%
- IMPERVIOUS SURFACE RATIO: XX% (BEACHES STZ)
- MAX. BUILDING HEIGHT: XXX'
- PARKING STALL REQUIREMENT: STANDARD STALL 9'min.X20'min. HC STALL 12'min.X20'min. W/5' ISLE HC VAN STALL 12'minX20'min. W/8' ISLE (90° PARKS)
- PARKING REQUIREMENTS: PROJECT DESCRIPTION: (SEE LDR)

PHASE 1 RV SPACES = 168



Date: Thursday, February 15, 2024 1:27:53 PM ID: David J Jauch File: P:\79526 Greenhead RV Park\1_CML3D\Folder\Drawings\CSP\79526_CSP.dwg

REV	DATE	MMM	REVISIONS	SCALE: AS NOTED
				DESIGNED BY: JDC
				DRAWN BY: DJJ
				REVIEWED BY: JDC
				ISSUE DATE: FEBRUARY 2024
				ACAD FILE NAME: 79526_CSP.dwg
NOT	RELEASED FOR CONSTRUCTION	BY:	DATE:	

PANHANDLE ENGINEERING
 ENVIRONMENTAL ENGINEERS • CIVIL ENGINEERS • LAND PLANNERS
 600 Ohio Avenue Lynn Haven, Florida 32444
 (850)763-5200 www.panhandleengineering.com

CONCEPTUAL SITE PLAN
GREENHEAD
RV PARK
 GREENHEAD, FLORIDA

DPR CERTIFICATION No:	EB-7806
SHEET NO:	1 of 1
PROJECT NUMBER:	79526