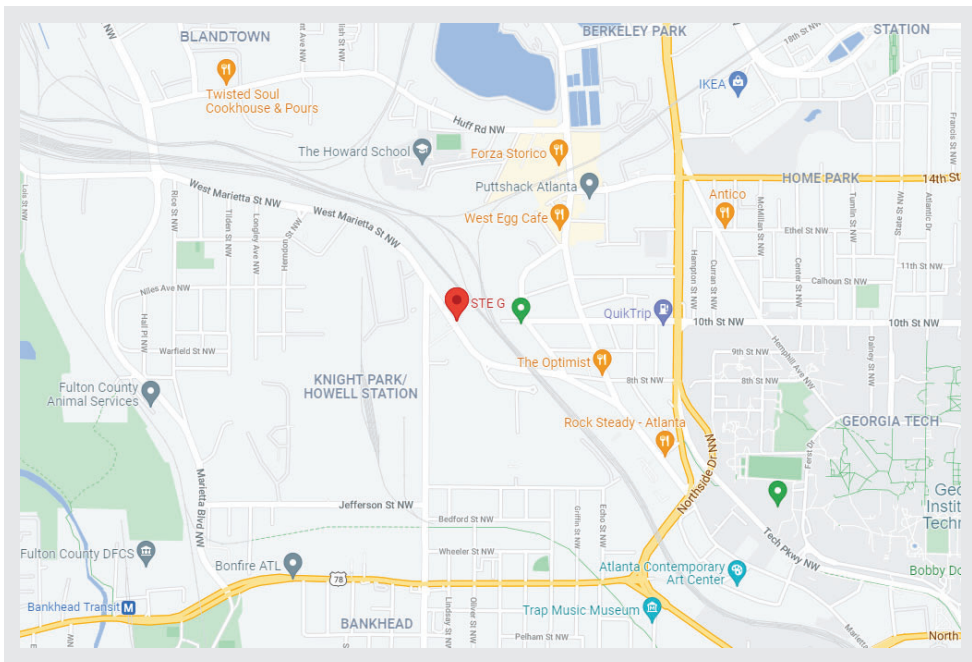


# For Lease



## King Plow Arts Center

887 W Marietta St NW, Suite G  
Atlanta, GA 30318



### Space Details:

- 1,181 SF Loft
- Zoned for Live/Work
- Has a Kitchen and Full Bath
- Corner Unit with exposed brick and large windows
- On-site security and property management
- Parking: 10.00/1,000 SF (2 reserved)

**Rate: \$26.00/SF MG**



### For More Information:



**Michael Anderson**  
404.513.3417  
manderson@cspgcompanies.com

#### Area Amenity Drive Times:

- |                       |        |
|-----------------------|--------|
| • Westside Park       | 4 Min  |
| • Westside Provisions | 4 Min  |
| • Georgia Tech        | 7 Min  |
| • Downtown            | 7 Min  |
| • Midtown             | 10 Min |

#### Amenities within 1 Mile:

Restaurants:	28
Retail & Service:	21

Virtual Tour of King Plow Art Center:  
<https://youvis.it/UfXvFp>

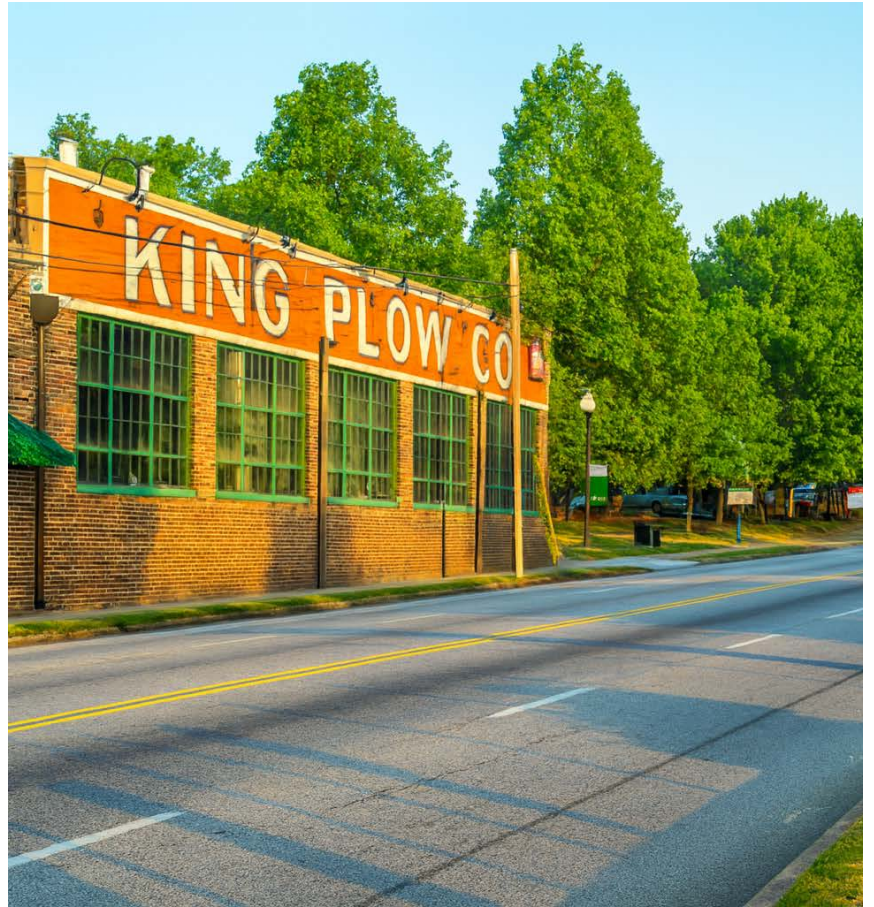




# THE HISTORY

King Plow Arts Center

Originally built between 1890 & 1938, the complex was revitalized in the mid 1990s into the largest arts center in the city of Atlanta



## A place for the arts

The **King Plow Arts Center** features expansive open spaces with high ceilings, large windows utilizing the natural light, heavy steel beams reflecting an industrial age long gone by, oak and pine timbers worn by almost a century of use and a rail spur – now a landscaped courtyard – makes the former King Plow factory an interesting place to live, work and create dreams.

Originally built from 1890 to 1938, this farm equipment manufacturing complex was revitalized in the mid 1990's into an arts related complex, encompassing residences, studios, galleries, commercial space, performance space and exhibition space.

The center has won numerous awards for excellence in renovation, including the AIA Urban Design Commission's Award of Excellence for Architecture and the Georgia Trust for Historic Preservation Award and has become a model for adaptive reuse of historic structure.

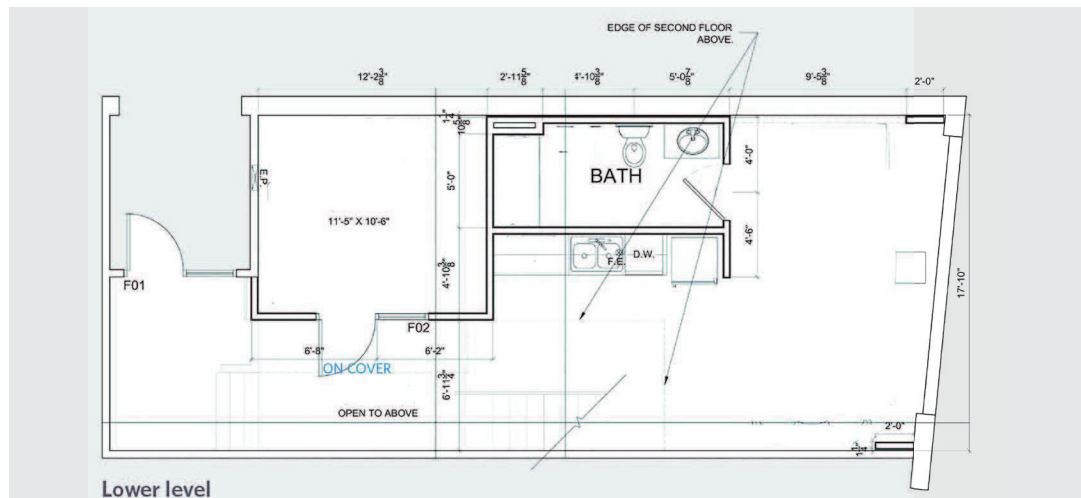
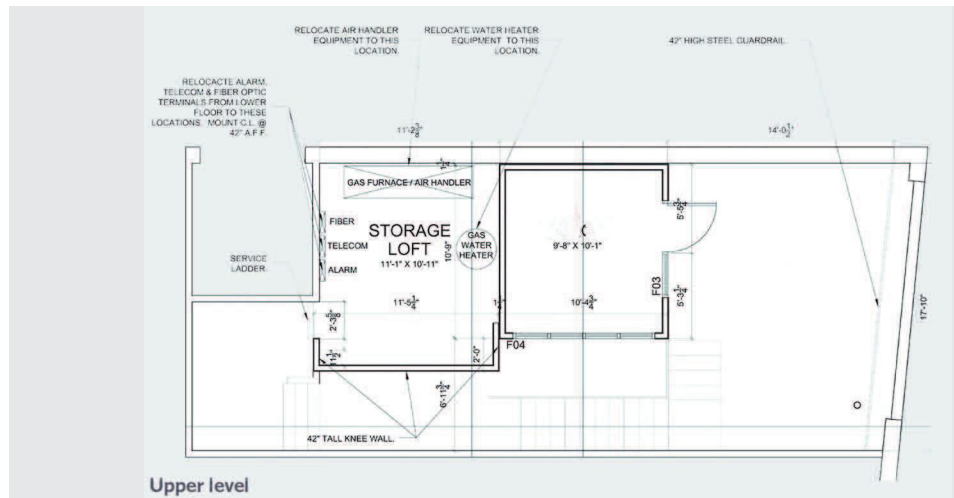
For more information, contact:

**Michael Anderson, Director**

Phone: 404-513-3417 • Email: [manderson@cspgcompanies.com](mailto:manderson@cspgcompanies.com)



**887 W Marietta St NW**



Phone: 404-513-3417 • Email: [manderson@cspgcompanies.com](mailto:manderson@cspgcompanies.com)



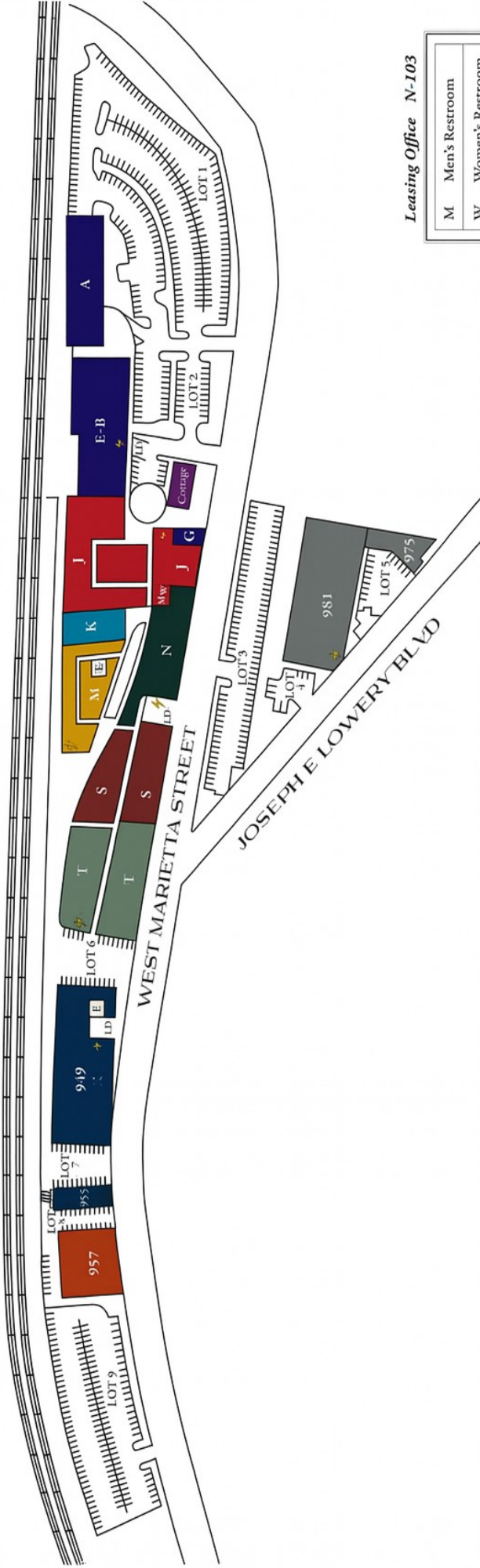




# King Plow Campus Map



SOUTHERN RAILWAY



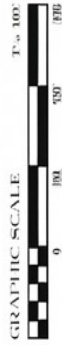
Leasing Office N-103

M	Men's Restroom
W	Women's Restroom
E	Elevator
⚡	Electrical Closet
LD	Loading Deck

KING PLOW ARTS CENTER

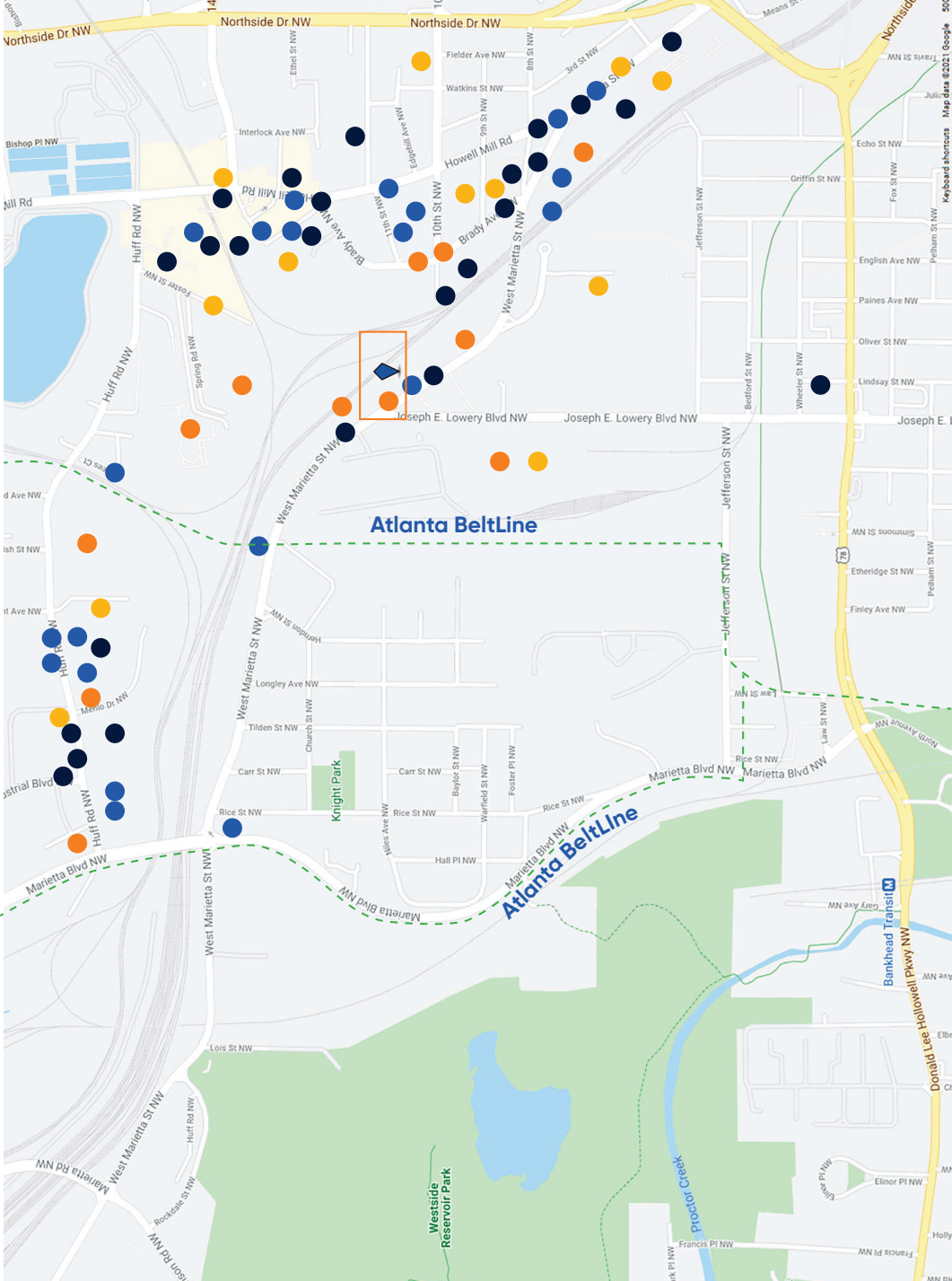
## DIRECTORY

*An Arts Community & Center for Commercial, Performing, & Visual Arts*  
887 W. Marietta Street, N.W. Atlanta, Georgia 30318 | 404-885-9933





## West Midtown Amenities



## Drive Times

Inman Park	4 Min
Westside Provisions	4 Min
Georgia Tech	7 Min
Downtown	7 Min
1-75 at 10th/14th	8 Min
Morehouse College	10 Min
Midtown	10 Min
Buckhead	12 Min
Hartsfield Jackson	20 Min

