



For Lease

# 12801 N Central Expy

Dallas, TX, 75243

AVISON  
YOUNG





## Dallas office opportunity with many on-site amenities

- Furniture available
- Included on-site amenities are fitness center, food service, conference center, courtyard, banking on-site
- Quick access to LBJ Freeway/N Central Expy
- Several restaurants, retail shops and residential options nearby



8,542 RSF available space



Expiration date:  
March 31, 2026



Rental rate: \$16.50 + E



Available immediately



Parking ratio: 3.20/1,000

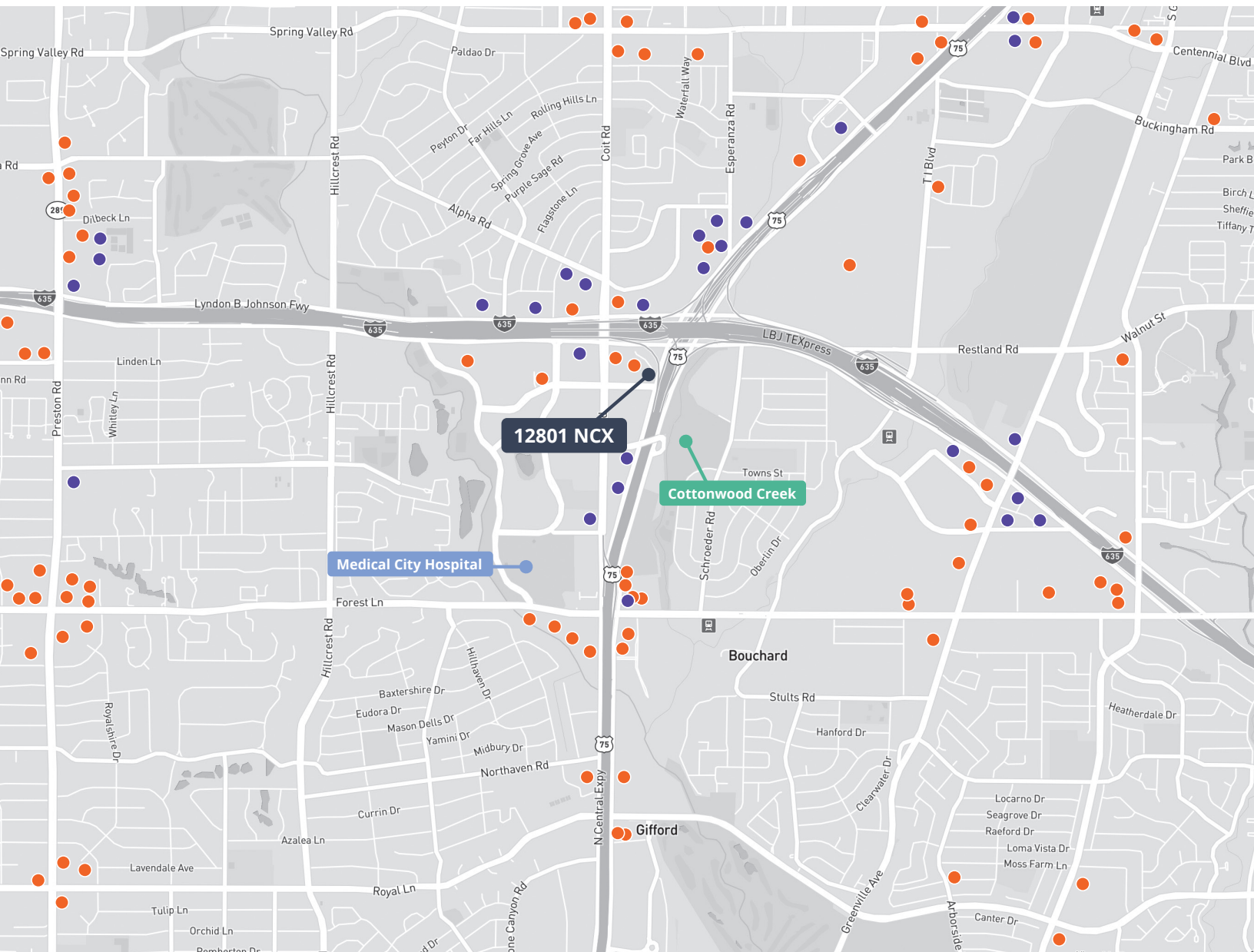
**Get more  
information**

**Brian Whittington**  
+1 214 269 3125  
brian.whittington@avisonyoung.com

avisonyoung.com

## Area amenities

12801 N Central Expy



76

restaurants  
options

25

hotel  
options



0.5 miles to  
Cottonwood  
Creek Trail

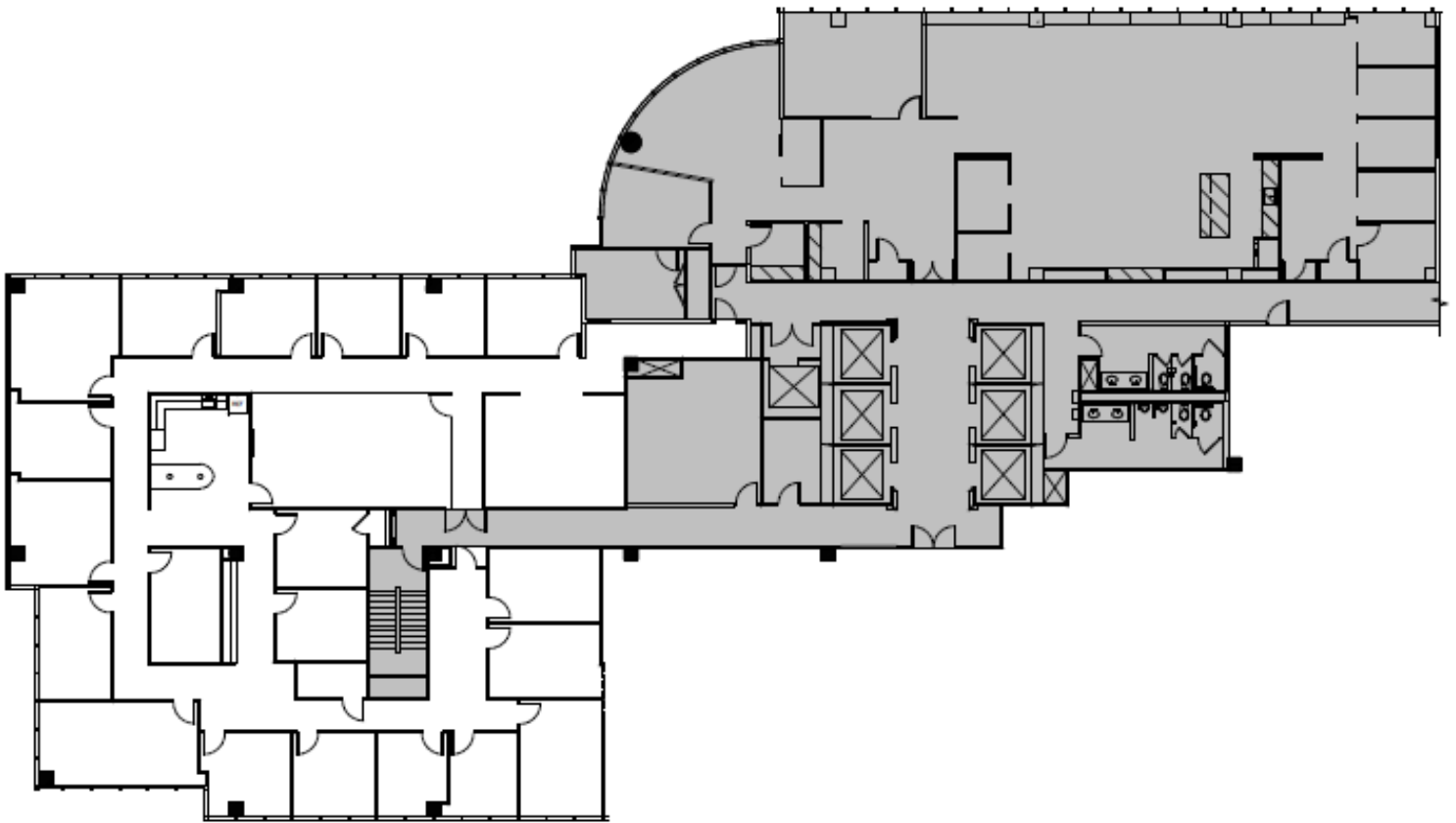


2 miles to  
Medical City  
Hospital









**Brian Whittington**  
+1 214 269 3125  
brian.whittington@avisonyoung.com

**AVISON  
YOUNG**