

# MEDICAL OFFICE RETAIL DEVELOPMENT OPPORTUNITY

510 Gloucester Street  
Brunswick, GA 31530



- +/- 1.6 Acre Site
- +/- 25,000 SF Existing Building with 50 Parking Spots
- 2 Stories
- Built 1957
- Surrounded by Dense Retail and Supporting Residential
- Great Visibility and Traffic Count
- Former bank building poised for a transformative renovation. Short walk to City Hall, restaurants and shops.

# MEDICAL OFFICE RETAIL REDEVELOPMENT OPPORTUNITY

510 Gloucester Street  
Brunswick, GA 31530



## Population

1 Mile	6,663
3 Mile	16,939
5 Mile	31,226

## # of Households

1 Mile	2,541
3 Mile	5,936
5 Mile	12,289

## Median HH Income

1 Mile	\$30,102
3 Mile	\$30,459
5 Mile	\$41,374

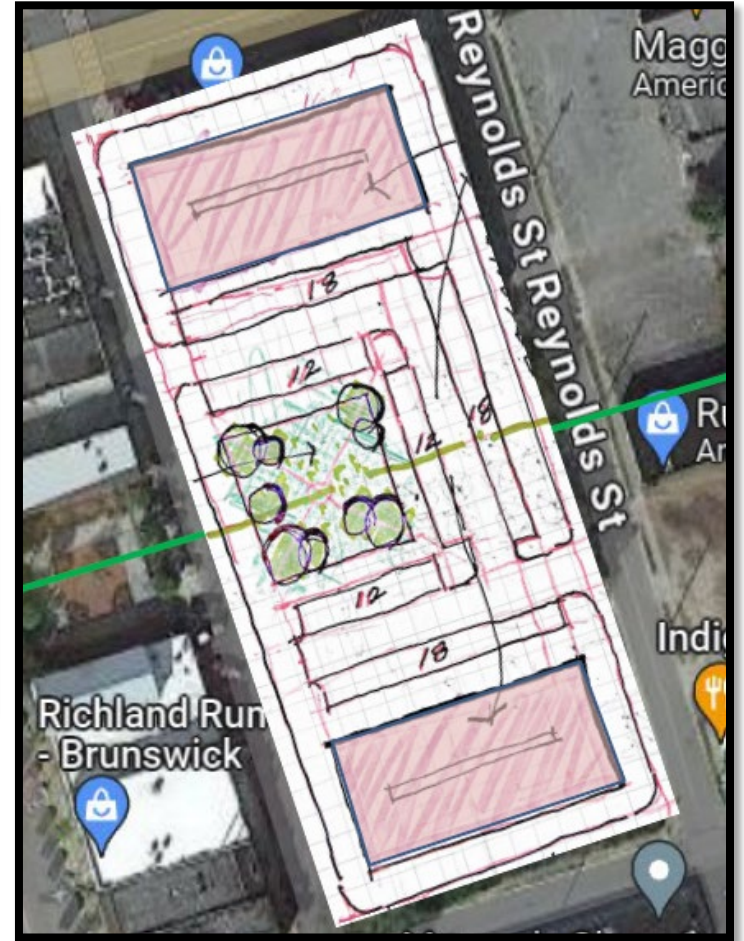
## Average HH Income

1 Mile	\$62,569
3 Mile	\$60,638
5 Mile	\$71,304



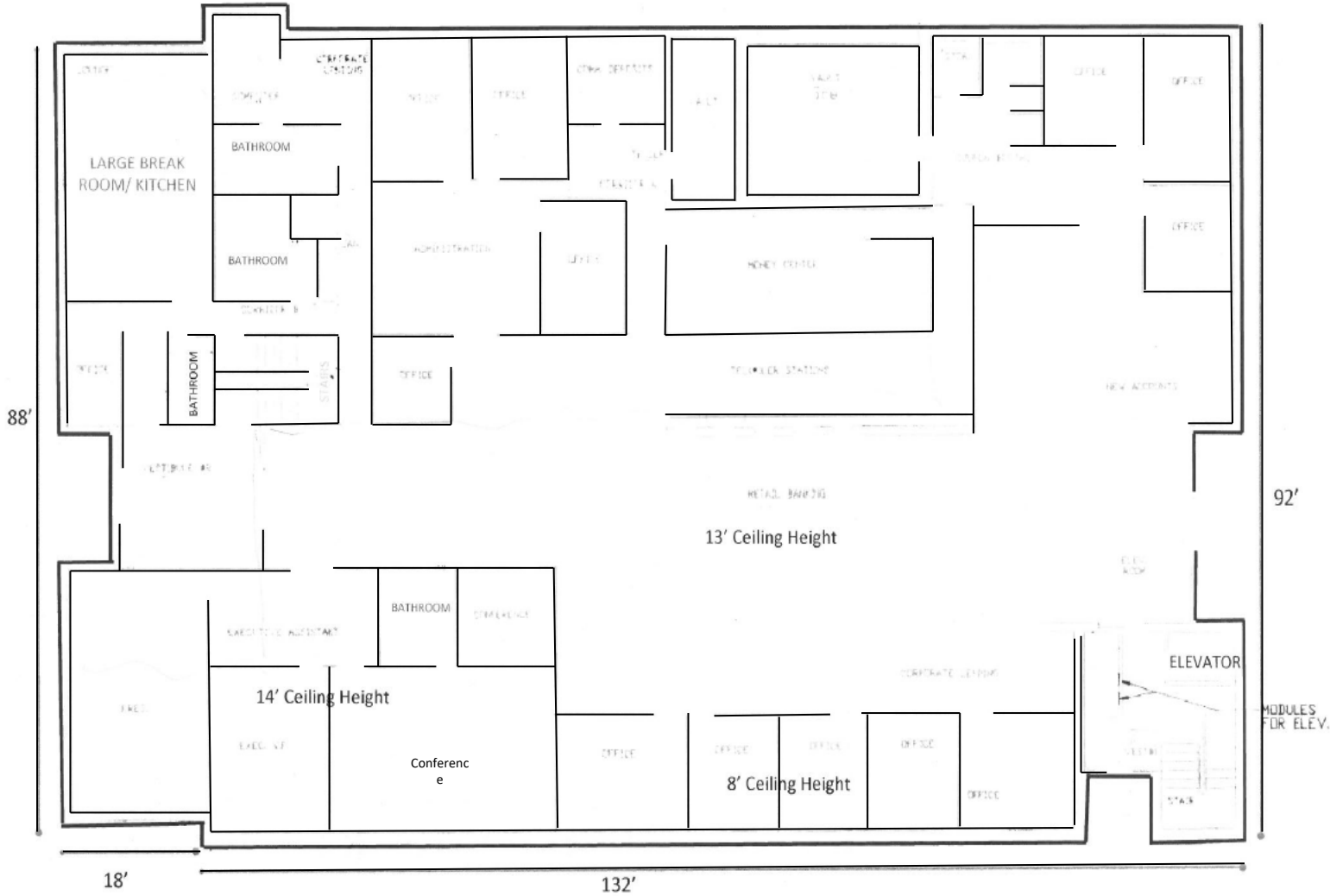
# POTENTIAL CONCEPTS OF REDEVELOPMENT

510 Gloucester Street  
Brunswick, GA 31530



# FIRST FLOOR PLAN

510 Gloucester Street  
Brunswick, GA 31530



# FIRST FLOOR PLAN

510 Gloucester Street  
Brunswick, GA 31530

