

For Sale
±103.5 AC
Recreational/Rural



“North Crane Creek”

132 Wessinger Lane, Columbia SC (±103.5 acres)

NAIColumbia

Contact: Jeff Hein, SIOR
D: 803.744.9825
C: 803.530.4723
jhein@naicolumbia.com

Hope Andrews
D: 803.744.9869
C: 803.960.1570
handrews@naicolumbia.com

Will DuPree
D: 803.744.9822
C: 803.239.1688
wdupree@naicolumbia.com

THE INFORMATION CONTAINED HEREIN HAS BEEN GIVEN TO US BY THE OWNER OF THE PROPERTY OR OTHER SOURCES WE DEEM RELIABLE. WE HAVE NO REASON TO DOUBT ITS ACCURACY, BUT WE DO NOT GUARANTEE IT. ALL INFORMATION SHOULD BE VERIFIED PRIOR TO PURCHASE OR LEASE.

807 Gervais Street, Suite 200
Columbia, South Carolina 29201
803.254.0100
www.naicolumbia.com

For Sale
±103.5 AC
Recreational/Rural

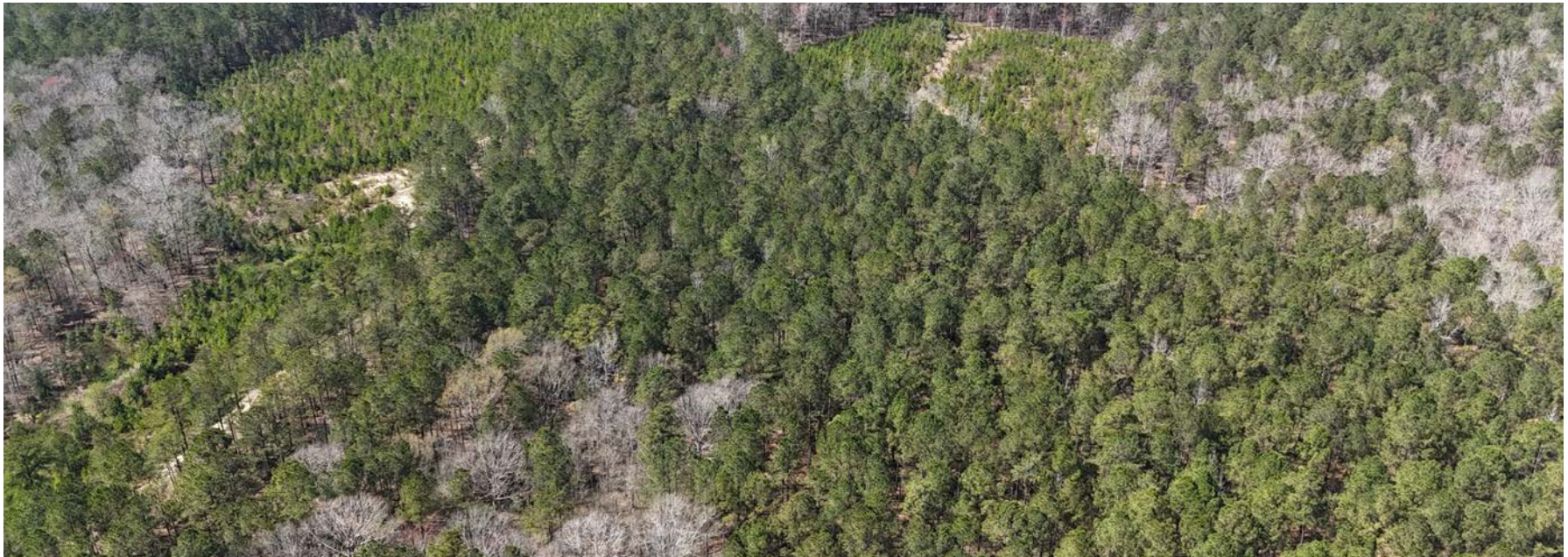
Executive Summary

“North Crane Creek” 132 Wessinger Lane, Columbia, South Carolina

North Crane Creek is a Recreational Tract consisting of approximately ±103.5 acres located just 8 miles north of downtown Columbia, South Carolina. This incredible property includes a mixture of 8 ft planted Pines and mixed Hardwoods. Along the rear of the property, runs the beautiful and tranquil Crane Creek.

Located approximately 3.5 miles from Interstate 20 off Exit 70, North Crane Creek can be accessed from Columbia, Camden, and Sumter all in less than 30 minutes, while Charlotte is less than a ±1.5 hour drive up the road. Due to this fantastic location and Rural Zoning, this property has endless possibilities, ranging anywhere from a hunting reserve to the ever popular disc golf course.

The **Sale Price** for North Crane Creek is: **\$1,213,800.00 (\$11,727 per acre)**



THE INFORMATION CONTAINED HEREIN HAS BEEN GIVEN TO US BY THE OWNER OF THE PROPERTY OR OTHER SOURCES WE DEEM RELIABLE. WE HAVE NO REASON TO DOUBT ITS ACCURACY, BUT WE DO NOT GUARANTEE IT. ALL INFORMATION SHOULD BE VERIFIED PRIOR TO PURCHASE OR LEASE.

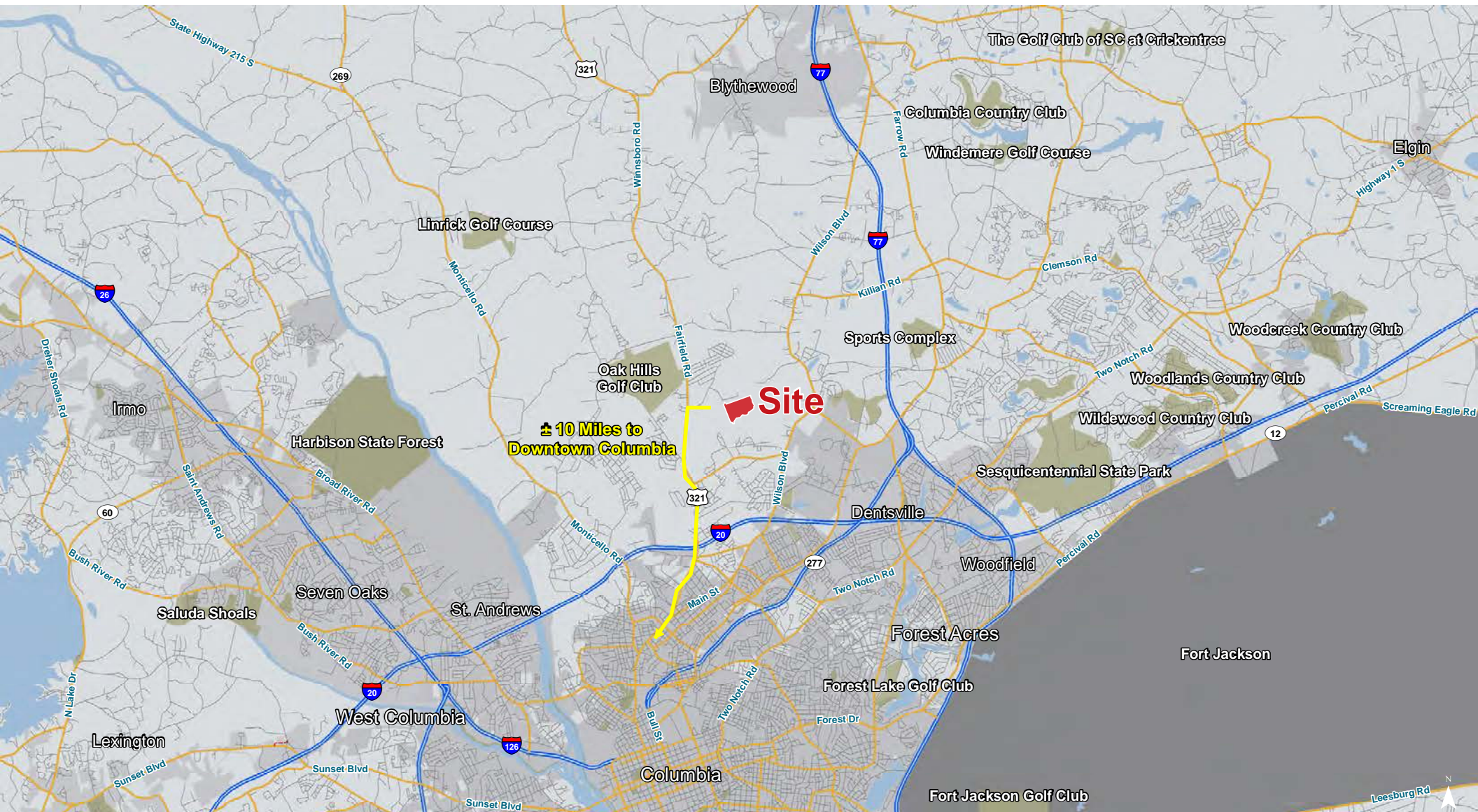
NAIColumbia

807 Gervais Street, Suite 200
Columbia, South Carolina 29201
803.254.0100
www.naicolumbia.com

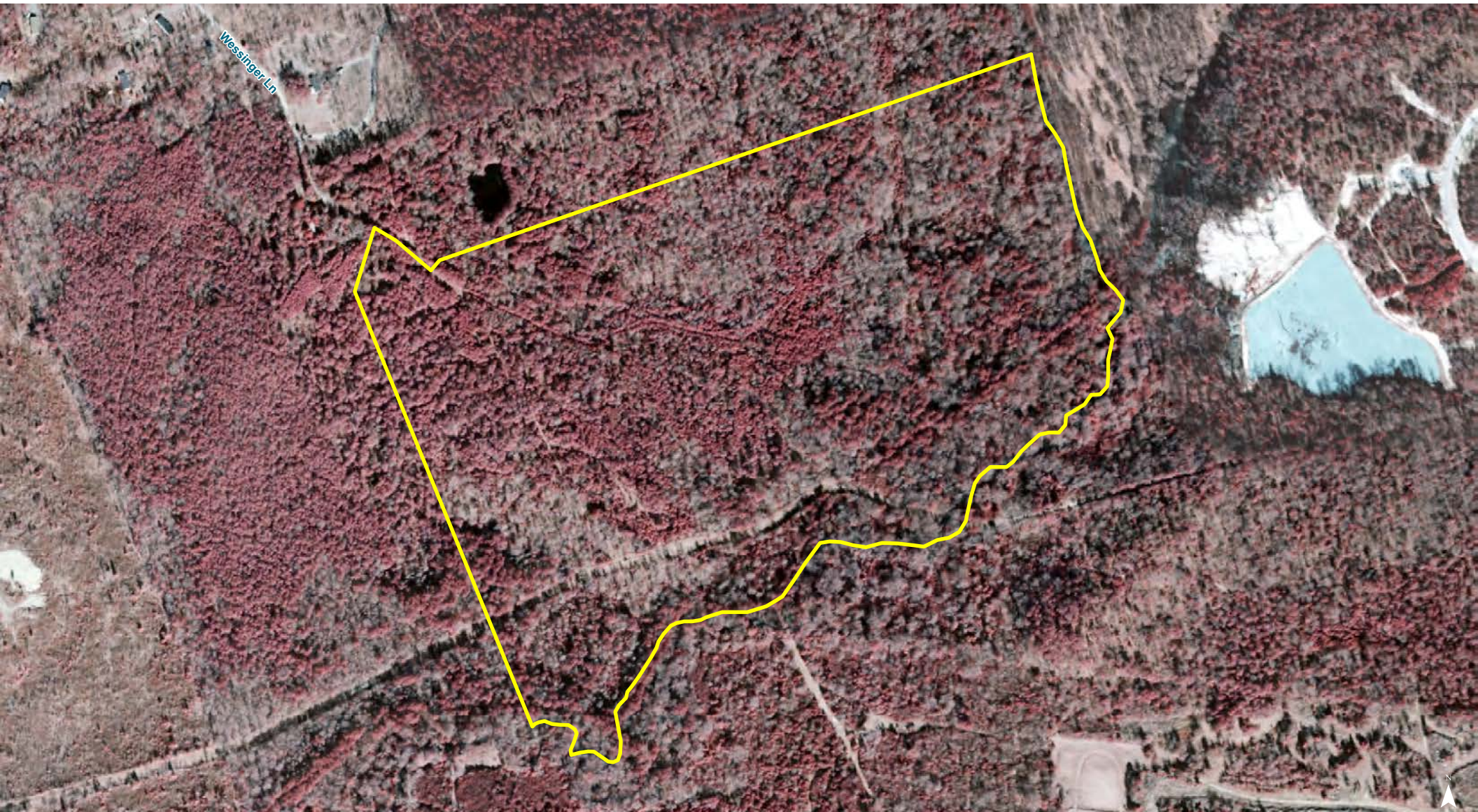




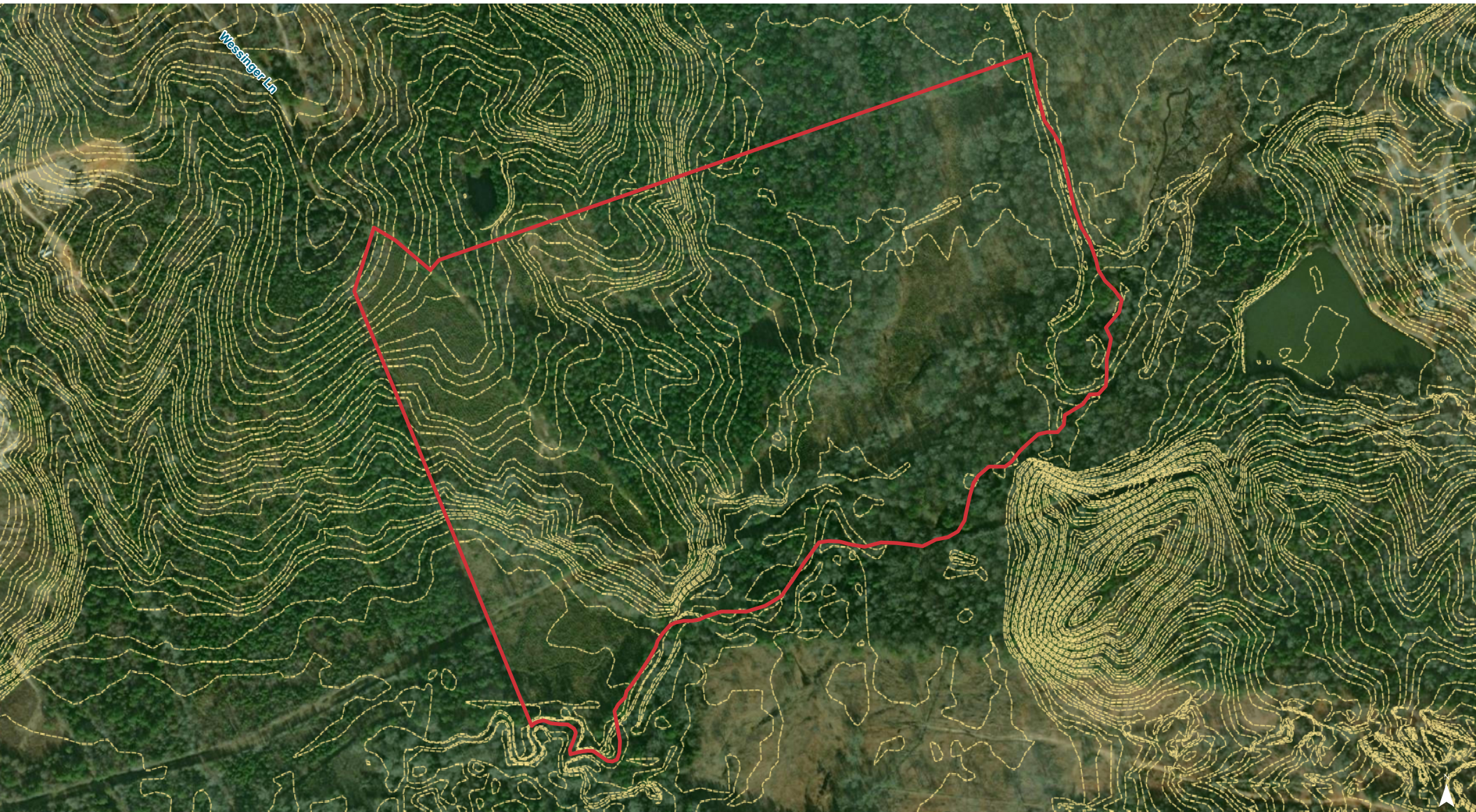
Location





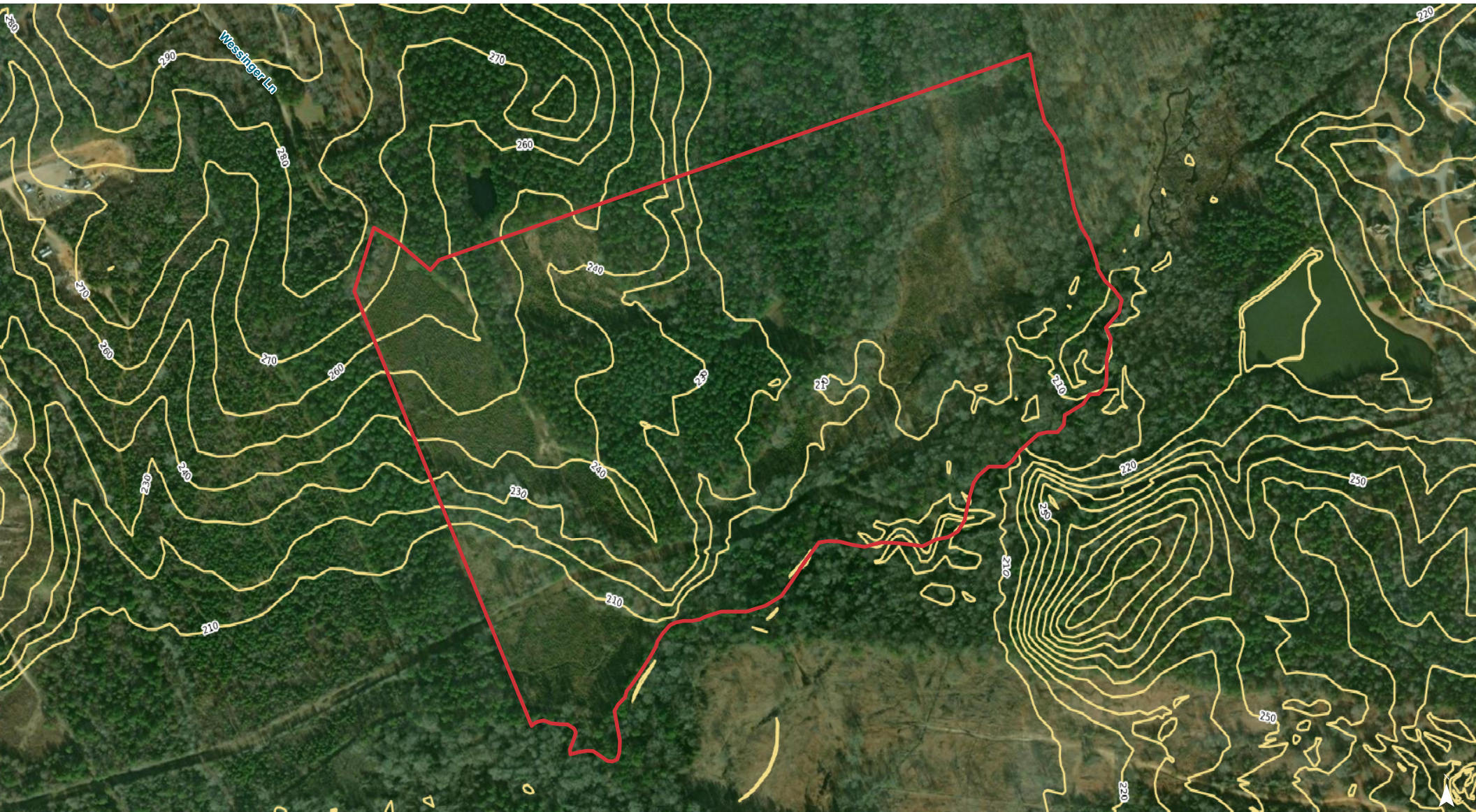


Topographical Map: 2'

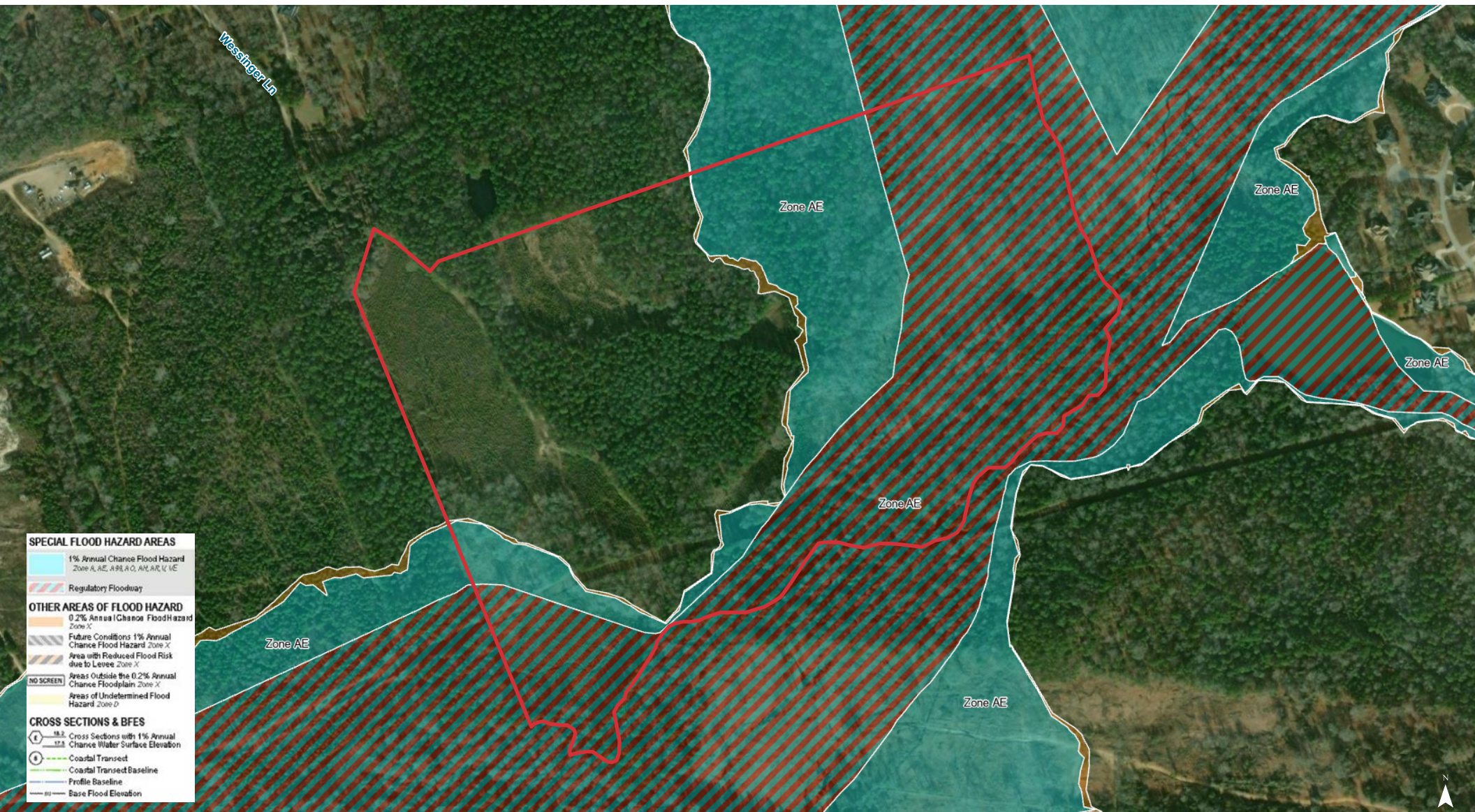


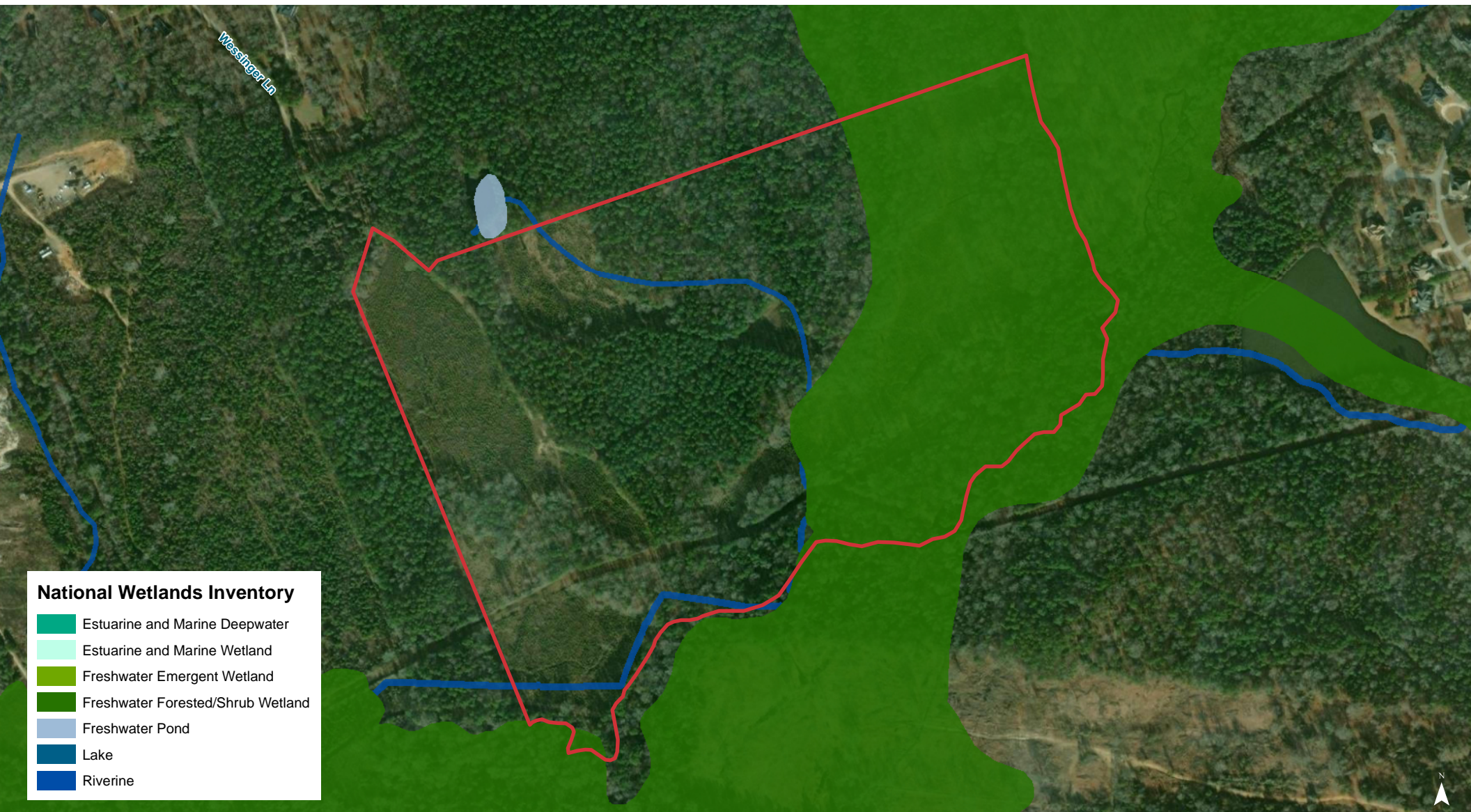
Map Updated: Thursday, March 14, 2024. This information submitted is not guaranteed. Although obtained from reliable sources, all information should be confirmed prior to use or reliance upon the information. This document may not be reproduced in whole or in part without the express written consent of NAI Columbia.

Topographical Map: 10'



FEMA Flood Zones







Map Updated: Thursday, March 14, 2024. This information submitted is not guaranteed. Although obtained from reliable sources, all information should be confirmed prior to use or reliance upon the information. This document may not be reproduced in whole or in part without the express written consent of NAI Columbia.

Map Unit Description (Brief, Generated)

Richland County, South Carolina

[Minor map unit components are excluded from this report]

Map unit: CH - Chewacla soils

Component: Chewacla (80%)

The Chewacla component makes up 80 percent of the map unit. Slopes are 0 to 2 percent. This component is on flood plains on coastal plains. The parent material consists of loamy alluvium. Depth to a root restrictive layer is greater than 60 inches. The natural drainage class is somewhat poorly drained. Water movement in the most restrictive layer is moderately high. Available water to a depth of 60 inches is high. Shrink-swell potential is low. This soil is occasionally flooded. It is not ponded. A seasonal zone of water saturation is at 6 inches during January, February, March, April, November, December. Organic matter content in the surface horizon is about 2 percent. Nonirrigated land capability classification is 3w. This soil does not meet hydric criteria.

Map unit: GeB - Georgeville silt loam, 2 to 6 percent slopes

Component: Georgeville (85%)

The Georgeville component makes up 85 percent of the map unit. Slopes are 2 to 6 percent. This component is on interfluvies, piedmonts. The parent material consists of residuum weathered from metavolcanics and/or residuum weathered from metasedimentary rock and/or residuum weathered from slate. Depth to a root restrictive layer is greater than 60 inches. The natural drainage class is well drained. Water movement in the most restrictive layer is moderately high. Available water to a depth of 60 inches is high. Shrink-swell potential is low. This soil is not flooded. It is not ponded. There is no zone of water saturation within a depth of 72 inches. Organic matter content in the surface horizon is about 1 percent. Nonirrigated land capability classification is 2e. This soil does not meet hydric criteria.

Map unit: GeC - Georgeville silt loam, 6 to 10 percent slopes

Component: Georgeville (100%)

The Georgeville component makes up 100 percent of the map unit. Slopes are 6 to 10 percent. This component is on hillslopes on uplands. The parent material consists of clayey residuum weathered from slate. Depth to a root restrictive layer is greater than 60 inches. The natural drainage class is well drained. Water movement in the most restrictive layer is moderately high. Available water to a depth of 60 inches is high. Shrink-swell potential is low. This soil is not flooded. It is not ponded. There is no zone of water saturation within a depth of 72 inches. Organic matter content in the surface horizon is about 1 percent. Nonirrigated land capability classification is 3e. This soil does not meet hydric criteria.

Map unit: KrB - Kirksey loam, 2 to 6 percent slopes

Component: Kirksey (100%)

The Kirksey component makes up 100 percent of the map unit. Slopes are 2 to 6 percent. This component is on hillslopes on uplands. The parent material consists of fine-silty residuum weathered from slate. Depth to a root restrictive layer 41 inches, bedrock, paralithic,. The natural drainage class is moderately well drained. Water movement in the most restrictive layer is moderately high. Available water to a depth of 60 inches is moderate. Shrink-swell potential is low. This soil is not flooded. It is not ponded. A seasonal zone of water saturation is at 18 inches during January, February, March, December. Organic matter content in the surface horizon is about 1 percent. Nonirrigated land capability classification is 2e. This soil does not meet hydric criteria.

Richland County, South Carolina

[Minor map unit components are excluded from this report]

Map unit NaE - Nason complex, 10 to 30 percent slopes

Component: Nason (100%)

The Nason component makes up 100 percent of the map unit. Slopes are 10 to 30 percent. This component is on hillslopes on uplands. The parent material consists of clayey residuum weathered from slate. Depth to a root restrictive layer, bedrock, paralithic, is 40 to 60 inches. The natural drainage class is well drained. Water movement in the most restrictive layer is moderately high. Available water to a depth of 60 inches is moderate. Shrink-swell potential is moderate. This soil is not flooded. It is not ponded. There is no zone of water saturation within a depth of 72 inches. Organic matter content in the surface horizon is about 2 percent. Nonirrigated land capability classification is 4e. This soil does not meet hydric criteria.

Map unit StA - State sandy loam, 0 to 2 percent slopes

Component: Wickham (100%)

The Wickham component makes up 100 percent of the map unit. Slopes are 0 to 2 percent. This component is on coastal plains, stream terraces. The parent material consists of loamy fluviomarine deposits. Depth to a root restrictive layer is greater than 60 inches. The natural drainage class is well drained. Water movement in the most restrictive layer is moderately high. Available water to a depth of 60 inches is high. Shrink-swell potential is low. This soil is not flooded. It is not ponded. There is no zone of water saturation within a depth of 72 inches. Organic matter content in the surface horizon is about 1 percent. Nonirrigated land capability classification is 1. This soil does not meet hydric criteria.