

# 4507 MILLS PLACE, SUITE G & H ATLANTA, GA 30336

Industrial Property For Lease  
4,142± to 12,040± SF Warehouse Space

**BRIAN BRATTON, SIOR**

Senior Vice President  
404.942.2028  
bbratton@kingindustrial.com

**STEVE RATCHFORD, SIOR, CCIM**

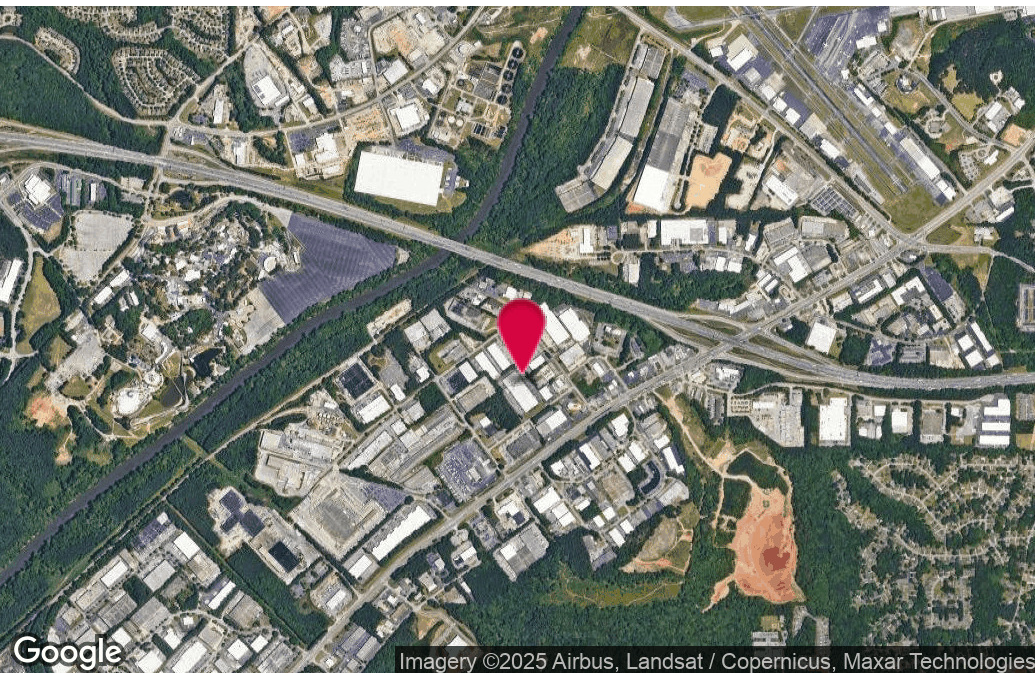
Senior Vice President  
404.942.2003  
sratchford@kingindustrial.com



Industrial • Commercial • Investment  
404.942.2000 | [kingindustrial.com](http://kingindustrial.com)



FOR LEASE  
4,142± TO  
12,040± SF



Imagery ©2025 Airbus, Landsat / Copernicus, Maxar Technologies

### PROPERTY HIGHLIGHTS

- Make-Ready Work will be Completed in Q4
- White Box Warehouse, Full Office Renovation
- 1,000± SF Office Space with 3 Dock Doors
- Sprinklered
- 18' Clear Height
- Column Space 33'x40'
- Truck Court 100' Deep
- Fenced Truck Court

### OFFERING SUMMARY

Available SF:	4,142 - 12,040 SF
Building Size:	104,092 SF
Zoning:	M2

#### BRIAN BRATTON, SIOR

Senior Vice President

404.942.2028

bbratton@kingindustrial.com

#### STEVE RATCHFORD, SIOR, CCIM

Senior Vice President

404.942.2003

sratchford@kingindustrial.com

Every effort has been made to provide accurate information, but no liability is assumed for errors or omissions.



# ADDITIONAL PHOTOS



## BRIAN BRATTON, SIOR

Senior Vice President

404.942.2028

bbratton@kingindustrial.com

## STEVE RATCHFORD, SIOR, CCIM

Senior Vice President

404.942.2003

sratchford@kingindustrial.com

*Every effort has been made to provide accurate information, but no liability is assumed for errors or omissions.*

CORFAC  
INTERNATIONAL

**King** Industrial  
Realty, Inc.  **Faropoint**

Industrial • Commercial • Investment  
404.942.2000 | kingindustrial.com



# FRONT OF SUITE H



**BRIAN BRATTON, SIOR**

Senior Vice President

404.942.2028

bbratton@kingindustrial.com

**STEVE RATCHFORD, SIOR, CCIM**

Senior Vice President

404.942.2003

sratchford@kingindustrial.com

*Every effort has been made to provide accurate information, but no liability is assumed for errors or omissions.*



# OVERHEAD VIEW



**BRIAN BRATTON, SIOR**

Senior Vice President

404.942.2028

bbratton@kingindustrial.com

**STEVE RATCHFORD, SIOR, CCIM**

Senior Vice President

404.942.2003

sratchford@kingindustrial.com

*Every effort has been made to provide accurate information, but no liability is assumed for errors or omissions.*

CORFAC  
INTERNATIONAL

**King**

Industrial  
Realty, Inc.



**Faropoint**

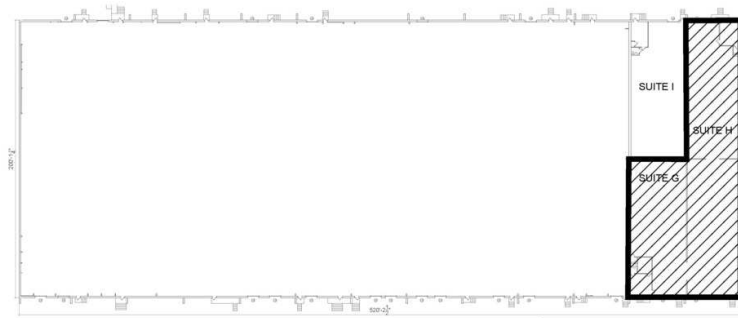
Industrial • Commercial • Investment

404.942.2000 | kingindustrial.com



# FLOOR PLAN SUITE G & H

## 4507 Mills Place - Suites G&H Atlanta GA 30336



Building Key Plan



### BRIAN BRATTON, SIOR

Senior Vice President

404.942.2028

bbratton@kingindustrial.com

### STEVE RATCHFORD, SIOR, CCIM

Senior Vice President

404.942.2003

sratchford@kingindustrial.com

Every effort has been made to provide accurate information, but no liability is assumed for errors or omissions.

**King**

Industrial  
Realty, Inc.



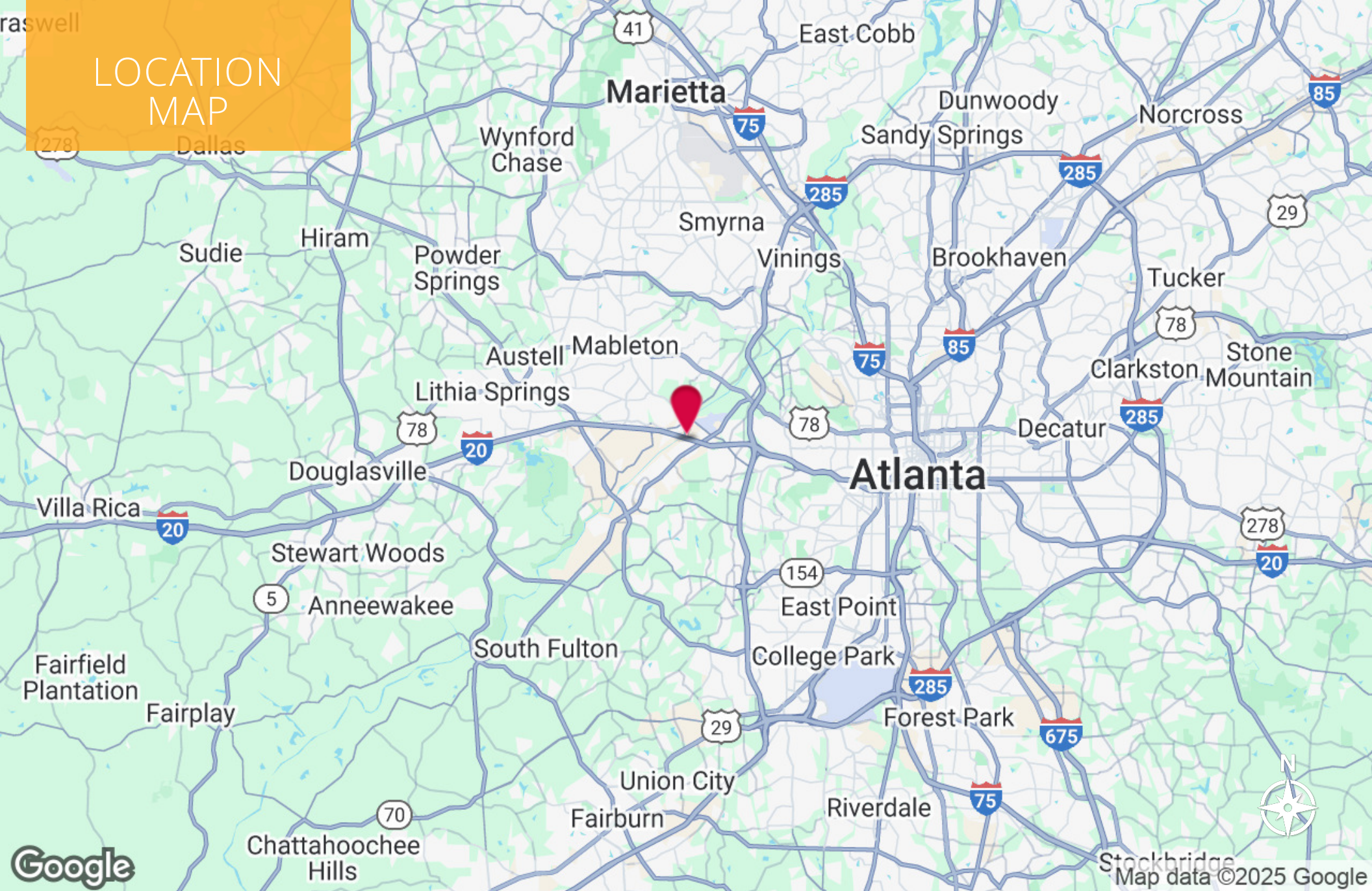
**Faropoint**

Industrial • Commercial • Investment  
404.942.2000 | kingindustrial.com

**CORFAC**  
INTERNATIONAL



# LOCATION MAP



## BRIAN BRATTON, SIOR

Senior Vice President

404.942.2028

bbratton@kingindustrial.com

## STEVE RATCHFORD, SIOR, CCIM

Senior Vice President

404.942.2003

sratchford@kingindustrial.com

Every effort has been made to provide accurate information, but no liability is assumed for errors or omissions.

CORFAC  
INTERNATIONAL

**king**

Industrial  
Realty, Inc.



**Faropoint**

Industrial • Commercial • Investment

404.942.2000 | kingindustrial.com