



# Flex / Warehouse

2401 28th Ave N Suite A, St. Petersburg, FL 33713

💰 Lease Rate: **\$16.00 NNN**

📏 Unit Size: **1,748 SF**

✅ Available: **Now**



**Jessy Coffey**

Commercial Real Estate Advisor

**(904) 525-4270** ☎

**Jessy@cprteam.com** ✉

# Highlights



650 SF Open Warehouse Space  
700+ SF Private Office  
~350 SF Upstairs Storage



16 FT Clear Height



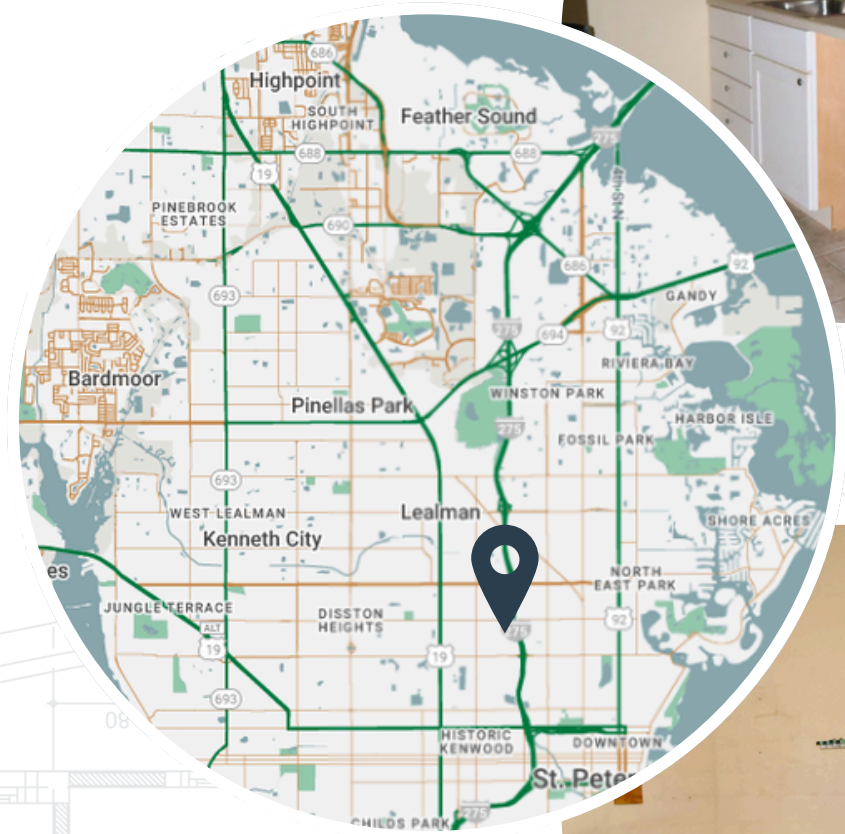
Full Bathroom and Dedicated  
Breakroom



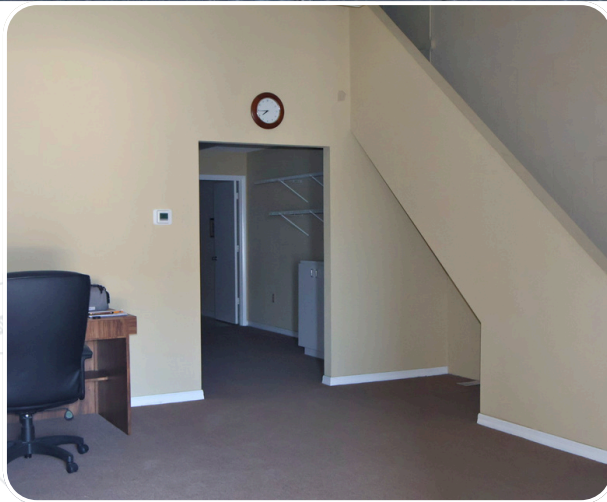
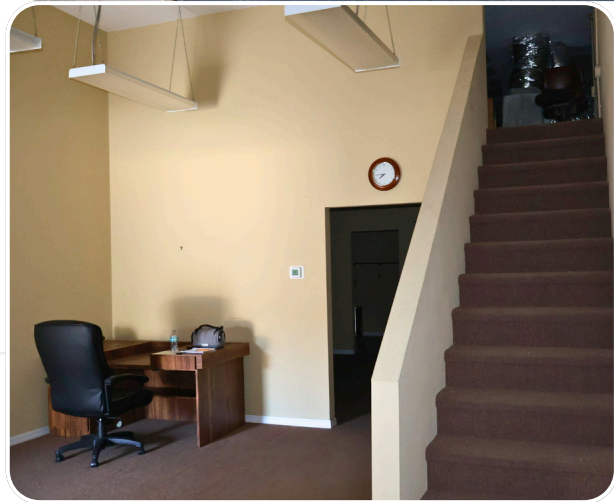
Industrial Zoning - Wide Range Of  
Contractor And Trade Uses



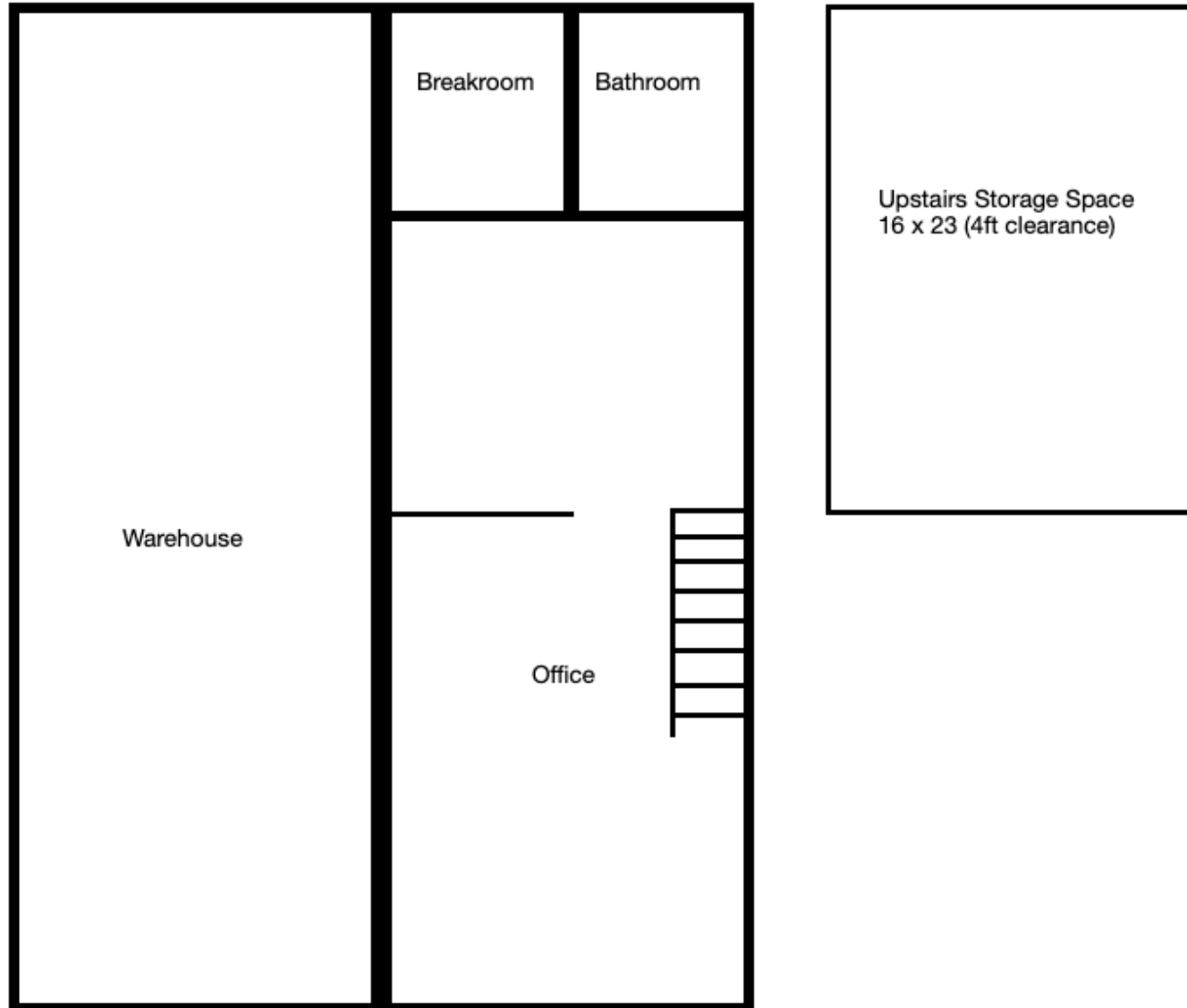
Prime location off 22nd Ave N near  
Lowe's and Home Depot



*Information herein is not warranted and subject to change without notice.  
We assume no liabilities for errors and omissions.*



# Floor Plan



# Listing Agent



## Jessy Coffey

Commercial Real Estate Advisor

☎ (904) 525-4270

✉ Jessy@cprteam.com

**Jessy Coffey specializes in St. Petersburg industrial real estate**, advising clients on warehouses, flex space, logistics facilities, and owner-user acquisitions. Originally from Northeast Florida, she relocated to St. Petersburg in 2015 to attend the University of South Florida–St. Petersburg and quickly developed a passion for the city's entrepreneurial spirit.

**Before entering commercial real estate, Jessy built her career in logistics**, giving her valuable insight into how industrial properties support business growth and operations.

She represents buyers, sellers, landlords, and tenants with a **business-first approach, helping clients make strategic real estate decisions while building lasting relationships.**

☎ 727-822-4715

🌐 [www.cprteam.com](http://www.cprteam.com)

🔗 [CommercialPartnersRealty](https://www.commercialpartnersrealty.com)