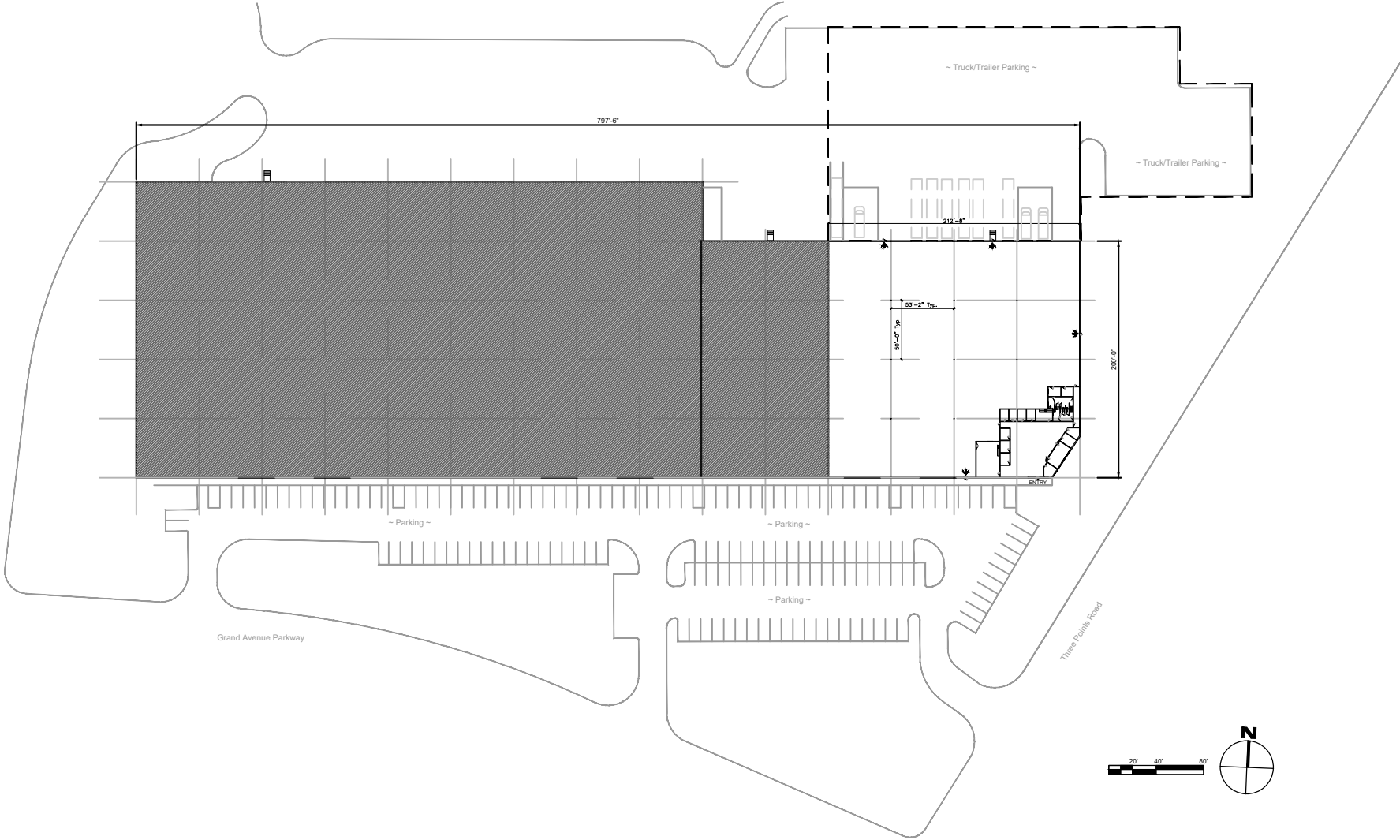


2120 GRAND AVENUE PWKY.
AUSTIN, TX 78728
SUITE 200

BUILDING FEATURES:

+/- 30'-0" CLEAR HEIGHT
FENCED AND SECURED TRUCK COURT
(7) OH DOCK DOORS
(3) RAMPS WITH OVERSIZED DOORS
ESFR SPRINKLERED

OFFICE: 4,631 SF
WAREHOUSE: 37,780 SF
TOTAL: 42,411 SF



LINK LOGISTICS

NOT FOR
REGULATORY
APPROVAL,
PERMITTING OR
CONSTRUCTION
Jun 24, 2025

HOLDER +SOUTHWICK ARCHITECTS

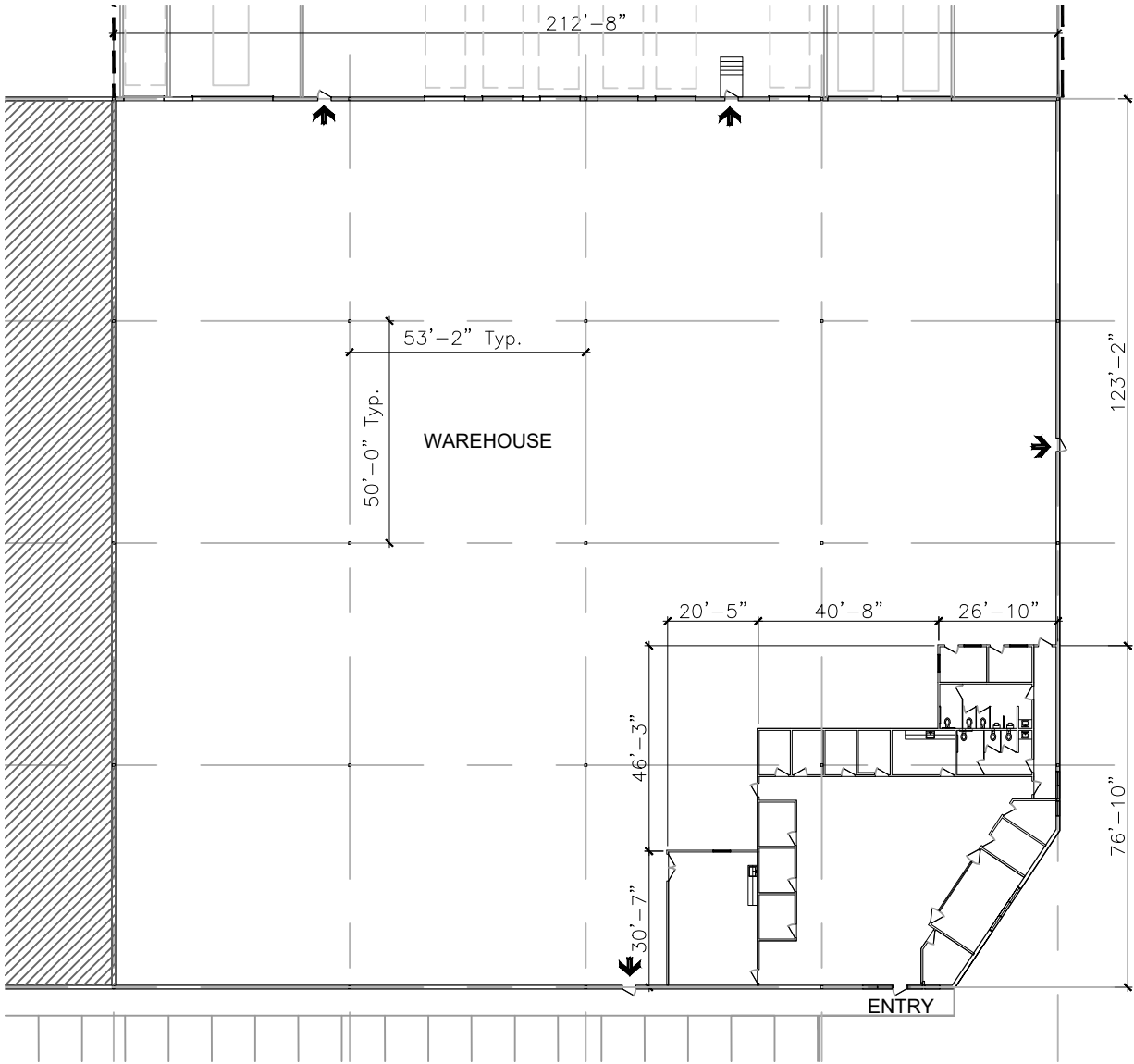
H+S

2120 GRAND AVENUE PWKY.
AUSTIN, TX 78728
SUITE 200

BUILDING FEATURES:

- +/- 30'-0" CLEAR HEIGHT
- FENCED AND SECURED TRUCK COURT
- (7) OH DOCK DOORS
- (3) RAMPS WITH OVERSIZED DOORS
- ESFR SPRINKLERED

OFFICE: 4,631 SF
WAREHOUSE: 37,780 SF
TOTAL: 42,411 SF



LINK LOGISTICS

NOT FOR
REGULATORY
APPROVAL,
PERMITTING OR
CONSTRUCTION
Jun 24, 2025

HOLDER +SOUTHWICK ARCHITECTS

H+S

2120 GRAND AVENUE PWKY.
AUSTIN, TX 78728
SUITE 200

BUILDING FEATURES:
+/- 30'-0" CLEAR HEIGHT
FENCED AND SECURED TRUCK COURT
(7) OH DOCK DOORS
(3) RAMPS WITH OVERSIZED DOORS
ESFR SPRINKLERED

OFFICE: 4,631 SF
WAREHOUSE: 37,780 SF
TOTAL: 42,411 SF



LINK LOGISTICS

NOT FOR
REGULATORY
APPROVAL,
PERMITTING OR
CONSTRUCTION
Jun 24, 2025

HOLDER +SOUTHWICK ARCHITECTS

