



## 1141 W LORI LANE | KAMAS, UTAH

Retail, Restaurant Space Available for Lease

**JORDANELLE** 1141 W LORI LANE | KAMAS, UTAH

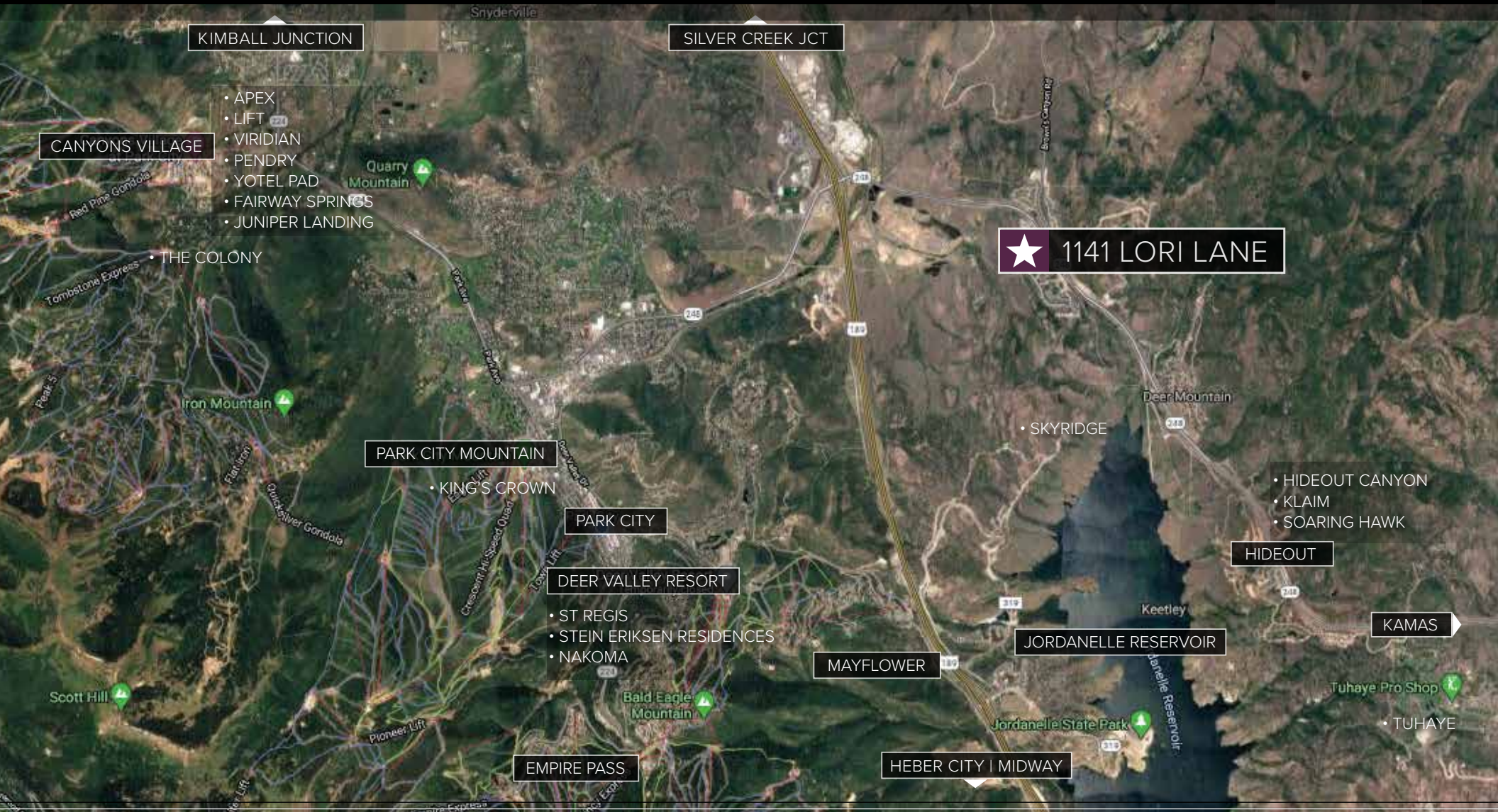
**NOW LEASING | \$34/SF/YR NNN**

1141 W Lori Lane is a **land lease or a build to suit property**. This is prime commercial retail, restaurant site available for lease. This property is one mile east of Park City in the center of Wasatch County's rapid development. Poised to serve the growing commercial demand of Park City, Hideout, and Kamas communities. This site has drive-thru restaurant potential. Shadow anchored by Park East Village Mixed-use center. Estimated delivery in 2026. Contact list agent for info.

- 1.02 ACRES
- LEASE TERMS ARE NEGOTIABLE
- TRIP GENERATION 1,682 CARS/DAY

# LOCATION

JORDANELLE 1141 W LORI LANE | KAMAS, UTAH





## JORDANELLE

1141 LORI LANE  
KAMAS, UTAH

- Now Leasing.
- 1.02 Acres.
- Term Negotiable.
- Trip generation 1,682 cars per day.
- Drive through restaurant potential.
- The landlord is willing to entertain opportunities based on the use and strength of the tenant.

i

PCMLS 12002605  
CALL FOR MORE INFORMATION



TRAVIS PARTNERS



JOHN TRAVIS  
435 640-2972  
john@travispartnersutah.com  
www.bhhsutah.com/agent/john-travis

**BERKSHIRE  
HATHAWAY** | UTAH  
HOMESERVICES | PROPERTIES

COMMERCIAL DIVISION