

APOPKA 429



222,520 - 1,199,374 SF
AVAILABLE FOR LEASE

NEW DEVELOPMENT COMPLETED DECEMBER 2023

FOUNDRY
COMMERCIAL

WPT
CAPITAL ADVISORS

23M PEOPLE CAN BE REACHED WITHIN 5 HOURS



429 • APOPKA 429

REGIONAL MAP DRIVE TIMES

100 MILE BELTWAY LOOP CONNECTING ORLANDO COMPLETE WITH 429 CONNECTION

APOPKA
429



IMMEDIATE LOCAL ACCESS TO MAJOR ROADWAYS



MAJOR NEARBY TENANTS & LABOR STATS



DEMOGRAPHICS

	1 HOUR	2 HOURS	4 HOURS
POPULATION	3,400,467	8,742,364	20,033,735
HOUSEHOLDS	1,294,938	3,449,528	8,010,254
AVG. HOUSEHOLD INCOME	\$110,386	\$107,234	\$110,906
BUSINESSES	136,690	338,771	913,680
EMPLOYEES	1,420,100	3,497,176	8,497,119

LABOR STATS

WITHIN 5 MILES OF SITE



23.3%
SKILLED
WORKFORCE

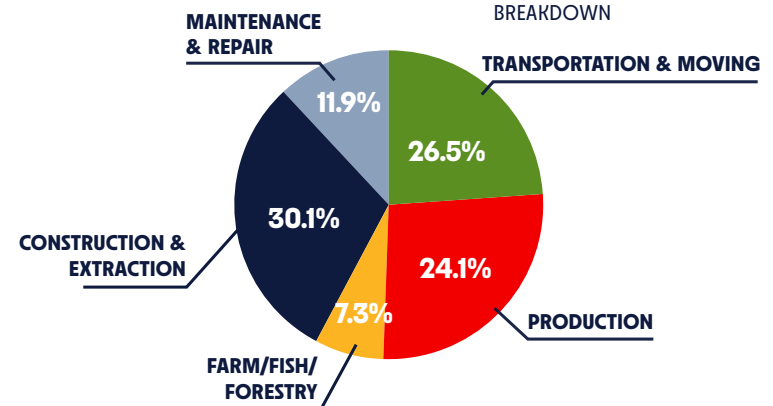


11,371
TOTAL
EMPLOYEES



2.41%
POPULATION
GROWTH

SKILLED WORKFORCE
BREAKDOWN



PARK HIGHLIGHTS

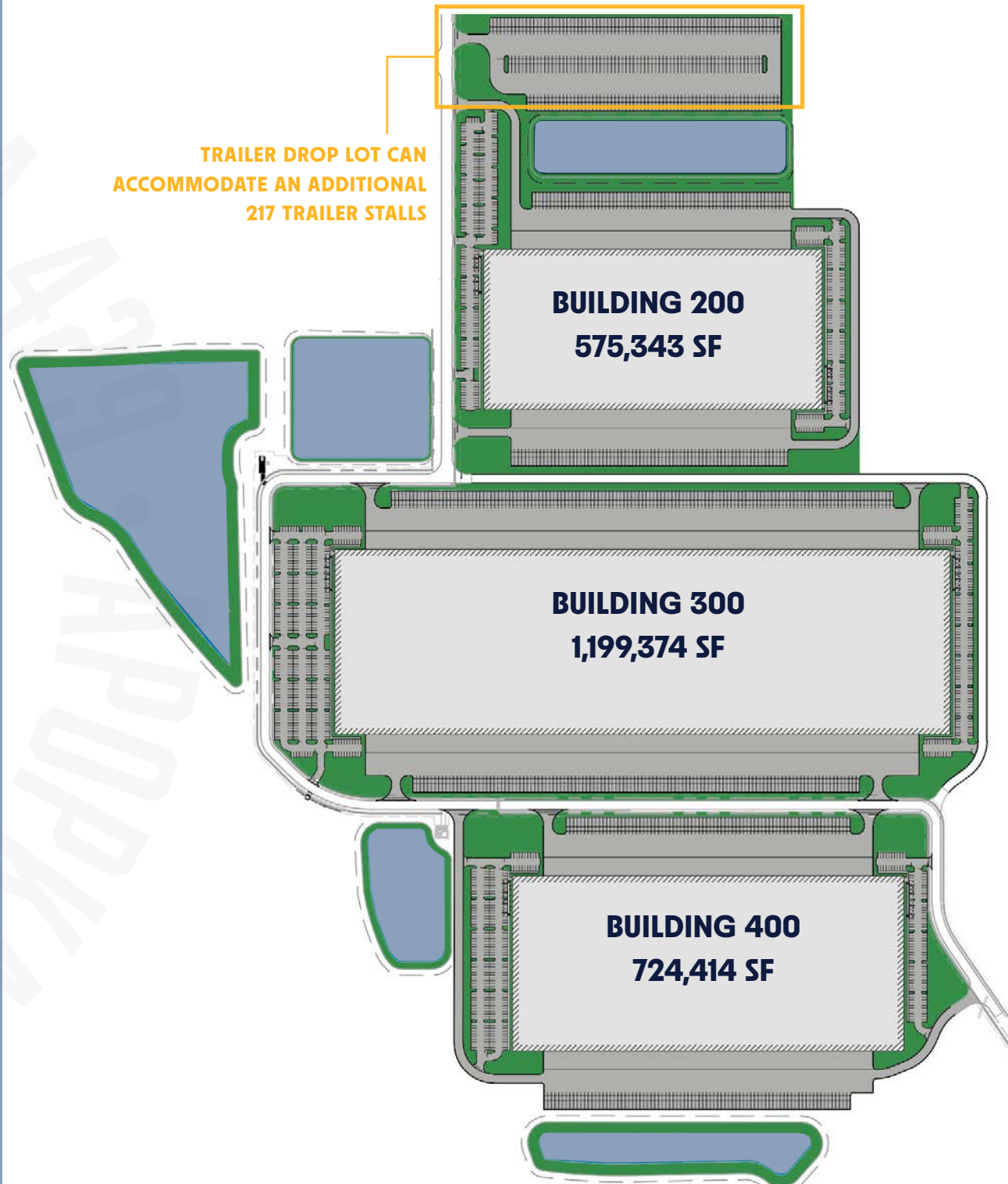
- Speed to occupancy - Class A spec offices and dock doors equipped with levelers; move-in ready today!
- \$250M capital invested into project
- Most flexible industrial park in Florida from 220K - 2.5M SF
- Mile-long walking path and views for tenant employees
- Incentive firm - Maxis Advisors to provide help with incentive negotiation, compliance, labor analysis
- Full park circulation with 2 lighted access points

BUILDING OVERVIEW

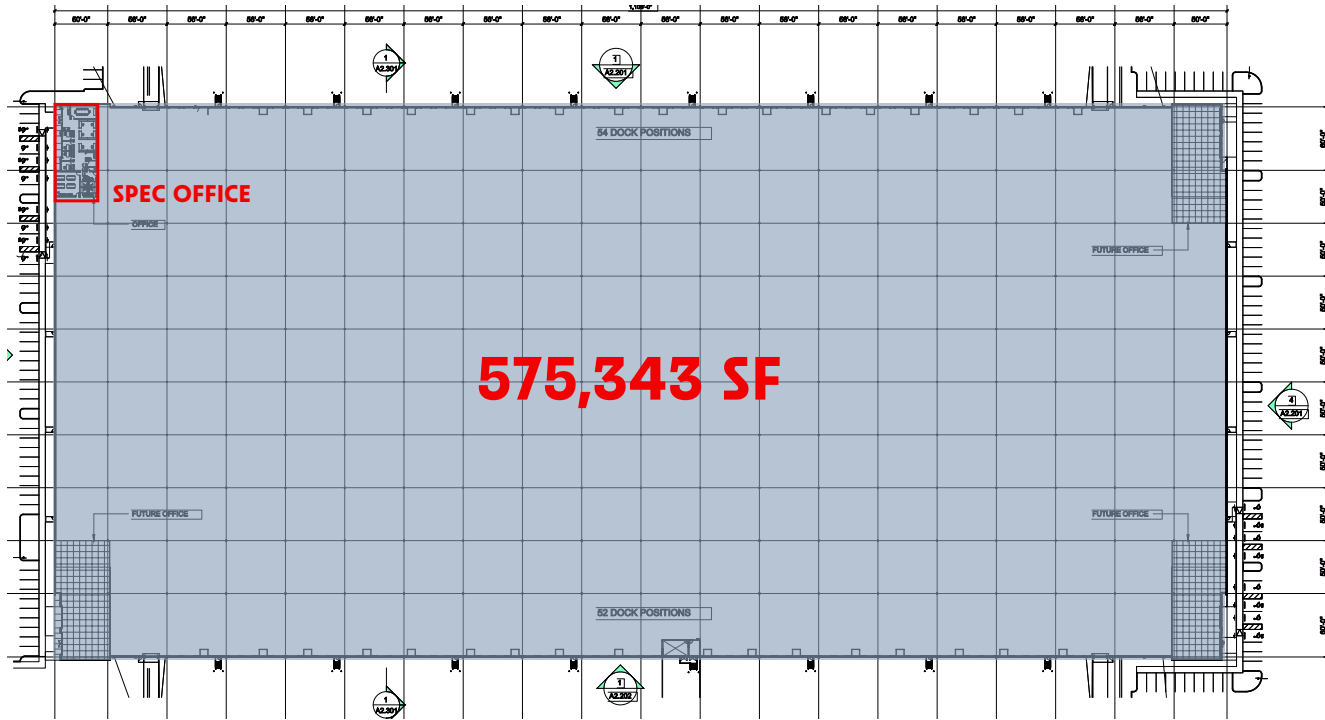
- 36' - 40' clear heights
- LEED Silver Certified 
- Rail access for Bldg 200
- ESFR Sprinklers
- LED Lighting
- Cross Dock / Front Loading
- Energy & Water monitoring program

APOPKA
429

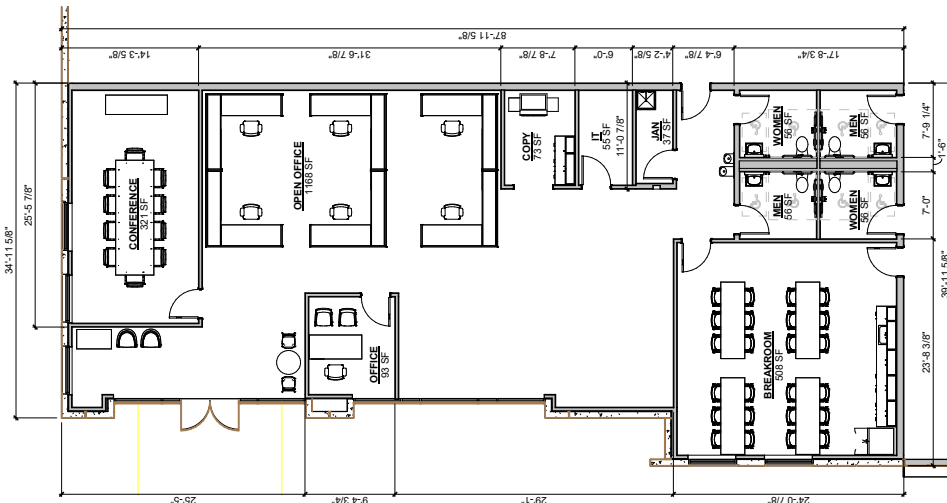
TRAILER DROP LOT CAN
ACCOMMODATE AN ADDITIONAL
217 TRAILER STALLS



BUILDING 200



EXISTING CLASS A SPEC OFFICE

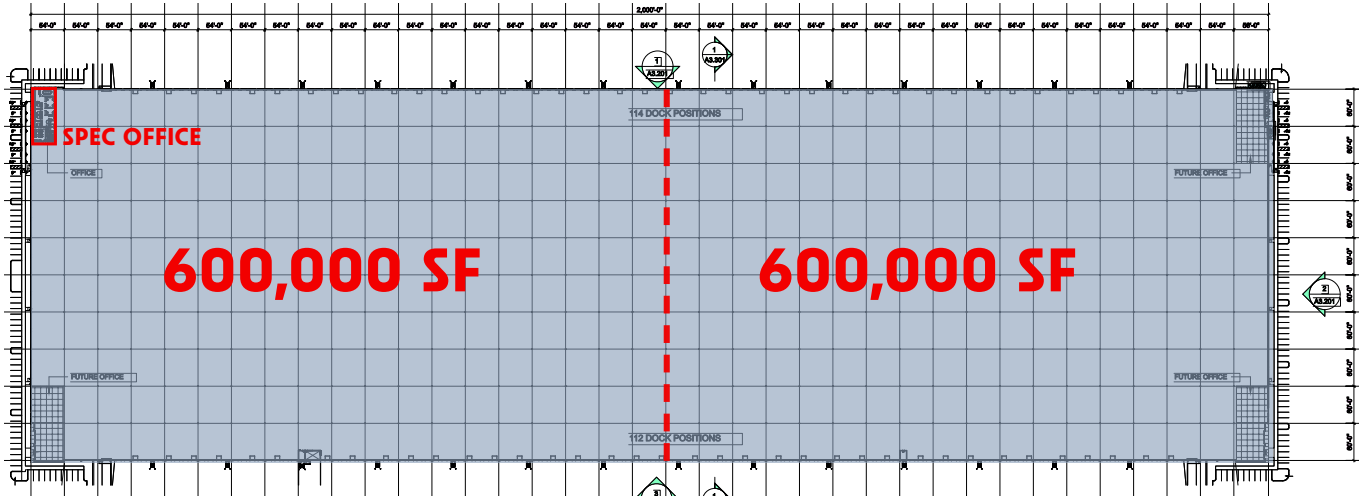


BUILDING 200

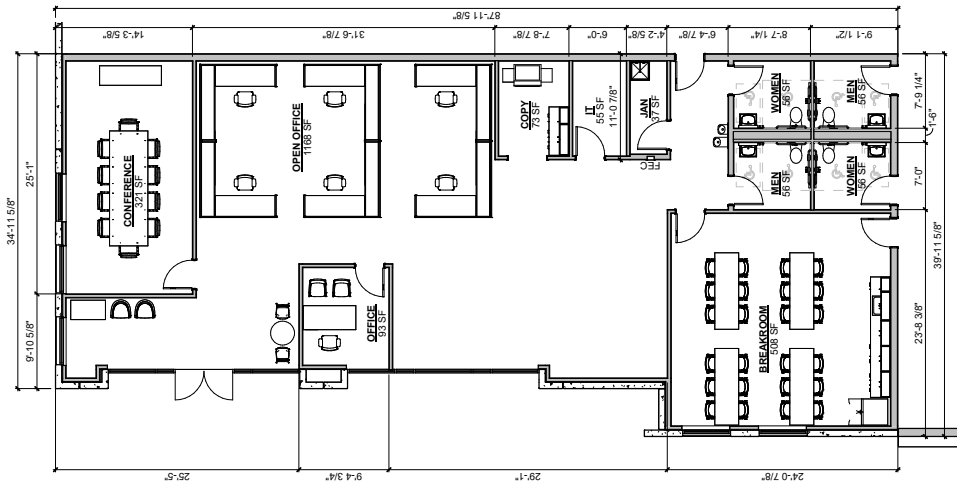
TOTAL SF:	575,343 SF
EXISTING CLASS A OFFICE:	3,088 SF
CLEAR:	36'
DOCK DOORS:	106 (9'x10')
DRIVE-IN DOORS:	4 (12'x14')
LOADING:	Cross Dock
BUILDING DEPTH:	520'
COLUMN SPACING:	56' x 60'
CONSTRUCTION:	Tilt Wall
PARKING SPACES:	396
TRAILER PARKING:	141 Spaces
TRUCK COURT:	185'
RAIL SERVED:	Possible
OVERFLOW TRAILER PARKING/DROPS:	217 Spaces
ADDRESS:	4701 Apopka Logistics Pkwy

AKA 429
429 • AP

BUILDING 300



EXISTING
CLASS A
SPEC OFFICE



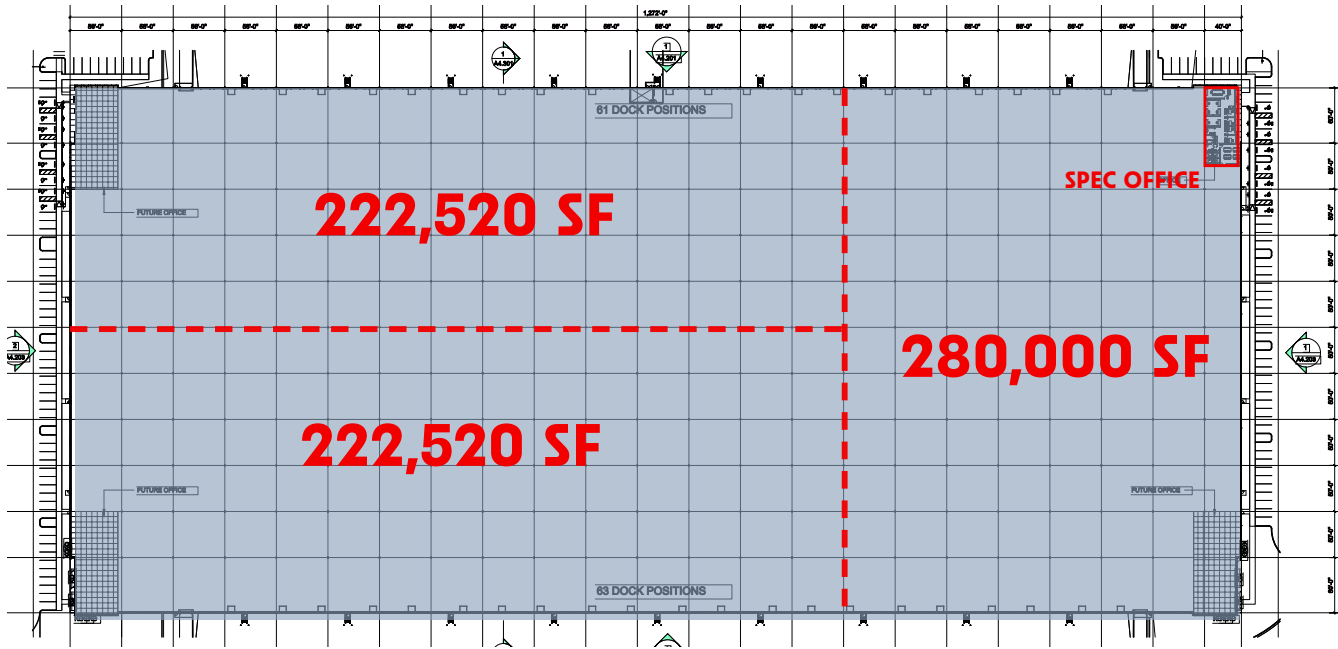
BUILDING 300

TOTAL SF:	600,000 - 1,199,374 SF
EXISTING CLASS A OFFICE:	3,088 SF
CLEAR:	40'
DOCK DOORS:	226 (9'x10')
DRIVE-IN DOORS:	4 (12'x14')
LOADING:	Cross Dock
BUILDING DEPTH:	600'
COLUMN SPACING:	54' x 60'
CONSTRUCTION:	Tilt Wall
PARKING SPACES:	604
TRAILER PARKING:	250 Spaces
TRUCK COURT:	190'
OVERFLOW TRAILER PARKING/DROPS:	217 Spaces
ADDRESS:	4661 Apolka Logistics Pkwy

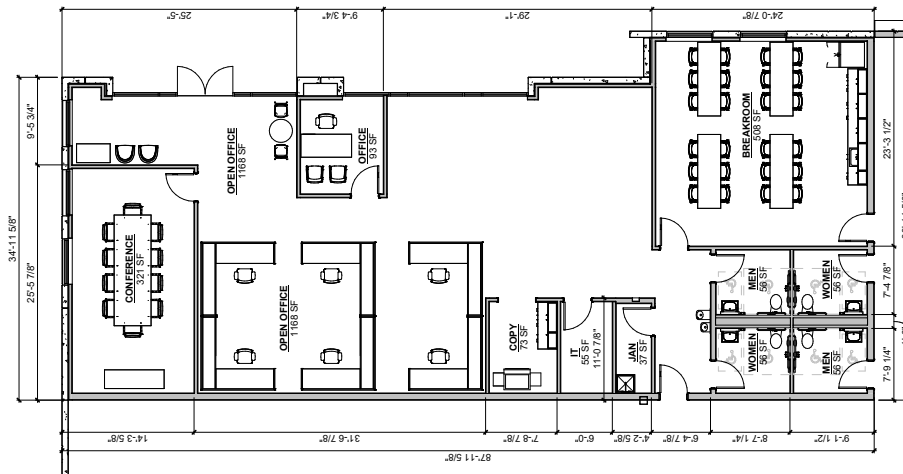
APOLKA 429 • APOLKA 429

BUILDING 400

BUILDING 400



EXISTING CLASS A SPEC OFFICE



TOTAL SF:	222,520 - 724,414 SF
EXISTING CLASS A OFFICE:	3,088 SF
CLEAR:	40'
DOCK DOORS:	124 (9'x10')
DRIVE-IN DOORS:	4 (12'x14')
LOADING:	Cross Dock
BUILDING DEPTH:	570'
COLUMN SPACING:	56' x 50'
CONSTRUCTION:	Tilt Wall
PARKING SPACES:	369
TRAILER PARKING:	156 Spaces
TRUCK COURT:	190'
OVERFLOW TRAILER PARKING/DROPS:	217 Spaces
ADDRESS:	4600 Apopka Logistics Pkwy

APOPKA 429 • AP



429 • АРОПКА 429 • АРОПКА 429 • АРОПКА 429 • АРОПКА 429

APOPKA 429



SCAN FOR MORE INFO

JUSTIN RUBY, SIOR, CCIM

justin.ruby@foundrycommercial.com

407.865.0311

JOEY WOODMAN

joey.woodman@foundrycommercial.com

407.748.5888

TRAVIS HAMMOND

travis.hammond@foundrycommercial.com

407.401.1707

FOUNDRY
COMMERCIAL

WPT
CAPITAL ADVISORS

APOPKA 429 • APOPKA 429 • APOPKA 429