

INDUSTRIAL PROPERTY FOR LEASE

25,000+/- SF Available



3864 Centerville Highway, Snellville, GA 30039

OFFERING SUMMARY

Available SF: 25,000 SF
Zoning: M-1

PROPERTY HIGHLIGHTS

- 2,465+/- SF Office
- (2) 14' x 14' Drive In Doors
- (1) 12' x 14' Drive In Door
- 3 Phase Power
- 2 Crane Bridges (crane not included)
- 20-30 Parking Spaces or Outside Storage
- Column Spacing 20' x 20'-Center Rows, 38' to the Sides
- Additional 3,840+/- SF Available



For More Information Contact:

ANDREW JOHNSON

Associate Broker
404.942.2029
ajohnson@kingindustrial.com

JASON MCCART, SIOR

Senior Vice President
770.601.5451
jmccart@kingindustrial.com

INDUSTRIAL PROPERTY FOR LEASE

25,000+/- SF Available

3864 Centerville Highway, Snellville, GA 30039

KING Industrial
Realty, Inc.



For More Information Contact:

ANDREW JOHNSON

Associate Broker

404.942.2029

ajohnson@kingindustrial.com

JASON MCCART, SIOR

Senior Vice President

770.601.5451

jmccart@kingindustrial.com

INDUSTRIAL PROPERTY FOR LEASE

25,000+/- SF Available

3864 Centerville Highway, Snellville, GA 30039

KING Industrial
Realty, Inc.



For More Information Contact:

ANDREW JOHNSON

Associate Broker

404.942.2029

ajohnson@kingindustrial.com

JASON MCCART, SIOR

Senior Vice President

770.601.5451

jmccart@kingindustrial.com

INDUSTRIAL PROPERTY FOR LEASE

25,000+/- SF Available

3864 Centerville Highway, Snellville, GA 30039



Area that is For Lease

For More Information Contact:

ANDREW JOHNSON

Associate Broker

404.942.2029

ajohnson@kingindustrial.com

JASON MCCART, SIOR

Senior Vice President

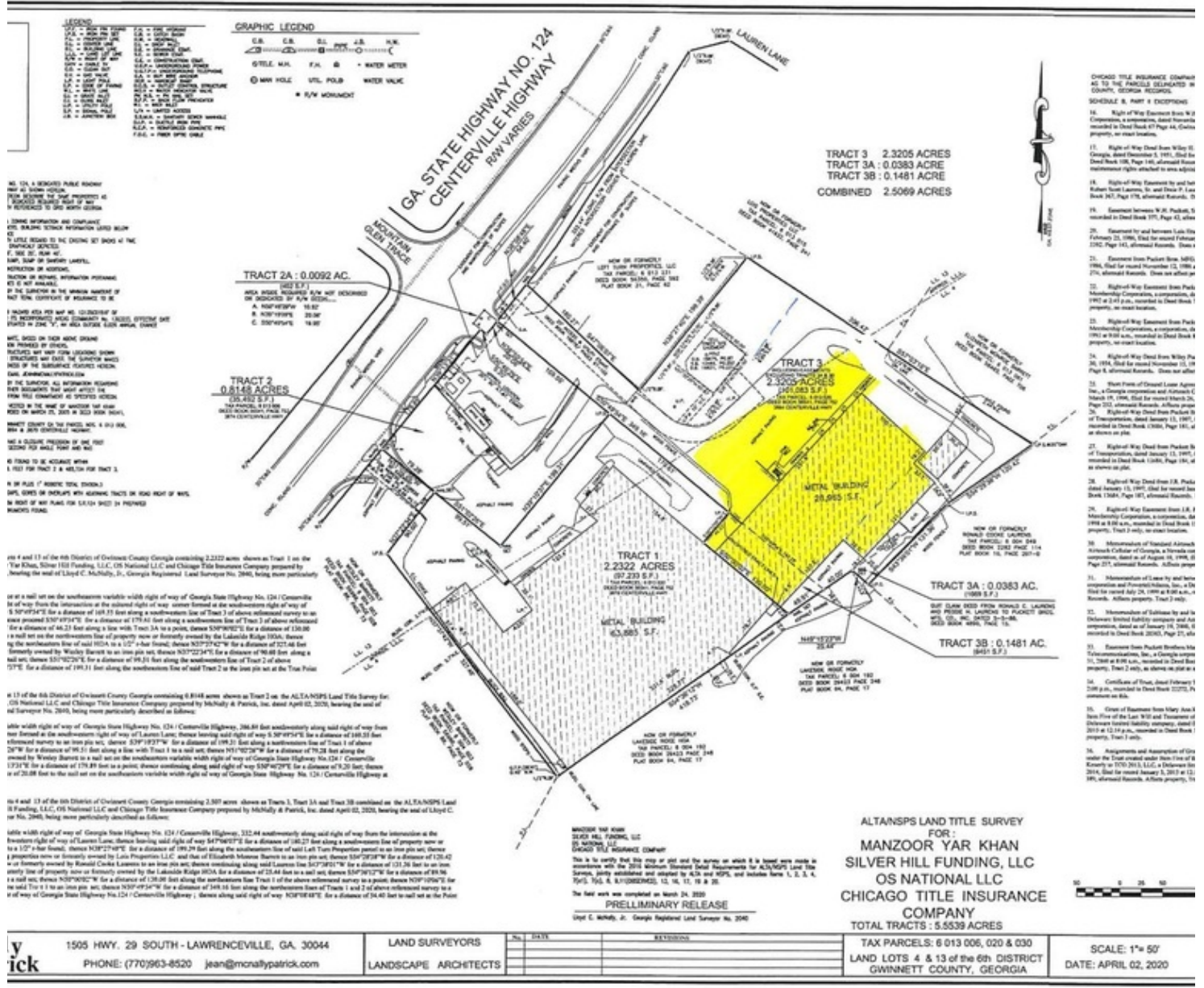
770.601.5451

jmccart@kingindustrial.com

INDUSTRIAL PROPERTY FOR LEASE

25,000+/- SF Available

3864 Centerville Highway, Snellville, GA 30039



TRACT 3 2.3205 ACRES
TRACT 3A : 0.0383 ACRE
TRACT 3B : 0.1481 ACRE
COMBINED 2.5069 ACRES

ALTANSPS LAND TITLE SURVEY
FOR:
MANZOOR YAR KHAN
SILVER HILL FUNDING, LLC
OS NATIONAL LLC
CHICAGO TITLE INSURANCE
COMPANY
TOTAL TRACTS : 5.5539 ACRES

TAX PARCELS: 6 013 006, 020 & 030
LAND LOTS 4 & 13 of the 6th DISTRICT
GWINNETT COUNTY, GEORGIA
SCALE: 1"= 50'
DATE: APRIL 02, 2020

1505 HWY. 29 SOUTH - LAWRENCEVILLE, GA. 30044
PHONE: (770)963-8520 Jean@mcnallypatrick.com

LAND SURVEYORS
LANDSCAPE ARCHITECTS

Survey

For More Information Contact:

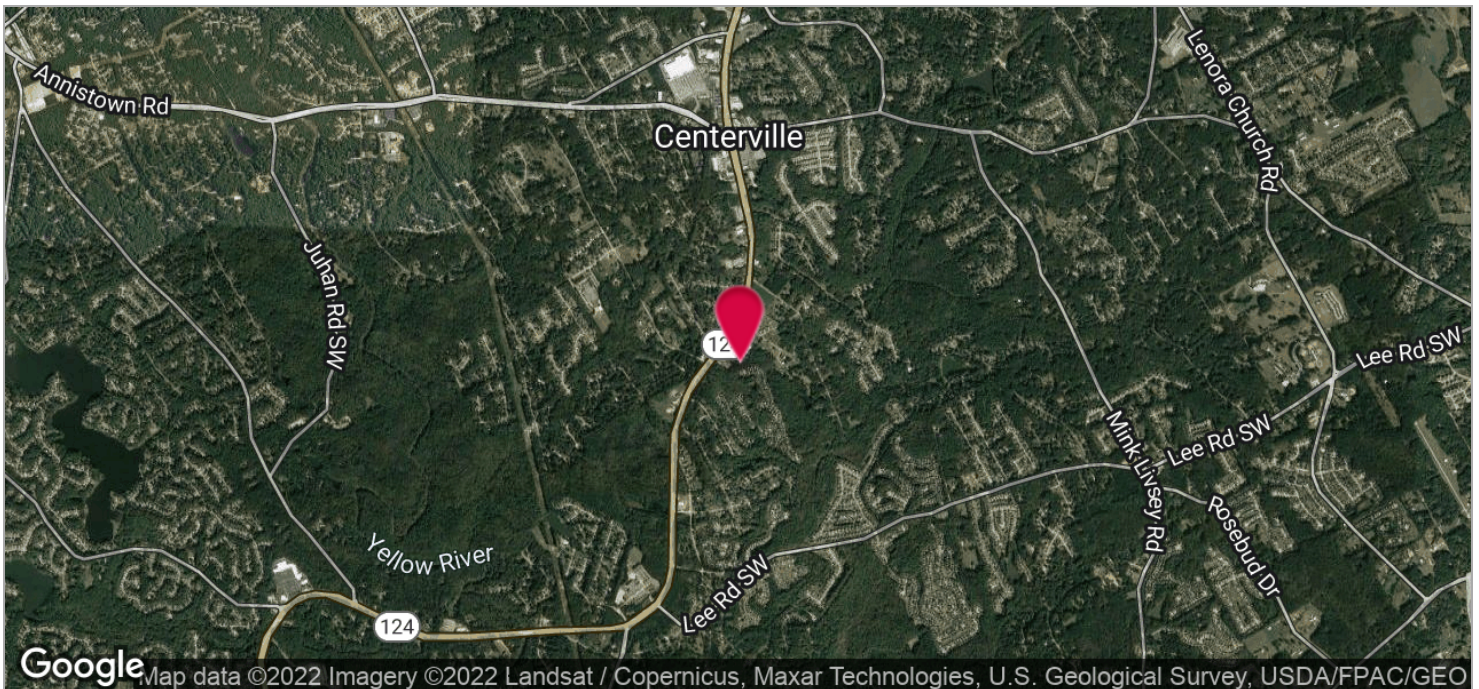
ANDREW JOHNSON Associate Broker 404.942.2029 ajohnson@kingindustrial.com
JASON MCCART, SIOR Senior Vice President 770.601.5451 jmccart@kingindustrial.com



INDUSTRIAL PROPERTY FOR LEASE

25,000+/- SF Available

3864 Centerville Highway, Snellville, GA 30039



For More Information Contact:

ANDREW JOHNSON

Associate Broker

404.942.2029

ajohnson@kingindustrial.com

JASON MCCART, SIOR

Senior Vice President

770.601.5451

jmccart@kingindustrial.com