

# For Lease

# 2720 N Ontario St Burbank | CA



Presented By:

Scott Cox  
818.244.3000

scott@pacwestonline.com  
DRE#01070703

Randy Rohrer  
818.244.3000

randy@pacwestonline.com  
DRE#00672287

Ron Rohrer  
818.309.0628

ron@pacwestonline.com  
DRE#01918399

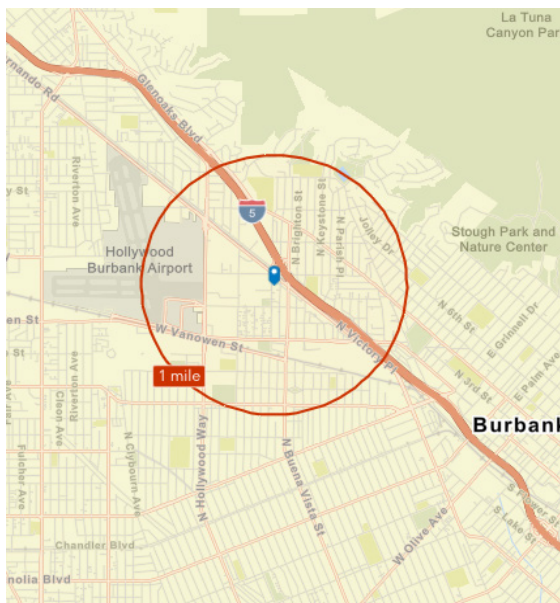
Christopher Rohrer  
818.624.1180

chris@pacwestonline.com  
DRE#02018754



# Property Information

|               |                     |                               |
|---------------|---------------------|-------------------------------|
| Available SF: | 2,630 SF            | › 12 Foot Clearance           |
| Asking Price: | \$6,445 (\$2.45/SF) | › 1 Ground Loading Doors      |
| Lease Type:   | Industrial Gross    | › Full HVAC                   |
| Power:        | 200 A; 480V; 3 Ph   | › Concrete Block Construction |
| Zoning:       | M-2                 | › Close to Burbank Airport    |
| Parking:      | 4                   | › Newly Renovated             |
| Built:        | 1976                | › Corner Lot                  |



20,238

Population



2.6

Average Household Size



39.8

Median Age

\$98,065

Median Household Income



7.6%

No High School Diploma



18.2%

High School Graduates



28.5%

Some College/ Associate's Degree



45.7%

Bachelor's/Graduate/ Prof Degree

## BUSINESS



1,124

Total Businesses



19,941

Total Employees

## EMPLOYMENT



74.6%

White Collar



Blue Collar



Services

10.8%

14.6%

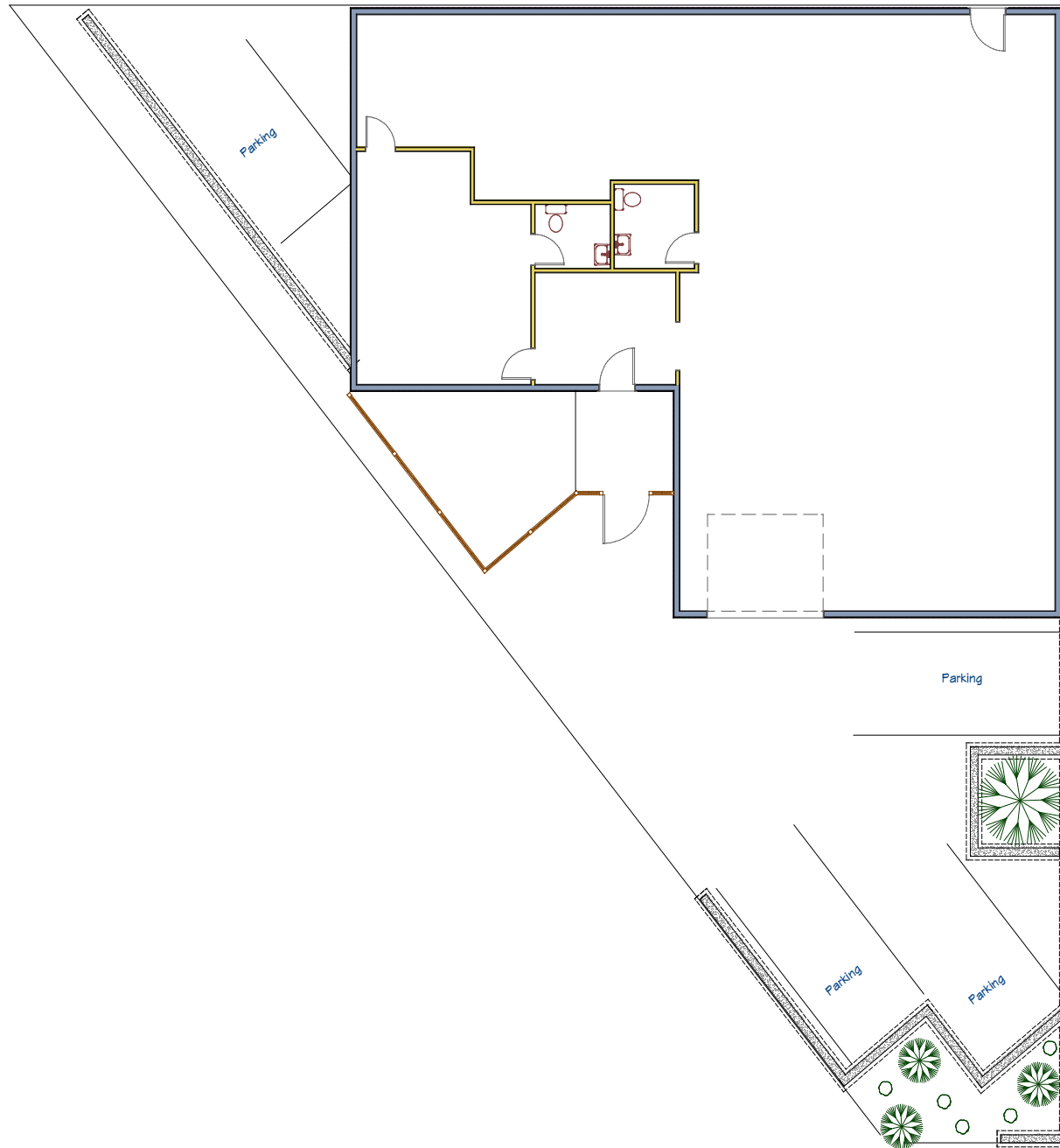


5.7%

Unemployment Rate

The facts contained herein, while not guaranteed as to accuracy, are accurate to the best of our knowledge and belief.

# Floor Plan



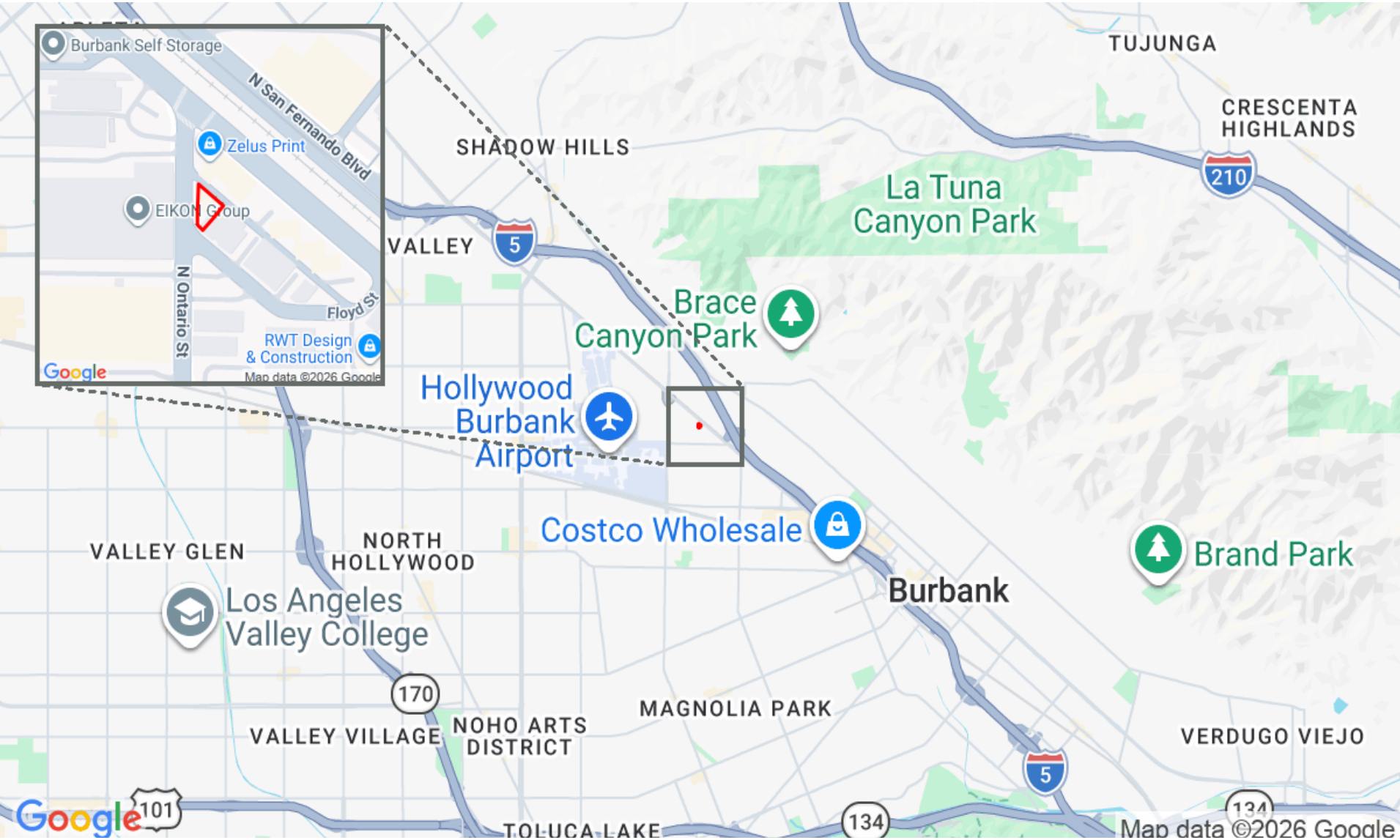
# Map Location



## 2720 N Ontario St

Pacific West Business Properties, Inc.

6624 San Fernando Road Glendale, CA 91201 | 818-244-3000



# Photos

