

Dania Beach Industrial Warehouse

1111 Old Griffin Road
Dania Beach, FL 33304

±15,000 SF Warehouse/Showroom Space Available for Lease



Industrial Opportunity just minutes from Airport and Port

Located at 1111 Old Griffin Road, Dania Beach, FL, 33304, this ±15,000 SF industrial warehouse offers an exceptional leasing opportunity in one of South Florida's most accessible industrial corridors. Easy access to I-95, Port Everglades, and Fort Lauderdale-Hollywood International Airport.

Take advantage of this strategic location and maximize your business operations in a high-demand market.

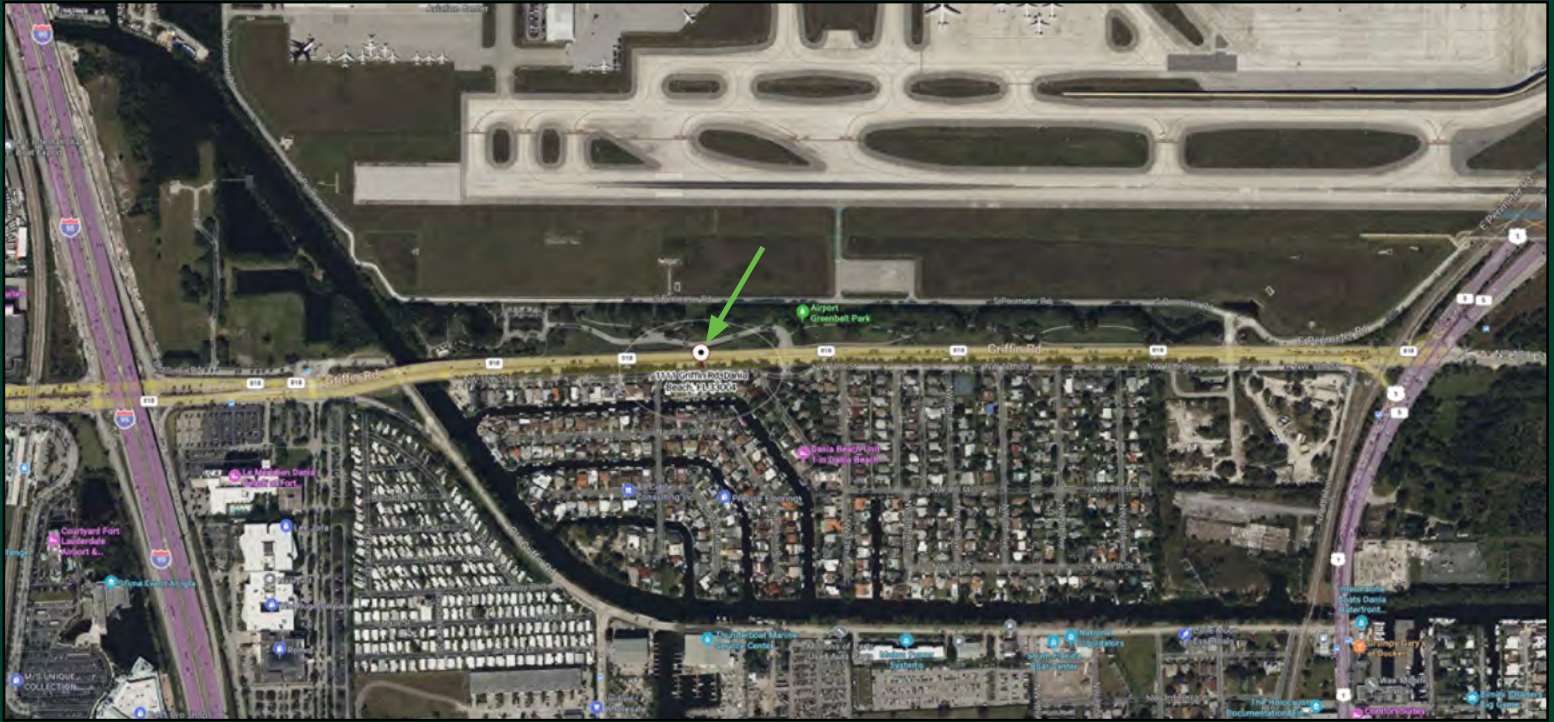
Property Highlights

- Ideal for distribution, logistics, or light manufacturing.
- 3 Loading Doors:
 - 1 oversized street-level door (30'x14')
 - 1 grade level door (10'x12')
 - 1 dock / truck well loading door
- 2,000 SF of office space on 2 floors
- Abundant front and back parking
- Endcap position
- 24' clear ceiling height
- **Rental rate \$15/SF NNN**

Dania Beach Industrial Warehouse

1111 Old Griffin Road | Dania Beach, FL 33304

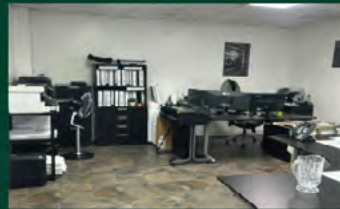
For Lease



Exterior Photos



Interior Photos



Contact Us



Helen Weissman
First Vice President
+1 954 394 4807
helen.weissman@cbre.com

© 2025 CBRE, Inc. All rights reserved. This information has been obtained from sources believed reliable, but has not been verified for accuracy or completeness. You should conduct a careful, independent investigation of the property and verify all information. Any reliance on this information is solely at your own risk. CBRE and the CBRE logo are service marks of CBRE, Inc. All other marks displayed on this document are the property of their respective owners, and the use of such logos does not imply any affiliation with or endorsement of CBRE. Photos herein are the property of their respective owners. Use of these images without the express written consent of the owner is prohibited.