

HOCKESSIN BUSINESS CENTER

Gordon Winegar

302.283.1800
gwinegar@dsmre.com

Ryan Bree

302.283.1800
rbree@dsmre.com

6300 LIMESTONE ROAD, HOCKESSIN, DE 19707

OFFICE/MEDICAL SPACE FOR LEASE



DSM
COMMERCIAL

3304 OLD CAPITOL TRAIL \ WILMINGTON, DE 19808 \ 302.283.1800 \ DSMRE.COM



PROPERTY DESCRIPTION

Ideally located space for your business at the Hockessin Business Center, where 2,000 to 4,000 square feet are available for lease. This prime office property is perfectly located near the intersection of Limestone Road and Valley Road, right across from the lively Lantana Square Shopping Center. Positioned between the vibrant communities of Hockessin and Pike Creek, it offers a fantastic opportunity for medical or general office use, ensuring convenience and high visibility for your business.

PROPERTY DETAILS

- **Available:** 2,000 - 4,000 SF (Suite A & B)
- **Lease Rate:** \$19.50/SF/NNN
- Prime location on Limestone Road
- Professional landscaping and curb appeal
- Ample parking for employees and visitors (34 parking spaces)
- Eye-catching signage opportunities

| DEMOGRAPHICS | 1 MILE | 3 MILES | 5 MILES |
|-------------------|-----------|-----------|-----------|
| Total Population | 4,876 | 37,406 | 97,029 |
| Total Households | 1,717 | 14,168 | 37,372 |
| Average HH Income | \$214,243 | \$191,768 | \$157,096 |
| Average Age | 45 | 45 | 44 |



For More Information, Contact:

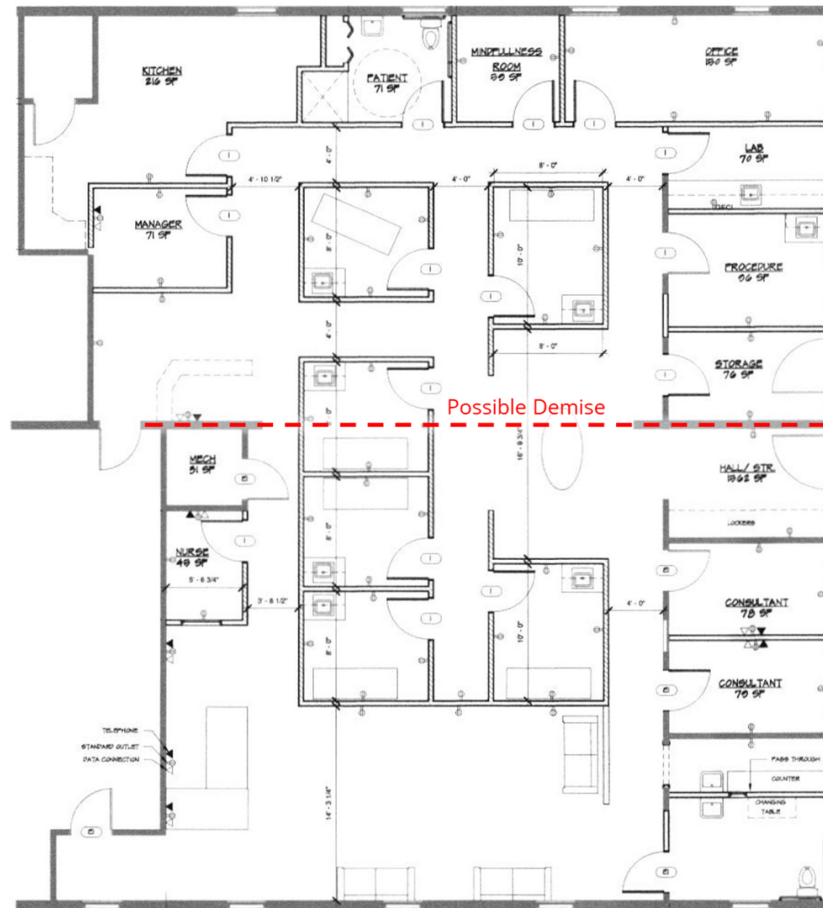
Gordon Winegar
gwinegar@dsmre.com
302.283.1800 Office
302.757.5353 Cell

Ryan Bree
rbree@dsmre.com
302.283.1800 Office
302.668.5430 Cell

DSM Commercial
Real Estate Services
3304 Old Capitol Trail
Wilmington, DE 19808
dsmre.com



Suite A-B Floor Plan



For More Information, Contact:

Gordon Winegar
gwinegar@dsmre.com
302.283.1800 Office
302.757.5353 Cell

Ryan Bree
rbree@dsmre.com
302.283.1800 Office
302.668.5430 Cell

DSM Commercial
Real Estate Services
3304 Old Capitol Trail
Wilmington, DE 19808
dsmre.com



GALLERY

Suite A & B Features:

- Reception and waiting area
- Two ADA-accessible common restrooms
- Lab room
- Breakroom
- Nine exam rooms (7 equipped with sinks)
- Three private offices



For More Information, Contact:

Gordon Winegar
gwinegar@dsmre.com
302.283.1800 Office
302.757.5353 Cell

Ryan Bree
rbree@dsmre.com
302.283.1800 Office
302.668.5430 Cell

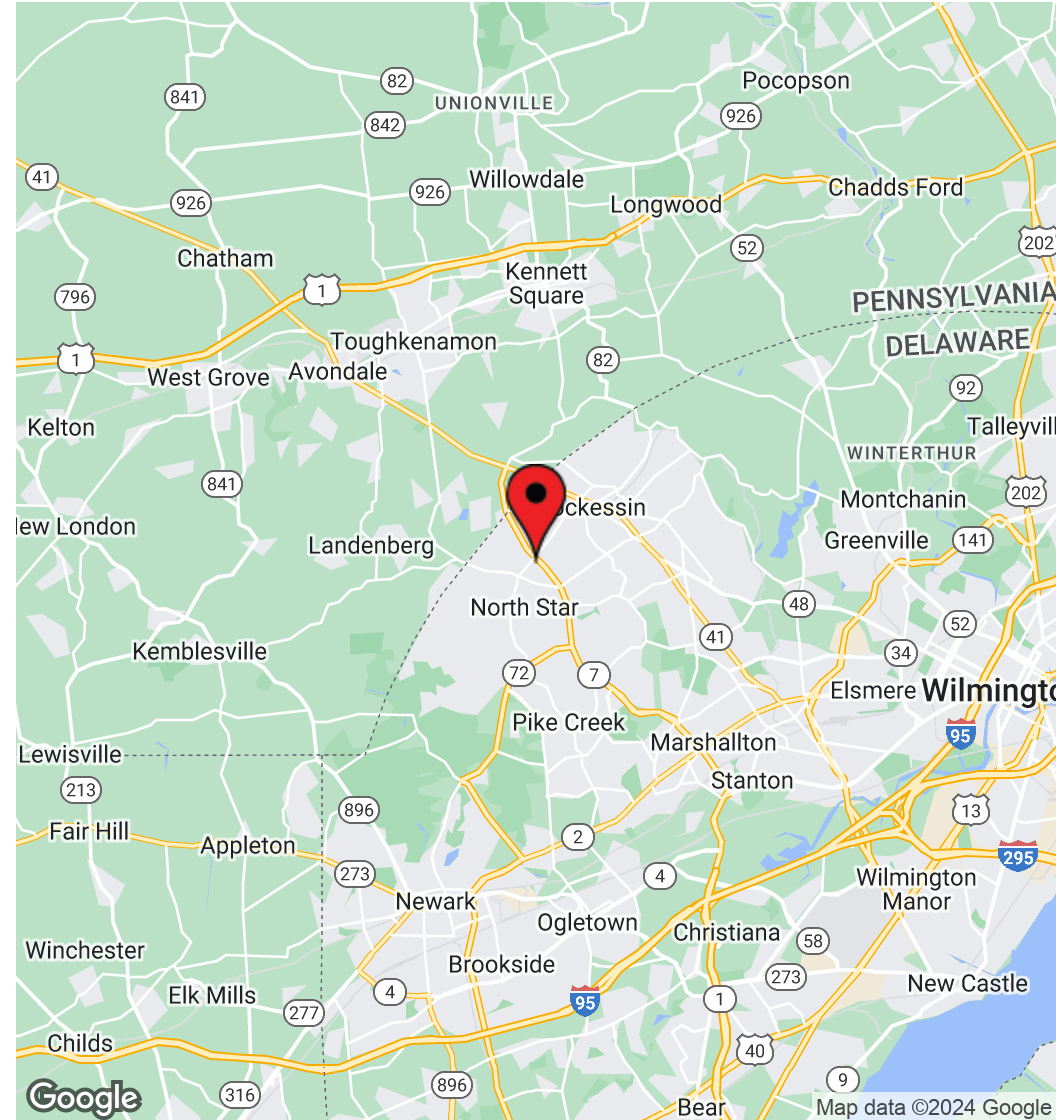
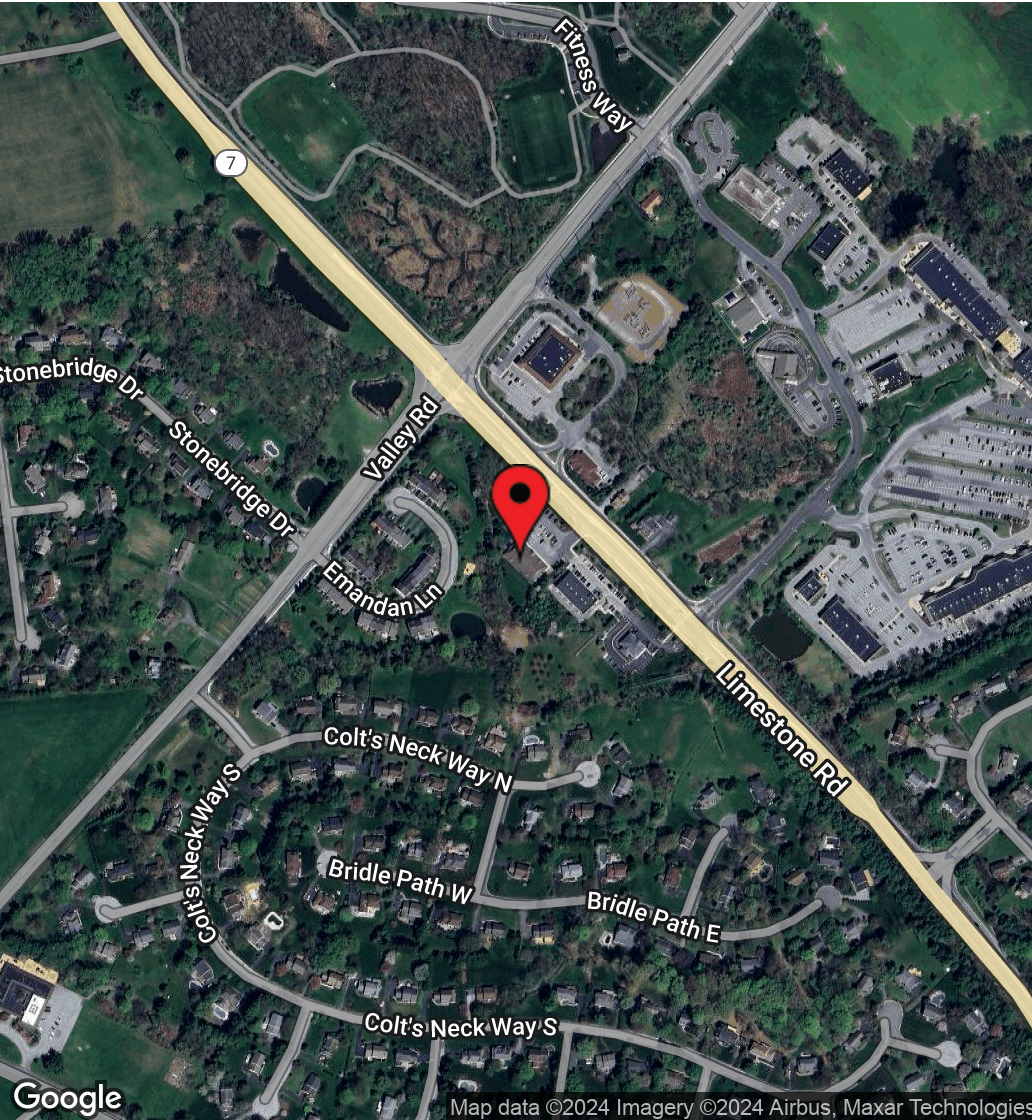
DSM Commercial
Real Estate Services
3304 Old Capitol Trail
Wilmington, DE 19808
dsmre.com



HOCKESSIN BUSINESS CENTER

6300 Limestone Road
Hockessin, DE 19707

OFFICE/MEDICAL SPACE FOR LEASE



For More Information, Contact:

Gordon Winegar
gwinegar@dsmre.com
302.283.1800 Office
302.757.5353 Cell

Ryan Bree
rbree@dsmre.com
302.283.1800 Office
302.668.5430 Cell

DSM Commercial
Real Estate Services
3304 Old Capitol Trail
Wilmington, DE 19808
dsmre.com