



7,653 SF Remaining

Join a Thriving Ecosystem of Tenants
in the Last Remaining Suites



About 1 Boland Drive

Situated just 3 miles from Downtown Montclair, 1 Boland Drive is a modern, conveniently located office building with ample space to fit your team's current and future needs. With the exits leading to I-280 directly adjacent to 1 Boland, the property is extremely commutable. Your team will find its easy access and abundant parking a major highlight, along with the generous amenities throughout.

Additional Highlights

- Executive garage covered parking
- Superior quality construction
- Strong ownership
- Park-like setting
- 1 Boland is the winner of the BOMA building of the year award

Building Specifications

- Total space: 122,863 SF
- Class A
- Land size: 7.74 acres
- Year built: 2002
- Year renovated: 2023
- Stories: 3 + Amenity level
- Parking ratio: 3.6 / 1,000 SF
- Parking spaces: 394
- Elevators: 3



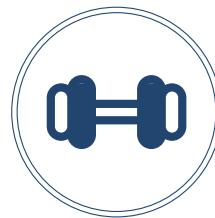


Capital Improvements, Completed 2024

- Redesigned café & dining area
- Redesigned fitness center
- Game room
- Golf simulator

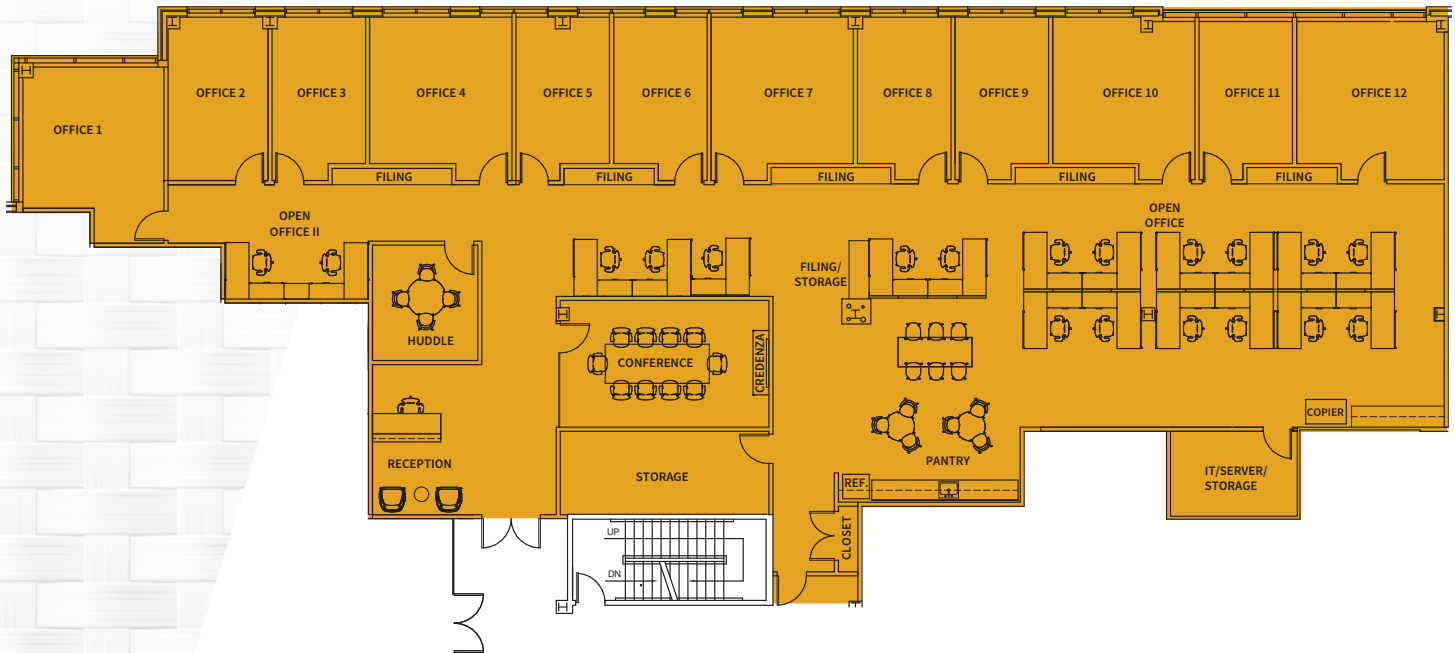
Current Amenities

- Fitness center
- Cafeteria
- Dining area
- Available storage
- 100% back-up generator power
- Abundant parking including an executive garage
- Onsite amphitheater
- ± 3 miles from Downtown Montclair



Spec Suite Test Fits

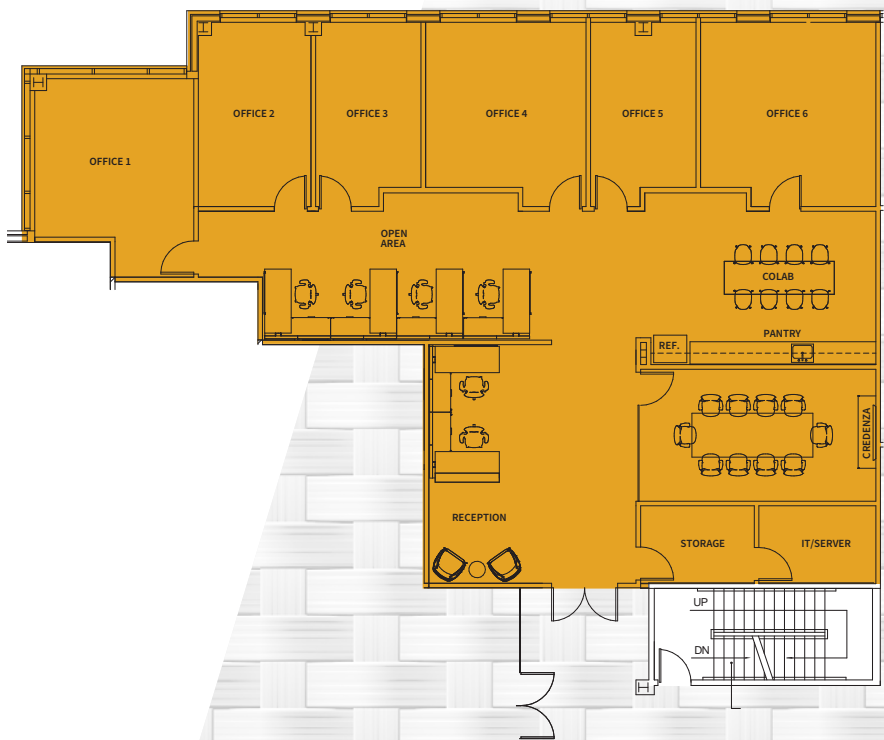
7,653 SF CONTIGUOUS

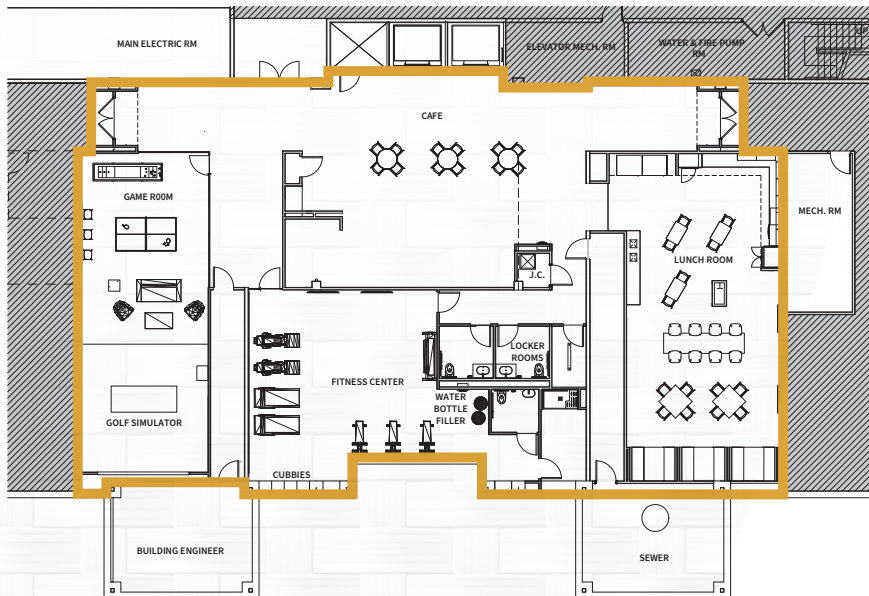


4,065 SF



3,596 SF

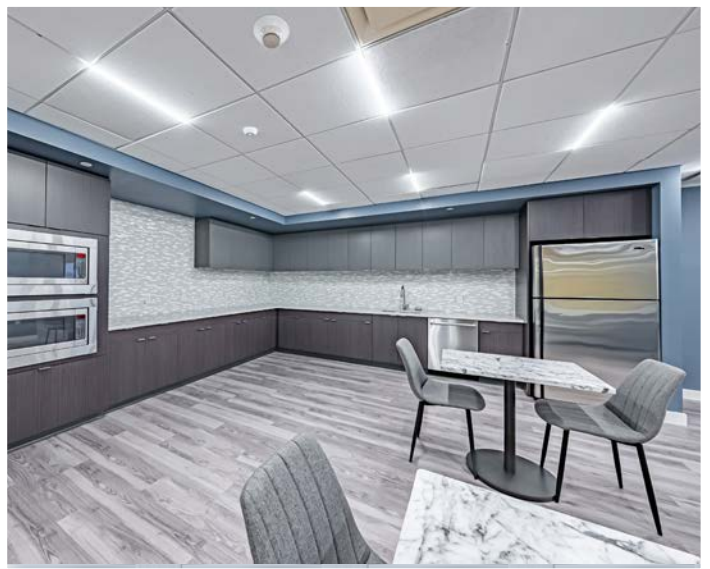




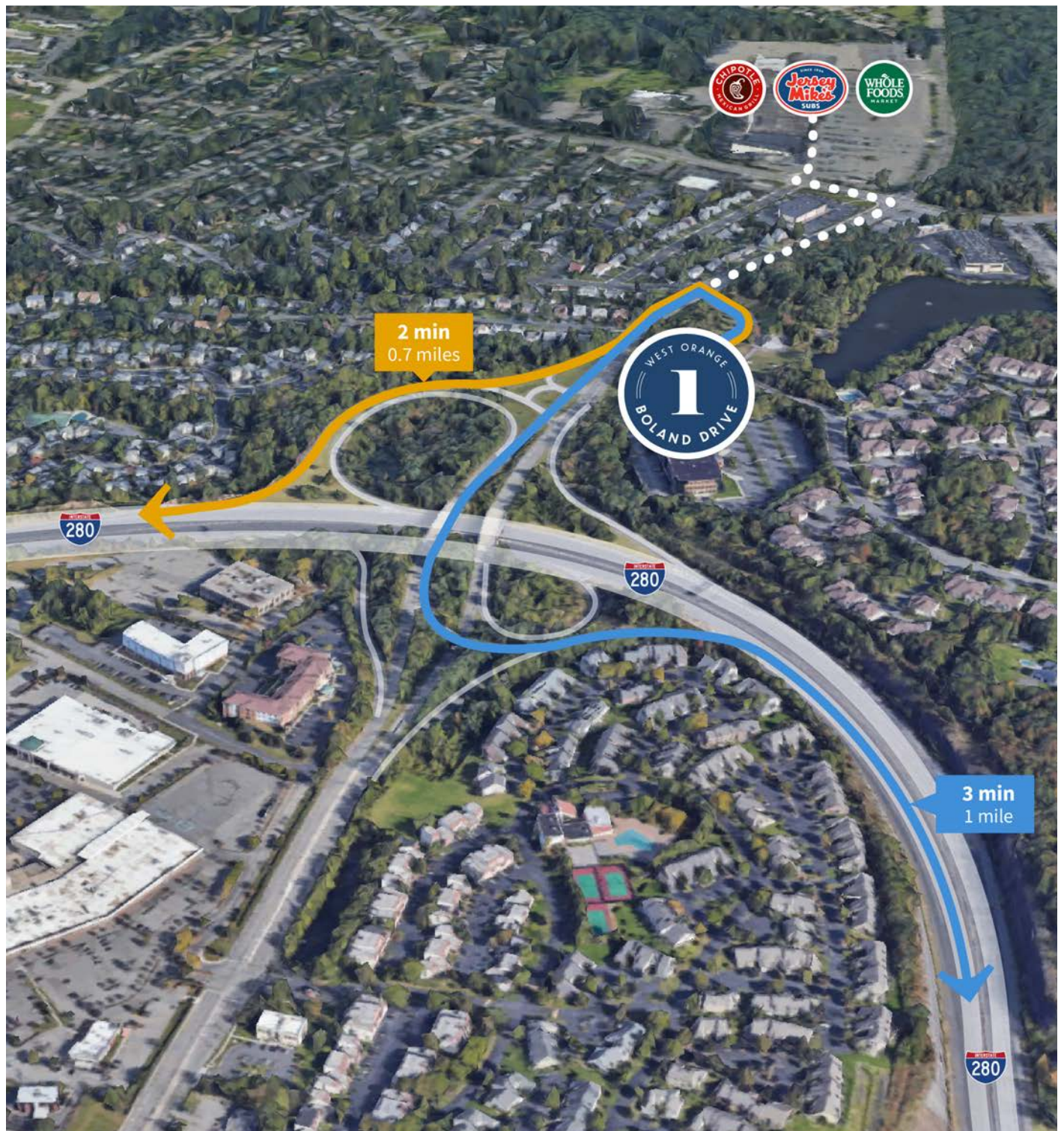
PARKING & AMENITY LEVEL

New amenities
completed 2024





Unmatched Access from I-280

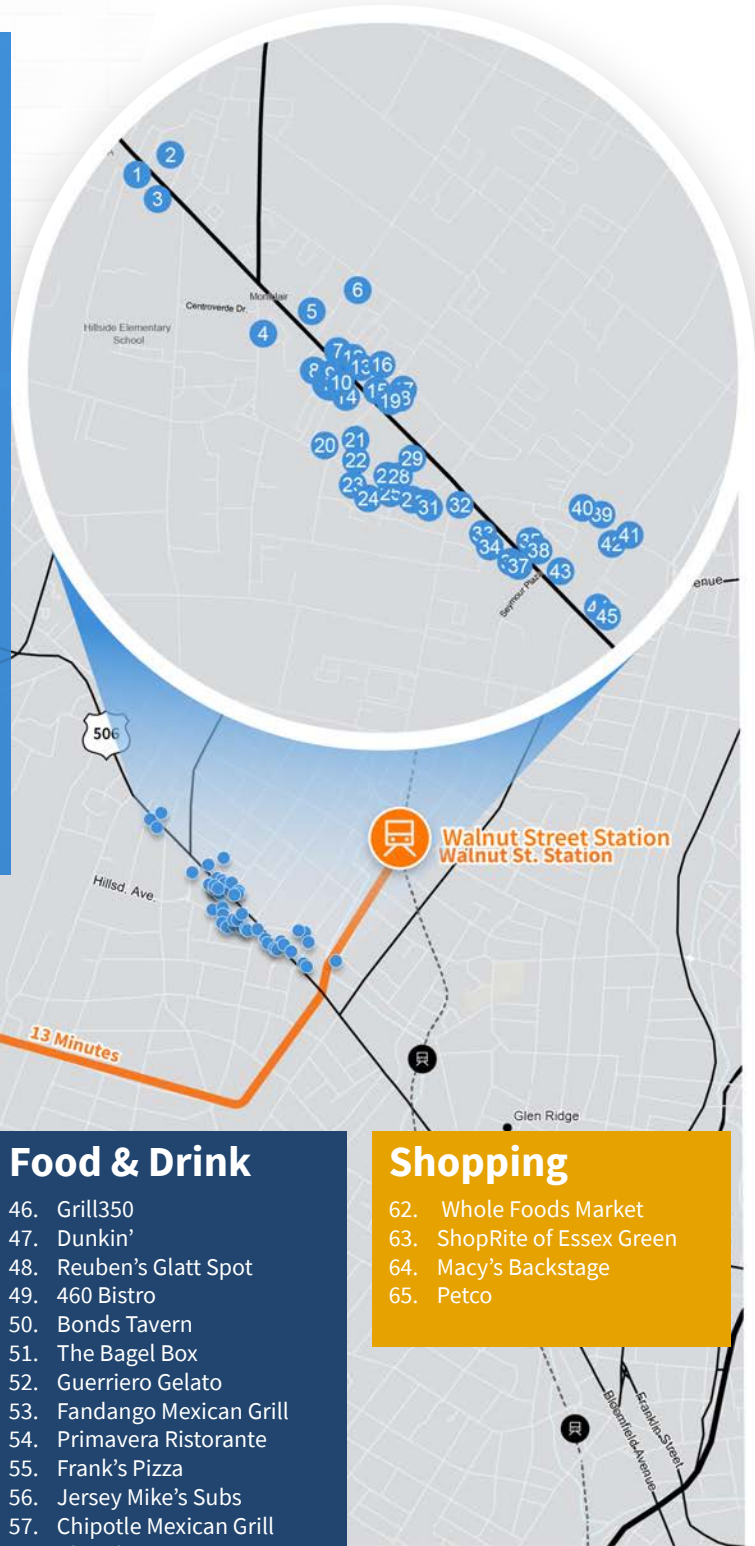




Abundant Amenities Nearby

Downtown Montclair

1. Jack's Seafood Shack
2. Whole Foods Market
3. Toast Montclair
4. Let's Yo! Montclair
5. Laboratorio Kitchen
6. La Rocca
7. Guerriero Gelato
8. Antika Grill
9. Royal Bagle & Deli
10. Fiamma Wood Fired Pizza
11. Fiammella Wood Fired Pizza & Italian Restaurant
12. Nori
13. Golden River Restaurant
14. Faubourg Restaurant and Bar
15. Sweet Kitchen
16. Mikki and Al's Noshery
17. Napoli Trattoria & Pizzeria
18. Samba Montclair
19. Efi's Gyro
20. Playa Bowls
21. Leone's
22. Java Love Coffee Bar
23. Cafè Giotto
24. Scala Del Nonna
25. Raymond's
26. Benvenuti Montclair
27. Jayce Baudry French Pastry
28. Fresco da Franco
29. Bareburger
30. Dutch's Sandwich Shop
31. Montclair House Grill
32. sweetgreen
33. Teglia Pizza Bar
34. Cuban Pete's
35. Trend Coffee & Tea House
36. Absolute Zero Ice Cream
37. LuLu's Artisanal Cafe
38. Aozora
39. Plum Bakery Gluten Free
40. The Maddox
41. Luigino's Parmigiana
42. La Fontaine Cafe
43. Sweet T's Southern Eatery
44. Tacoria
45. Mochinut Montclair



Food & Drink

46. Grill350
47. Dunkin'
48. Reuben's Glatt Spot
49. 460 Bistro
50. Bonds Tavern
51. The Bagel Box
52. Guerriero Gelato
53. Fandango Mexican Grill
54. Primavera Ristorante
55. Frank's Pizza
56. Jersey Mike's Subs
57. Chipotle Mexican Grill
58. Chit Chat Diner
59. Hook & Reel Cajun Seafood Restaurant & Bar
60. Kinya Ramen Sushi Bar
61. Panera Bread

Shopping

62. Whole Foods Market
63. ShopRite of Essex Green
64. Macy's Backstage
65. Petco

Regional Connectivity





For more information and to arrange a private tour

Colleen Maguire

+1 201 841 2021

colleen.maguire@jll.com

Jason Benson

+1 908 210 4010

jason.benson@jll.com

Alex Friedenberg

+1 908 531 0089

alex.friedenberg@jll.com



Although information has been obtained from sources deemed reliable, JLL does not make any guarantees, warranties or representations, express or implied, as to the completeness or accuracy as to the information contained herein. Any projections, opinions, assumptions or estimates used are for example only. There may be differences between projected and actual results, and those differences may be material. JLL does not accept any liability for any loss or damage suffered by any party resulting from reliance on this information. If the recipient of this information has signed a confidentiality agreement with JLL regarding this matter, this information is subject to the terms of that agreement. ©2025 Jones Lang LaSalle Brokerage, Inc. All rights reserved.