



+/- .69 ACRES FOR SALE ON LAMEY BRIDGE ROAD

11038 Lamey Bridge Rd, Diberville, MS 39540

MONTE LUFFEY • PRINCIPAL

OFFICE: 228.276.2700

MOBILE: 228.547.1953

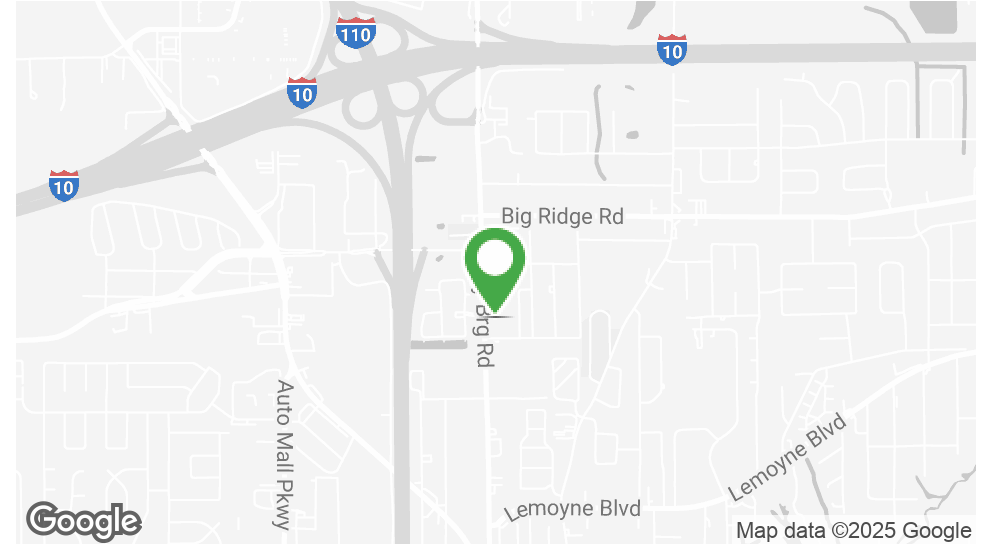
mluffey@southeastcre.com

FERNANDO PENAFIEL • ASSOCIATE

OFFICE: 228.276.2700

MOBILE: 228.236.5354

fpenafiel@southeastcre.com



PROPERTY DESCRIPTION

Southeast Commercial is thrilled to present our newest listing — +/- 0.69 acres on Lamey Bridge Road in D'Iberville. This prime site offers excellent visibility and is surrounded by key coastal landmarks including the Scarlet Pearl Casino and The Promenade shopping center. Conveniently located near I-10 and just minutes from the new D'Iberville Police and Fire Department, this property sits in the heart of a growing commercial corridor. With its ideal location and strong surrounding development, it offers incredible potential for your next business venture.

OFFERING SUMMARY

Sale Price:	\$529,000
Lot Size:	0.69 Acres

DEMOGRAPHICS	0.3 MILES	0.5 MILES	1 MILE
Total Households	371	811	2,898
Total Population	774	1,777	6,688
Average HH Income	\$57,851	\$56,190	\$59,970

LAND FOR SALE

PROPERTY SUMMARY





+/- .69 ACRES FOR SALE ON LAMEY BRIDGE ROAD

11038 Lamey Bridge Rd, Diberville, MS 39540

MONTE LUFFEY • PRINCIPAL

OFFICE: 228.276.2700

MOBILE: 228.547.1953

mluffey@southeastcre.com

FERNANDO PENAFIEL • ASSOCIATE

OFFICE: 228.276.2700

MOBILE: 228.236.5354

fpenafiel@southeastcre.com



LAND FOR SALE

ADDITIONAL PHOTOS

SOUTHEAST COMMERCIAL REAL ESTATE | 2310 19th Street Gulfport, MS 39501 | <https://southeastcre.com>



SOUTHEAST
COMMERCIAL
REAL ESTATE



+/- .69 ACRES FOR SALE ON LAMEY BRIDGE ROAD

11038 Lamey Bridge Rd, Diberville, MS 39540

MONTE LUFFEY • PRINCIPAL

OFFICE: 228.276.2700

MOBILE: 228.547.1953

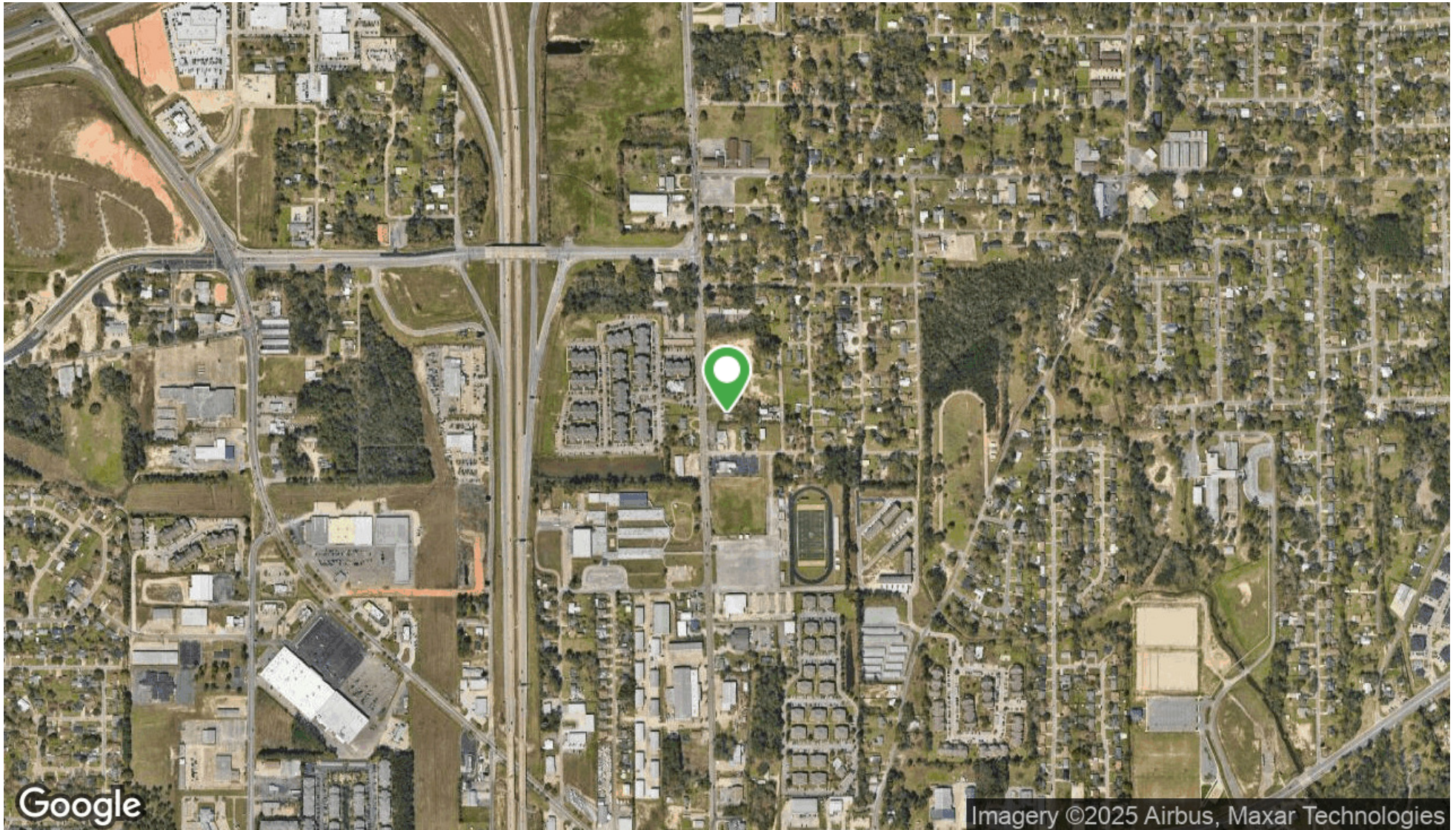
mluffey@southeastcre.com

FERNANDO PENAFIEL • ASSOCIATE

OFFICE: 228.276.2700

MOBILE: 228.236.5354

fpenafiel@southeastcre.com



LAND FOR SALE

AERIAL MAP

SOUTHEAST COMMERCIAL REAL ESTATE | 2310 19th Street Gulfport, MS 39501 | <https://southeastcre.com>



**SOUTHEAST
COMMERCIAL**
REAL ESTATE



+/- .69 ACRES FOR SALE ON LAMEY BRIDGE ROAD

11038 Lamey Bridge Rd, Diberville, MS 39540

MONTE LUFFEY • PRINCIPAL

OFFICE: 228.276.2700

MOBILE: 228.547.1953

mluffey@southeastcre.com

FERNANDO PENAFIEL • ASSOCIATE

OFFICE: 228.276.2700

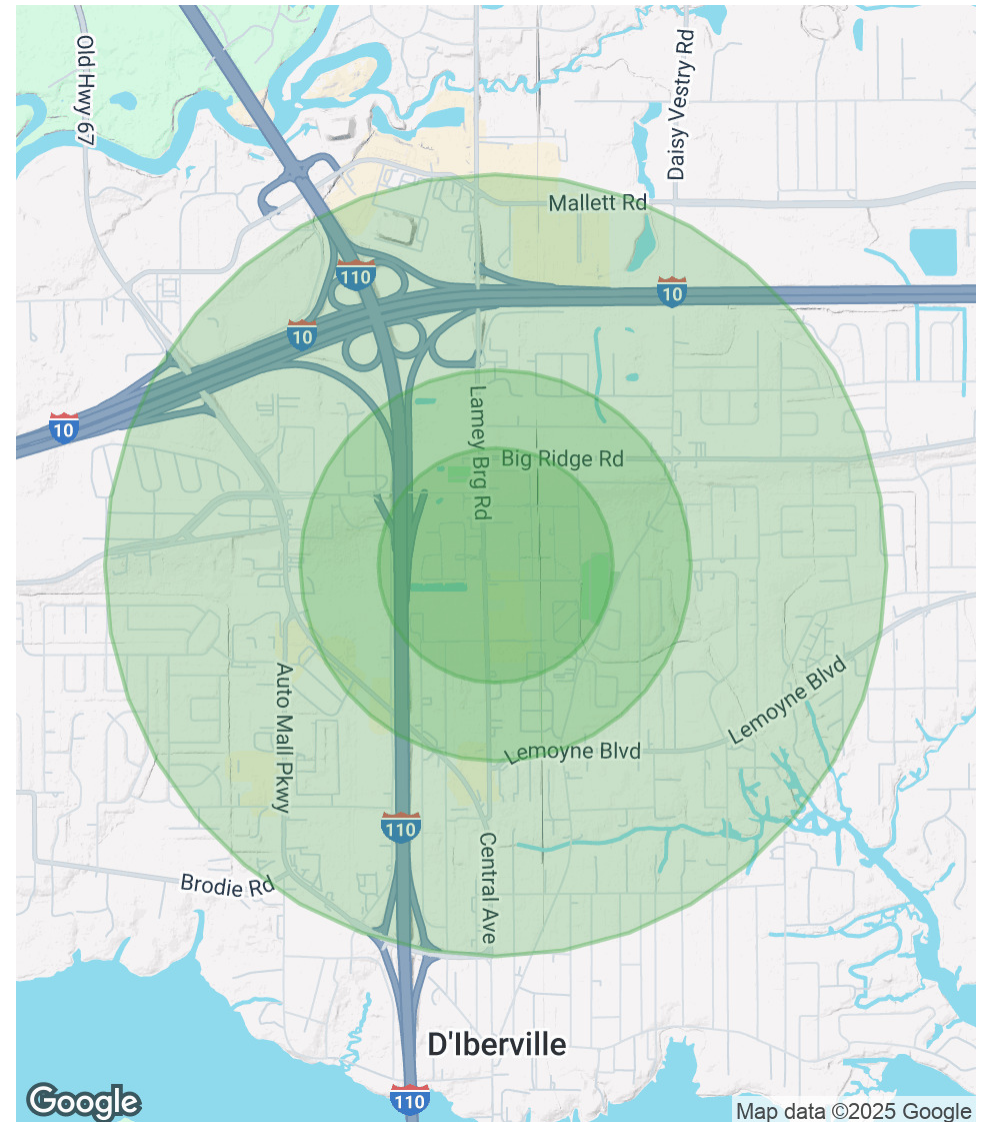
MOBILE: 228.236.5354

fpenafiel@southeastcre.com

POPULATION	0.3 MILES	0.5 MILES	1 MILE
Total Population	774	1,777	6,688
Average Age	37	38	39
Average Age (Male)	36	36	37
Average Age (Female)	38	39	41

HOUSEHOLDS & INCOME	0.3 MILES	0.5 MILES	1 MILE
Total Households	371	811	2,898
# of Persons per HH	2.1	2.2	2.3
Average HH Income	\$57,851	\$56,190	\$59,970
Average House Value	\$182,415	\$212,648	\$198,887

Demographics data derived from AlphaMap



LAND FOR SALE

DEMOGRAPHICS MAP & REPORT

