

OFFICE/RETAIL PROPERTY FOR LEASE

UNIQUE SM
PROPERTIES **TCN**
WORLDWIDE REAL ESTATE SERVICES
FULL SERVICE COMMERCIAL REAL ESTATE SOLUTIONS



PRIME LOHI COMMERCIAL PROPERTY

2101-2111 W 29TH AVE
DENVER, CO 80211

Property Features

Property Summary

- Prime Location in Lower Highlands – Situated on the vibrant intersection of 29th Ave/15th St, considered one of Denver’s most desirable and walkable retail destinations
- High Foot Traffic Area – Surrounded by popular restaurants, cafes, boutiques, and lifestyle retailers that draw consistent local and tourist traffic
- Eclectic & Upscale Neighborhood – Located in a trendy, historic district known for its charm, character, and high-income demographics
- Unique Space – featuring high ceilings, beautiful hardwood floors, exposed brick and Large Windows
- Flexible Retail Space – Ideal for boutique retail, salon, service-based business, or food and beverage concepts
- Excellent Visibility & Signage Opportunity – High exposure to both pedestrian and vehicle traffic along 29th Ave/15th St
- Formerly Used as a Photography Studio

Monthly Rate: \$5,000/Month + Utilities

Available Space Size: +/-2,700 SF

Total Building Size: 10,932 SF

Zoning U-MS-3

YOC 1887/1935

For more information:



Brett MacDougall

Vice President
303.512.2736
bmacdougall@uniqueprop.com

Michael DeSantis

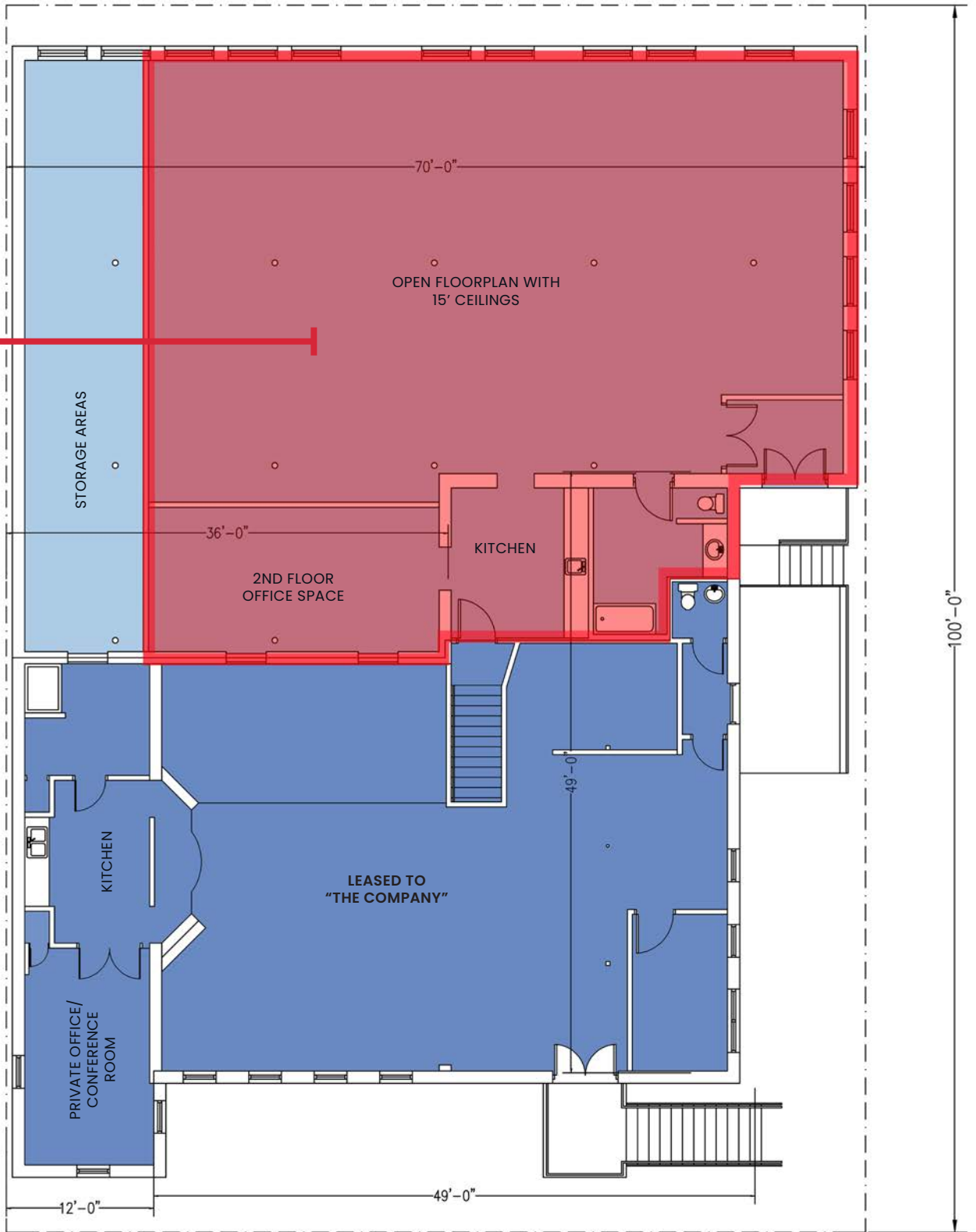
Vice President
303.512.1194
mdesantis@uniqueprop.com

2101-2111 W 29TH AVE

AVAILABLE SPACE PLAN

2111 W 29TH AVE
AVAILABLE SUITE

+/- 2,700 SF



N UNITILLA ST

W 29TH AVE

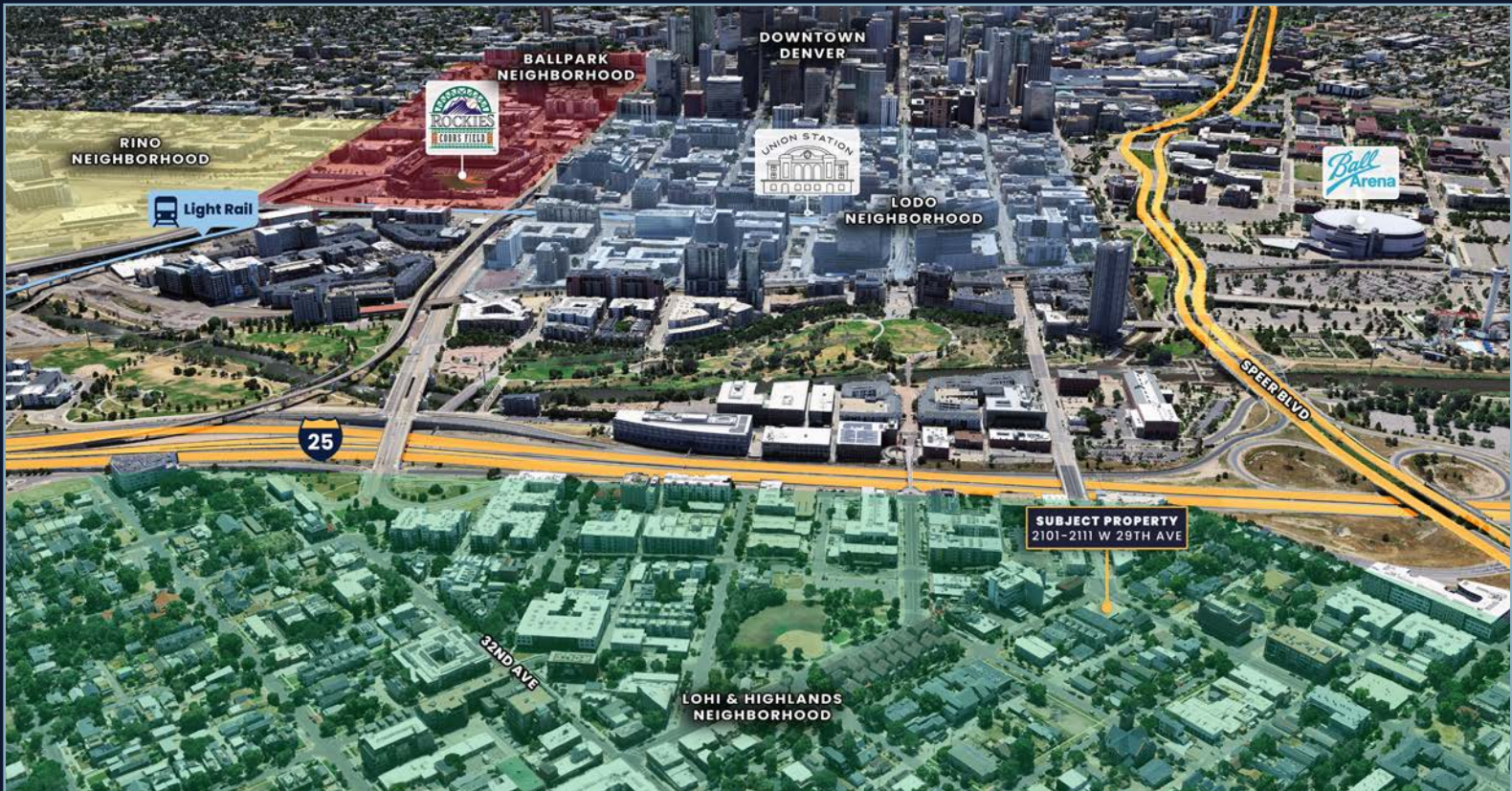
2101-2111 W 29TH AVE

RETAIL & NEIGHBORHOOD MAP



2101-2111 W 29TH AVE

DENVER, CO 80211



For more information:



Brett MacDougall

Vice President

303.512.2736

bmacdougall@uniqueprop.com

Michael DeSantis

Vice President

303.512.1194

mdesantis@uniqueprop.com