

*Multiple
Retail or
Office Suites
Available*



FOUNDRY POINT

20 ROMNEY STREET, CHARLESTON, SC 29403



PROPERTY HIGHLIGHTS

- Small Retail and Office Units Available
- Sizes Range from $\pm 1,311$ - 1,622 RSF
- Within 0.5 Mile of $\pm 1,450$ Multifamily Units (275 Units Within Foundry Point)
- Walking Distance from New Multi-Tenanted Office Developments
- Free Surface Parking



AERIAL MAP



FOUNDRY POINT




20 ROMNEY STREET

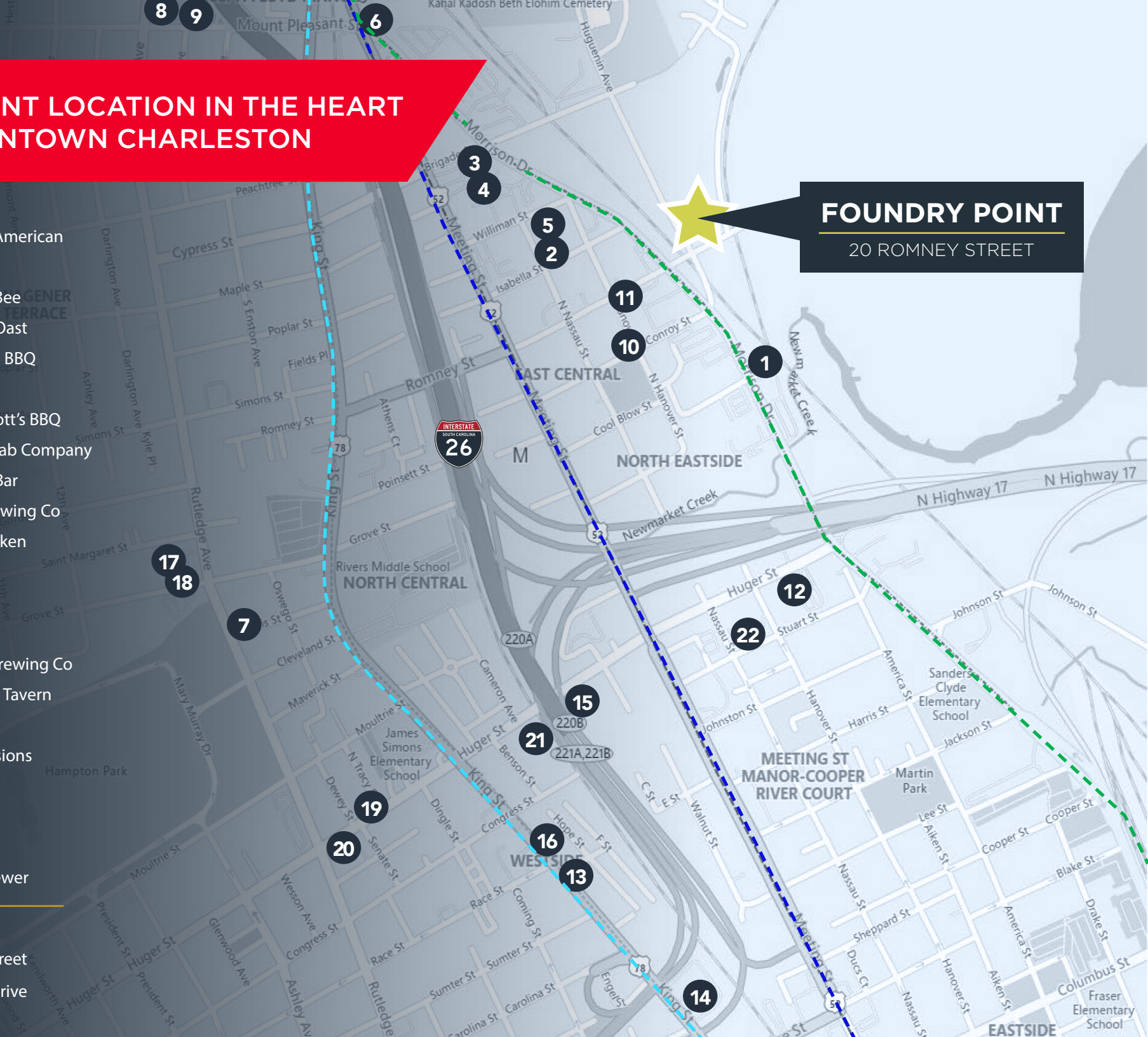
- ① **Charleston Tech Center**
Class A Office (88,000 RSF)
- ② **The Morris**
Class A Office (115,000 RSF)
- ③ **Atlantic on Romney Apartments**
(304 Units)
- ④ **The Merchant Apartments**
(231 Units)
- ⑤ **The Rumney Apartments**
(34 Units)
- ⑥ **45 Romney Street**
(Kickin' Chicken, Crust Wood Fired Pizza)
- ⑦ **Revelry Brewing**
- ⑧ **1 Cool Blow**
Class A Office (45,000 RSF)
- ⑨ **Madison Station Apartments**
(36 Units)

EXCELLENT LOCATION IN THE HEART OF DOWNTOWN CHARLESTON

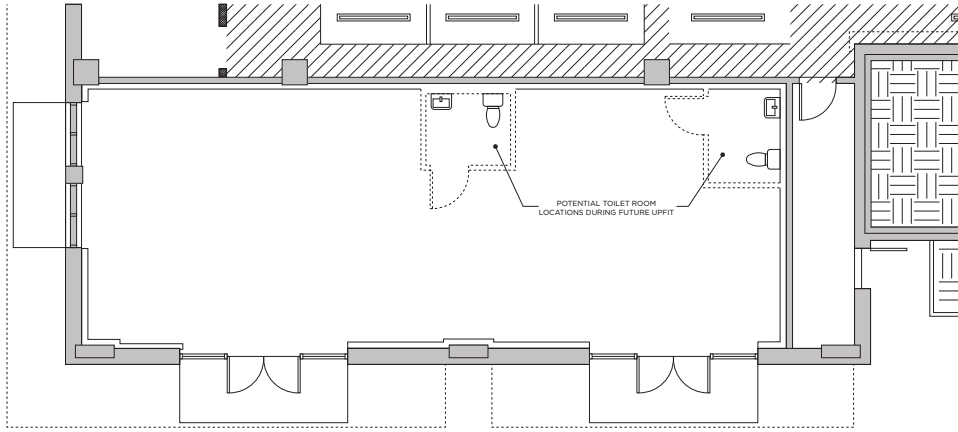
FOUNDRY POINT
20 ROMNEY STREET

- 1 The Royal American
- 2 Lewis BBQ
- 3 Butcher & Bee
- 4 Edmond's Oast
- 5 Hometeam BBQ
- 6 Santi's
- 7 Rodney Scott's BBQ
- 8 Rutledge Cab Company
- 9 Container Bar
- 10 Revelry Brewing Co
- 11 Kickin' Chicken
- 12 Taco Boy
- 13 Leon's
- 14 The Daily
- 15 Palmetto Brewing Co
- 16 Little Jack's Tavern
- 17 Food Lion
- 18 Herd Provisions
- 19 Renzo
- 20 Huriyal
- 21 High Wire
- 22 Baker & Brewer

-  King Street
-  Meeting Street
-  Morrison Drive



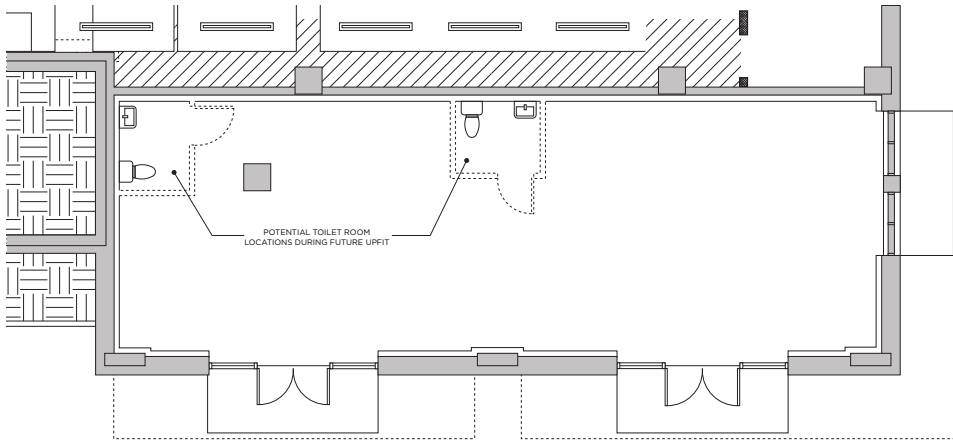
FLOOR PLANS



BUILDING 1

SUITE A

± 1,311 SF



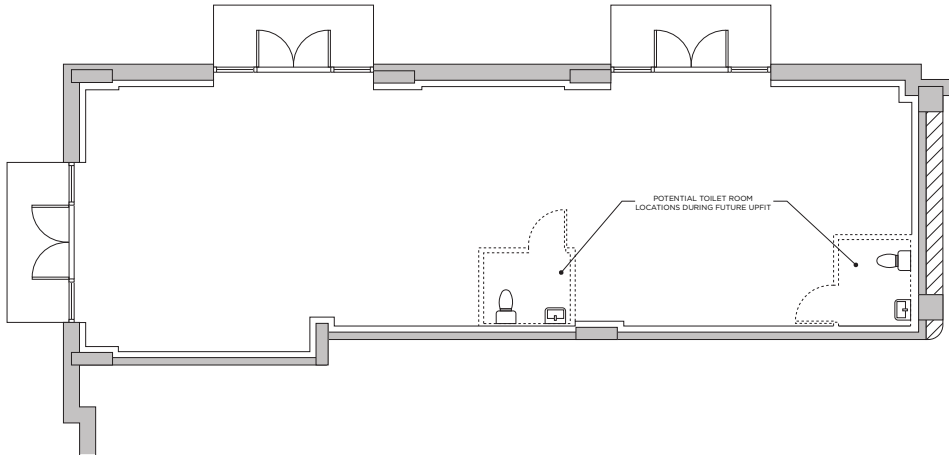
BUILDING 1

SUITE B

± 1,436 SF



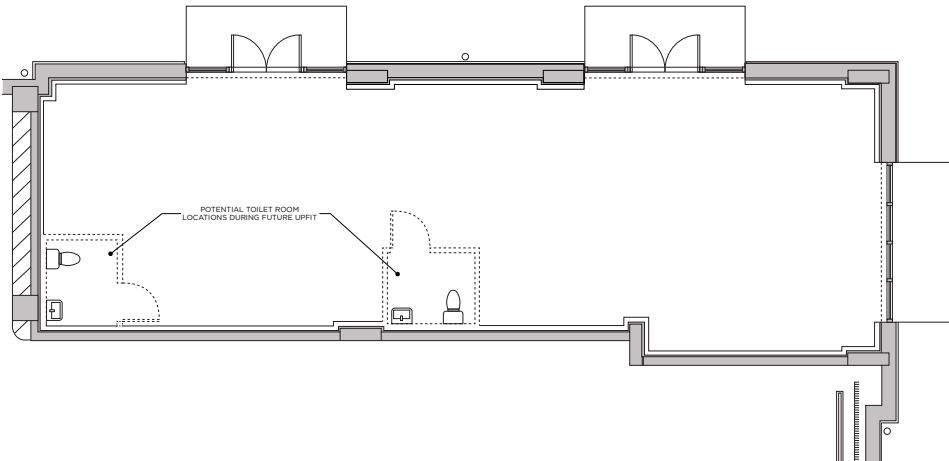
FLOOR PLANS



BUILDING 4

SUITE C

± 1,622 SF



BUILDING 5

SUITE D

± 1,622 SF



PHOTOGRAPHY





NICK TANANA

O +1 843 724 0109

C +1 240 793 4580

nick.tanana@cushwake.com

BRADY DASHIELL

O +1 843 724 0106

C +1 443 655 4334

brady.dashiell@cushwake.com

115 Central Island Street
Charleston, SC 29492

+1 843 724 0100

cushmanwakefield.com