

# 1162 BROADWAY

BETWEEN 27th AND 28th STREETS | NOMAD





# 1162 BROADWAY

BETWEEN 27th AND 28th STREETS | NOMAD

## PROPERTY HIGHLIGHTS

- New retail location in the heart of the NoMad district at the base of a 13-story commercial building
- Close proximity to Madison Square Park and the Flatiron Building
- Convenient access to subway trains N, R, W

**SIZES:** 900 SF Ground Floor  
900 SF Lower Level (Usable)

**POSSESSION:** ASAP

**FRONTAGE:** 10 Feet

**TRANSPORTATION:** 

**NEIGHBORS:**

sweetgreen®



**AUBI & RAMSA™**  
21+ ICE CREAM



CONTACT OUR BROKERS FOR MORE INFORMATION:

**CAROLINA AZIZ**  
CAziz@ksrny.com

**516.640.6961**

**IKE BIBI**  
IBibi@ksrny.com

**347.417.2860**

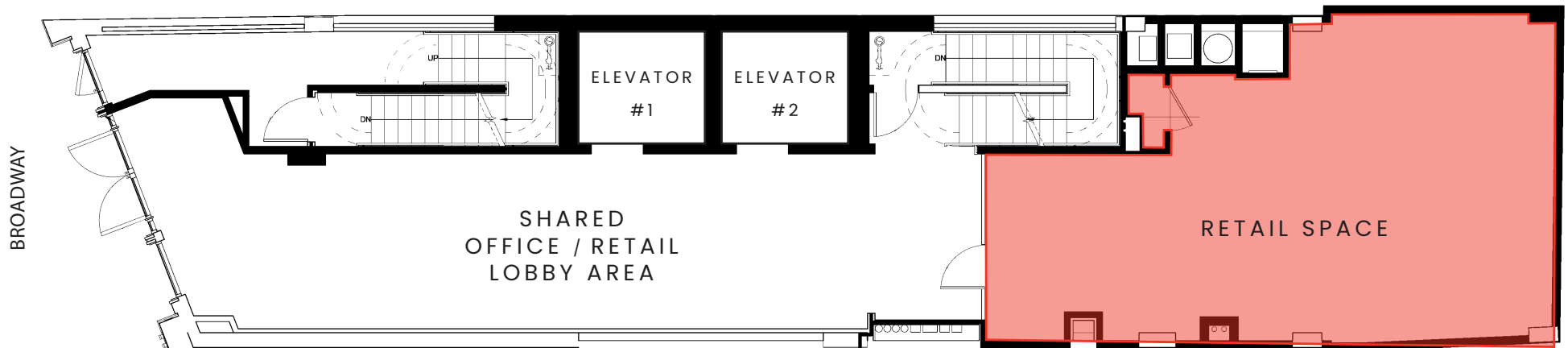
All information supplied in this marketing presentation and/or flyer is from sources deemed reliable and is furnished subject to errors, omissions, modifications, removal of listings from sale/lease and to any listing condition. Any square footage, dimensions, floor plans and/or technical data set forth are approximations and are subject to further elaboration/confirmation.



# 1162 BROADWAY

BETWEEN 27th AND 28th STREETS | NOMAD

## FLOOR PLAN (PROPOSED): GROUND FLOOR - 900 SF



CONTACT OUR BROKERS FOR MORE INFORMATION:

**CAROLINA AZIZ**  
CAziz@ksrny.com

**516.640.6961**

**IKE BIBI**  
IBibi@ksrny.com

**347.417.2860**

All information supplied in this marketing presentation and/or flyer is from sources deemed reliable and is furnished subject to errors, omissions, modifications, removal of listings from sale/lease and to any listing condition. Any square footage, dimensions, floor plans and/or technical data set forth are approximations and are subject to further elaboration/confirmation.



