

RETAIL/OFFICE SPACE FOR LEASE IN LEAWOOD

2,174-2,400 SF Available



CAMDEN WOODS

14300 Kenneth Rd, Leawood, KS



CATALYSTPROPERTYGROUP.COM | 913-914-7010

PROPERTY HIGHLIGHTS



WHY YOU SHOULD CONSIDER...

- 2,174-2,400sf of retail/office space available for lease in neighborhood mixed use building
- Located on the hard corner of 143rd & Kenneth Rd in affluent Leawood, KS
- Join Dennis Ayer DDS, Vital Roots Chiropractic and more local and regional tenants
- Ample on site surface parking
- Surrounded by dense residential and average household income of \$208,800 within 1 mile
- Perfect for service-oriented retail users, medical and office tenants!



DEMOGRAPHICS

TOTAL POPULATION

1 Mile: 4,539
3 Mile: 48,997
5 Mile: 132,025



DAYTIME POPULATION

1 Mile: 1,942
3 Mile: 12,941
5 Mile: 102,589



AVG HH INCOME

1 Mile: \$ 208,819
3 Mile: \$ 220,897
5 Mile: \$ 170,754



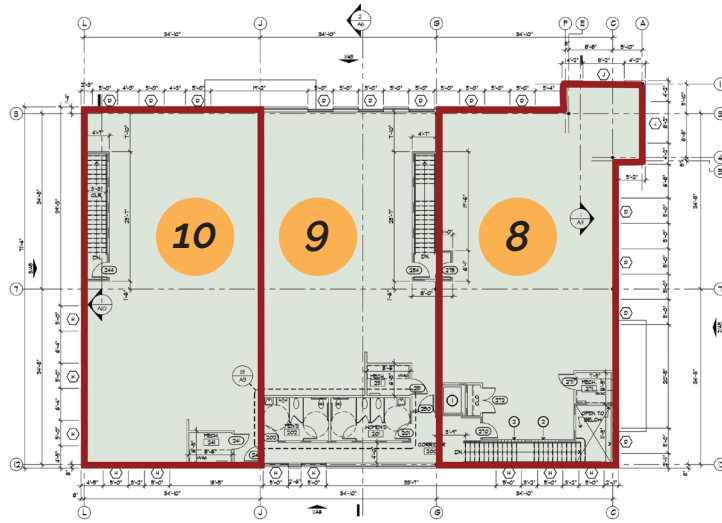
NEIGHBORING TENANTS

Dennis C. Ayer, DDS, LLC

Smiles...Friendship...Trust

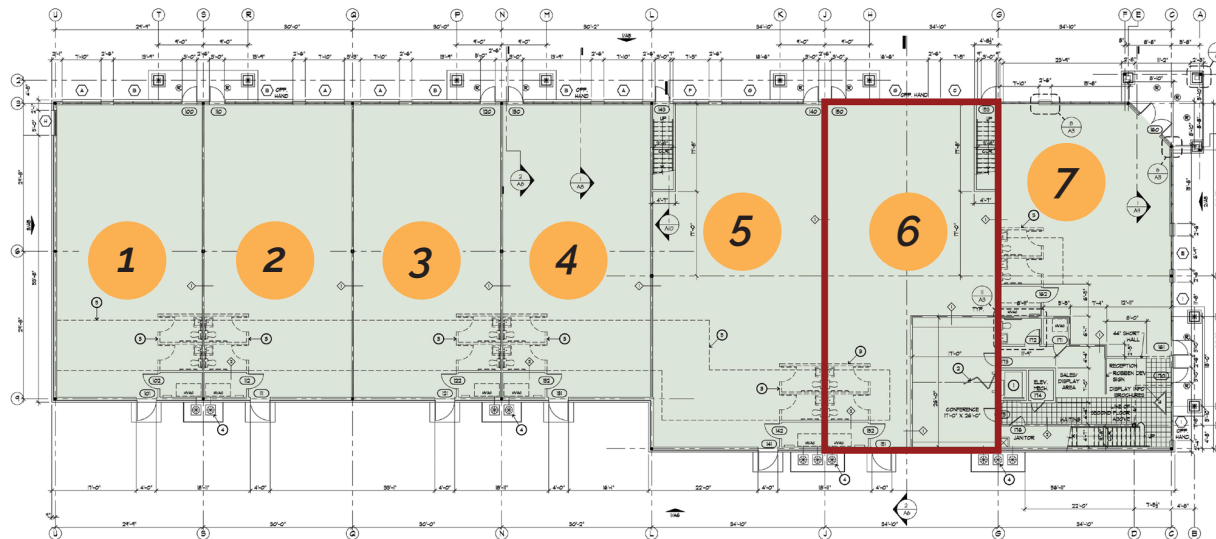


SITE PLAN



Floor 2

Suite #	Tenant
1	Simplified K9
2	Pups N Suds
3	Natural High Wellness
4	Fitness Quest
5	Fitness Quest
6	AVAILABLE - 2,400 SF
7	Dennis Ayers DDS
8	AVAILABLE (May 1st, 2026) - 2,174 SF
9	Vital Roots Chiropractic
10	AVAILABLE (April 1st, 2026) - 2,256 SF



Floor 1

MARKET AERIAL

