

PRIME OFFICE SPACE FOR LEASE

SPRINGDALE BUSINESS CENTER

3291 South Thompson Street, Springdale, AR 72764



PROPERTY DESCRIPTION

Springdale Business Center provides a flexible arrangement for most any type of general office user! These well maintained suites is a rare gems and ready for your growing business! Located along 71 Business, providing you ample exposure and easy visibility for potential customers of the office tenants.

PROPERTY HIGHLIGHTS

- Flexible arrangement for most any type of general office user!
- Located along 71 Business, providing ample exposure and easy visibility
- The modified gross includes everything except for gas/electric bill and a \$175 fee monthly for trash and water!
- The property is just 1.3 miles south of the 412/HWY 71B intersection!
- Springdale Business Center is comprised of 8 well maintained buildings, great landscaping, and is professionally managed!

OFFERING SUMMARY

Lease Rate:	\$23.50 SF/yr (MG)
Available SF:	2,204 SF
Building Size:	38,397 SF

DEMOGRAPHICS

	1 MILE	3 MILES	5 MILES
Total Households	2,590	19,945	40,683
Total Population	7,186	56,843	110,295
Average HH Income	\$55,355	\$53,670	\$55,228

We obtained the information above from sources we believe to be reliable. However, we have not verified its accuracy and make no guarantee, warranty or representation about it. It is submitted subject to the possibility of errors, omissions, change of price, rental or other conditions, prior sale, lease or financing, or withdrawal without notice. We include projections, opinions, assumptions or estimates for example only, and they may not represent current or future performance of the property. You and your tax and legal advisors should conduct your own investigation of the property and transaction.

SALMONSEN GROUP

Executive Broker
O: 479.231.1355
C: 479.330.1250
sgrleadmanager@gmail.com
AR #EB00066512

KW COMMERCIAL
201 SW 14th St.
Suite 203
Bentonville, AR 72712

Each Office Independently Owned and Operated salmonsengroup.com

PRIME OFFICE SPACE FOR LEASE



SPRINGDALE BUSINESS CENTER

3291 South Thompson Street, Springdale, AR 72764



LEASE INFORMATION

Lease Type:	MG	Lease Term:	Negotiable
Total Space:	2,204 SF	Lease Rate:	\$23.50 SF/yr

AVAILABLE SPACES

SUITE	TENANT	SIZE (SF)	LEASE TYPE	LEASE RATE	DESCRIPTION
3291 S Thompson Suite E104- E105	Available	2,204 SF	Modified Gross	\$23.50 SF/yr	-

We obtained the information above from sources we believe to be reliable. However, we have not verified its accuracy and make no guarantee, warranty or representation about it. It is submitted subject to the possibility of errors, omissions, change of price, rental or other conditions, prior sale, lease or financing, or withdrawal without notice. We include projections, opinions, assumptions or estimates for example only, and they may not represent current or future performance of the property. You and your tax and legal advisors should conduct your own investigation of the property and transaction.

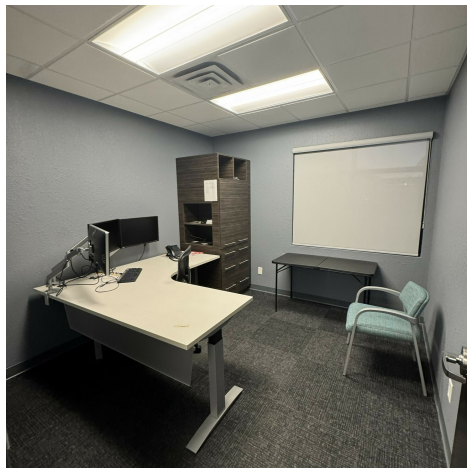
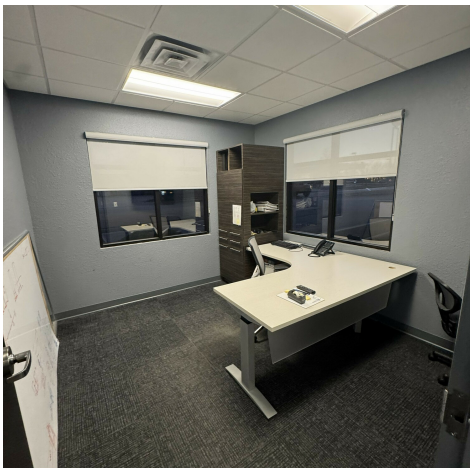
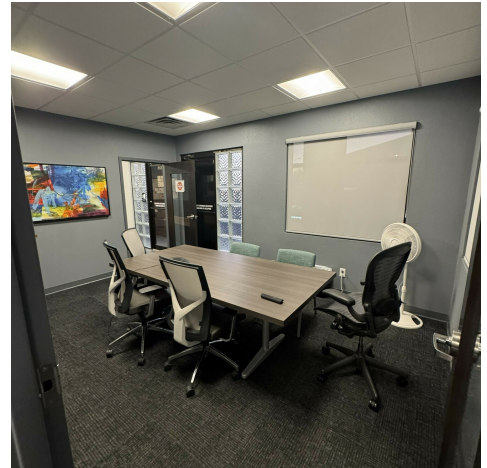
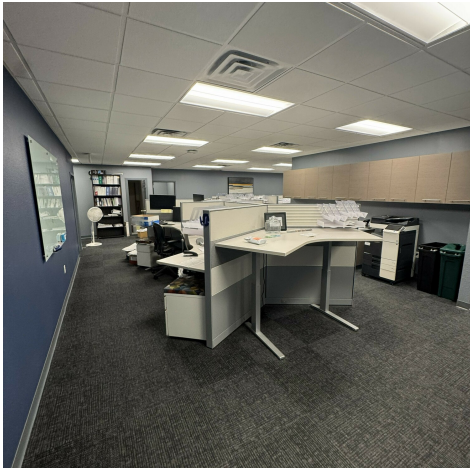
SALMONSEN GROUP
Executive Broker
O: 479.231.1355
C: 479.330.1250
sgrleadmanager@gmail.com
AR #EB00066512

KW COMMERCIAL
201 SW 14th St.
Suite 203
Bentonville, AR 72712

OFFICE FOR LEASE

SPRINGDALE BUSINESS CENTER

3291 South Thompson Street, Springdale, AR 72764



We obtained the information above from sources we believe to be reliable. However, we have not verified its accuracy and make no guarantee, warranty or representation about it. It is submitted subject to the possibility of errors, omissions, change of price, rental or other conditions, prior sale, lease or financing, or withdrawal without notice. We include projections, opinions, assumptions or estimates for example only, and they may not represent current or future performance of the property. You and your tax and legal advisors should conduct your own investigation of the property and transaction.

SALMONSEN GROUP

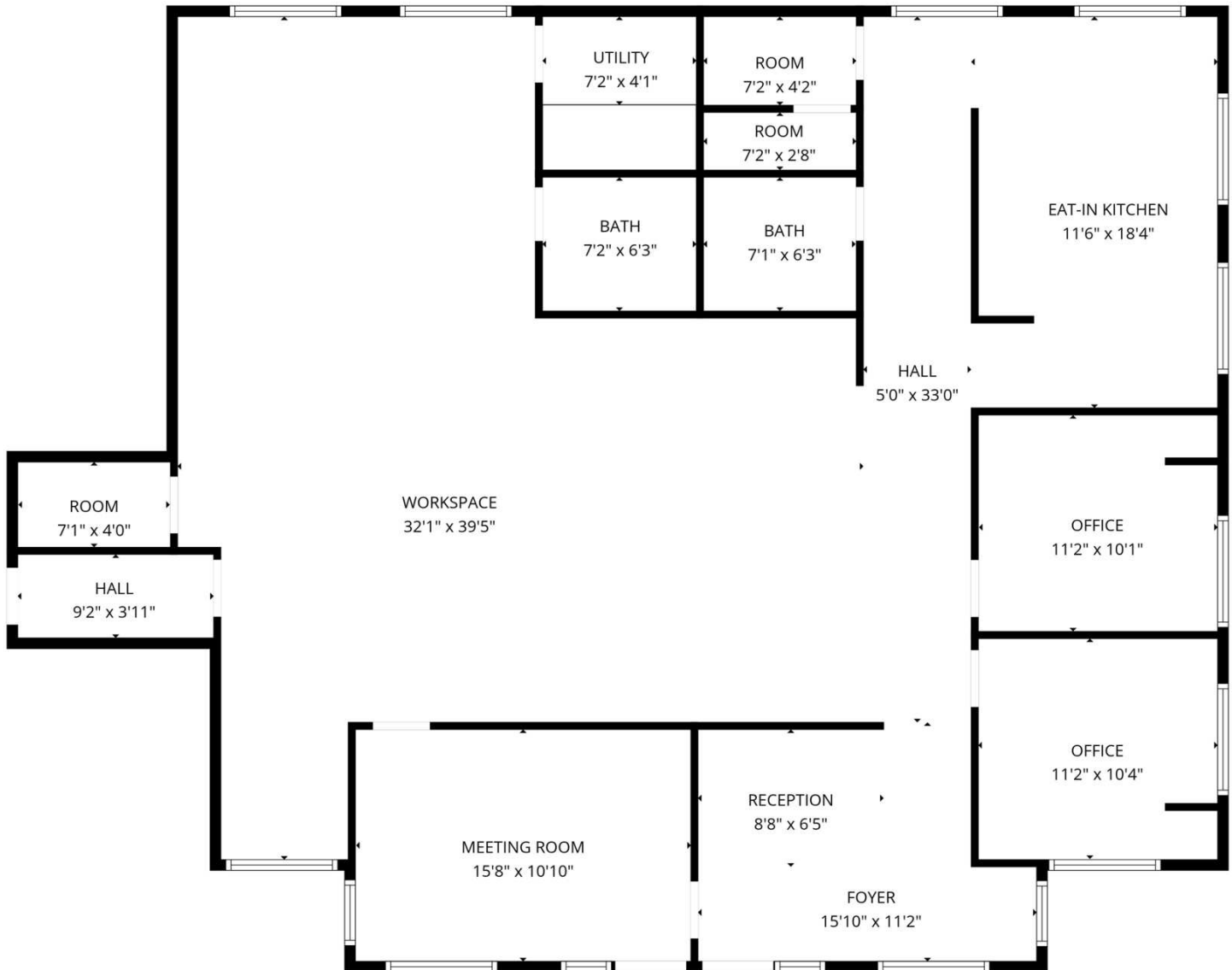
Executive Broker
O: 479.231.1355
C: 479.330.1250
sgrleadmanager@gmail.com
AR #EB00066512

KW COMMERCIAL
201 SW 14th St.
Suite 203
Bentonville, AR 72712

Each Office Independently Owned and Operated salmonsengroup.com

SPRINGDALE BUSINESS CENTER

Suite E104 -E105 Floor Plan



FLOOR PLAN CREATED BY CUBICASA APP. MEASUREMENTS DEEMED HIGHLY RELIABLE BUT NOT GUARANTEED.

We obtained the information above from sources we believe to be reliable. However, we have not verified its accuracy and make no guarantee, warranty or representation about it. It is submitted subject to the possibility of errors, omissions, change of price, rental or other conditions, prior sale, lease or financing, or withdrawal without notice. We include projections, opinions, assumptions or estimates for example only, and they may not represent current or future performance of the property. You and your tax and legal advisors should conduct your own investigation of the property and transaction.

SALMONSEN GROUP

Executive Broker
O: 479.231.1355
C: 479.330.1250
sgrleadmanager@gmail.com
AR #EB00066512

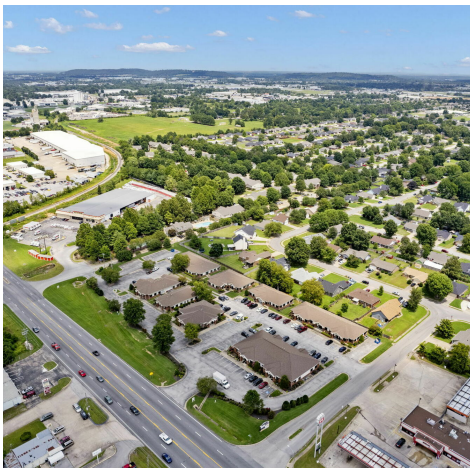
KW COMMERCIAL
201 SW 14th St.
Suite 203
Bentonville, AR 72712

Each Office Independently Owned and Operated salmonsengroup.com

PRIME OFFICE SPACE FOR LEASE

SPRINGDALE BUSINESS CENTER

3291 South Thompson Street, Springdale, AR 72764



We obtained the information above from sources we believe to be reliable. However, we have not verified its accuracy and make no guarantee, warranty or representation about it. It is submitted subject to the possibility of errors, omissions, change of price, rental or other conditions, prior sale, lease or financing, or withdrawal without notice. We include projections, opinions, assumptions or estimates for example only, and they may not represent current or future performance of the property. You and your tax and legal advisors should conduct your own investigation of the property and transaction.

SALMONSEN GROUP

Executive Broker
O: 479.231.1355
C: 479.330.1250
sgrleadmanager@gmail.com
AR #EB00066512

KW COMMERCIAL
201 SW 14th St.
Suite 203
Bentonville, AR 72712

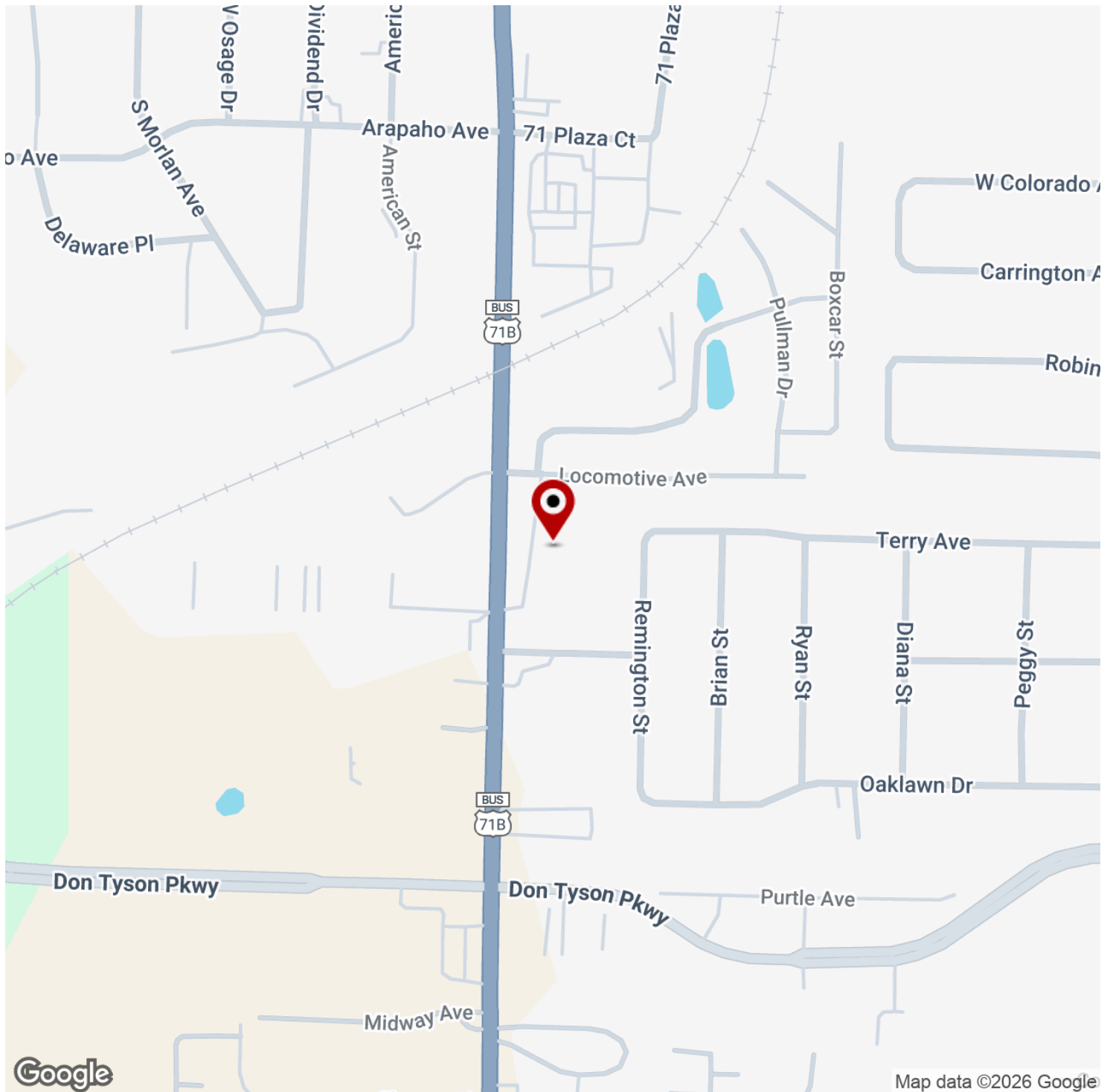
Each Office Independently Owned and Operated salmonsengroup.com

PRIME OFFICE SPACE FOR LEASE



SPRINGDALE BUSINESS CENTER

3291 South Thompson Street, Springdale, AR 72764



We obtained the information above from sources we believe to be reliable. However, we have not verified its accuracy and make no guarantee, warranty or representation about it. It is submitted subject to the possibility of errors, omissions, change of price, rental or other conditions, prior sale, lease or financing, or withdrawal without notice. We include projections, opinions, assumptions or estimates for example only, and they may not represent current or future performance of the property. You and your tax and legal advisors should conduct your own investigation of the property and transaction.

SALMONSEN GROUP

Executive Broker
O: 479.231.1355
C: 479.330.1250
sgrleadmanager@gmail.com
AR #EB00066512

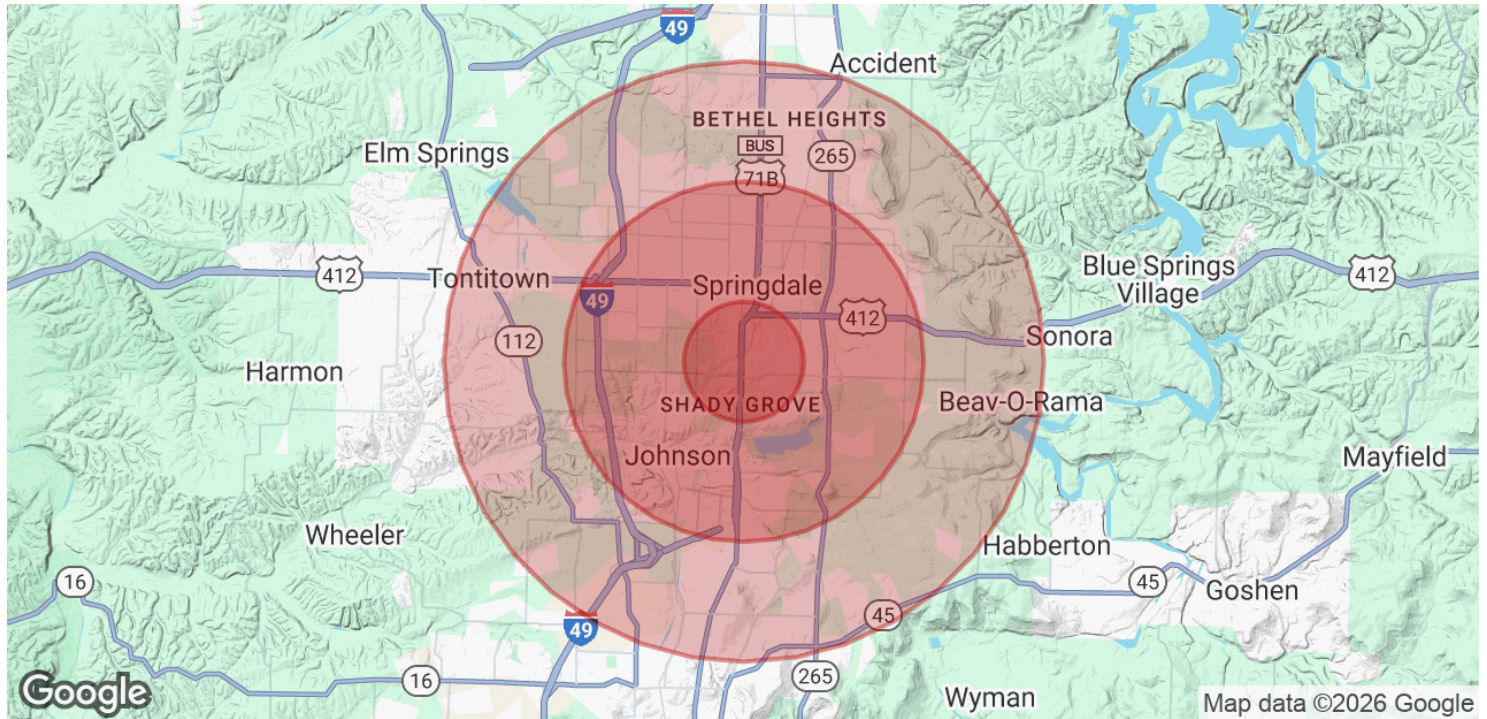
KW COMMERCIAL

201 SW 14th St.
Suite 203
Bentonville, AR 72712

Each Office Independently Owned and Operated salmonsengroup.com

SPRINGDALE BUSINESS CENTER

3291 South Thompson Street, Springdale, AR 72764



POPULATION	1 MILE	3 MILES	5 MILES
Total Population	7,186	56,843	110,295
Average Age	29.7	30.2	30.7
Average Age (Male)	28.7	29.3	30.0
Average Age (Female)	31.4	31.7	31.7
HOUSEHOLDS & INCOME	1 MILE	3 MILES	5 MILES
Total Households	2,590	19,945	40,683
# of Persons per HH	2.8	2.8	2.7
Average HH Income	\$55,355	\$53,670	\$55,228
Average House Value		\$166,544	\$192,015

2020 American Community Survey (ACS)

We obtained the information above from sources we believe to be reliable. However, we have not verified its accuracy and make no guarantee, warranty or representation about it. It is submitted subject to the possibility of errors, omissions, change of price, rental or other conditions, prior sale, lease or financing, or withdrawal without notice. We include projections, opinions, assumptions or estimates for example only, and they may not represent current or future performance of the property. You and your tax and legal advisors should conduct your own investigation of the property and transaction.

SALMONSEN GROUP

Executive Broker
O: 479.231.1355
C: 479.330.1250
sgrleadmanager@gmail.com
AR #EB00066512

KW COMMERCIAL
201 SW 14th St.
Suite 203
Bentonville, AR 72712

Each Office Independently Owned and Operated salmonsengroup.com