



ASHBURN, GA

640 E WASHINGTON AVE

16,000 SF AVAILABLE (1.29 ACRES)



PROJECT DETAILS

640 E WASHINGTON AVE • 16,000 SF AVAILABLE

PROPERTY HIGHLIGHTS

- 16,000 SF Available (1.29 acres)
- Over 7,000 cars pass the property daily
- Close proximity to I-75
- Strong access, traffic, and visibility

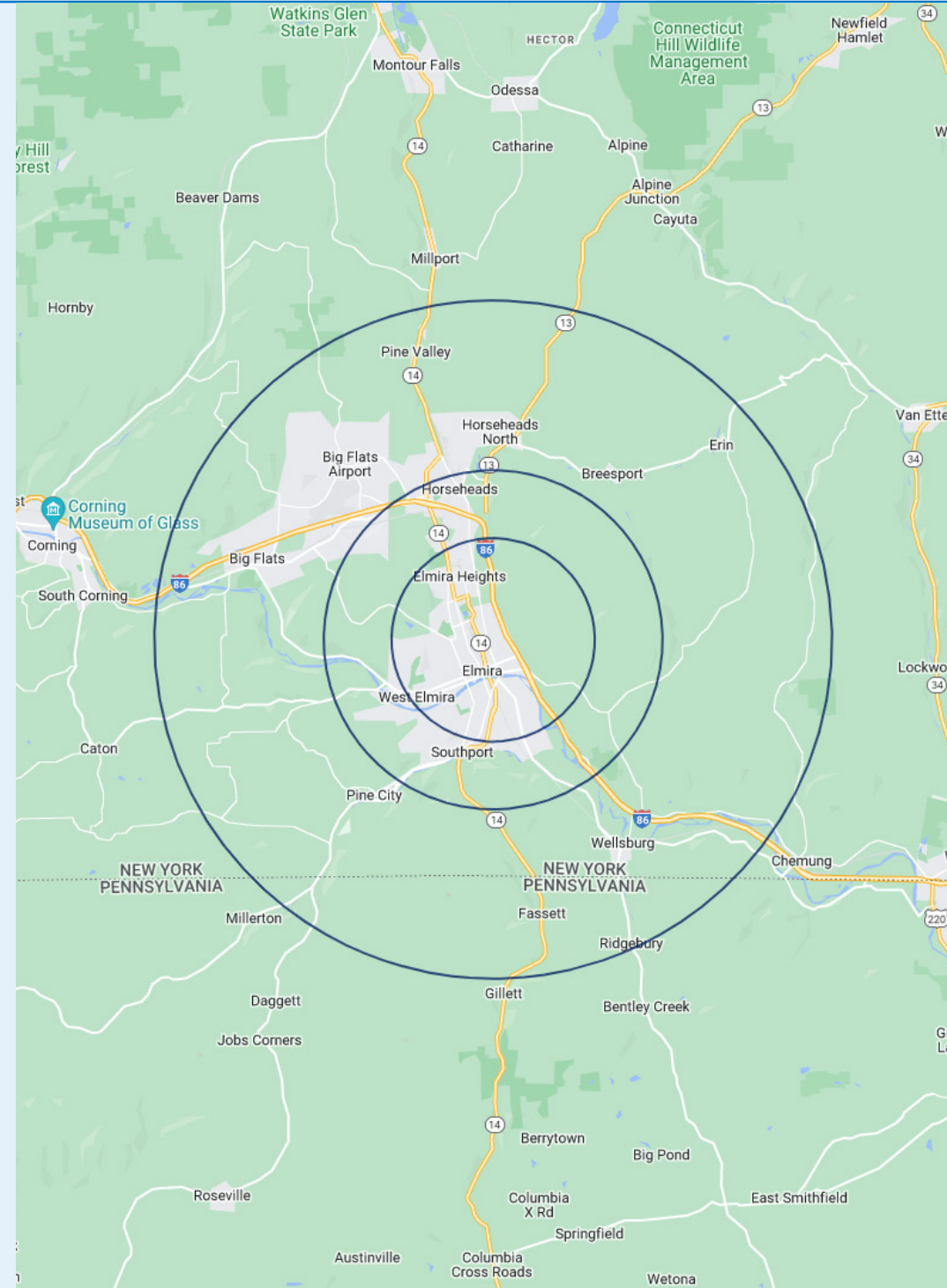
COUNTY

Turner

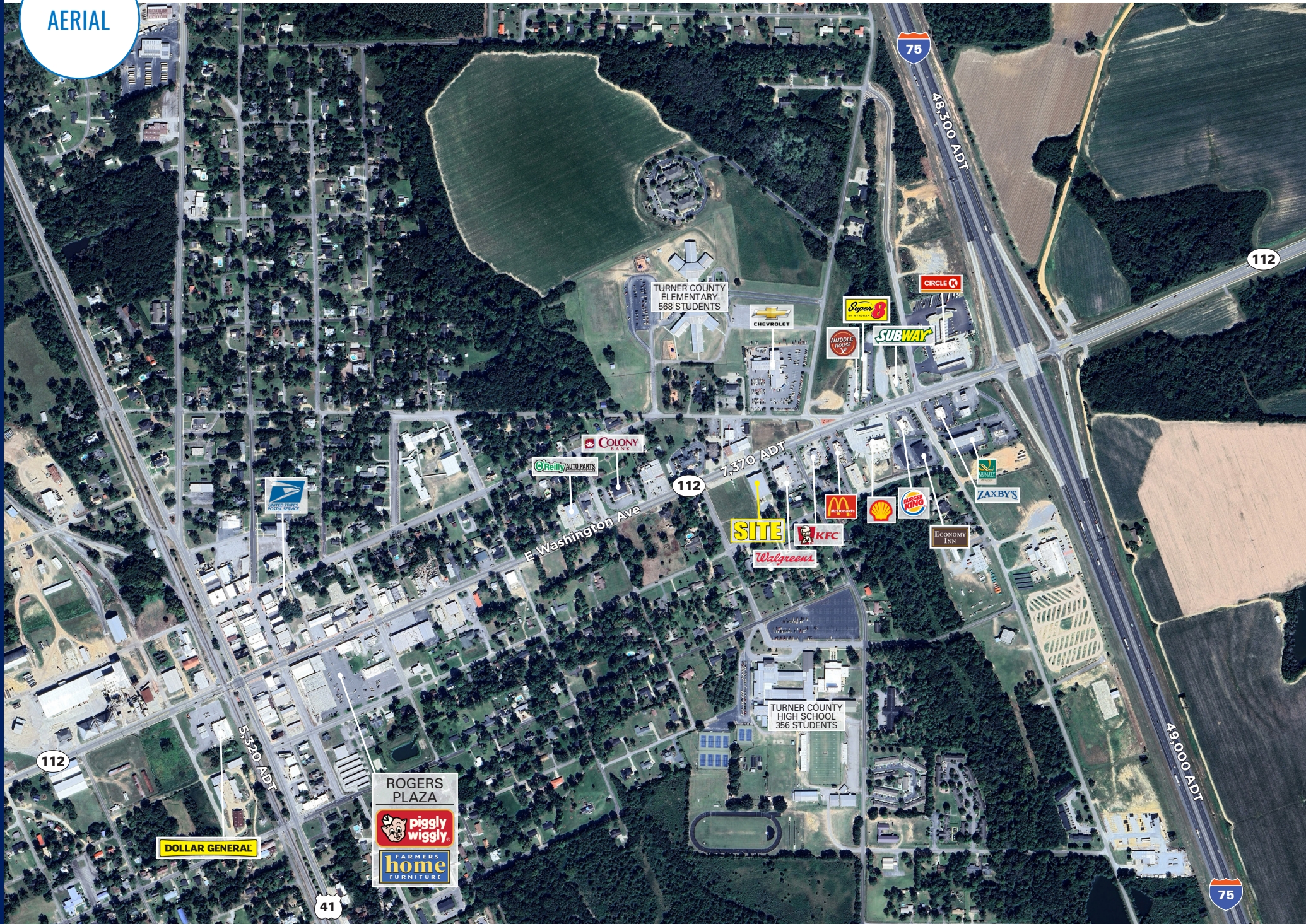
MARKET

Ashburn

	3 MILES	5 MILES	10 MILES
 POPULATION	5,765	6,695	9,409
 DAYTIME POPULATION	2,260	2,329	2,616
 MEDIAN HH INCOME	\$44,764	\$48,184	\$51,925



AERIAL



ASHBURN, GA

640 E WASHINGTON AVE

ANDREW SADOWSKY

215.873.5313
ASADOWSKY@ATLANTICRETAIL.COM



ALBANY

ATLANTA
FIVE PIEDMONT CENTER, STE 210
3525 PIEDMONT ROAD NE
ATLANTA, GA 30305
470.766.1777

BOSTON

CHARLOTTE

LOS ANGELES

NEW YORK CITY

ORLANDO

PITTSBURGH

WEST PALM BEACH

WWW.ATLANTICRETAIL.COM

[LINKEDIN.COM/COMPANY/ATLANTIC-RETAIL-PROPERTIES](https://www.linkedin.com/company/atlantic-retail-properties)
 [INSTAGRAM.COM/ATLANTIC_RETAIL/](https://www.instagram.com/atlantic_retail/)

CHAINLINKS
RETAIL ADVISORS