

OAKLAND INDUSTRIAL PARK AKA AFFORDABLE WAREHOUSES

1900-2261 NW 29TH STREET, OAKLAND PARK, FL 33311

PROPERTY SUMMARY

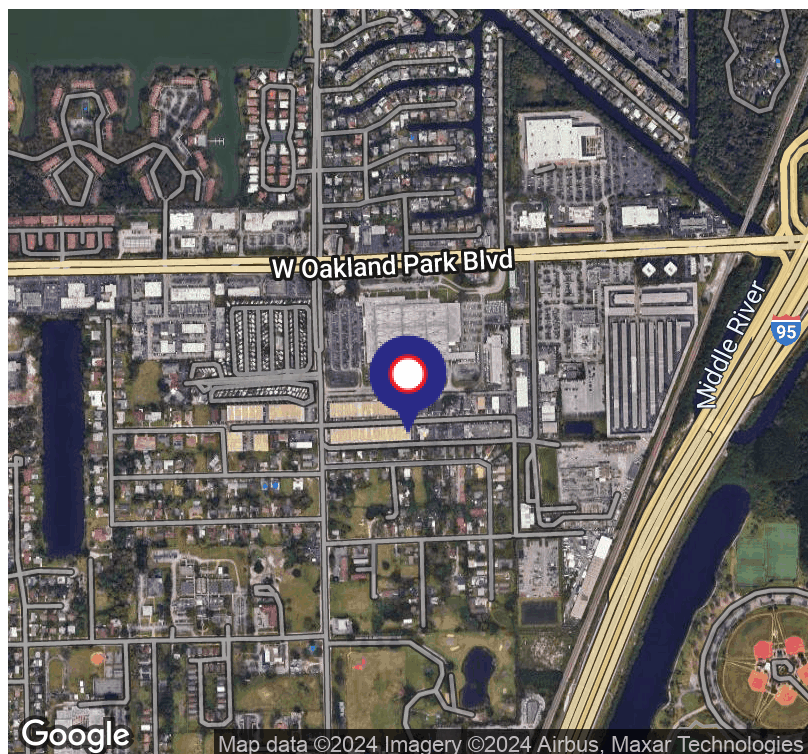


PROPERTY DESCRIPTION

The Oakland Industrial Park, also known as Affordable Warehouses, was built in 1973 and is a 193,600 square foot small bay warehouse complex ½ mile west of the I-95 highway and one block south of Oakland Park Blvd behind the main Broward County United States Postal Service office. The property has hurricane impact doors and windows, LED lighting, concrete construction, street level overhead doors and 10-20% air-conditioned space with office finishes. The roof is a Twin-T concrete deck with units ranging in size from 900 square feet up to 6,000 square feet. The bays have 16 foot tall ceilings and grade level overhead doors. The property is zoned I-1 for Light Industrial and is ideal for light to medium industrial uses.

PROPERTY HIGHLIGHTS

- I-1 Zoning
- Retail fronts NW 21st Ave
- Small bay warehouses are on NW 29th St
- 3 phase power
- Front and rear grade level overhead doors
- 16' clear ceiling height
- Close to I-95



ANGIE WEAVER

Lauderdale Lakes and Lauderdale Manager
Direct: 954.485.9200 | Cell: 917.645.2339
angie@levyrai.com

HALEY PRESSER

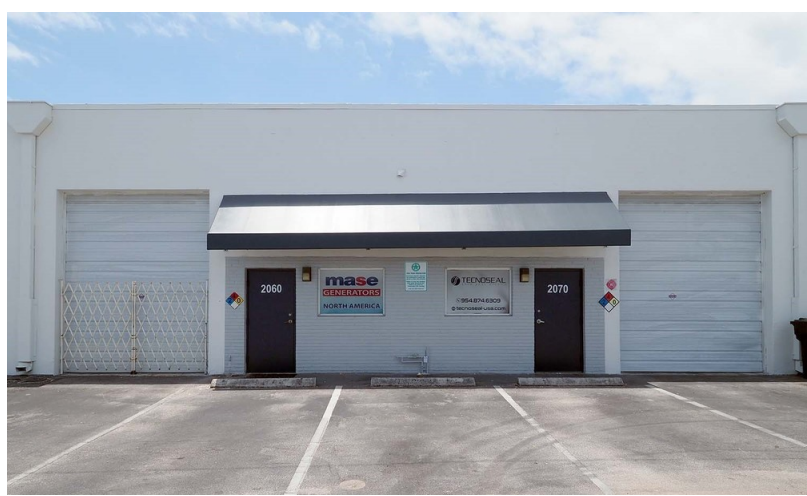
Property Manager / Sales Associate
Direct: 954.485.9200 | Cell: 954.254.5396
Haley@levyrai.com



OAKLAND INDUSTRIAL PARK AKA AFFORDABLE WAREHOUSES

1900-2261 NW 29TH STREET, OAKLAND PARK, FL 33311

ADDITIONAL PHOTOS

**ANGIE WEAVER**

Lauderdale Lakes and Lauderdale Manager
 Direct: 954.485.9200 | Cell: 917.645.2339
angie@levyrai.com

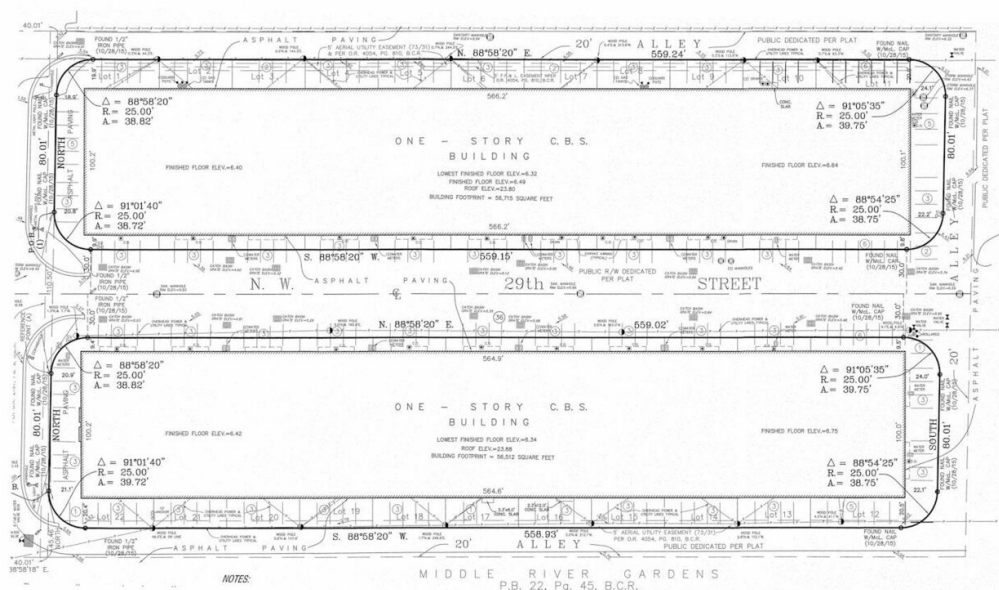
HALEY PRESSER

Property Manager / Sales Associate
 Direct: 954.485.9200 | Cell: 954.254.5396
Haley@levyrai.com



OAKLAND INDUSTRIAL PARK AKA AFFORDABLE WAREHOUSES
1900-2261 NW 29TH STREET, OAKLAND PARK, FL 33311

1900-2090 NW 29TH STREET (TOP) 1901-2091 NW 29TH ST (BOTTOM)



ANGIE WEAVER

Lauderdale Lakes and Lauderdale Manager
Direct: 954.485.9200 | Cell: 917.645.2339
angie@levyrai.com

HALEY PRESSER

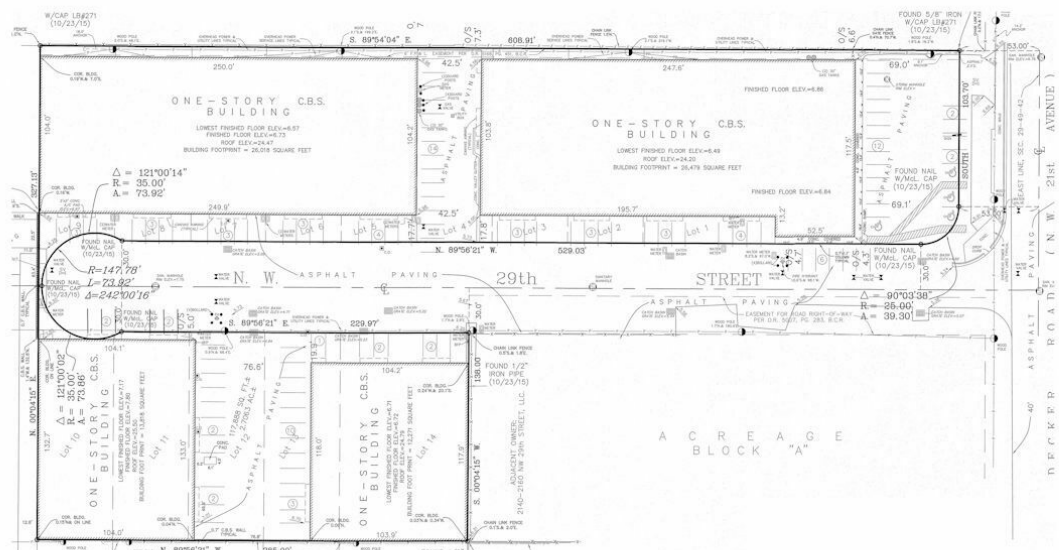
Property Manager / Sales Associate
Direct: 954.485.9200 | Cell: 954.254.5396
Haley@levyrai.com



OAKLAND INDUSTRIAL PARK AKA AFFORDABLE WAREHOUSES

1900-2261 NW 29TH STREET, OAKLAND PARK, FL 33311

SITE PLAN



ANGIE WEAVER

Lauderdale Lakes and Lauderdale Manager
 Direct: 954.485.9200 | Cell: 917.645.2339
angie@levyrai.com

HALEY PRESSER

Property Manager / Sales Associate
 Direct: 954.485.9200 | Cell: 954.254.5396
Haley@levyrai.com

