



333

NORTH CANYONS PARKWAY

LIVERMORE, CA



Dave Bruzzone

Managing Director
t 925-467-0910
david.bruzzone@nrmk.com

RE License #01103498

Jeff Morgenstern

Senior Managing Director
t 925-467-0905
jeff.morgenstern@nrmk.com

RE License #01275910

NEWMARK



CURRENT AVAILABLE SPACE

AVAILABLE NOW

SUITE 100 ±24,462 SF

(Divisible to ±12,000 RSF)

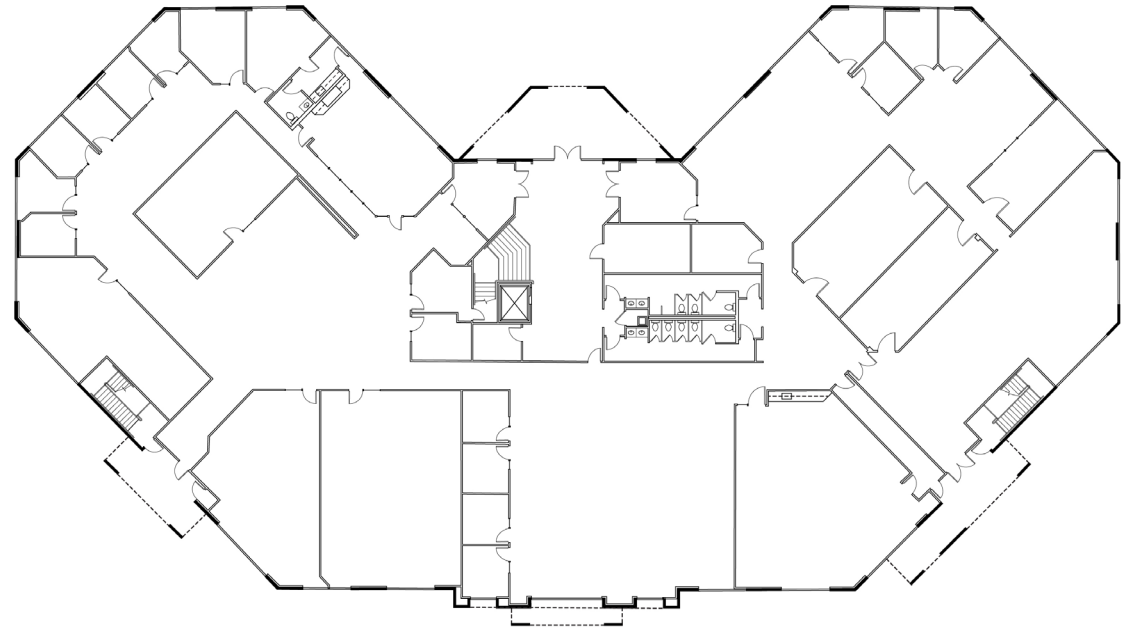
SUITE 200 ±8,208 SF

SUITE 201 ±8,341 SF

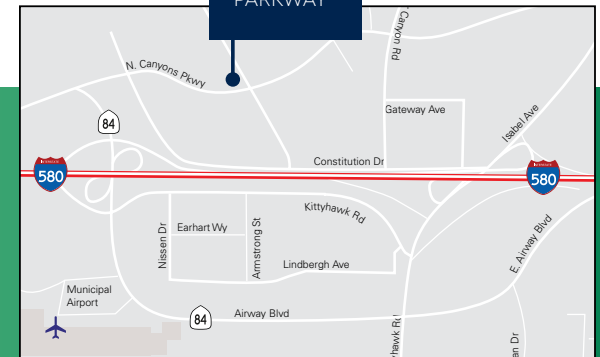
FLOOR PLAN

SUITE 100 | ±24,462 SF

SUITE 100 ±24,462 SF
(Divisible to ±12,000 RSF)



333
NORTH
CANYONS
PARKWAY



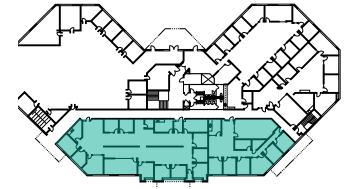
Dave Bruzzone
Managing Director
t 925-467-0910
david.bruzzone@nrmk.com
RE License #01103498

Jeff Morgenstern
Senior Managing Director
t 925-467-0905
jeff.morgenstern@nrmk.com
RE License #01275910

NEWMARK

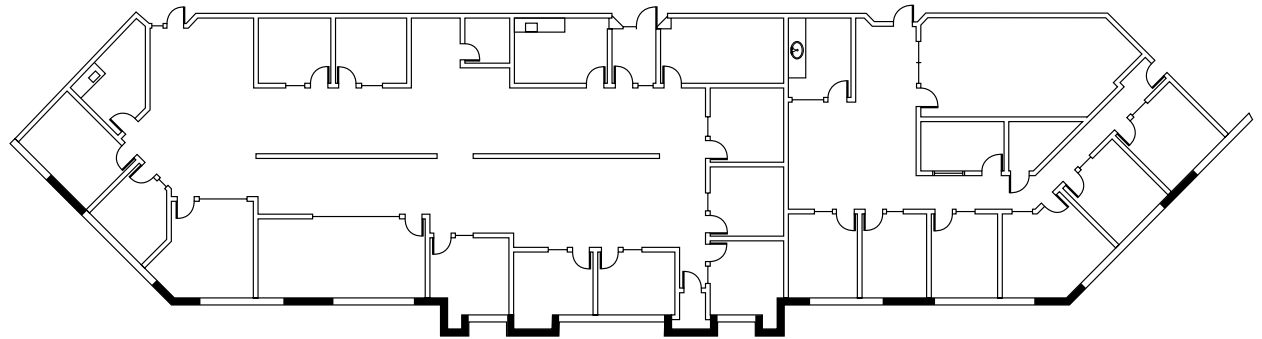
FLOOR PLAN

SUITE 200 | ±8,208 SF



SUITE 200

±8,208 SF



NOT TO SCALE

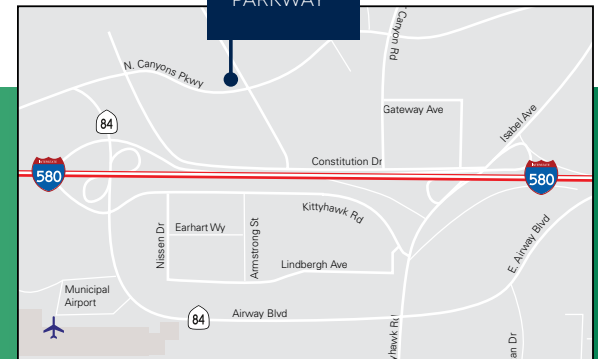


Dave Bruzzone
Managing Director
t 925-467-0910
david.bruzzone@nrmk.com
RE License #01103498

Jeff Morgenstern
Senior Managing Director
t 925-467-0905
jeff.morgenstern@nrmk.com
RE License #01275910

NEWMARK

333
NORTH CANYONS
PARKWAY



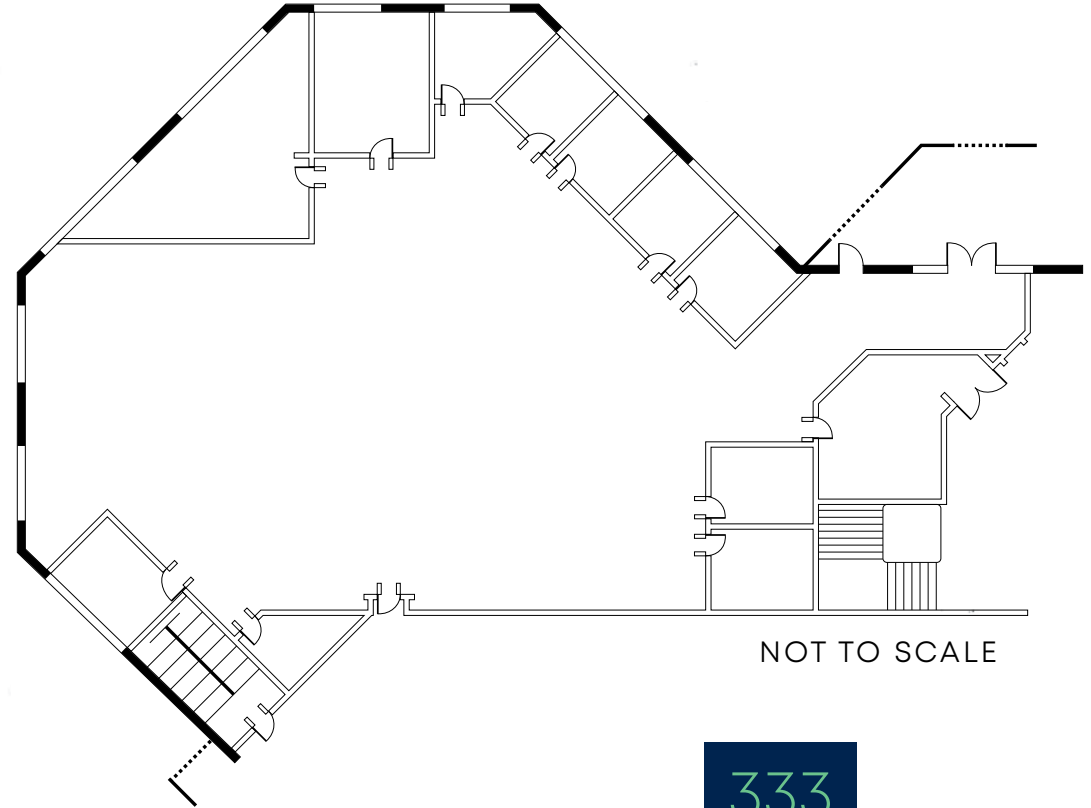
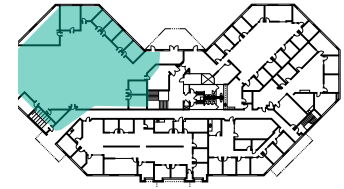
FLOOR PLAN

SUITE 201

±8,341 SF

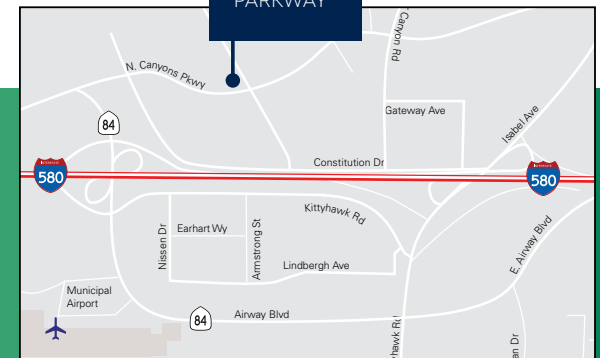


SUITE 201 | ±8,341 SF



NOT TO SCALE

333
NORTH CANYONS
PARKWAY



Dave Bruzzone

Managing Director
t 925-467-0910
david.bruzzone@nrmk.com

RE License #01103498

Jeff Morgenstern

Senior Managing Director
t 925-467-0905
jeff.morgenstern@nrmk.com

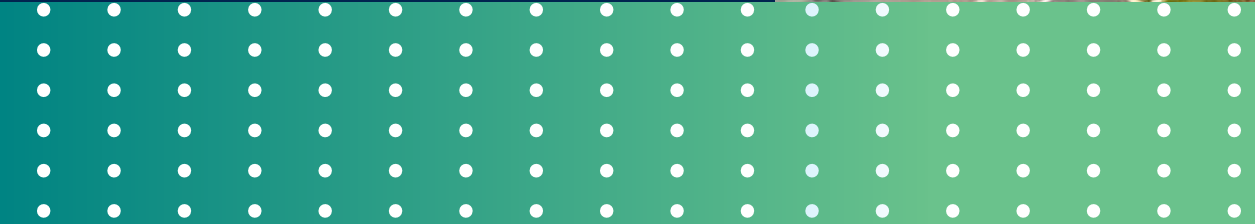
RE License #01275910

NEWMARK

333

NORTH CANYONS PARKWAY

LIVERMORE . CA



Dave Bruzzone

Managing Director
t 925-467-0910
david.bruzzone@nrmk.com

RE License #01103498

Jeff Morgenstern

Senior Managing Director
t 925-467-0905
jeff.morgenstern@nrmk.com

RE License #01275910

NEWMARK

