

# FOR LEASE

Glenn Drive Technology Park

950 Glenn Drive

Folsom, CA 95630



## AVAILABLE:

Suite 210 +/- 4,051 RSF (\$2.15 RSF w/ \$75.00/USF TI Allowance) Shell Space  
Suite 270+ +/- 1,712 RSF (\$2.15 RSF "as is")  
All suites are offered on a Full Service basis.

## PROPERTY HIGHLIGHTS

- Great visibility
- High Quality Building Finishes
- Signage Available
- Abundant Parking
- Building Equipped with Elevator Service
- Onsite Showers in Building Restrooms
- Close Proximity to Shopping
- Walking Distance to Light Rail Station
- Easy Access to HWY 50

## SUMMARY:

950 Glenn Drive, a 65,500 SF Class-A office space, is a part of Glenn Drive Technology Park of Folsom. The property boasts high-end finishes throughout including an opaque glass lobby floor, stone veneer finishes and on-site shower facilities. The location also provides tenants with the latest energy efficiency, high speed data cabling, security and after-hours key access. With the availability of both suites and shell space, this location offers maximum flexibility in designing a space to meet each tenants needs. Located in Folsom, the property is easily accessed from US Highway 50, Prairie City Road and Folsom Boulevard. In addition, it is within walking distance of Sacramento Light Rail service. The property's close proximity to executive housing makes it a natural fit for professional office users and the ease of access and abundant amenities make this location irreplaceable.

## QUIROZ COMMERCIAL, INC

www.quirozcre.com  
BRE# 02113619

## Douglas Quiroz

President  
916-933-2300 Office  
doug@quirozcre.com

## Kaci Dube

Leasing Agent/Property Manager  
916-933-2300 Office  
kaci@quirozcre.com

# PROPERTY PHOTOS



## QUIROZ COMMERCIAL, INC

www.quirozcre.com  
BRE# 02113619

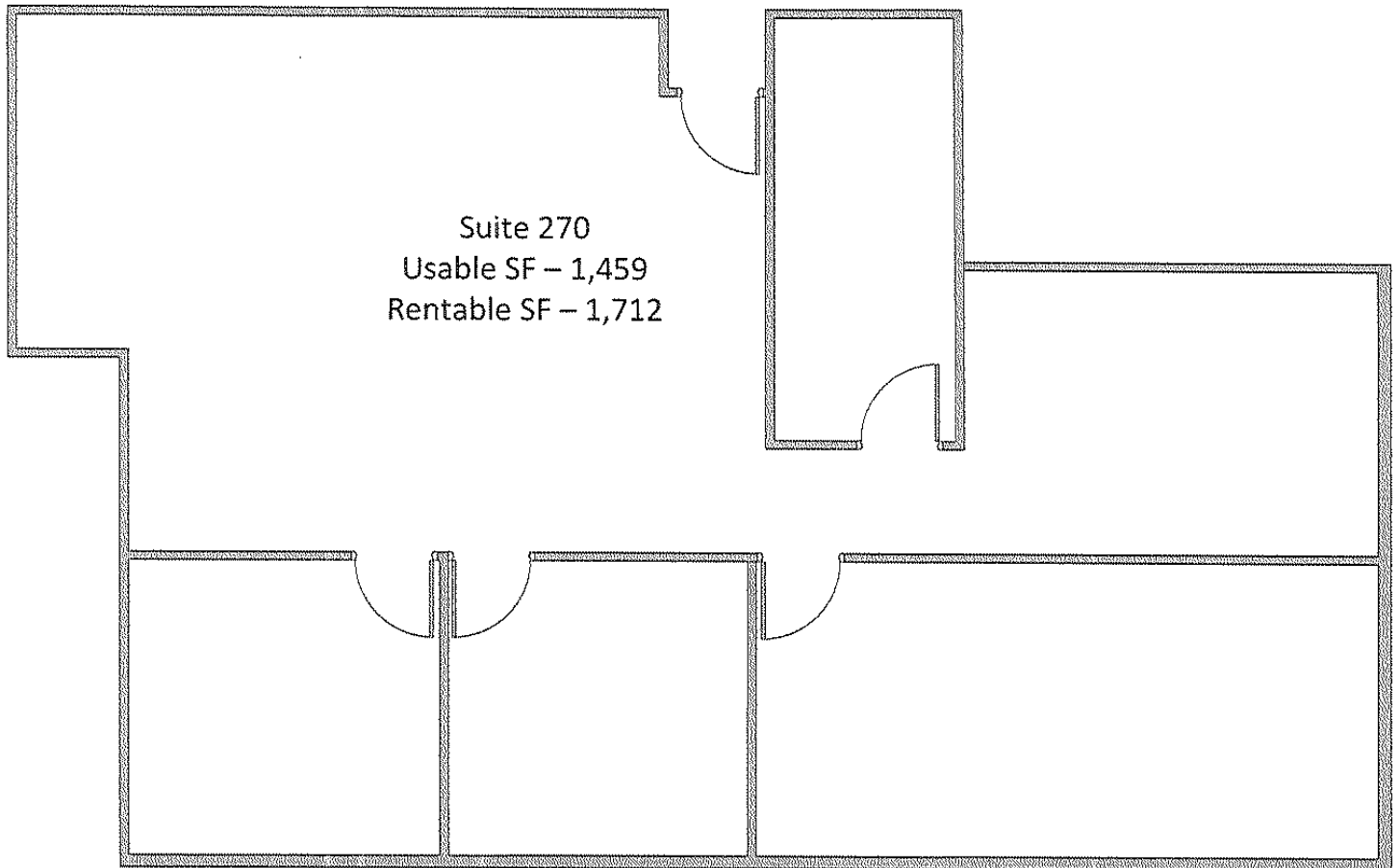
## Douglas Quiroz

President  
916-933-2300 Office  
doug@quirozcre.com

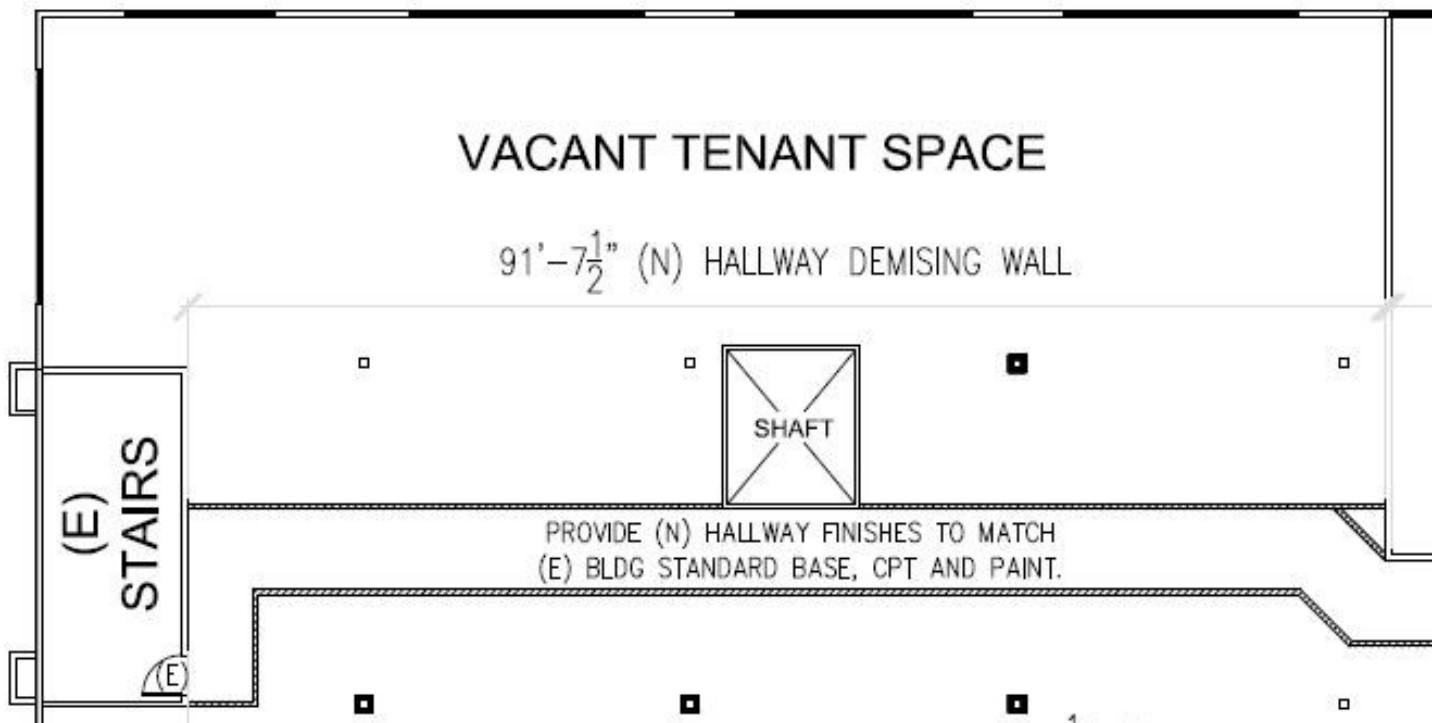
## Kaci Dube

Leasing Agent/Property Manager  
916-933-2300 Office  
kaci@quirozcre.com

# AVAILABLE FLOOR PLANS



# AVAILABLE FLOOR PLANS



Suite 210  
+/- 4,051 RSF

Note: All Dimensions are approximate

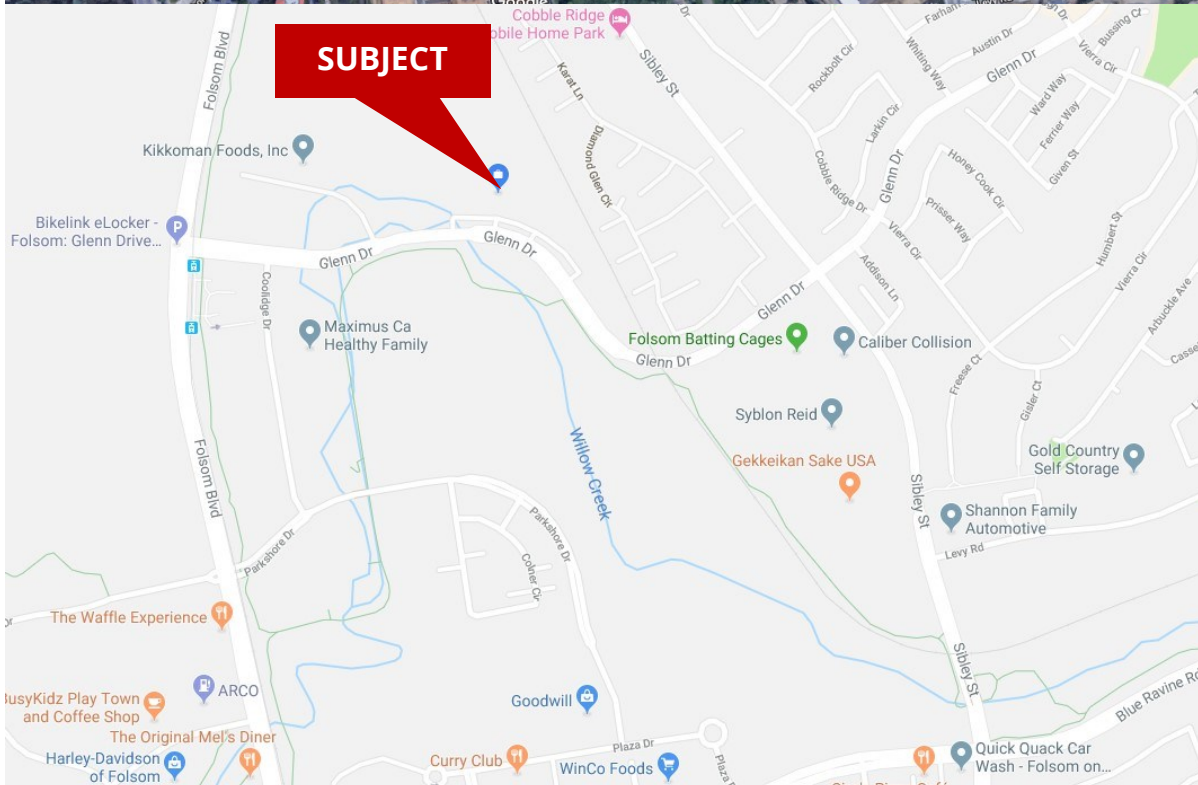
## QUIROZ COMMERCIAL, INC

www.quirozcre.com  
BRE# 02113619

**Douglas Quiroz**  
President  
916-933-2300 Office  
doug@quirozcre.com

**Kaci Dube**  
Leasing Agent/Property Manager  
916-933-2300 Office  
kaci@quirozcre.com

# AERIAL MAP/AREA MAP



**QUIROZ COMMERCIAL, INC**

www.quirzcre.com  
BRE# 02113619

**Douglas Quiroz**

President  
916-933-2300 Office  
doug@quirzcre.com

**Kaci Dube**

Leasing Agent/Property Manager  
916-933-2300 Office  
kaci@quirzcre.com