

FOR SALE | RETAIL\OFFICE | 1,800 SF

9796 S. DIXIE HWY



9796 S. DIXIE HIGHWAY
ERIE, MI 48133

PROPERTY HIGHLIGHTS:

- Former bank branch in Erie
- 1,800 SF on .32 acres at prominent corner location
- 22 parking spaces with drive-thru
- Offered with no deed restrictions
- Property tax: \$4,443
- Sale price: \$250,000

The information provided herein along with any attachment(s) was obtained from sources believed to be reliable, however, Friedman Real Estate makes no guarantees, warranties, or representations as to the completeness or accuracy of such information and legal counsel is advised. All information provided is subject to verification and no liability for reliance on such information or errors or omissions is assumed. The presentation of this property is submitted subject to errors, omissions, change of price or conditions, prior sale or lease, or withdrawal without notice. Copyright © 2023 Friedman Real Estate. All rights reserved.

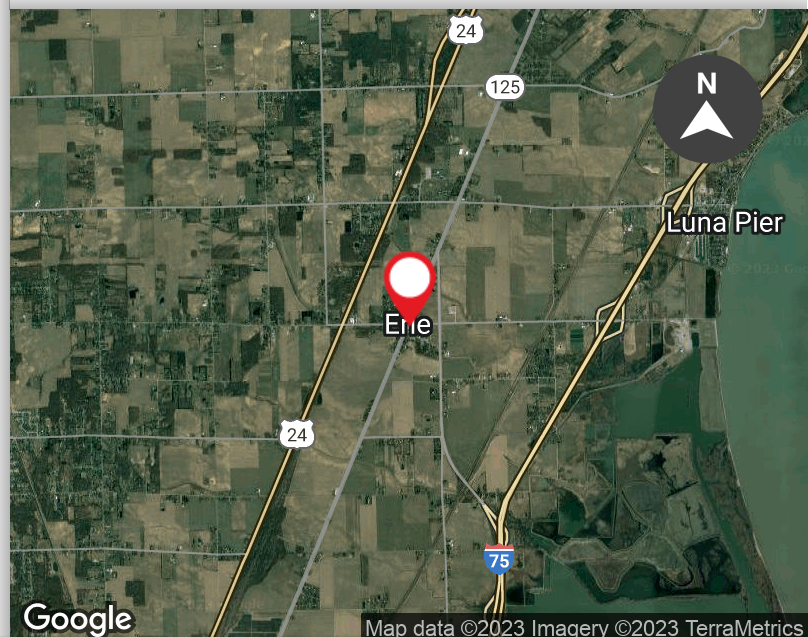
FOR MORE INFORMATION **PLEASE CONTACT:**



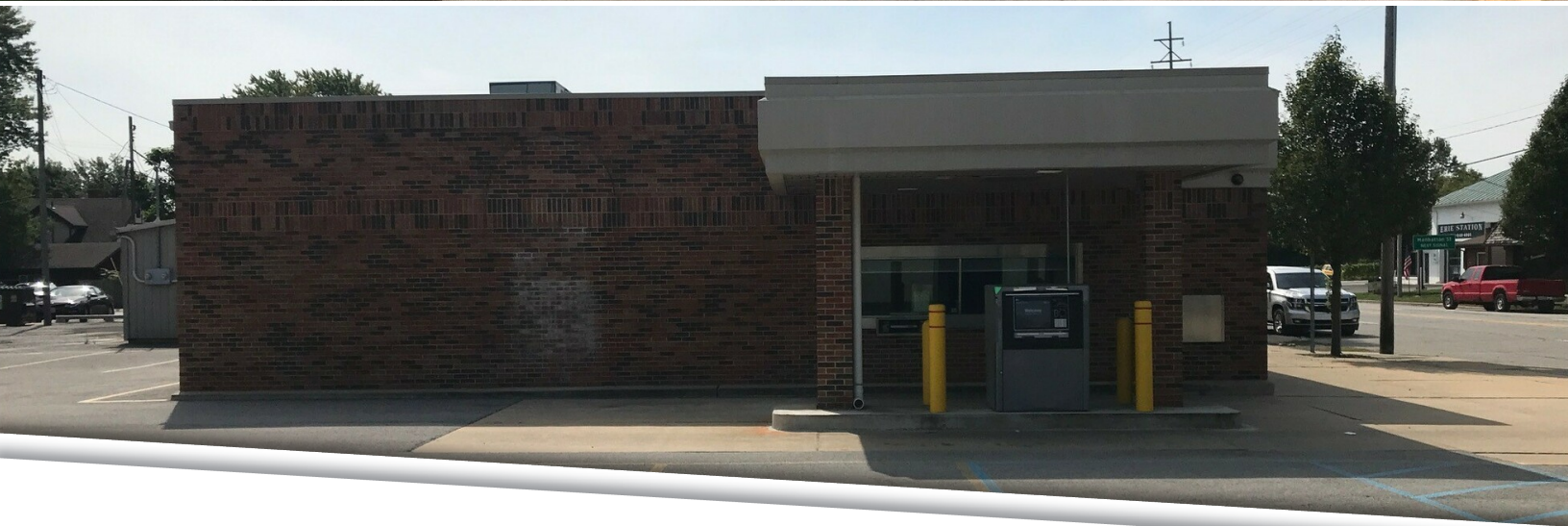
GREG HORNBY
greg.hornby@freg.com

248.324.2000

eCODE 357



9796 S. DIXIE HWY - FORMER BANK BRANCH
PROPERTY PHOTOS



FOR MORE INFORMATION **PLEASE CONTACT:**



GREG HORNBY
greg.hornby@freg.com