

For Lease

Carson City Office Space



1000-1150 E. William St.
Carson City, NV 89701

Michael Keating, SIOR
Partner
775.386.9727
mkeating@logicCRE.com
S.0174942

Michael Dorn
Senior Associate
775.453.4436
mdorn@logicCRE.com
S.0189635

Listing Snapshot



Negotiable
Lease Rate



± 635 - 10,494 SF
Available Square Footage



002-123-07
Parcel Number (APN)

Property Highlights

- Turn-key office space centrally located
- Well established office park with a variety of state tenants
- Ample parking
- Situated along E. William St. with ± 25,500 CPD
- Close proximity to the State Capitol Building
- Full service lease excluding suite janitorial and internet
- Variety of restaurant and retail options nearby

Demographics

	1-mile	3-mile	5-mile
2024 Population	13,796	53,439	59,328
2024 Average Household Income	\$73,605	\$84,725	\$86,982
2024 Total Households	6,159	22,409	24,186

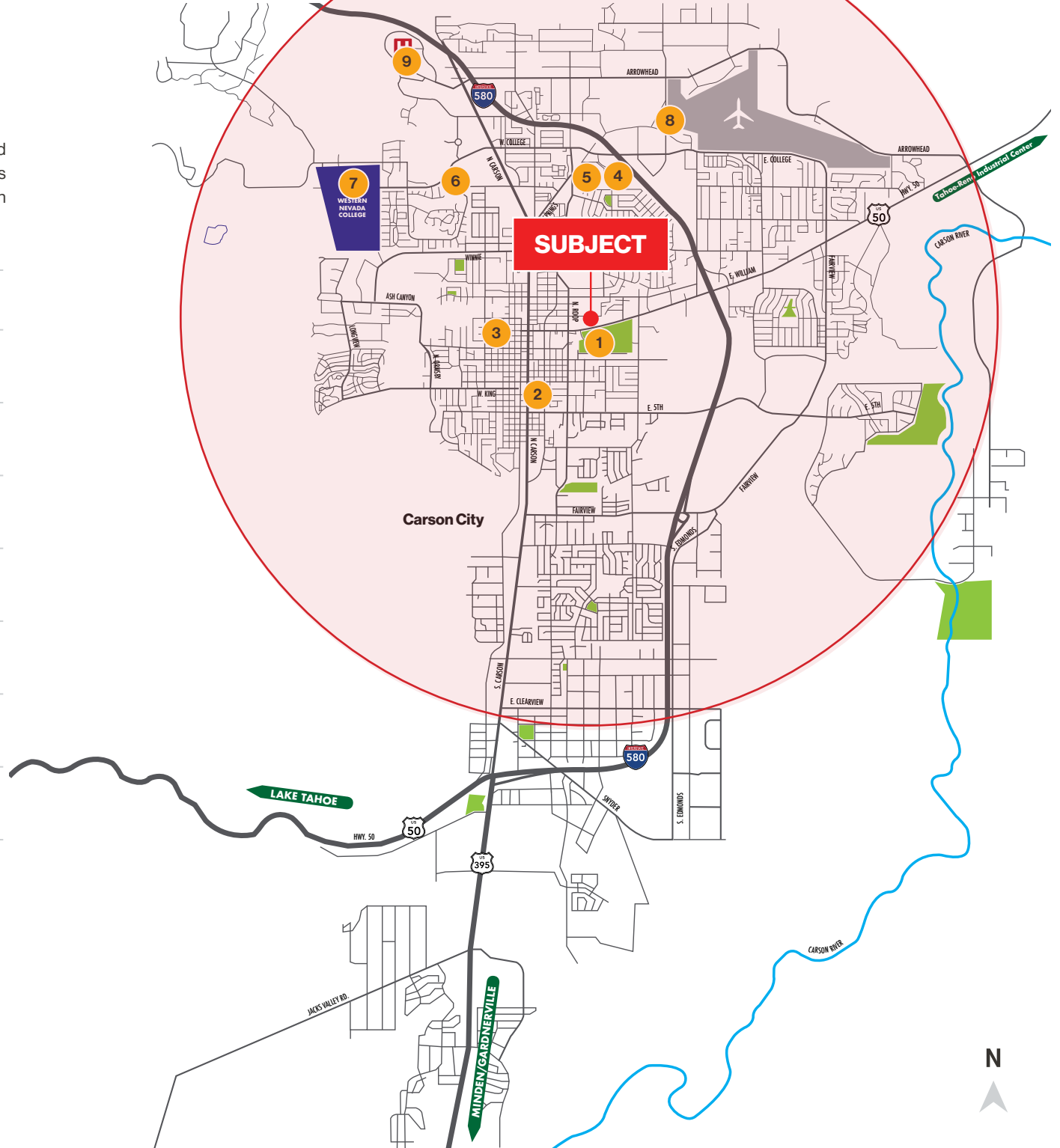


Vicinity Map

The campus is strategically located in a dense and mature residential area servicing ± 59,328 residents with an average household income of \$86,982 within a 5-mile radius.

Amenities within a 3-mile radius

- 1
Mills Park
 - 0.02 miles
- 2
Nevada State Capitol
 - 0.73 miles
- 3
Mountain Medical Pulmonary Center
 - 0.80 miles
- 4
The Home Depot
 - 1.00 mile
- 5
Walmart Supercenter
 - 1.1 miles
- 6
Silver Oak Golf Club
 - 1.78 miles
- 7
Western Nevada College
 - 1.99 miles
- 8
Carson City Airport
 - 1.73 miles
- 9
Carson Tahoe Regional Medical Center
 - 2.52 miles







 Parks
Mills Park

 Retail
Smith's
FOOD & DRUG STORES


 Retail
Bank of America

SUBJECT
± 635 - 10,494 SF

 Retail
United
FEDERAL CREDIT UNION

 Retail


 Retail
U-HAUL

 Retail
WELLS FARGO

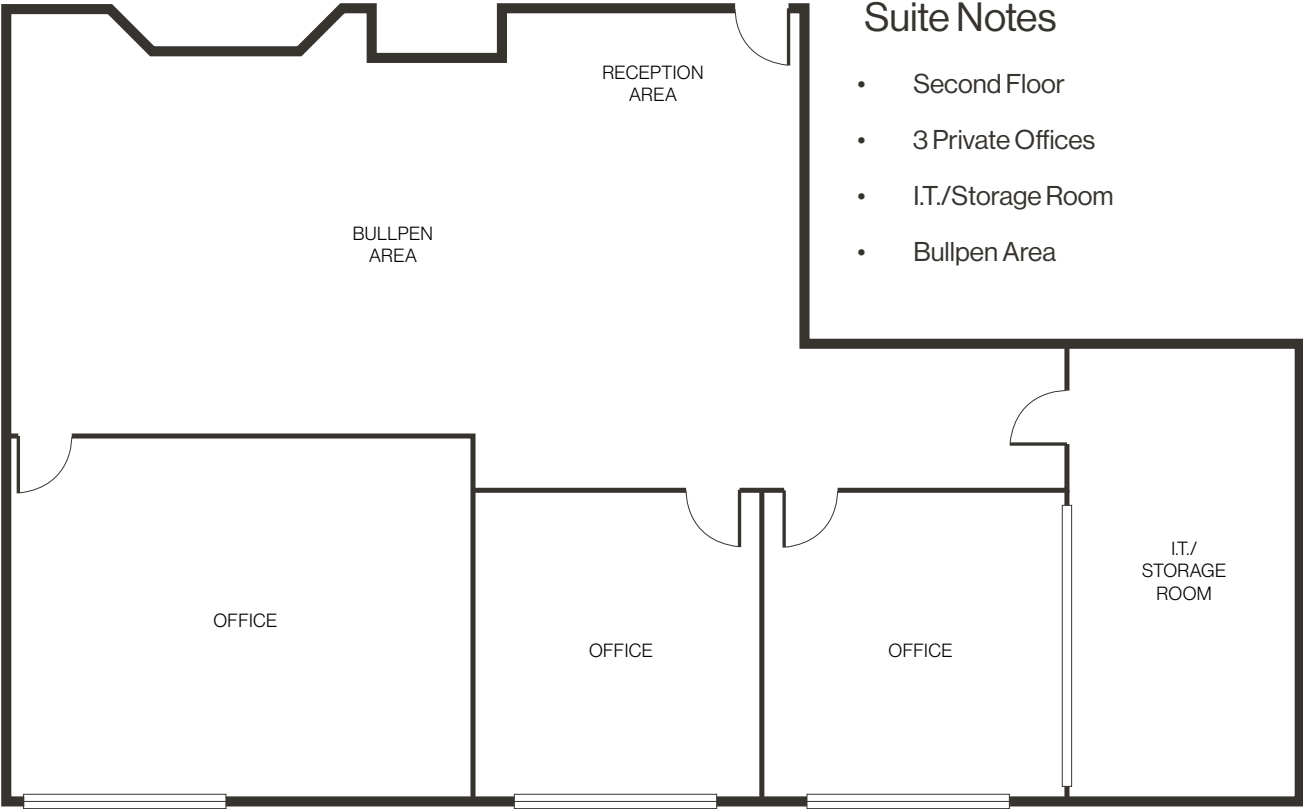
 Retail
Walgreens

E. William St. // 25,500 CPD

State St.

N. Saliman Rd.

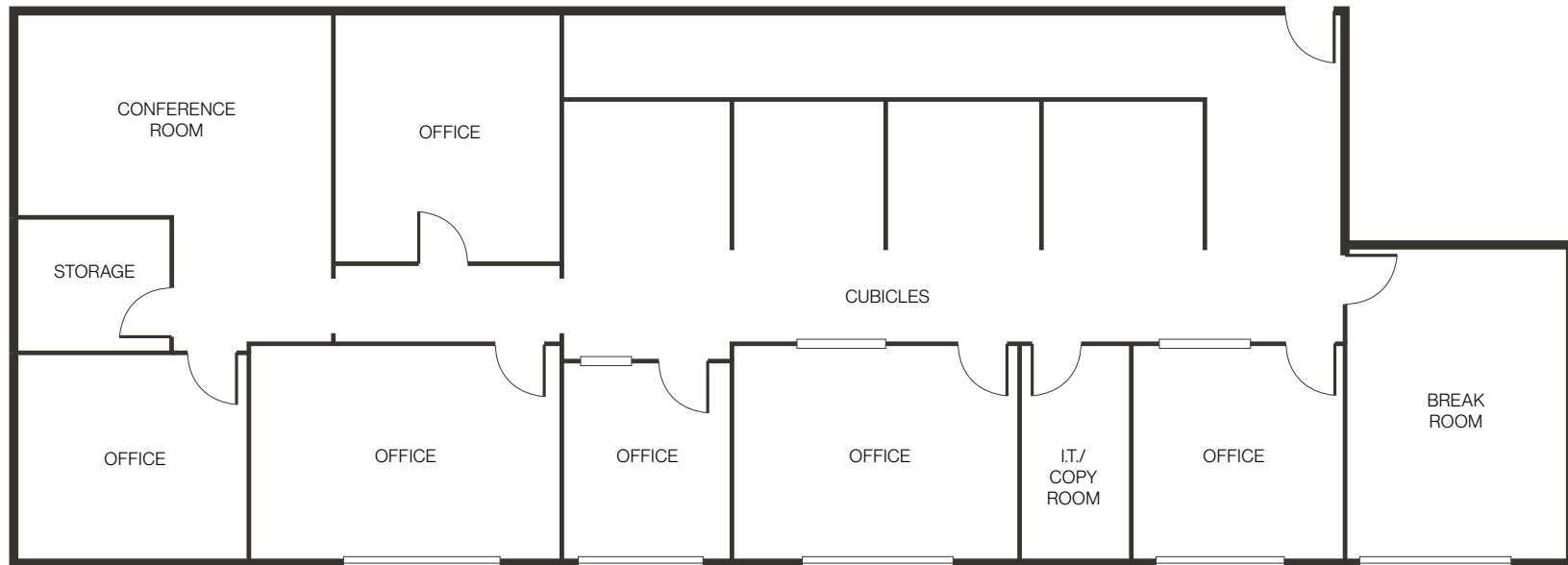




Suite Notes

- Second Floor
- 3 Private Offices
- I.T./Storage Room
- Bullpen Area

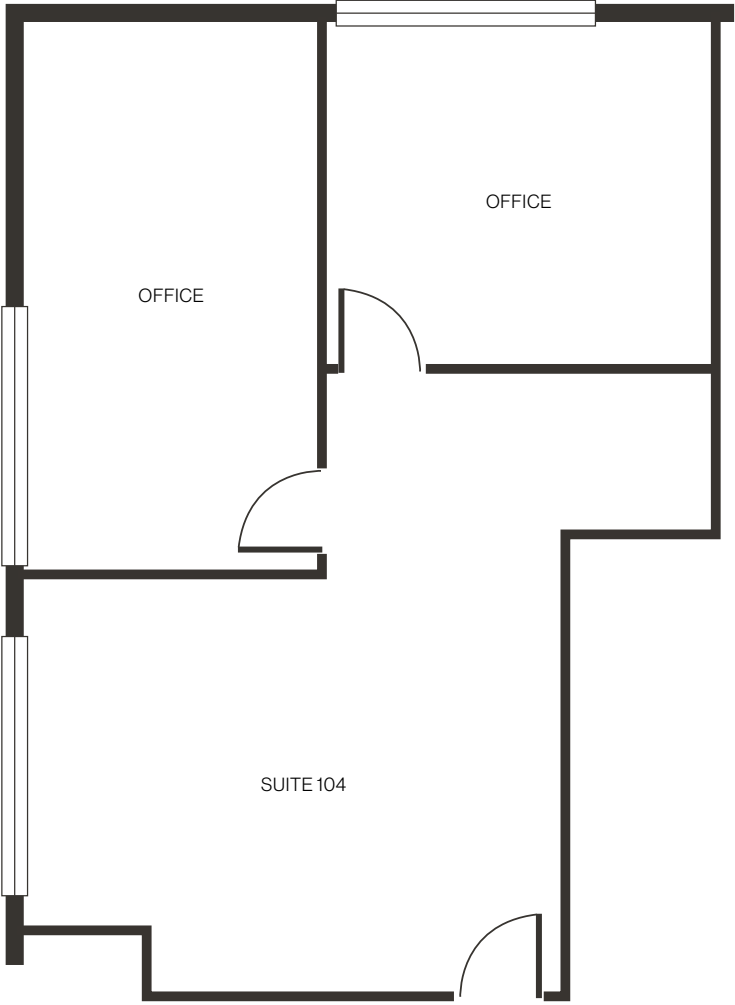
[Click for a Virtual Tour](#) 



Suite Notes

- 6 Private Offices
- Conference/Meeting Room
- Break Room
- Storage Room
- 4 Cubicles/Workstations
- I.T./Copy Room

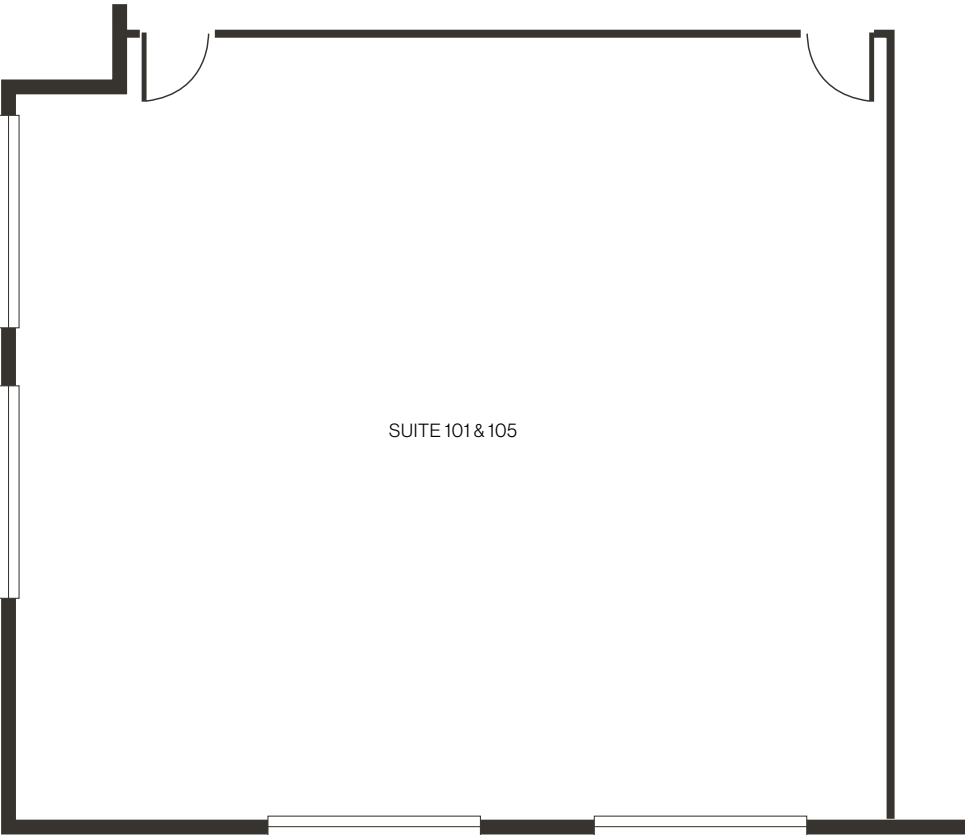
[Click for a Virtual Tour](#) 



Suite Notes

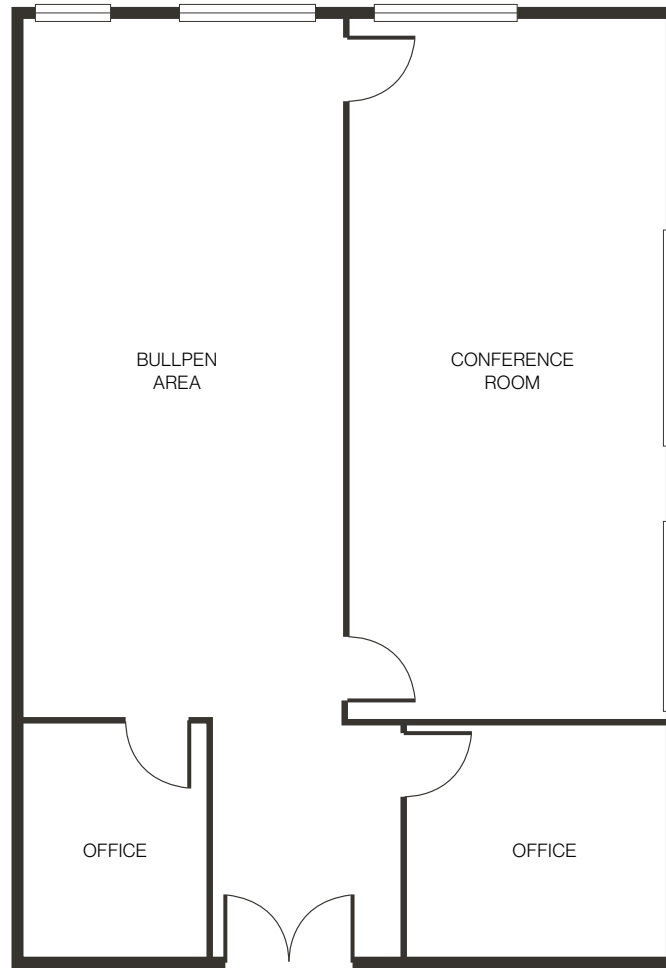
- First Floor Corner Suite
- 2 Private Offices
- Bullpen Area

[Click for a Virtual Tour](#) 



Suite Notes

- First Floor Corner Suite
- Open Floor Plan



Suite Notes

- 2 Private Offices
- Large Conference/Meeting Room
- Bullpen Area

[Click for a Virtual Tour](#) 

Suite 350 | Building 1050 | ± 10,494 SF



Suite Notes

- 8 Private Offices
- Multiple Open Working Areas
- Conference Room
- Chem. Lab

**Demising options available - contact broker*

Property Photos



LOGIC Commercial Real Estate

Specializing in Brokerage and Receivership Services



LOGIC



Join our email list and
connect with us on LinkedIn

The information herein was obtained from sources deemed reliable; however LOGIC Commercial Real Estate makes no guarantees, warranties or representation as to the completeness or accuracy thereof.

For inquiries please reach out to our team.

Michael Keating, SIOR

Partner
775.386.9727
mkeating@logicCRE.com
S.0174942

Michael Dorn

Senior Associate
775.453.4436
mdorn@logicCRE.com
S.0189635