



FOR LEASE

Class A Office Space

**Evans
Elder
Brown &
Seubert**

COMMERCIAL REAL ESTATE

CONTACT

Stephanie Seubert

stephanie@eebcre.com

(541) 345-4860

Licensed in the State of Oregon.

DETAILS

- High quality, Class A office space with beautiful finishes
- On-site parking (surface lot & secure underground lot) available at market rates
- Conveniently located in the heart of Downtown Eugene
- \$1.95 per sq. ft. per month, Fully Serviced, less janitorial

10th & Mill Building
360 East 10th Avenue
Eugene, Oregon 97401

Suite 101

10th & Mill Building
360 East 10th Avenue, Eugene OR 97401

Evans
Elder
Brown &
Seubert

COMMERCIAL REAL ESTATE

CONTACT

**Stephanie
Seubert**

stephanie@eebcre.com

(541) 345-4860

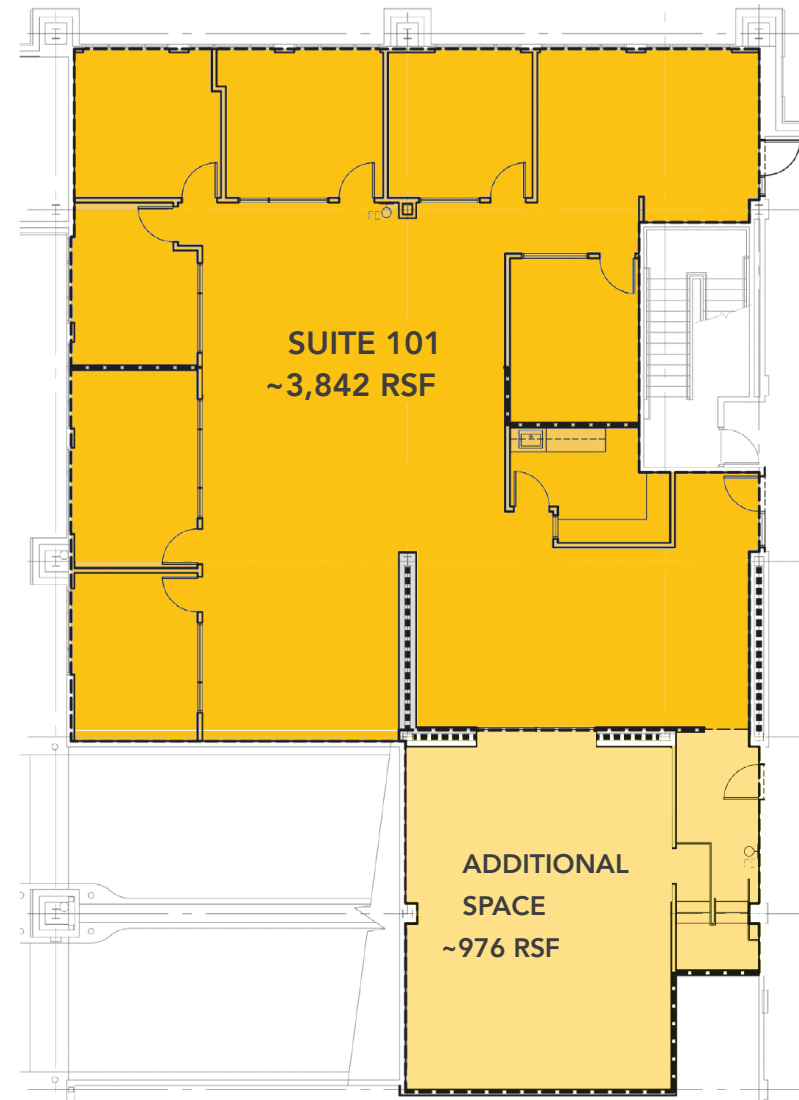
101 East Broadway
Suite #101
Eugene, OR 97401

Licensed in the
State of Oregon.

Suite 101

APPROXIMATELY 3,842 RSF

- An additional 976 rsf can be added for additional storage/ office area
- 7 Private offices with large windows
- Reception Area
- Open Work Area
- Kitchenette Area
- Storage Area
- \$1.95 per RSF per month, Fully Serviced, less janitorial



Suite 104

10th & Mill Building
360 East 10th Avenue, Eugene OR 97401

Evans
Elder
Brown &
Seubert

COMMERCIAL REAL ESTATE

CONTACT

**Stephanie
Seubert**

stephanie@eebcre.com

(541) 345-4860

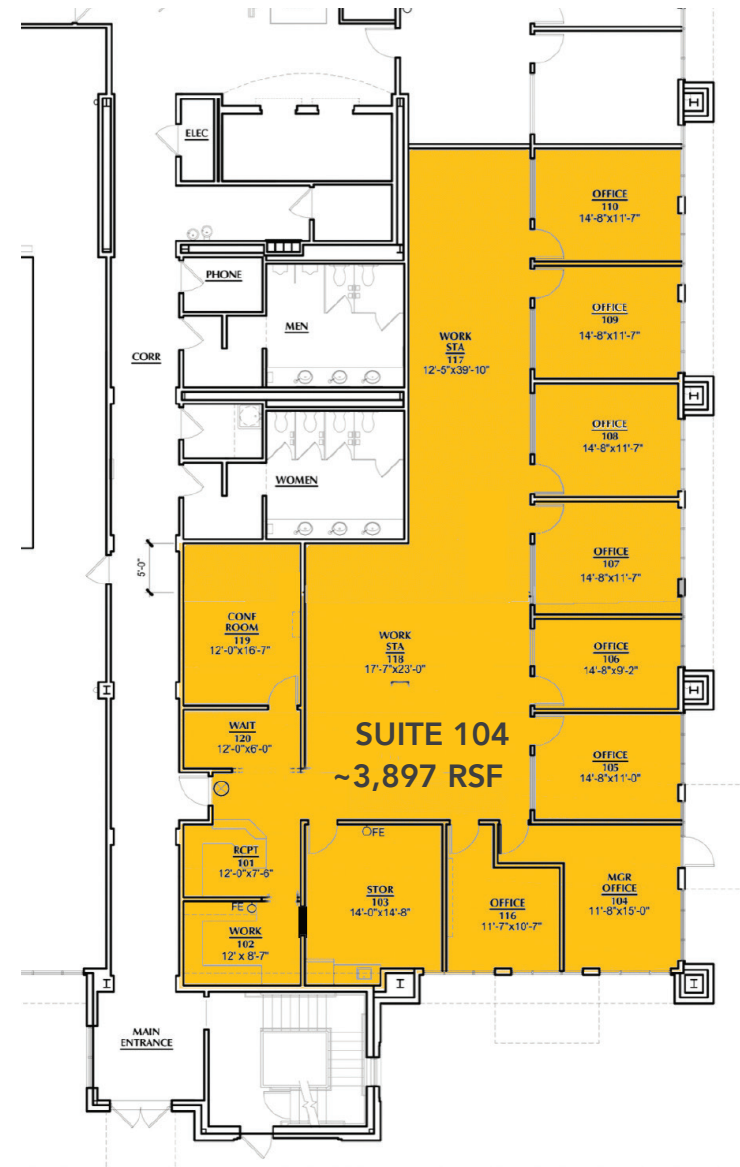
101 East Broadway
Suite #101
Eugene, OR 97401

Licensed in the
State of Oregon.

Suite 104

APPROXIMATELY 3,897 RSF

- 8 Private offices with large windows
- Reception Area
- Open Work Area
- Kitchenette Area
- Conference Room
- \$1.95 per RSF per month,
Fully Serviced, less janitorial



Suite 105

10th & Mill Building
360 East 10th Avenue, Eugene OR 97401

Evans
Elder
Brown &
Seubert

COMMERCIAL REAL ESTATE

CONTACT

**Stephanie
Seubert**

stephanie@eebcre.com

(541) 345-4860

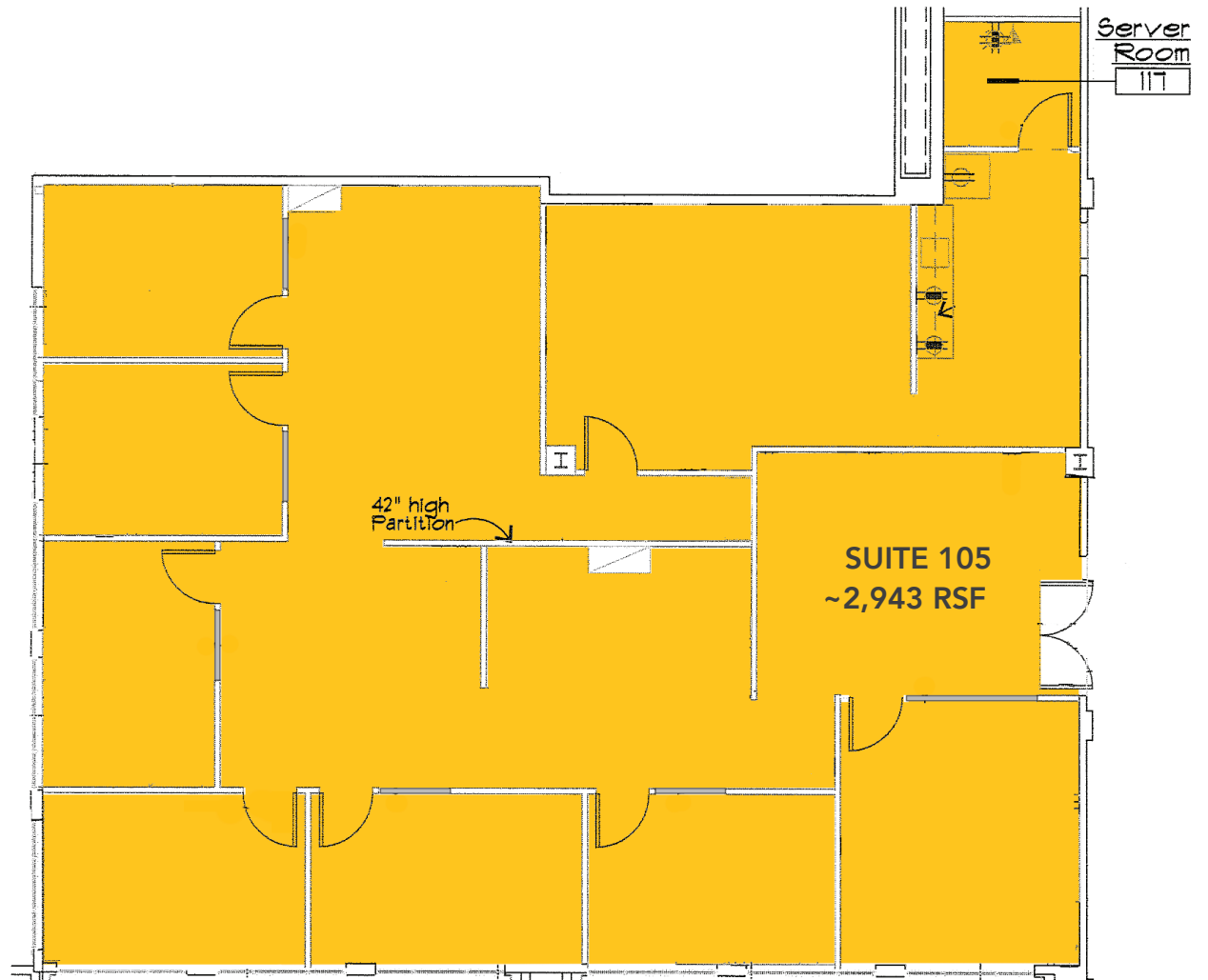
101 East Broadway
Suite #101
Eugene, OR 97401

Licensed in the
State of Oregon.

Suite 105

**APPROXIMATELY
2,943 RSF**

- 7 Private offices with large windows
- Reception Area
- Open Work Area
- Kitchenette
- Server Room
- \$1.95/RSF/Month Fully Serviced, less janitorial



Suite 202

10th & Mill Building
360 East 10th Avenue, Eugene OR 97401

Evans
Elder
Brown &
Seubert

COMMERCIAL REAL ESTATE

CONTACT

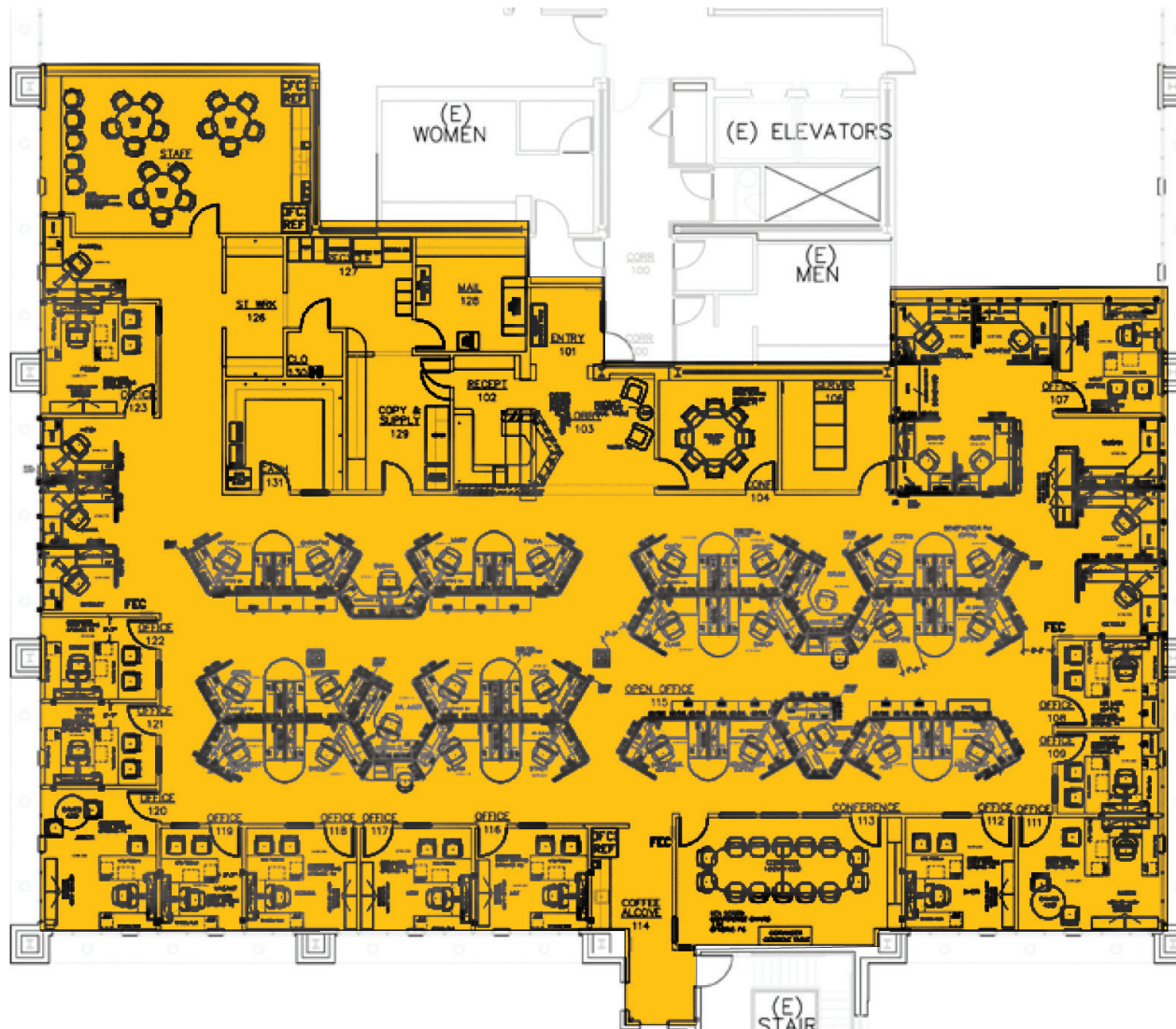
Stephanie
Seubert

stephanie@eebcre.com

(541) 345-4860

101 East Broadway
Suite #101
Eugene, OR 97401

Licensed in the
State of Oregon.



Suite 202

**APPROXIMATELY
9,637 RSF**

- Reception/Copy Area
- Mail Room
- Server Room
- Open Work Areas
- Private Perimeter Offices & Conference Rooms
- Large break room
- Many offices have windows which provide abundant natural light
- \$1.95/RSF/Month Fully Serviced, less janitorial

3rd Floor | Suite D

10th & Mill Building
360 East 10th Avenue, Eugene OR 97401

Evans
Elder
Brown &
Seubert

COMMERCIAL REAL ESTATE

CONTACT

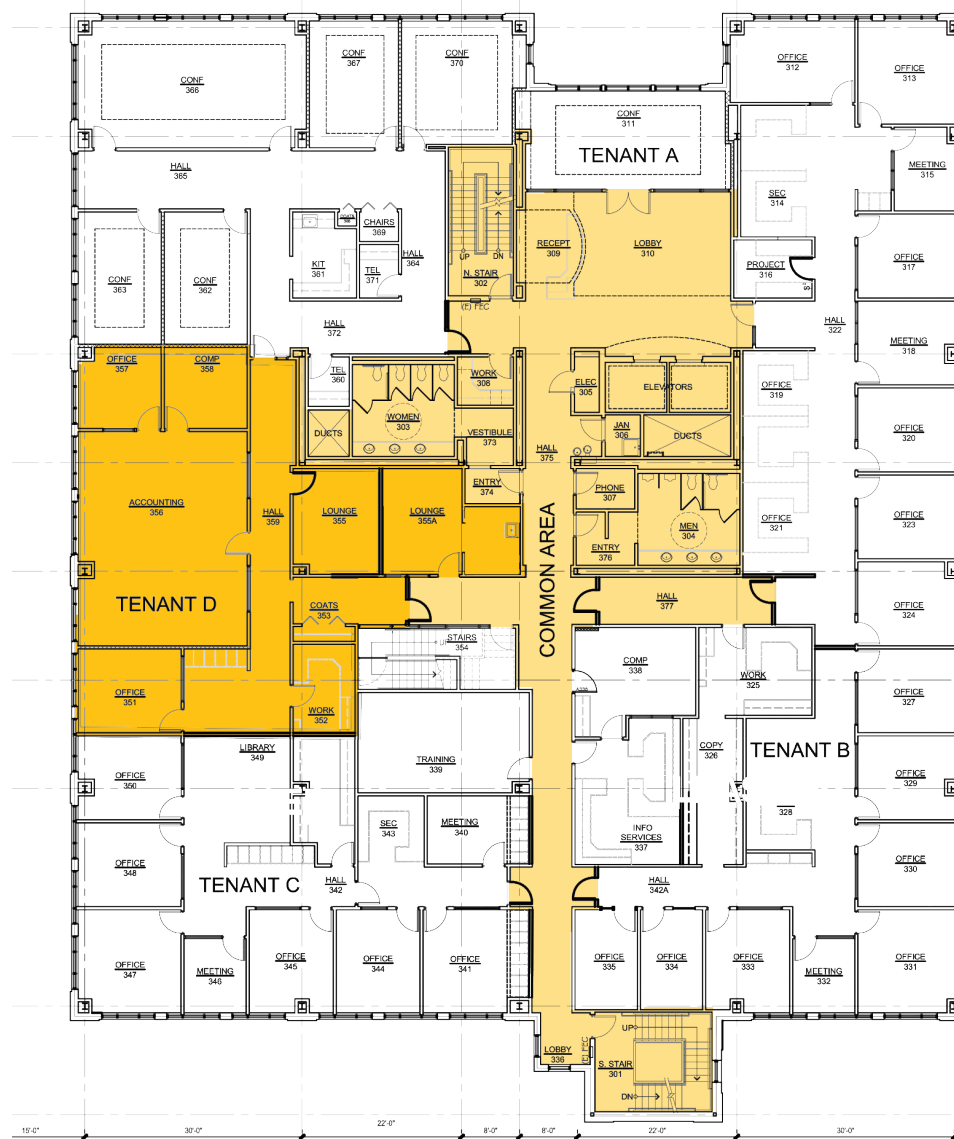
**Stephanie
Seubert**

stephanie@eebcre.com

(541) 345-4860

101 East Broadway
Suite #101
Eugene, OR 97401

Licensed in the
State of Oregon.



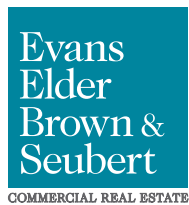
3rd Floor | Suite D

APPROXIMATELY 2,333 RSF

- Space to be reconfigured to suit tenant's needs
- Access to common area restrooms
- \$1.95 per RSF per month, Fully Serviced, less janitorial

Location

10th & Mill Building
360 East 10th Avenue, Eugene OR 97401



CONTACT

Stephanie Seubert

stephanie@eebcre.com

(541) 345-4860